

Revision D:

• MUZ-LN25/35VGHZ2- **E2** and MUZ-LN50VGHZ- **E2** have been added.

OBB768 REVISED EDITION-C is void.

OUTDOOR UNIT PARTS CATALOG



**No. OBB768
REVISED EDITION-D**

Models

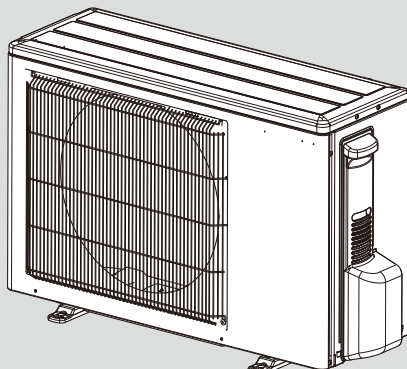
MUZ-LN25VGHZ - **E1**, **ER1**, **ET1**

MUZ-LN35VGHZ - **E1**, **ER1**, **ET1**

MUZ-LN50VGHZ - **E1**, **ER1**, **ET1**, **E2**

MUZ-LN25VGHZ2 - **E1**, **ER1**, **E2**

MUZ-LN35VGHZ2 - **E1**, **ER1**, **E2**



**MUZ-LN25VGHZ
MUZ-LN35VGHZ**

CONTENTS

1. SERVICE PARTS LIST 2

SERVICE MANUAL (OBH768)

Revision A:

- Part number for INVERTER P.C. BOARD has been changed.

Revision B:

- MUZ-LN25VGHZ2-**E1** and MUZ-LN35VGHZ2-**E1** have been added.
- Some descriptions have been modified.

Revision C:

- MUZ-LN25/35VGHZ2-**ER1** have been added.

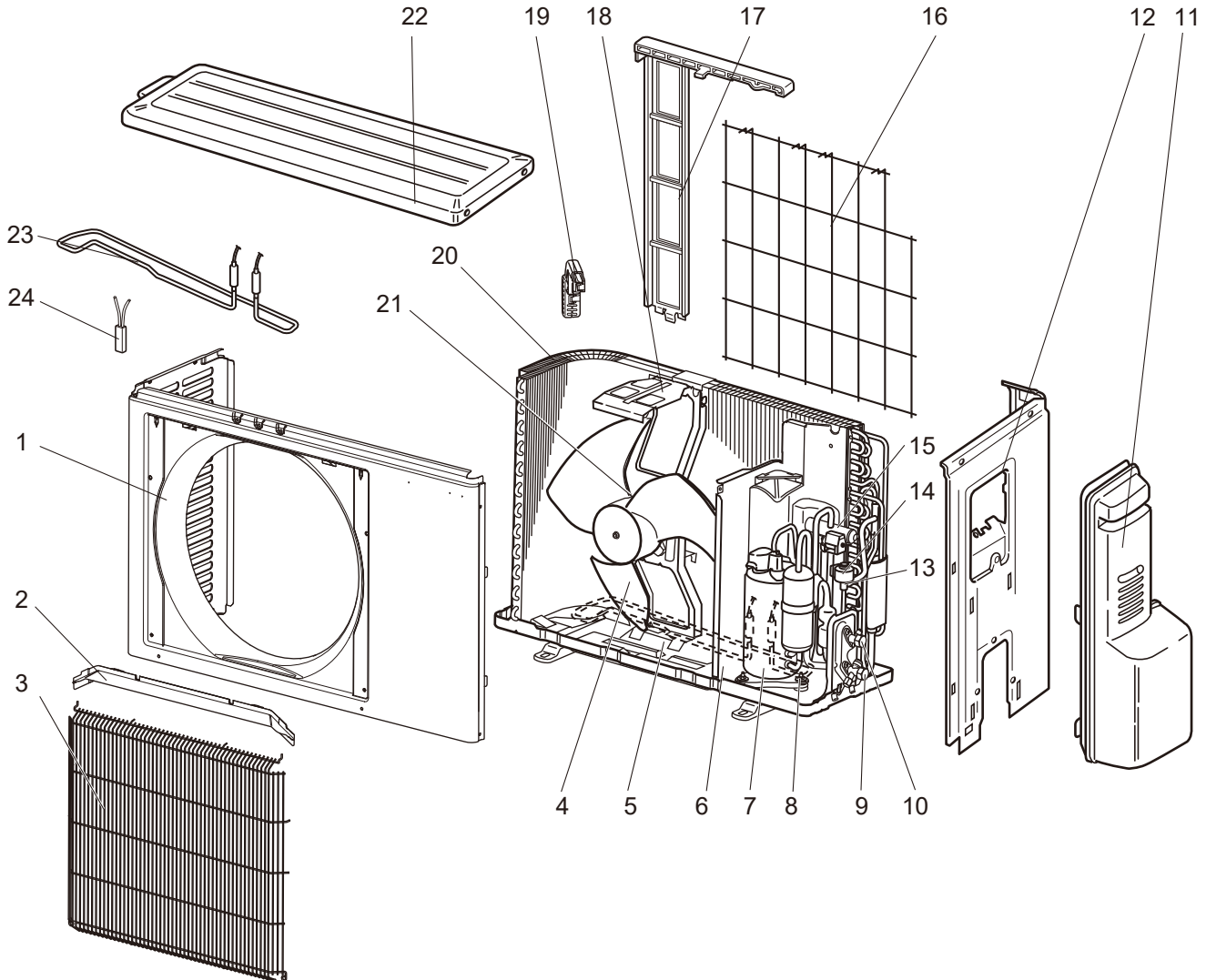
Revision D:

- MUZ-LN25/35VGHZ2-**E2** and MUZ-LN50VGHZ-**E2** have been added.

1 SERVICE PARTS LIST

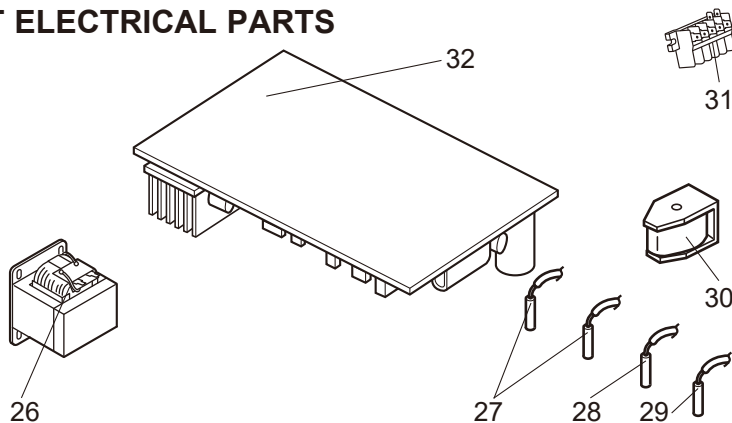
MUZ-LN25VGHZ

1-1. OUTDOOR UNIT STRUCTURAL PARTS AND FUNCTIONAL PARTS



MUZ-LN25VGHZ

1-2. OUTDOOR UNIT ELECTRICAL PARTS



1-1. OUTDOOR UNIT STRUCTURAL PARTS AND FUNCTIONAL PARTS

1. The part quantity below indicates the required number of pieces per unit.
2. The circled No. indicates that the part is not shown in the figure.

No.	Part No.	Part Name	MUZ-LN25VGHZ- ^[ET]	MUZ-LN25VGHZ- ^[ERT]	Symbol in Wiring Diagram	Remarks
1	E22 J63 232	CABINET	1	1		
2	E22 J63 531	ICE GUARD	1	1		
3	E22 Y84 521	GRILLE	1	1		
4	E22 927 501	PROPELLER FAN	1	1		
5	E22 Y96 290	BASE	1	1		
6	E22 G14 293	SEPARATOR	1	1		
7	E22 Y85 900	COMPRESSOR	1	1	MC	SVB092FBAMT
8	E22 C34 506	COMPRESSOR RUBBER SET	3	3		3 RUBBERS/SET
9	E22 T66 661	STOP VALVE (GAS)	1	1		ø9.52
10	E22 T66 662	STOP VALVE (LIQUID)	1	1		ø6.35
11	E22 L59 245	SERVICE PANEL	1	1		
12	E22 G15 233	BACK PANEL	1	1		
13	E22 Y84 640	EXPANSION VALVE	1	1		
14	E22 Y84 493	EXPANSION VALVE COIL	1	1	LEV	
15	E22 R81 961	4-WAY VALVE	1	1		
16	E22 930 525	CONDENSER WIRE NET	1	1		
17	E22 930 523	CONDENSER NET	1	1		
18	E22 929 515	MOTOR SUPPORT	1	1		
19	E22 D84 079	THERMO HOLDER	1	1		
20	E22 Y84 630	OUTDOOR HEAT EXCHANGER	1	1		
21	E22 Y84 301	OUTDOOR FAN MOTOR	1	1	MF	RC0J50-□□
22	E22 L85 297	TOP PANEL	1	1		
23	E22 Y96 526	DEFROST HEATER	1	1	H	Includes lead assembly
24	E22 D65 381	HEATER PROTECTOR	1	1	26H	
②5	E22 P72 936	CAPILLARY TUBE	1	1		ø4.0×ø2.4×240

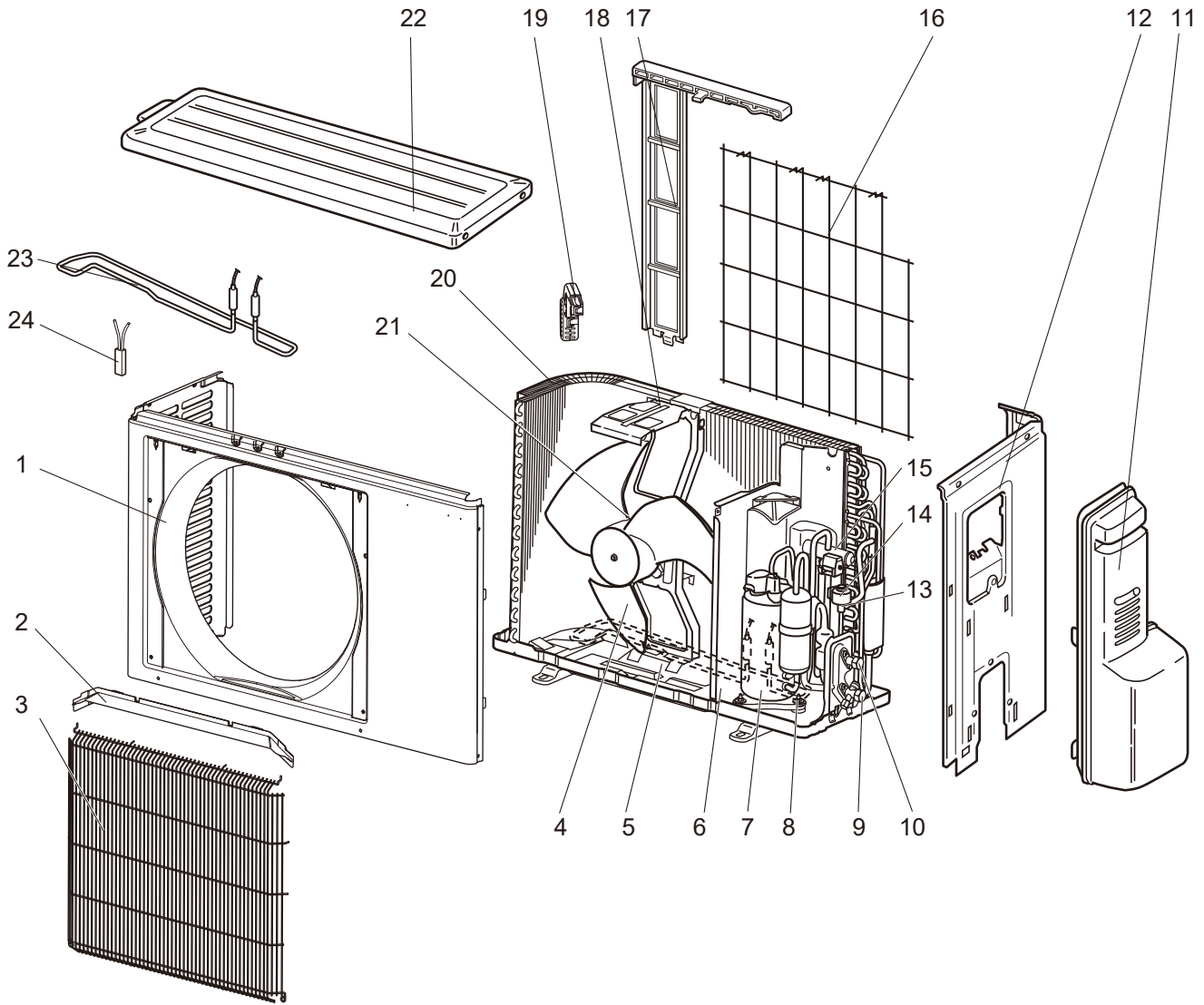
1-2. OUTDOOR UNIT ELECTRICAL PARTS

1. The part quantity below indicates the required number of pieces per unit.

No.	Part No.	Part Name	MUZ-LN25VGHZ- ^[ET]	MUZ-LN25VGHZ- ^[ERT]	Symbol in Wiring Diagram	Remarks
26	E22 G11 337	REACTOR	1	1	L61	
27	E22 R81 306	THERMISTOR SET	1	1	RT61, RT62	DEFROST, DISCHARGE
28	E22 D65 308	AMBIENT TEMPERATURE THERMISTOR	1	1	RT65	
29	E22 P72 307	OUTDOOR HEAT EXCHANGER TEMPERATURE THERMISTOR	1	1	RT68	
30	E22 R81 490	R.V. COIL	1	1	21S4	
31	E22 T95 374	TERMINAL BLOCK	1	1	TB1	5P
32	E22 62E 451	INVERTER P.C. BOARD	1	1		Includes heat sink and RT64

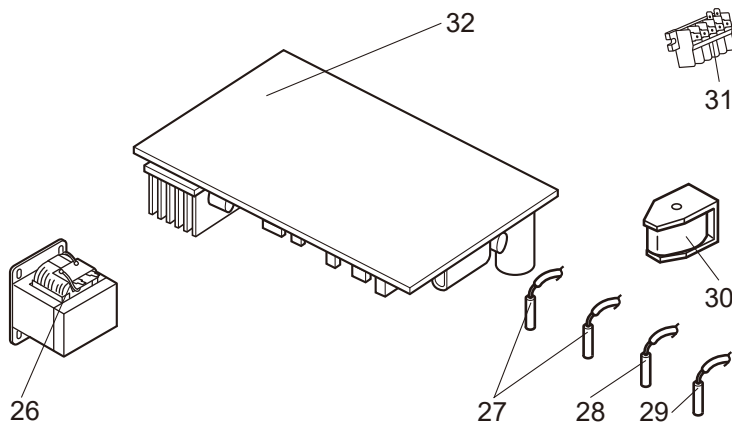
MUZ-LN25VGHZ

1-3. OUTDOOR UNIT STRUCTURAL PARTS AND FUNCTIONAL PARTS



MUZ-LN25VGHZ

1-4. OUTDOOR UNIT ELECTRICAL PARTS



1-3. OUTDOOR UNIT STRUCTURAL PARTS AND FUNCTIONAL PARTS

1. The part quantity below indicates the required number of pieces per unit.
2. The circled No. indicates that the part is not shown in the figure.

No.	Part No.	Part Name	MUZ-LN25VGHZ- ^{ETI}	Symbol in Wiring Diagram	Remarks
1	E22 J63 232	CABINET	1		
2	E22 J63 531	ICE GUARD	1		
3	E22 Y84 521	GRILLE	1		
4	E22 927 501	PROPELLER FAN	1		
5	E22 Y96 290	BASE	1		
6	E22 G14 293	SEPARATOR	1		
7	E22 Y85 900	COMPRESSOR	1	MC	SVB092FBAMT
8	E22 C34 506	COMPRESSOR RUBBER SET	3		3 RUBBERS/SET
9	E22 T66 661	STOP VALVE (GAS)	1		ø9.52
10	E22 T66 662	STOP VALVE (LIQUID)	1		ø6.35
11	E22 L59 245	SERVICE PANEL	1		
12	E22 G15 233	BACK PANEL	1		
13	E22 Y84 640	EXPANSION VALVE	1		
14	E22 Y84 493	EXPANSION VALVE COIL	1	LEV	
15	E22 R81 961	4-WAY VALVE	1		
16	E22 930 525	CONDENSER WIRE NET	1		
17	E22 930 523	CONDENSER NET	1		
18	E22 929 515	MOTOR SUPPORT	1		
19	E22 D84 079	THERMO HOLDER	1		
20	E22 Y84 630	OUTDOOR HEAT EXCHANGER	1		
21	E22 Y84 301	OUTDOOR FAN MOTOR	1	MF	RC0J50-□□
22	E22 L85 297	TOP PANEL	1		
23	E22 Y96 526	DEFROST HEATER	1	H	Includes lead assembly
24	E22 D65 381	HEATER PROTECTOR	1	26H	
25	E22 P72 936	CAPILLARY TUBE	1		ø4.0×ø2.4×240

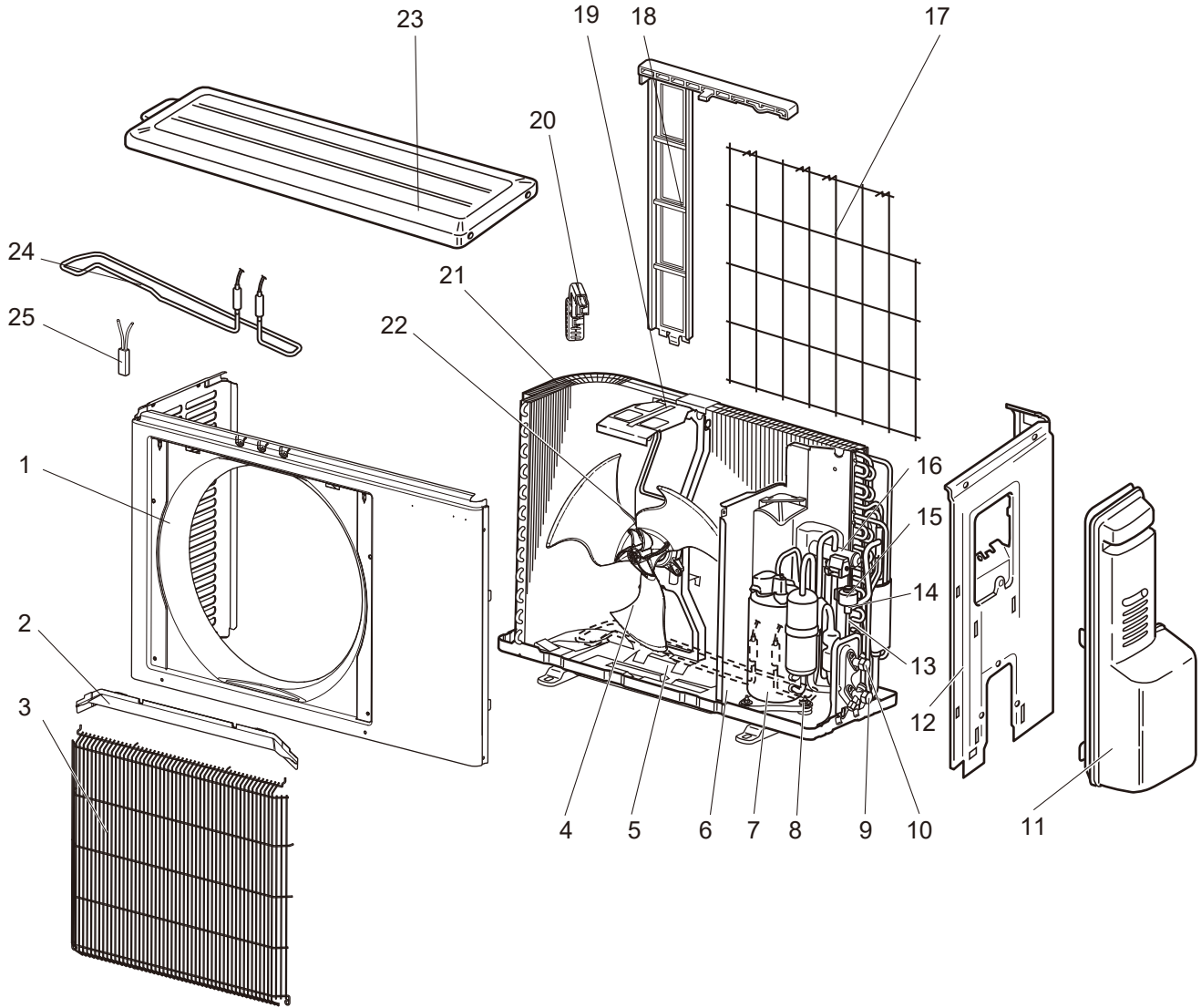
1-4. OUTDOOR UNIT ELECTRICAL PARTS

1. The part quantity below indicates the required number of pieces per unit.

No.	Part No.	Part Name	MUZ-LN25VGHZ- ^{ETI}	Symbol in Wiring Diagram	Remarks
26	E22 G11 337	REACTOR	1	L61	
27	E22 R81 306	THERMISTOR SET	1	RT61, RT62	DEFROST, DISCHARGE
28	E22 D65 308	AMBIENT TEMPERATURE THERMISTOR	1	RT65	
29	E22 P72 307	OUTDOOR HEAT EXCHANGER TEMPERATURE THERMISTOR	1	RT68	
30	E22 R81 490	R.V. COIL	1	21S4	
31	E22 T95 374	TERMINAL BLOCK	1	TB1	5P
32	E22 62E 451	INVERTER P.C. BOARD	1		Includes heat sink and RT64

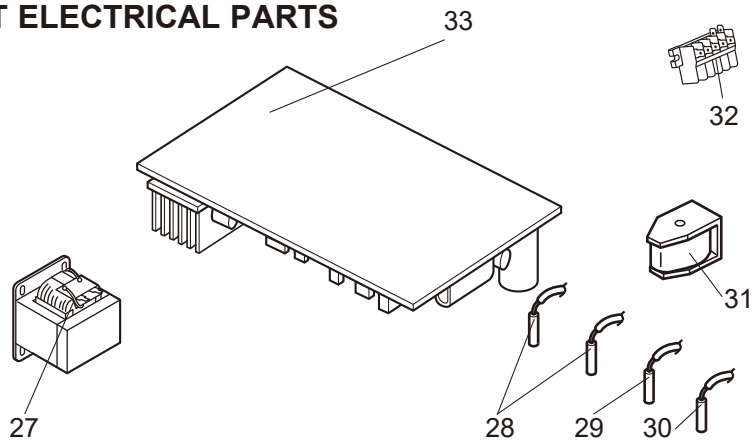
MUZ-LN25VGHZ2

1-5. OUTDOOR UNIT STRUCTURAL PARTS AND FUNCTIONAL PARTS



MUZ-LN25VGHZ2

1-6. OUTDOOR UNIT ELECTRICAL PARTS



1-5. OUTDOOR UNIT STRUCTURAL PARTS AND FUNCTIONAL PARTS

1. The part quantity below indicates the required number of pieces per unit.
2. The circled No. indicates that the part is not shown in the figure.

No.	Part No.	Part Name	MUZ-LN25VGHZ2- ^[E1]	MUZ-LN25VGHZ2- ^[ERT]	MUZ-LN25VGHZ2- ^[E2]	Symbol in Wiring Diagram	Remarks
1	E22 J63 232	CABINET	1	1	1		
2	E22 J63 531	ICE GUARD	1	1	1		
3	E22 Y84 521	GRILLE	1	1	1		
4	E22 95B 501	PROPELLER FAN	1	1	1		
5	E22 Y96 290	BASE	1	1	1		
6	E22 G14 293	SEPARATOR	1	1	1		
7	E22 Y85 900	COMPRESSOR	1	1	1	MC	SVB092FBAMT
8	E22 C34 506	COMPRESSOR RUBBER SET	3	3	3		3 RUBBERS/SET
9	E22 T66 661	STOP VALVE (GAS)	1	1	1		ø9.52
10	E22 T66 662	STOP VALVE (LIQUID)	1	1	1		ø6.35
11	E22 L59 245	SERVICE PANEL	1	1	1		
12	E22 G15 233	BACK PANEL	1	1	1		
13	E22 21G 645	EXPANSION VALVE ASSEMBLY	1	1	1		Includes LEV body and capillary tube
14	E22 Y84 640	EXPANSION VALVE	1	1	1		
15	E22 Y84 493	EXPANSION VALVE COIL	1	1	1	LEV	
16	E22 R81 961	4-WAY VALVE	1	1	1		
17	E22 930 525	CONDENSER WIRE NET	1	1	1		
18	E22 930 523	CONDENSER NET	1	1	1		
19	E22 14F 515	MOTOR SUPPORT	1	1	1		
20	E22 D84 079	THERMO HOLDER	1	1	1		
21	E22 Y84 630	OUTDOOR HEAT EXCHANGER	1	1	1		
22	E22 97B 301	OUTDOOR FAN MOTOR	1	1	1	MF	RC0J50-□□
23	E22 L85 297	TOP PANEL	1	1	1		
24	E22 Y96 526	DEFROST HEATER	1	1	1	H	Includes lead assembly
25	E22 D65 381	HEATER PROTECTOR	1	1	1	26H	
②6	E22 J47 936	CAPILLARY TUBE	1	1	1		ø4.0×ø2.4×240

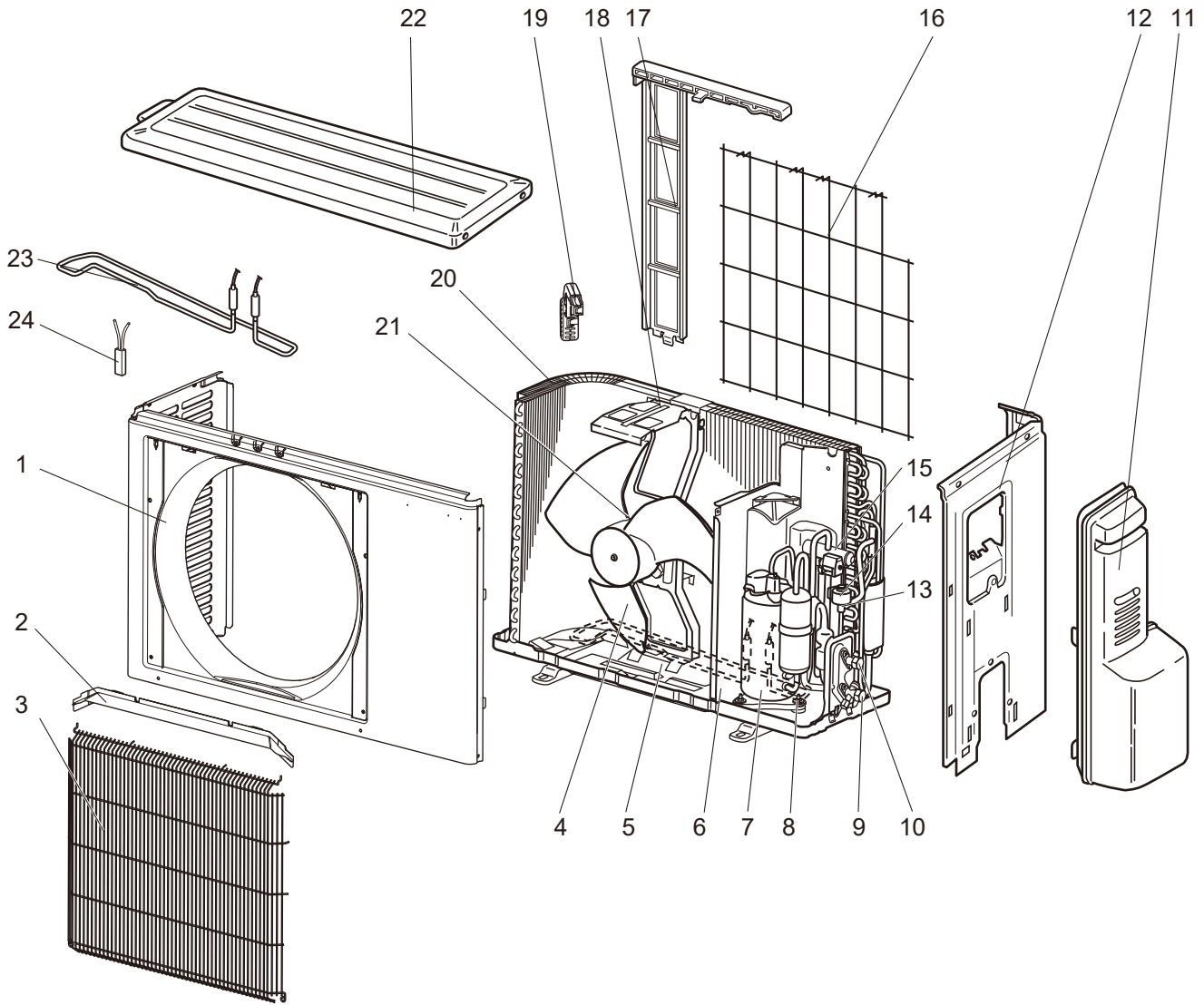
1-6. OUTDOOR UNIT ELECTRICAL PARTS

1. The part quantity below indicates the required number of pieces per unit.

No.	Part No.	Part Name	MUZ-LN25VGHZ2- ^[E1]	MUZ-LN25VGHZ2- ^[ERT]	MUZ-LN25VGHZ2- ^[E2]	Symbol in Wiring Diagram	Remarks
27	E22 20A 337	REACTOR	1	1	1	L61	
28	E22 R81 306	THERMISTOR SET	1	1	1	RT61, RT62	DEFROST, DISCHARGE
29	E22 D65 308	AMBIENT TEMPERATURE THERMISTOR	1	1	1	RT65	
30	E22 P72 307	OUTDOOR HEAT EXCHANGER TEMPERATURE THERMISTOR	1	1	1	RT68	
31	E22 R81 490	R.V. COIL	1	1	1	21S4	
32	E22 T95 374	TERMINAL BLOCK	1	1	1	TB1	5P
33	E22 38J 451	INVERTER P.C. BOARD	1	1	1		Includes heat sink and RT64

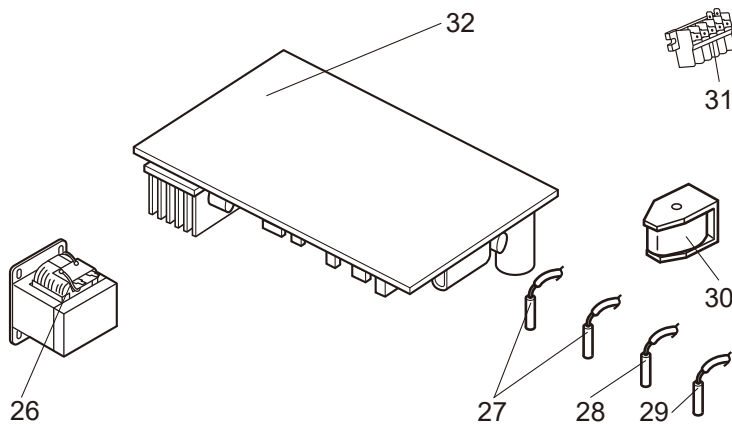
MUZ-LN35VGHZ

1-7. OUTDOOR UNIT STRUCTURAL PARTS AND FUNCTIONAL PARTS



MUZ-LN35VGHZ

1-8. OUTDOOR UNIT ELECTRICAL PARTS



1-7. OUTDOOR UNIT STRUCTURAL PARTS AND FUNCTIONAL PARTS

1. The part quantity below indicates the required number of pieces per unit.
2. The circled No. indicates that the part is not shown in the figure.

No.	Part No.	Part Name	MUZ-LN35VGHZ- ^{IE1}	MUZ-LN35VGHZ- ^{ERT}	Symbol in Wiring Diagram	Remarks
1	E22 J63 232	CABINET	1	1		
2	E22 J63 531	ICE GUARD	1	1		
3	E22 Y84 521	GRILLE	1	1		
4	E22 927 501	PROPELLER FAN	1	1		
5	E22 Y96 290	BASE	1	1		
6	E22 G14 293	SEPARATOR	1	1		
7	E22 R83 900	COMPRESSOR	1	1	MC	SVB130FBBMT
8	E22 C34 506	COMPRESSOR RUBBER SET	3	3		3 RUBBERS/SET
9	E22 T66 661	STOP VALVE (GAS)	1	1		ø9.52
10	E22 T66 662	STOP VALVE (LIQUID)	1	1		ø6.35
11	E22 L59 245	SERVICE PANEL	1	1		
12	E22 G15 233	BACK PANEL	1	1		
13	E22 Y84 640	EXPANSION VALVE	1	1		
14	E22 Y84 493	EXPANSION VALVE COIL	1	1	LEV	
15	E22 R81 961	4-WAY VALVE	1	1		
16	E22 930 525	CONDENSER WIRE NET	1	1		
17	E22 930 523	CONDENSER NET	1	1		
18	E22 929 515	MOTOR SUPPORT	1	1		
19	E22 D84 079	THERMO HOLDER	1	1		
20	E22 Y84 630	OUTDOOR HEAT EXCHANGER	1	1		
21	E22 Y84 301	OUTDOOR FAN MOTOR	1	1	MF	RC0J50-□□
22	E22 L85 297	TOP PANEL	1	1		
23	E22 Y96 526	DEFROST HEATER	1	1		Includes lead assembly
24	E22 D65 381	HEATER PROTECTOR	1	1		
②5	E22 P72 936	CAPILLARY TUBE	1	1		ø4.0×ø2.4×240

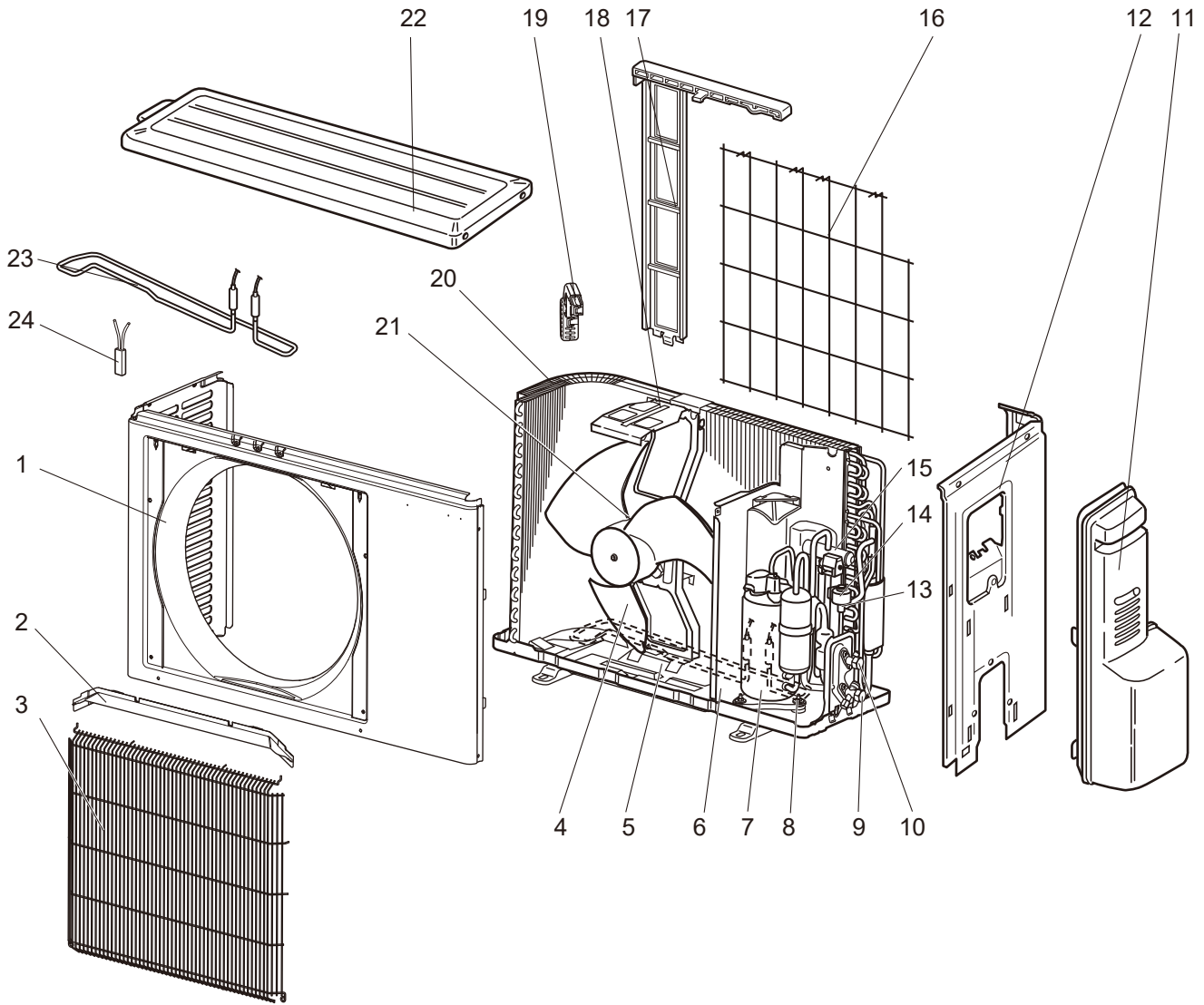
1-8. OUTDOOR UNIT ELECTRICAL PARTS

1. The part quantity below indicates the required number of pieces per unit.

No.	Part No.	Part Name	MUZ-LN35VGHZ- ^{IE1}	MUZ-LN35VGHZ- ^{ERT}	Symbol in Wiring Diagram	Remarks
26	E22 G11 337	REACTOR	1	1	L61	
27	E22 R81 306	THERMISTOR SET	1	1	RT61, RT62	DEFROST, DISCHARGE
28	E22 D65 308	AMBIENT TEMPERATURE THERMISTOR	1	1	RT65	
29	E22 P72 307	OUTDOOR HEAT EXCHANGER TEMPERATURE THERMISTOR	1	1	RT68	
30	E22 R81 490	R.V. COIL	1	1	21S4	
31	E22 T95 374	TERMINAL BLOCK	1	1	TB1	5 P
32	E22 63E 451	INVERTER P.C. BOARD	1	1		Includes heat sink and RT64

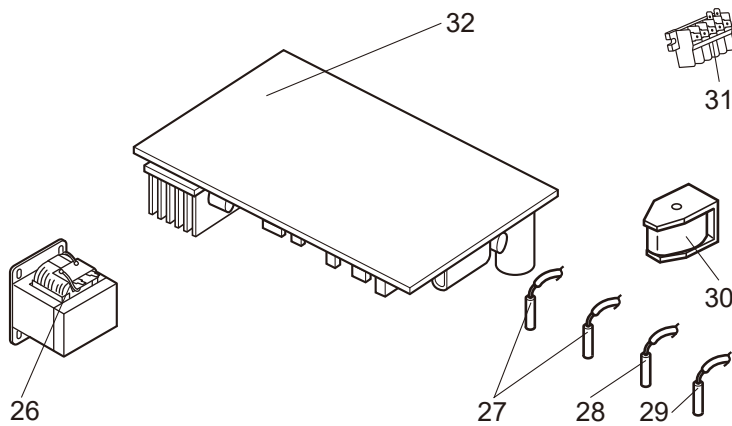
MUZ-LN35VGHZ

1-9. OUTDOOR UNIT STRUCTURAL PARTS AND FUNCTIONAL PARTS



MUZ-LN35VGHZ

1-10. OUTDOOR UNIT ELECTRICAL PARTS



1-9. OUTDOOR UNIT STRUCTURAL PARTS AND FUNCTIONAL PARTS

1. The part quantity below indicates the required number of pieces per unit.
2. The circled No. indicates that the part is not shown in the figure.

No.	Part No.	Part Name	MUZ-LN35VGHZ- ^[ET]	Symbol in Wiring Diagram	Remarks
1	E22 J63 232	CABINET	1		
2	E22 J63 531	ICE GUARD	1		
3	E22 Y84 521	GRILLE	1		
4	E22 927 501	PROPELLER FAN	1		
5	E22 Y96 290	BASE	1		
6	E22 G14 293	SEPARATOR	1		
7	E22 R83 900	COMPRESSOR	1	MC	SVB130FBBMT
8	E22 C34 506	COMPRESSOR RUBBER SET	3		3 RUBBERS/SET
9	E22 T66 661	STOP VALVE (GAS)	1		ø9.52
10	E22 T66 662	STOP VALVE (LIQUID)	1		ø6.35
11	E22 L59 245	SERVICE PANEL	1		
12	E22 G15 233	BACK PANEL	1		
13	E22 Y84 640	EXPANSION VALVE	1		
14	E22 Y84 493	EXPANSION VALVE COIL	1	LEV	
15	E22 R81 961	4-WAY VALVE	1		
16	E22 930 525	CONDENSER WIRE NET	1		
17	E22 930 523	CONDENSER NET	1		
18	E22 929 515	MOTOR SUPPORT	1		
19	E22 D84 079	THERMO HOLDER	1		
20	E22 Y84 630	OUTDOOR HEAT EXCHANGER	1		
21	E22 Y84 301	OUTDOOR FAN MOTOR	1	MF	RC0J50-□□
22	E22 L85 297	TOP PANEL	1		
23	E22 Y96 526	DEFROST HEATER	1	H	Includes lead assembly
24	E22 D65 381	HEATER PROTECTOR	1	26H	
②5	E22 P72 936	CAPILLARY TUBE	1		ø4.0×ø2.4×240

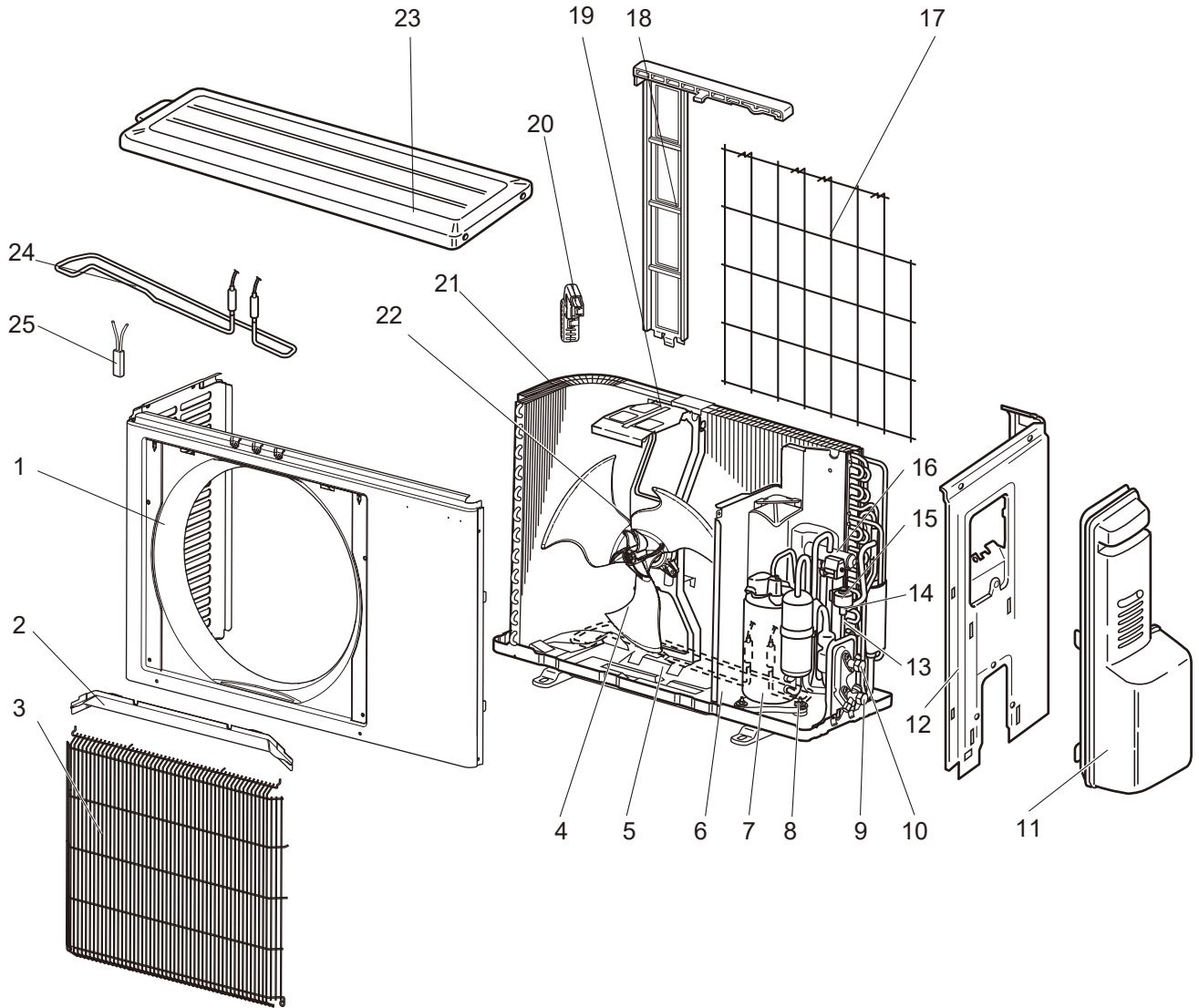
1-10. OUTDOOR UNIT ELECTRICAL PARTS

1. The part quantity below indicates the required number of pieces per unit.

No.	Part No.	Part Name	MUZ-LN35VGHZ- ^[ET]	Symbol in Wiring Diagram	Remarks
26	E22 G11 337	REACTOR	1	L61	
27	E22 R81 306	THERMISTOR SET	1	RT61, RT62	DEFROST, DISCHARGE
28	E22 D65 308	AMBIENT TEMPERATURE THERMISTOR	1	RT65	
29	E22 P72 307	OUTDOOR HEAT EXCHANGER TEMPERATURE THERMISTOR	1	RT68	
30	E22 R81 490	R.V. COIL	1	21S4	
31	E22 T95 374	TERMINAL BLOCK	1	TB1	5 P
32	E22 63E 451	INVERTER P.C. BOARD	1		Includes heat sink and RT64

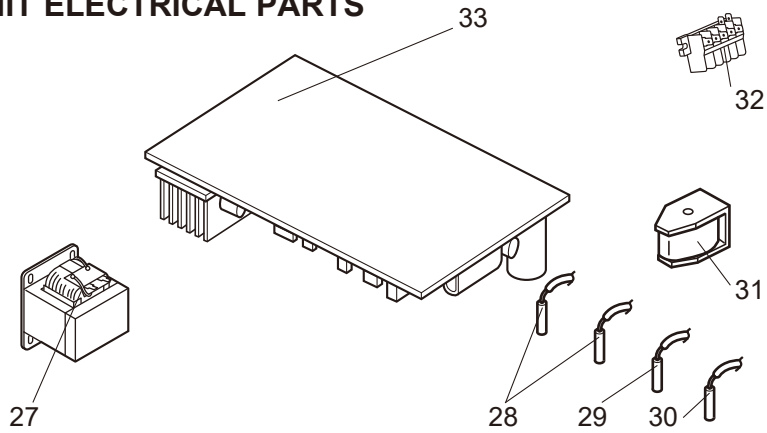
MUZ-LN35VGHZ2

1-11. OUTDOOR UNIT STRUCTURAL PARTS AND FUNCTIONAL PARTS



MUZ-LN35VGHZ2

1-12. OUTDOOR UNIT ELECTRICAL PARTS



1-11. OUTDOOR UNIT STRUCTURAL PARTS AND FUNCTIONAL PARTS

1. The part quantity below indicates the required number of pieces per unit.
2. The circled No. indicates that the part is not shown in the figure.

No.	Part No.	Part Name	MUZ-LN35VGHZ2- ^{E1}	MUZ-LN35VGHZ2- ^{ER1}	MUZ-LN35VGHZ2- ^{E2}	Symbol in Wiring Diagram	Remarks
1	E22 J63 232	CABINET	1	1	1		
2	E22 J63 531	ICE GUARD	1	1	1		
3	E22 Y84 521	GRILLE	1	1	1		
4	E22 95B 501	PROPELLER FAN	1	1	1		
5	E22 Y96 290	BASE	1	1	1		
6	E22 G14 293	SEPARATOR	1	1	1		
7	E22 R83 900	COMPRESSOR	1	1	1	MC	SVB130FBBMT
8	E22 C34 506	COMPRESSOR RUBBER SET	3	3	3		3 RUBBERS/SET
9	E22 T66 661	STOP VALVE (GAS)	1	1	1		ø9.52
10	E22 T66 662	STOP VALVE (LIQUID)	1	1	1		ø6.35
11	E22 L59 245	SERVICE PANEL	1	1	1		
12	E22 G15 233	BACK PANEL	1	1	1		
13	E22 21G 645	EXPANSION VALVE ASSEMBLY	1	1	1		Includes LEV body and capillary tube
14	E22 Y84 640	EXPANSION VALVE	1	1	1		
15	E22 Y84 493	EXPANSION VALVE COIL	1	1	1	LEV	
16	E22 R81 961	4-WAY VALVE	1	1	1		
17	E22 930 525	CONDENSER WIRE NET	1	1	1		
18	E22 930 523	CONDENSER NET	1	1	1		
19	E22 14F 515	MOTOR SUPPORT	1	1	1		
20	E22 D84 079	THERMO HOLDER	1	1	1		
21	E22 Y84 630	OUTDOOR HEAT EXCHANGER	1	1	1		
22	E22 97B 301	OUTDOOR FAN MOTOR	1	1	1	MF	RC0J50-□□
23	E22 L85 297	TOP PANEL	1	1	1		
24	E22 Y96 526	DEFROST HEATER	1	1	1	H	Includes lead assembly
25	E22 D65 381	HEATER PROTECTOR	1	1	1	26H	
(26)	E22 J47 936	CAPILLARY TUBE	1	1	1		ø4.0×ø2.4×240

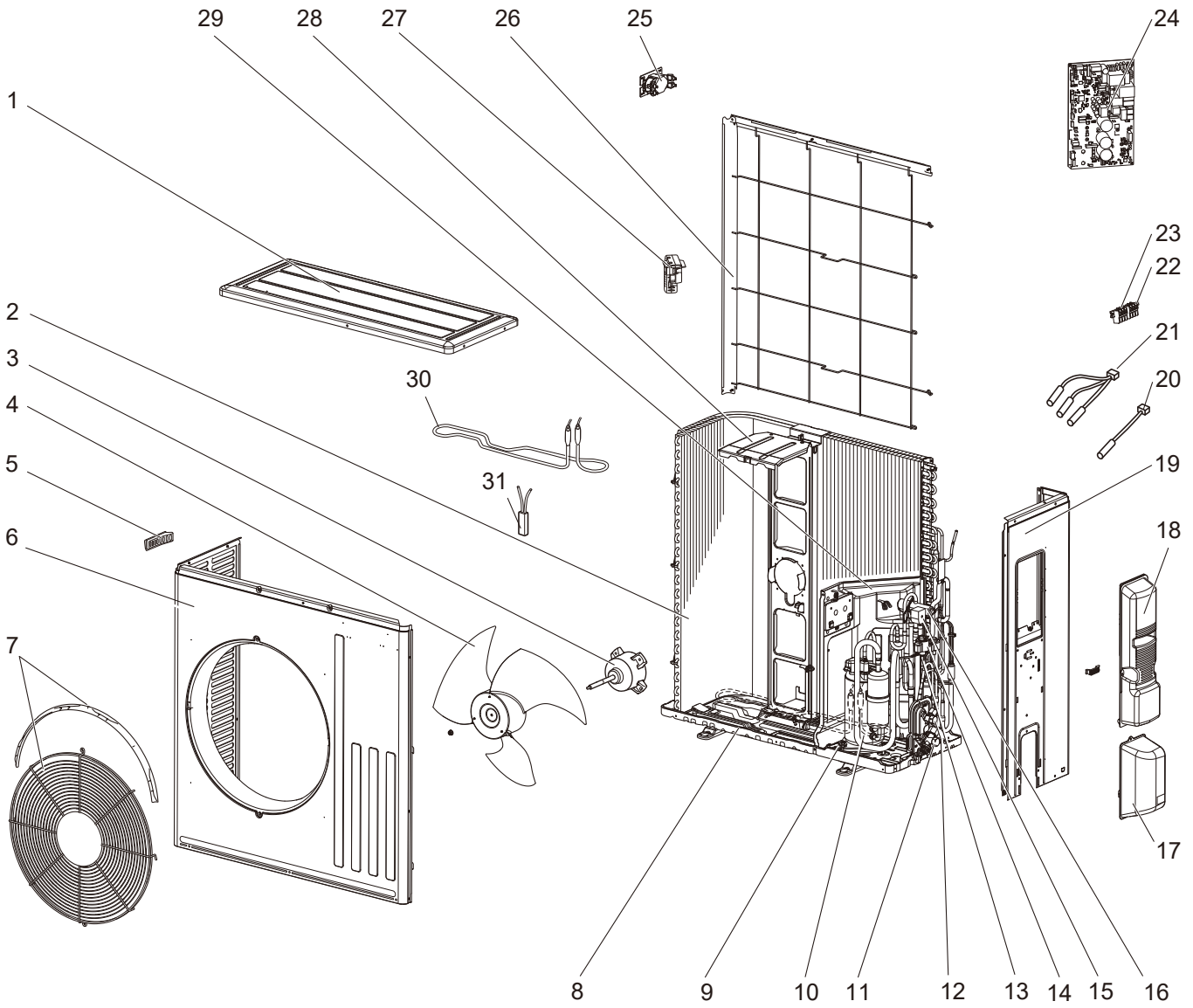
1-12. OUTDOOR UNIT ELECTRICAL PARTS

1. The part quantity below indicates the required number of pieces per unit.

No.	Part No.	Part Name	MUZ-LN35VGHZ2- ^{E1}	MUZ-LN35VGHZ2- ^{ER1}	MUZ-LN35VGHZ2- ^{E2}	Symbol in Wiring Diagram	Remarks
27	E22 20A 337	REACTOR	1	1	1	L61	
28	E22 R81 306	THERMISTOR SET	1	1	1	RT61, RT62	DEFROST, DISCHARGE
29	E22 D65 308	AMBIENT TEMPERATURE THERMISTOR	1	1	1	RT65	
30	E22 P72 307	OUTDOOR HEAT EXCHANGER TEMPERATURE THERMISTOR	1	1	1	RT68	
31	E22 R81 490	R.V. COIL	1	1	1	21S4	
32	E22 T95 374	TERMINAL BLOCK	1	1	1	TB1	5P
33	E22 39J 451	INVERTER P.C. BOARD	1	1	1		Includes heat sink and RT64

MUZ-LN50VGHZ

1-13. OUTDOOR UNIT STRUCTURAL PARTS, ELECTRICAL PARTS AND FUNCTIONAL PARTS



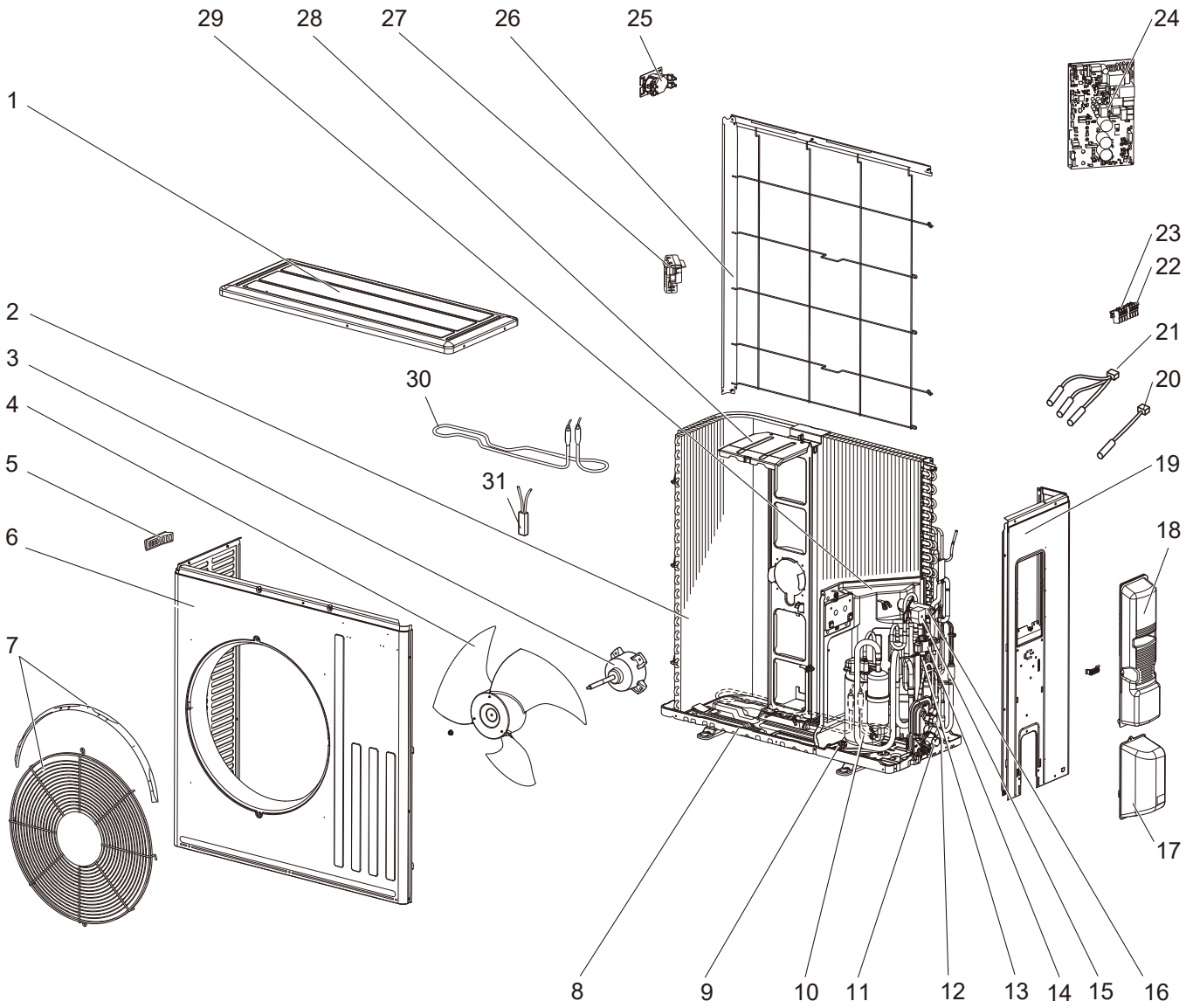
1-13. OUTDOOR UNIT STRUCTURAL PARTS, ELECTRICAL PARTS AND FUNCTIONAL PARTS

1. The part quantity below indicates the required number of pieces per unit.
2. The circled No. indicates that the part is not shown in the figure.

No.	Part No.	Part Name	MUZ-LN50VGHZ- ^[E1]	MUZ-LN50VGHZ- ^[ERT]	MUZ-LN50VGHZ- ^[E2]	Symbol in Wiring Diagram	Remarks
1	E22 L87 297	TOP PANEL	1	1	1		
2	E22 Y87 630	OUTDOOR HEAT EXCHANGER	1	1	1		
3	E22 F28 301	OUTDOOR FAN MOTOR	1	1	1	MF	RC0J60-□□
4	E22 F28 501	PROPELLER FAN	1	1	1		
5	E22 817 009	HANDLE	1	1	1		
6	E22 R13 232	CABINET	1	1	1		
7	E22 Y87 521	FAN GUARD	1	1	1		Includes ice guard
8	E22 H25 290	BASE	1	1	1		
9	E22 C34 506	COMPRESSOR RUBBER SET	3	3	3		3 RUBBERS/SET
10	E22 R86 900	COMPRESSOR	1	1	1	MC	SVB172FCKMT
11	E22 R84 661	STOP VALVE (GAS)	1	1	1		ø9.52
12	E22 G16 662	STOP VALVE (LIQUID)	1	1	1		ø6.35
13	E22 Y84 640	EXPANSION VALVE	1	1	1		
14	E22 Y87 493	EXPANSION VALVE COIL	1	1	1	LEV	
15	E22 R84 490	R.V. COIL	1	1	1	21S4	
16	E22 J44 961	4-WAY VALVE	1	1	1		
17	E22 F28 650	VALVE COVER	1	1	1		
18	E22 Y87 245	SERVICE PANEL	1	1	1		
19	E22 J52 233	BACK PANEL	1	1	1		
20	E22 J52 309	AMBIENT TEMPERATURE THERMISTOR	1	1	1	RT65	
21	E22 R84 308	THERMISTOR SET	1	1	1	RT61, RT62, RT68	DEFROST, DISCHARGE, OUTDOOR HEAT EXCHANGER TEMPERATURE
22	E22 F29 374	TERMINAL BLOCK	1	1	1	TB1	3 P
23	E22 T16 374	TERMINAL BLOCK	1	1	1	TB2	3 P
24	E22 Y98 451	INVERTER P.C. BOARD	1	1	1		Includes heat sink and RT64
25	E22 R84 337	REACTOR	1	1	1	L	
26	E22 L87 523	CONDENSER NET	1	1	1		
27	E22 M09 079	THERMO HOLDER	1	1	1		
28	E22 J52 515	MOTOR SUPPORT	1	1	1		
29	E22 Y98 293	SEPARATOR	1	1	1		
30	E22 J52 526	DEFROST HEATER	1	1	1	H	
31	E22 J52 381	HEATER PROTECTOR	1	1	1	26H	
③2	E22 527 936	CAPILLARY TUBE	1	1	1		ø4.0 × ø2.4 × 100

MUZ-LN50VGHZ

1-14. OUTDOOR UNIT STRUCTURAL PARTS, ELECTRICAL PARTS AND FUNCTIONAL PARTS



1-14. OUTDOOR UNIT STRUCTURAL PARTS, ELECTRICAL PARTS AND FUNCTIONAL PARTS

1. The part quantity below indicates the required number of pieces per unit.
2. The circled No. indicates that the part is not shown in the figure.

No.	Part No.	Part Name	MUZ-LN50VGHZ-ET1	Symbol in Wiring Diagram	Remarks
1	E22 L87 297	TOP PANEL	1		
2	E22 Y87 630	OUTDOOR HEAT EXCHANGER	1		
3	E22 F28 301	OUTDOOR FAN MOTOR	1	MF	RC0J60-□□
4	E22 F28 501	PROPELLER FAN	1		
5	E22 817 009	HANDLE	1		
6	E22 R13 232	CABINET	1		
7	E22 Y87 521	FAN GUARD	1		Includes ice guard
8	E22 H25 290	BASE	1		
9	E22 C34 506	COMPRESSOR RUBBER SET	3		3 RUBBERS/SET
10	E22 R86 900	COMPRESSOR	1	MC	SVB172FCKMT
11	E22 R84 661	STOP VALVE (GAS)	1		ø9.52
12	E22 G16 662	STOP VALVE (LIQUID)	1		ø6.35
13	E22 Y84 640	EXPANSION VALVE	1		
14	E22 Y87 493	EXPANSION VALVE COIL	1	LEV	
15	E22 R84 490	R.V. COIL	1	21S4	
16	E22 J44 961	4-WAY VALVE	1		
17	E22 F28 650	VALVE COVER	1		
18	E22 Y87 245	SERVICE PANEL	1		
19	E22 J52 233	BACK PANEL	1		
20	E22 J52 309	AMBIENT TEMPERATURE THERMISTOR	1	RT65	
21	E22 R84 308	THERMISTOR SET	1	RT61, RT62, RT68	DEFROST, DISCHARGE, OUTDOOR HEAT EXCHANGER TEMPERATURE
22	E22 F29 374	TERMINAL BLOCK	1	TB1	3 P
23	E22 T16 374	TERMINAL BLOCK	1	TB2	3 P
24	E22 Y98 451	INVERTER P.C. BOARD	1		Includes heat sink and RT64
25	E22 R84 337	REACTOR	1	L	
26	E22 L87 523	CONDENSER NET	1		
27	E22 M09 079	THERMO HOLDER	1		
28	E22 J52 515	MOTOR SUPPORT	1		
29	E22 Y98 293	SEPARATOR	1		
30	E22 J52 526	DEFROST HEATER	1	H	
31	E22 J52 381	HEATER PROTECTOR	1	26H	
32	E22 527 936	CAPILLARY TUBE	1		ø4.0 × ø2.4 × 100

MITSUBISHI ELECTRIC CORPORATION

HEAD OFFICE: TOKYO BUILDING, 2-7-3, MARUNOUCHI, CHIYODA-KU, TOKYO 100-8310, JAPAN

© Copyright 2017 MITSUBISHI ELECTRIC CORPORATION

Issued: Feb. 2021. No. OBB768 REVISED EDITION-D

Issued: Dec. 2020. No. OBB768 REVISED EDITION-C

Issued: Dec. 2019. No. OBB768 REVISED EDITION-B

Issued: Jun. 2018. No. OBB768 REVISED EDITION-A

Published: Feb. 2017. No. OBB768

Made in Japan

Specifications are subject to change without notice.