

Revision K:

• MUZ-HR25/35/42/50VF- [E4], [ET4] have been added.

OBB823 REVISED EDITION-J is void.

OUTDOOR UNIT

PARTS CATALOG



**No. OBB823
REVISED EDITION-K**

Models

MUZ-HR25VF - [E1], [ER1], [ET1], [E2], [ER2], [ET2], [E3], [ER3], [ET3], [E4], [ET4]

MUZ-HR35VF - [E1], [ER1], [ET1], [E2], [ER2], [ET2], [E3], [ER3], [ET3], [E4], [ET4]

MUZ-HR42VF - [E1], [ER1], [ET1], [E2], [ER2], [ET2], [E3], [ER3], [ET3], [E4], [ET4]

MUZ-HR50VF - [E1], [ER1], [ET1], [E2], [ER2], [ET2], [E3], [ER3], [ET3], [E4], [ET4]

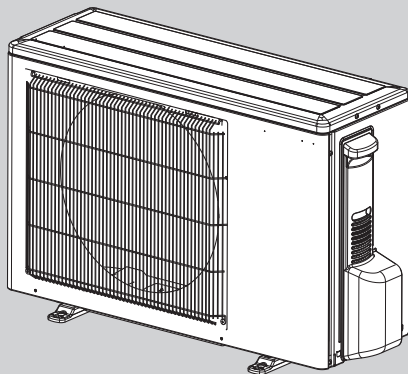
MUZ-HR60VF - [E1], [ER1], [ET1], [E2], [ER2], [ET2], [E3]

MUZ-HR71VF - [E1], [ER1], [ET1], [E2], [ER2], [ET2], [E3]

CONTENTS

1. SERVICE PARTS LIST2

SERVICE MANUAL (OBH823)



**MUZ-HR42VF
MUZ-HR50VF**

Revision A:

- Some descriptions have been modified.

Revision B:

- MUZ-HR60/71VF- [E1], [ET1] have been added.

Revision C:

- MUZ-HR60/71VF- [ER1] have been added.

Revision D:

- MUZ-HR25/35/42/50VF- [E2], [ET2] have been added.

Revision E:

- MUZ-HR25/35/42/50VF- [ER2] and MUZ-HR60/71VF- [E2] have been added.

Revision F:

- MUZ-HR60/71VF- [E3] and MUZ-HR60/71VF- [ET2] have been added.

Revision G:

- MUZ-HR60/71VF- [ER2] have been added.

Revision H:

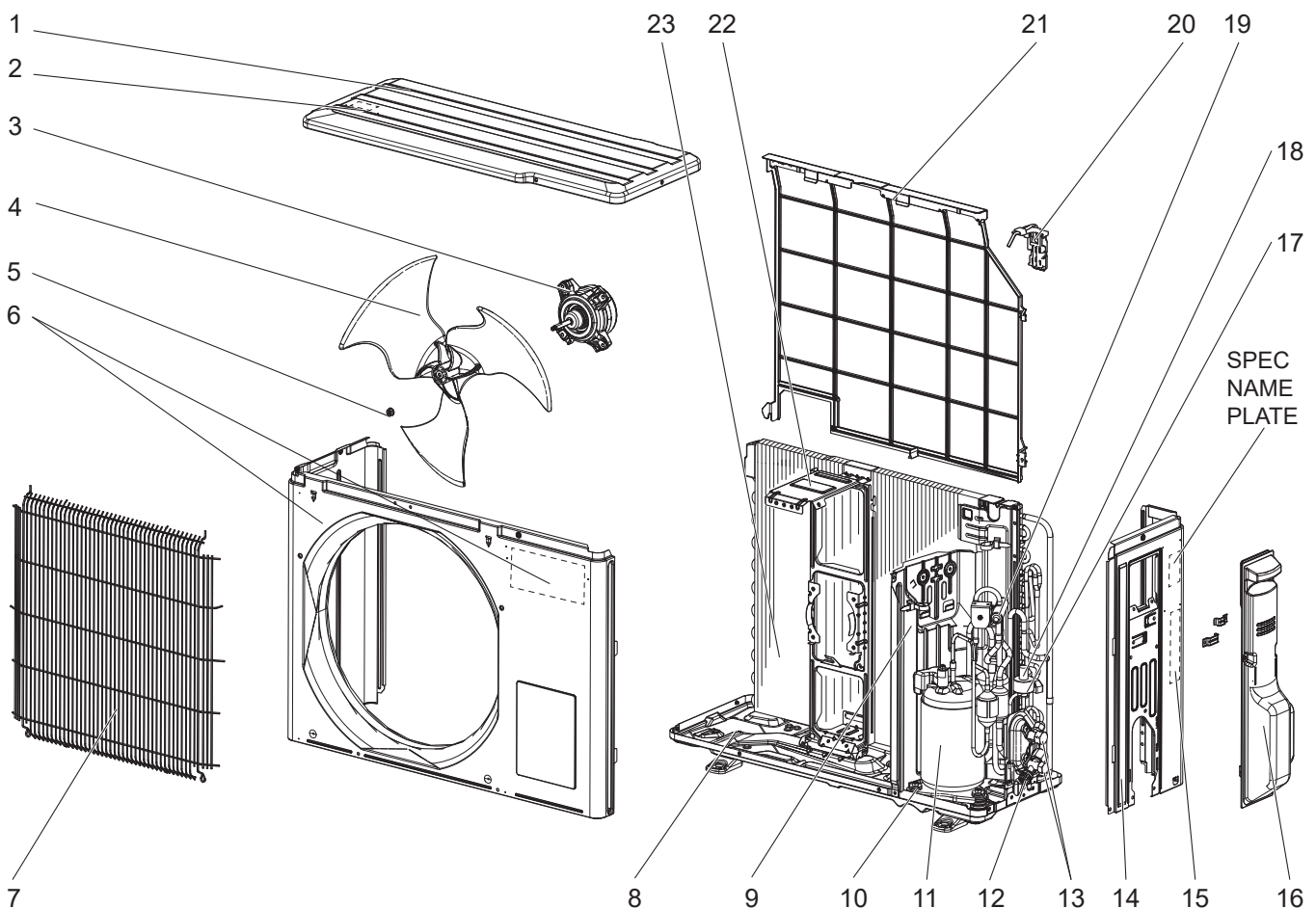
- MUZ-HR25/35/42/50VF- [E3], [ET3], [ER3] have been added.

Revision J:

- Part number of STOP VALVE ASSEMBLY for MUZ-HR42/50VF- [E3], [ER3], [ET3] have been changed.
- Some description have been modified.

Revision K:

- MUZ-HR25/35/42/50VF- [E4], [ET4] have been added.

1**SERVICE PARTS LIST****MUZ-HR25VF - [E1], [ER1], [ET1]****1-1. OUTDOOR UNIT STRUCTURAL PARTS AND FUNCTIONAL PARTS**

1-1. OUTDOOR UNIT STRUCTURAL PARTS AND FUNCTIONAL PARTS

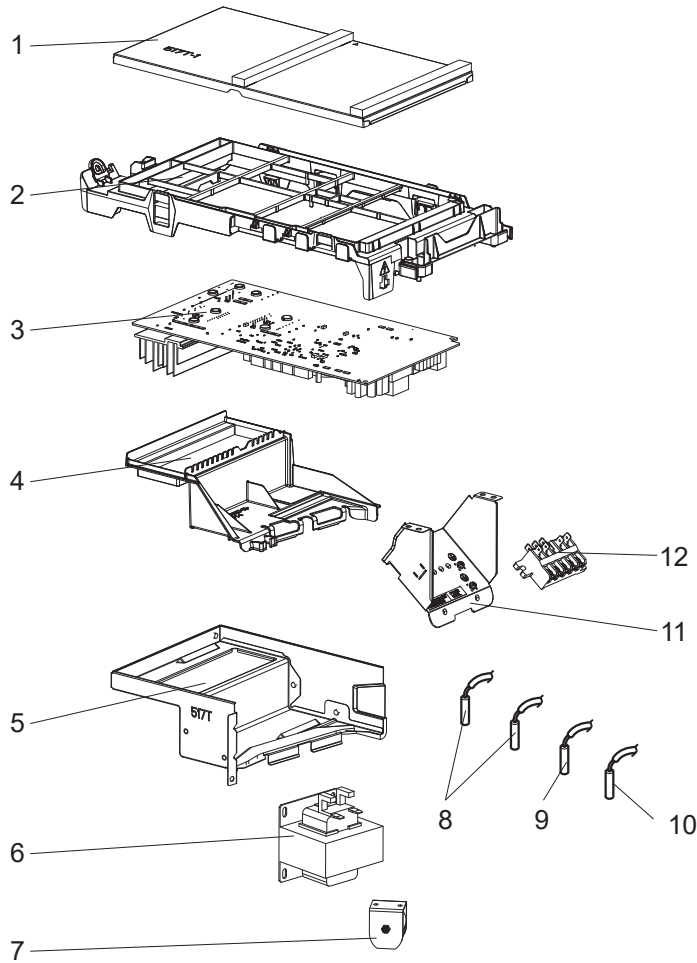
1. The part quantity below indicates the required number of pieces per unit.

2. The circled No. indicates that the part is not shown in the figure.

No.	Part No.	Part Name	MUZ-HR25VF- <input type="checkbox"/> ET1	MUZ-HR25VF- <input type="checkbox"/> ER1	MUZ-HR25VF- <input type="checkbox"/> ET1	Symbol in Wiring Diagram	Remarks [Drawing No.]
1	G2W 003 057	TOP PANEL ASSEMBLY	1	1	1		Not including No. 2 and wiring diagram
2	-	LABEL	1	1	1		[JG79R840H02]
3	G2W 002 350	OUTDOOR FAN MOTOR	1	1	1	MF	RC0J55-□□
4	G2W 001 550	PROPELLER FAN	1	1	1		
5	G2W 001 753	PROPELLER FAN NUT	1	1	1		
6	G2W 009 050	CABINET	1	1	1		Includes brand label
7	G2W 002 063	GRILLE	1	1	1		
8	G2W 003 055	BASE ASSEMBLY	1	1	1		
9	G2W 005 150	SEPARATOR	1	1	1		
10	G2W 001 773	COMPRESSOR RUBBER SET	3	3	3		3 RUBBERS/SET
11	G2W 003 650	COMPRESSOR	1	1	1	MC	KVB059FTMMC
12	-	PORT CAP	1	1	1		[DQ26T763H04]
13	G2W 002 655	STOP VALVE ASSEMBLY	1	1	1		Gas: ø9.52 Liquid: ø6.35 Includes pipes
14	G2W 004 060	BACK PANEL	1	1	1		Not including SPEC NAME PLATE or No. 15
15	-	LABEL	1	1			[DG79T575H01]
15	-	LABEL			1		[DG79T575H02]
16	G2W 002 053	SERVICE PANEL	1	1	1		
17	G2W 002 362	EXPANSION VALVE COIL	1	1	1	LEV	
18	G2W 005 668	EXPANSION VALVE ASSEMBLY	1	1	1		Includes capillary tube (2PCS: ø3.0 × ø2.0 × 260, ø3.0 × ø1.8 × 100)
19	G2W 002 665	4-WAY VALVE	1	1	1		
20	-	THERMO HOLDER (AMBIENT)	1	1	1		[JQ25A222G02]
21	G2W 003 065	CONDENSER WIRE NET	1	1	1		
22	G2W 003 154	MOTOR SUPPORT	1	1	1		
23	G2W 003 660	OUTDOOR HEAT EXCHANGER	1	1	1		
24	G2W 003 371	COMPRESSOR LEAD WIRE ASSEMBLY	1	1	1		

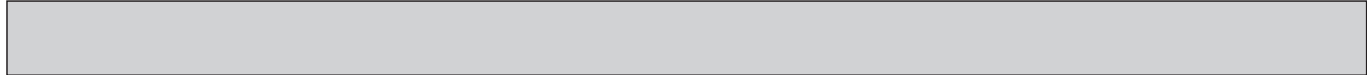
MUZ-HR25VF - [E1], [ER1], [ET1]

1-2. OUTDOOR UNIT ELECTRICAL PARTS



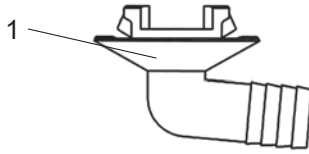
1. The part quantity below indicates the required number of pieces per unit.

No.	Part No.	Part Name	[E1]	[ER1]	[ET1]	Symbol in Wiring Diagram	Remarks [Drawing No.]
			MUZ-HR25VF -	MUZ-HR25VF -	MUZ-HR25VF -		
1	-	P.C. BOARD COVER	1	1	1		[DY02A874G01], [SQ33C889H24] (2 PCS)
2	-	P.C. BOARD SUPPORT	1	1	1		[DY25A872G03]
3	G2W 007 460	INVERTER P.C. BOARD	1	1	1		Includes heat sink and RT64
4	-	HEAT SINK HOLDER	1	1	1		[DY25A873G02]
5	-	HEAT SINK SUPPORT ASSEMBLY	1	1	1		[DY00B913G02]
6	G2W 001 359	REACTOR	1	1	1	L61	
7	G2W 002 365	R.V. COIL	1	1	1	21S4	
8	G2W 002 353	THERMISTOR SET	1	1	1	RT61, RT62	DEFROST, DISCHARGE TEMPERATURE
9	G2W 001 357	OUTDOOR HEAT EXCHANGER THERMISTOR	1	1	1	RT68	
10	G2W 002 355	AMBIENT TEMPERATURE THERMISTOR	1	1	1	RT65	
11	-	TERMINAL BLOCK SUPPORT	1	1	1		[DY00B917G04]
12	G2W 001 373	TERMINAL BLOCK	1	1	1	TB1	5 P(S1,S2, S3, L, N)



MUZ-HR25VF - [E1], [ER1], [ET1]

1-3. DRAIN SOCKET

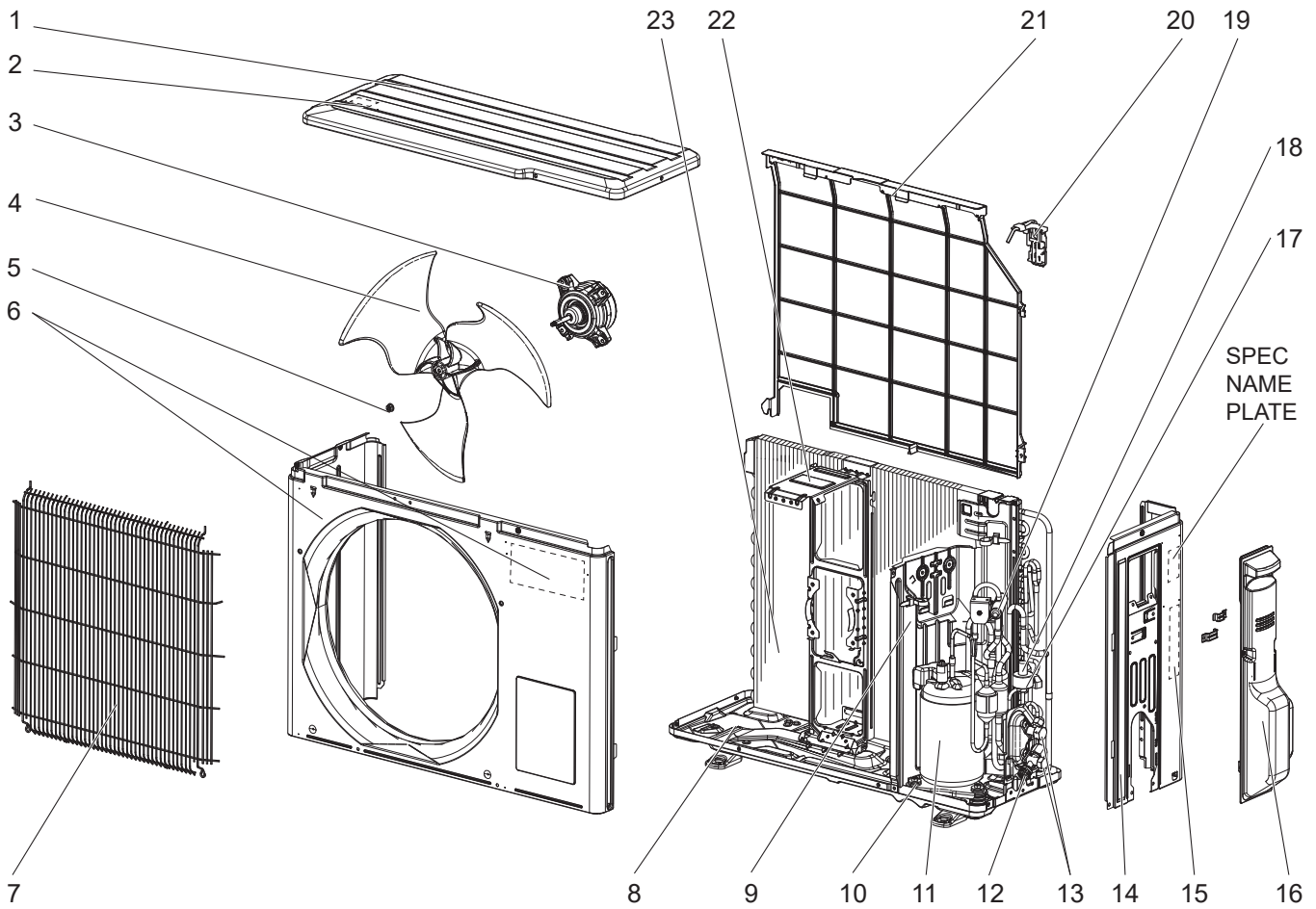


1. The part quantity below indicates the required number of pieces per unit.

No.	Part No.	Part Name	MUZ-HR25VF - [E1]	MUZ-HR25VF - [ER1]	MUZ-HR25VF - [ET1]	Symbol in Wiring Diagram	Remarks
1	G2W 001 765	DRAIN SOCKET	1	1	1		

MUZ-HR25VF - [E2], [ER2], [ET2], [E3], [ER3], [ET3], [E4], [ET4]

1-4. OUTDOOR UNIT STRUCTURAL PARTS AND FUNCTIONAL PARTS



1-4. OUTDOOR UNIT STRUCTURAL PARTS AND FUNCTIONAL PARTS

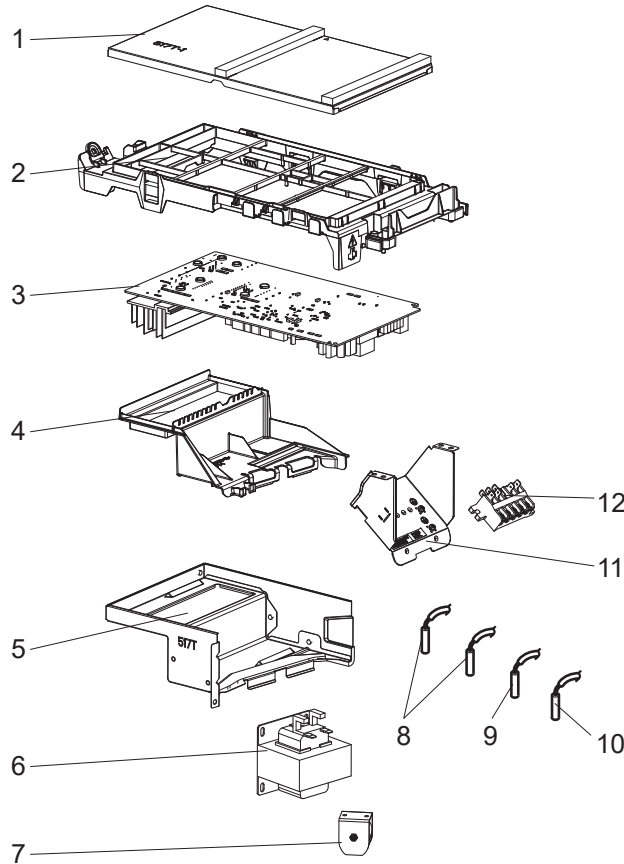
1. The part quantity below indicates the required number of pieces per unit.

2. The circled No. indicates that the part is not shown in the figure.

No.	Part No.	Part Name	MUZ-HR25VF								Symbol in Wiring Diagram	Remarks [Drawing No.]
			-E2	-ER2	-ET2	-E3	-ER3	-ET3	-E4	-ET4		
1	G2W 003 057	TOP PANEL ASSEMBLY	1	1	1	1	1	1	1	1		Not including No. 2 and wiring diagram
2	-	LABEL	1	1	1	1	1	1	1	1		[JG79R840H02]
3	G2W 002 350	OUTDOOR FAN MOTOR	1	1	1					1	MF	RC0J55-□□
3	G2W 003 350	OUTDOOR FAN MOTOR				1	1	1			MF	RC0J37-□□
4	G2W 001 550	PROPELLER FAN	1	1	1	1	1	1	1	1		
5	G2W 001 753	PROPELLER FAN NUT	1	1	1	1	1	1	1	1		
6	G2W 009 050	CABINET	1	1	1	1	1	1	1	1		Includes brand label
7	G2W 002 063	GRILLE	1	1	1	1	1	1	1	1		
8	G2W 003 055	BASE ASSEMBLY	1	1	1	1	1	1	1	1		
9	G2W 005 150	SEPARATOR	1	1	1	1	1	1	1	1		
10	G2W 001 773	COMPRESSOR RUBBER SET	3	3	3	3	3	3	3	3		3 RUBBERS/SET
11	G2W 003 650	COMPRESSOR	1	1	1	1	1	1	1	1	MC	KVB059FTMMC
12	-	PORT CAP	1	1	1							[DQ26T763H04]
13	G2W 002 655	STOP VALVE ASSEMBLY	1	1	1	1	1	1	1	1		Gas: ø9.52 Liquid: ø6.35 Includes pipes
14	G2W 004 060	BACK PANEL	1	1	1	1	1	1	1	1		Includes CABLE CLAMP Not including SPEC NAME PLATE or No. 15
15	-	LABEL	1	1		1	1		1			[DG79T575H01]
15	-	LABEL			1			1		1		[DG79T575H02]
16	G2W 002 053	SERVICE PANEL	1	1	1	1	1	1	1	1		
17	G2W 003 362	EXPANSION VALVE COIL	1	1	1	1	1	1	1	1	LEV	
18	G2W 004 668	EXPANSION VALVE ASSEMBLY	1	1	1	1	1	1	1	1		Includes capillary tube (2PCS: ø3.0 × ø2.0 × 260, ø3.0 × ø1.8 × 100)
19	G2W 002 665	4-WAY VALVE	1	1	1	1	1	1	1	1		
20	-	THERMO HOLDER (AMBIENT)	1	1	1	1	1	1	1	1		[JQ25A222G02]
21	G2W 003 065	CONDENSER WIRE NET	1	1	1	1	1	1	1	1		
22	G2W 003 154	MOTOR SUPPORT	1	1	1	1	1	1	1	1		
23	G2W 003 660	OUTDOOR HEAT EXCHANGER	1	1	1	1	1	1	1	1		
24	G2W 003 371	COMPRESSOR LEAD WIRE ASSEMBLY	1	1	1	1	1	1	1	1		

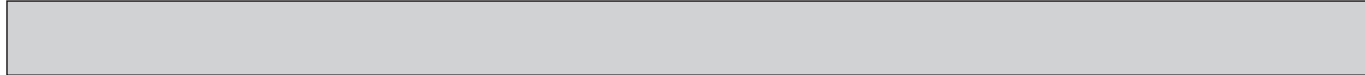
MUZ-HR25VF - [E2], [ER2], [ET2], [E3], [ER3], [ET3], [E4], [ET4]

1-5. OUTDOOR UNIT ELECTRICAL PARTS



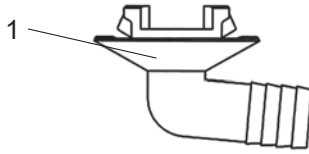
1. The part quantity below indicates the required number of pieces per unit.

No.	Part No.	Part Name	[E2]	[ER2]	[ET2]	[E3]	[ER3]	[ET3]	[E4]	[ET4]	Symbol in Wiring Diagram	Remarks [Drawing No.]
			MUZ-HR25VF -	MUZ-HR25VF -	MUZ-HR25VF -	MUZ-HR25VF -	MUZ-HR25VF -	MUZ-HR25VF -	MUZ-HR25VF -	MUZ-HR25VF -		
1	-	P.C. BOARD COVER	1	1	1	1	1	1	1	1		[DY02A874G01], [SQ33C889H24] (2 PCS)
2	-	P.C. BOARD SUPPORT	1	1	1	1	1	1	1	1		[DY25A872G03]
3	G2W 022 460	INVERTER P.C. BOARD	1	1	1							Includes heat sink and RT64
3	G2W 026 460	INVERTER P.C. BOARD				1	1	1				Includes heat sink and RT64
3	G2W 036 460	INVERTER P.C. BOARD							1	1		Includes heat sink and RT64
4	-	HEAT SINK HOLDER	1	1	1							[DY25A873G02]
4	-	HEAT SINK HOLDER				1	1	1	1	1		[DY25Y038G01]
5	-	HEAT SINK SUPPORT ASSEMBLY	1	1	1	1	1	1	1	1		[DY00B913G02]
6	G2W 001 359	REACTOR	1	1	1	1	1	1	1	1	L61	
7	G2W 002 365	R.V. COIL	1	1	1	1	1	1	1	1	21S4	AC220-240V
8	G2W 002 353	THERMISTOR SET	1	1	1	1	1	1	1	1	RT61, RT62	DEFROST, DISCHARGE TEMPERATURE
9	G2W 001 357	OUTDOOR HEAT EXCHANGER THERMISTOR	1	1	1	1	1	1	1	1	RT68	
10	G2W 002 355	AMBIENT TEMPERATURE THERMISTOR	1	1	1	1	1	1	1	1	RT65	
11	-	TERMINAL BLOCK SUPPORT	1	1	1	1	1	1	1	1		[DY00B917G04]
12	G2W 001 373	TERMINAL BLOCK	1	1	1						TB1	5 P(S1,S2, S3, L, N)
12	G2W 002 373	TERMINAL BLOCK				1	1	1	1	1	TB1	5 P(S1,S2, S3, L, N)



MUZ-HR25VF - [E2], [ER2], [ET2], [E3], [ER3], [ET3], [E4], [ET4]

1-6. DRAIN SOCKET

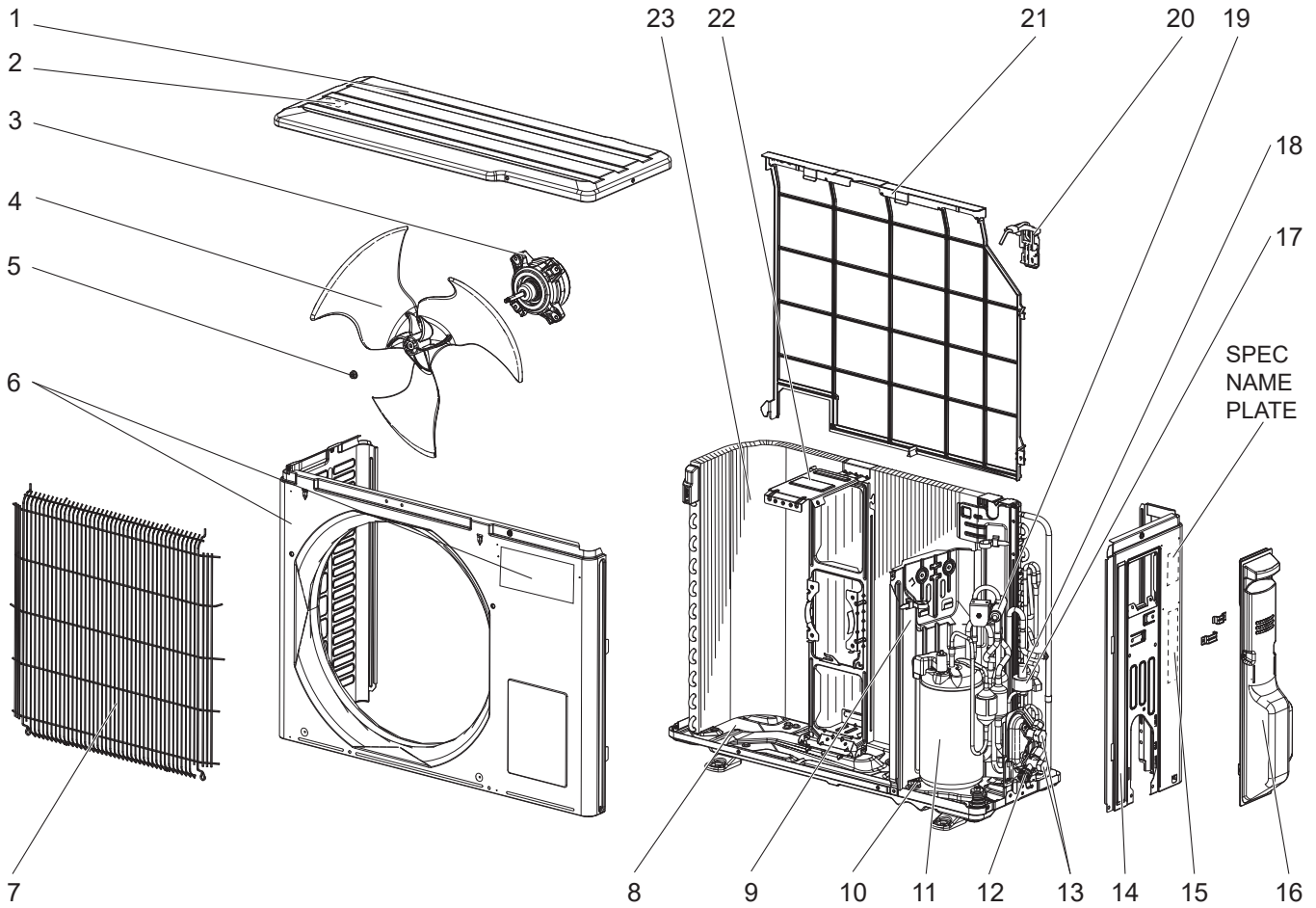


1. The part quantity below indicates the required number of pieces per unit.

No.	Part No.	Part Name	MUZ-HR25VF - [E2]	MUZ-HR25VF - [ER2]	MUZ-HR25VF - [ET2]	MUZ-HR25VF - [E3]	MUZ-HR25VF - [ER3]	MUZ-HR25VF - [ET3]	MUZ-HR25VF - [E4]	MUZ-HR25VF - [ET4]	Symbol in Wiring Diagram	Remarks
1	G2W 001 765	DRAIN SOCKET	1	1	1	1	1	1	1	1		

MUZ-HR35VF - E1, ER1, ET1

1-7. OUTDOOR UNIT STRUCTURAL PARTS AND FUNCTIONAL PARTS



1-7. OUTDOOR UNIT STRUCTURAL PARTS AND FUNCTIONAL PARTS

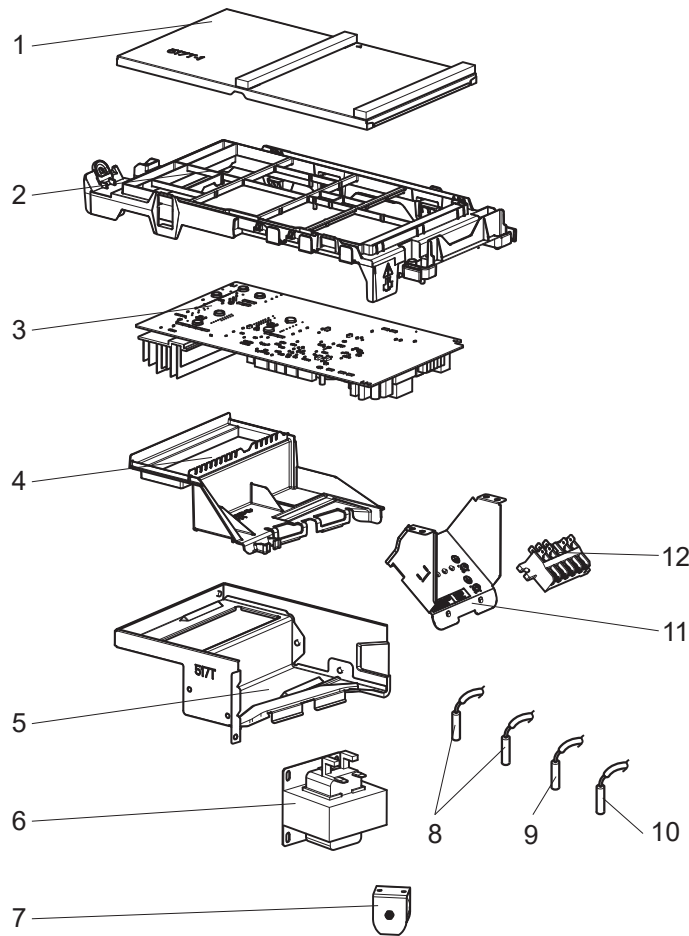
1. The part quantity below indicates the required number of pieces per unit.

2. The circled No. indicates that the part is not shown in the figure.

No.	Part No.	Part Name	MUZ-HR35VF- <input type="checkbox"/> ET1	MUZ-HR35VF- <input type="checkbox"/> ER1	MUZ-HR35VF- <input type="checkbox"/> ET1	Symbol in Wiring Diagram	Remarks [Drawing No.]
1	G2W 003 057	TOP PANEL ASSEMBLY	1	1	1		Not including No. 2 and wiring diagram
2	-	LABEL	1	1	1		[JG79R840H02]
3	G2W 002 350	OUTDOOR FAN MOTOR	1	1	1	MF	RC0J55-□□
4	G2W 001 550	PROPELLER FAN	1	1	1		
5	G2W 001 753	PROPELLER FAN NUT	1	1	1		
6	G2W 010 050	CABINET	1	1	1		Includes brand label
7	G2W 002 063	GRILLE	1	1	1		
8	G2W 003 055	BASE ASSEMBLY	1	1	1		
9	G2W 005 150	SEPARATOR	1	1	1		
10	G2W 001 773	COMPRESSOR RUBBER SET	3	3	3		3 RUBBERS/SET
11	G2W 004 650	COMPRESSOR	1	1	1	MC	KVB073FUXMC
12	-	PORT CAP	1	1	1		[DQ26T763H04]
13	G2W 002 655	STOP VALVE ASSEMBLY	1	1	1		Gas: ø9.52 Liquid: ø6.35 Includes pipes
14	G2W 004 060	BACK PANEL	1	1	1		Not including SPEC NAME PLATE or No. 15
15	-	LABEL	1	1			[DG79T575H01]
15	-	LABEL			1		[DG79T575H02]
16	G2W 002 053	SERVICE PANEL	1	1	1		
17	G2W 002 362	EXPANSION VALVE COIL	1	1	1	LEV	
18	G2W 005 668	EXPANSION VALVE ASSEMBLY	1	1	1		Includes capillary tube (2PCS: ø3.0 × ø2.0 × 260, ø3.0 × ø1.8 × 100)
19	G2W 002 665	4-WAY VALVE	1	1	1		
20	-	THERMO HOLDER (AMBIENT)	1	1	1		[JQ25A222G02]
21	G2W 003 065	CONDENSER WIRE NET	1	1	1		
22	G2W 003 154	MOTOR SUPPORT	1	1	1		
23	G2W 004 660	OUTDOOR HEAT EXCHANGER	1	1	1		
24	G2W 003 371	COMPRESSOR LEAD WIRE ASSEMBLY	1	1	1		

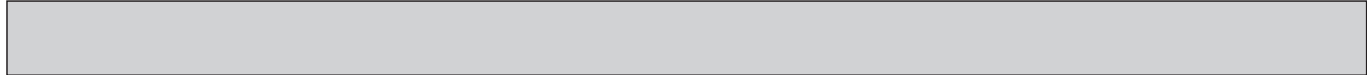
MUZ-HR35VF - [E1], [ER1], [ET1]

1-8. OUTDOOR UNIT ELECTRICAL PARTS



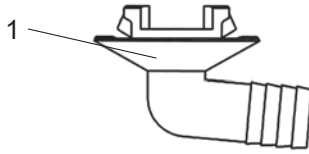
1. The part quantity below indicates the required number of pieces per unit.

No.	Part No.	Part Name				Symbol in Wiring Diagram	Remarks [Drawing No.]
			MUZ-HR35VF - [E1]	MUZ-HR35VF - [ER1]	MUZ-HR35VF - [ET1]		
1	-	P.C. BOARD COVER	1	1	1		[DY02A874G01], [SQ33C889H24] (2 PCS)
2	-	P.C. BOARD SUPPORT	1	1	1		[DY25A872G03]
3	G2W 008 460	INVERTER P.C. BOARD	1	1	1		Includes heat sink and RT64
4	-	HEAT SINK HOLDER	1	1	1		[DY25A873G02]
5	-	HEAT SINK SUPPORT ASSEMBLY	1	1	1		[DY00B913G02]
6	G2W 001 359	REACTOR	1	1	1	L61	
7	G2W 002 365	R.V. COIL	1	1	1	21S4	
8	G2W 002 353	THERMISTOR SET	1	1	1	RT61, RT62	DEFROST, DISCHARGE TEMPERATURE
9	G2W 001 357	OUTDOOR HEAT EXCHANGER THERMISTOR	1	1	1	RT68	
10	G2W 002 355	AMBIENT TEMPERATURE THERMISTOR	1	1	1	RT65	
11	-	TERMINAL BLOCK SUPPORT	1	1	1		[DY00B917G04]
12	G2W 001 373	TERMINAL BLOCK	1	1	1	TB1	5 P(S1,S2, S3, L, N)



MUZ-HR35VF - [E1], [ER1], [ET1]

1-9. DRAIN SOCKET

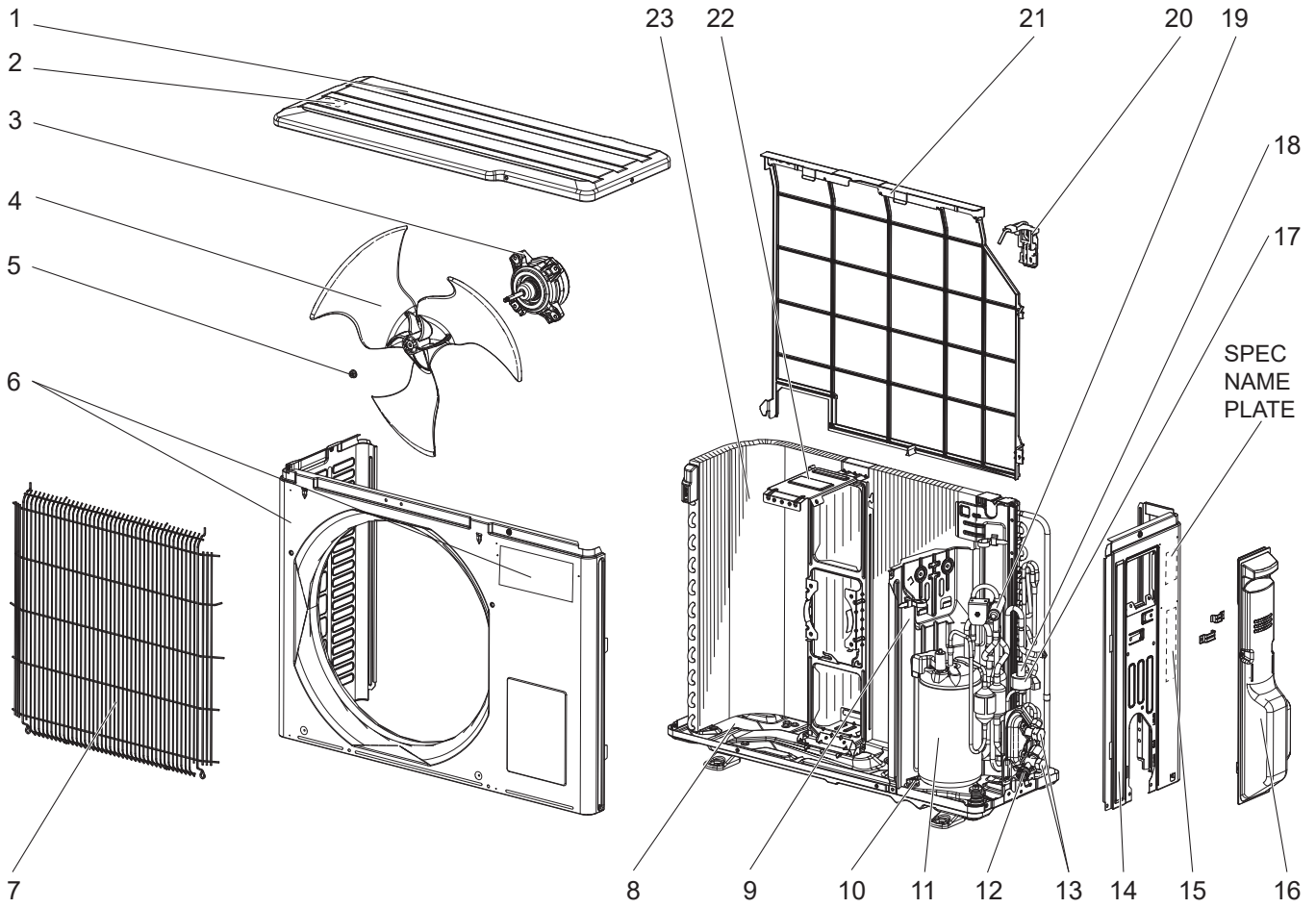


1. The part quantity below indicates the required number of pieces per unit.

No.	Part No.	Part Name	MUZ-HR35VF - [E1]	MUZ-HR35VF - [ER1]	MUZ-HR35VF - [ET1]	Symbol in Wiring Diagram	Remarks
1	G2W 001 765	DRAIN SOCKET	1	1	1		

MUZ-HR35VF - [E2], [ER2], [ET2], [E3], [ER3], [ET3], [E4], [ET4]

1-10. OUTDOOR UNIT STRUCTURAL PARTS AND FUNCTIONAL PARTS



1-10. OUTDOOR UNIT STRUCTURAL PARTS AND FUNCTIONAL PARTS

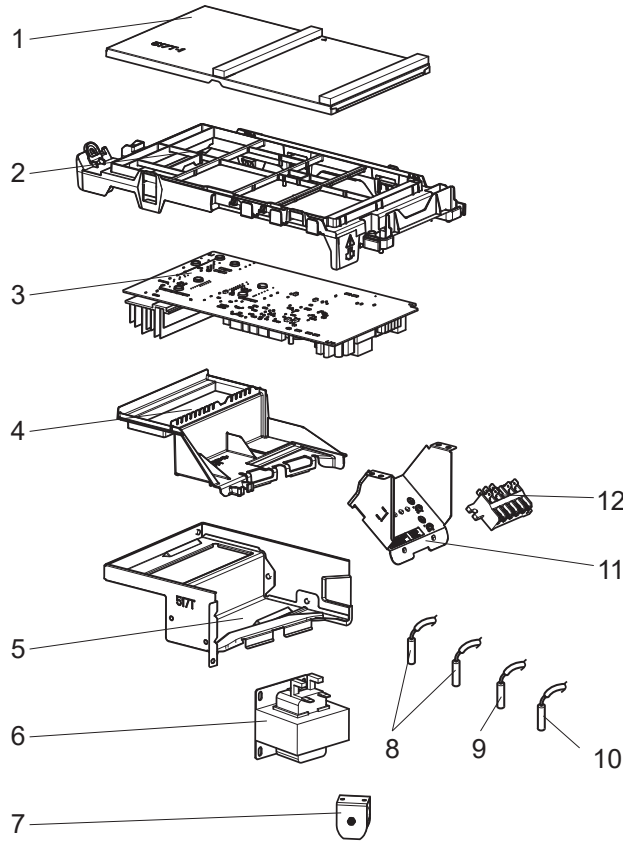
1. The part quantity below indicates the required number of pieces per unit.

2. The circled No. indicates that the part is not shown in the figure.

No.	Part No.	Part Name	MUZ-HR35VF								Symbol in Wiring Diagram	Remarks [Drawing No.]
			-E2	-ER2	-ET2	-E3	-ER3	-ET3	-E4	-ET4		
1	G2W 003 057	TOP PANEL ASSEMBLY	1	1	1	1	1	1	1	1		Not including No. 2 and wiring diagram
2	-	LABEL	1	1	1	1	1	1	1	1		[JG79R840H02]
3	G2W 002 350	OUTDOOR FAN MOTOR	1	1	1					1	MF	RC0J55-□□
3	G2W 003 350	OUTDOOR FAN MOTOR				1	1	1			MF	RC0J37-□□
4	G2W 001 550	PROPELLER FAN	1	1	1	1	1	1	1	1		
5	G2W 001 753	PROPELLER FAN NUT	1	1	1	1	1	1	1	1		
6	G2W 010 050	CABINET	1	1	1	1	1	1	1	1		Includes brand label
7	G2W 002 063	GRILLE	1	1	1	1	1	1	1	1		
8	G2W 003 055	BASE ASSEMBLY	1	1	1	1	1	1	1	1		
9	G2W 005 150	SEPARATOR	1	1	1	1	1	1	1	1		
10	G2W 001 773	COMPRESSOR RUBBER SET	3	3	3	3	3	3	3	3		3 RUBBERS/SET
11	G2W 007 650	COMPRESSOR	1	1	1						MC	KVB073FZGMC
11	G2W 011 650	COMPRESSOR				1	1	1	1	1	MC	KVB073FZTMC
12	-	PORT CAP	1	1	1							[DQ26T763H04]
13	G2W 002 655	STOP VALVE ASSEMBLY	1	1	1	1	1	1	1	1		Gas: ø9.52 Liquid: ø6.35 Includes pipes
14	G2W 004 060	BACK PANEL	1	1	1	1	1	1	1	1		Includes CABLE CLAMP Not including SPEC NAME PLATE or No. 15
15	-	LABEL	1	1		1	1		1			[DG79T575H01]
15	-	LABEL			1			1		1		[DG79T575H02]
16	G2W 002 053	SERVICE PANEL	1	1	1	1	1	1	1	1		
17	G2W 003 362	EXPANSION VALVE COIL	1	1	1	1	1	1	1	1	LEV	
18	G2W 004 668	EXPANSION VALVE ASSEMBLY	1	1	1							Includes capillary tube (2PCS: ø3.0 × ø2.0 × 260, ø3.0 × ø1.8 × 100)
18	G2W 008 668	EXPANSION VALVE ASSEMBLY				1	1	1	1	1		Includes capillary tube (2PCS: ø3.0 × ø2.0 × 260, ø3.0 × ø1.8 × 100)
19	G2W 002 665	4-WAY VALVE	1	1	1	1	1	1	1	1		
20	-	THERMO HOLDER (AMBIENT)	1	1	1	1	1	1	1	1		[JQ25A222G02]
21	G2W 003 065	CONDENSER WIRE NET	1	1	1	1	1	1	1	1		
22	G2W 003 154	MOTOR SUPPORT	1	1	1	1	1	1	1	1		
23	G2W 004 660	OUTDOOR HEAT EXCHANGER	1	1	1	1	1	1	1	1		
②4	G2W 006 371	COMPRESSOR LEAD WIRE ASSEMBLY	1	1	1	1	1	1	1	1		

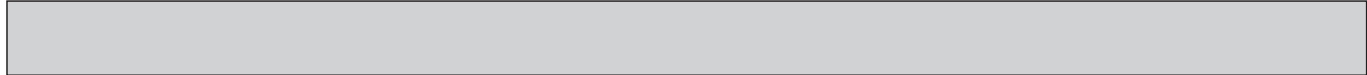
MUZ-HR35VF - [E2], [ER2], [ET2], [E3], [ER3], [ET3], [E4], [ET4]

1-11. OUTDOOR UNIT ELECTRICAL PARTS



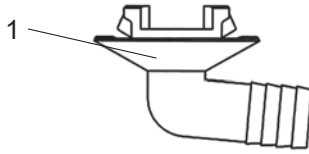
1. The part quantity below indicates the required number of pieces per unit.

No.	Part No.	Part Name	[E2]	[ER2]	[ET2]	[E3]	[ER3]	[ET3]	[E4]	[ET4]	Symbol in Wiring Diagram	Remarks [Drawing No.]
			MUZ-HR35VF -	MUZ-HR35VF -	MUZ-HR35VF -	MUZ-HR35VF -	MUZ-HR35VF -	MUZ-HR35VF -	MUZ-HR35VF -	MUZ-HR35VF -		
1	-	P.C. BOARD COVER	1	1	1	1	1	1	1	1		[DY02A874G01], [SQ33C889H24] (2 PCS)
2	-	P.C. BOARD SUPPORT	1	1	1	1	1	1	1	1		[DY25A872G03]
3	G2W 023 460	INVERTER P.C. BOARD	1	1	1							Includes heat sink and RT64
3	G2W 027 460	INVERTER P.C. BOARD				1	1	1				Includes heat sink and RT64
3	G2W 037 460	INVERTER P.C. BOARD							1	1		Includes heat sink and RT64
4	-	HEAT SINK HOLDER	1	1	1							[DY25A873G02]
4	-	HEAT SINK HOLDER				1	1	1	1	1		[DY25Y038G01]
5	-	HEAT SINK SUPPORT ASSEMBLY	1	1	1	1	1	1	1	1		[DY00B913G02]
6	G2W 001 359	REACTOR	1	1	1	1	1	1	1	1	L61	
7	G2W 002 365	R.V. COIL	1	1	1	1	1	1	1	1	21S4	AC220-240V
8	G2W 002 353	THERMISTOR SET	1	1	1	1	1	1	1	1	RT61, RT62	DEFROST, DISCHARGE TEMPERATURE
9	G2W 001 357	OUTDOOR HEAT EXCHANGER THERMISTOR	1	1	1	1	1	1	1	1	RT68	
10	G2W 002 355	AMBIENT TEMPERATURE THERMISTOR	1	1	1	1	1	1	1	1	RT65	
11	-	TERMINAL BLOCK SUPPORT	1	1	1	1	1	1	1	1		[DY00B917G04]
12	G2W 001 373	TERMINAL BLOCK	1	1	1						TB1	5 P(S1,S2, S3, L, N)
12	G2W 002 373	TERMINAL BLOCK				1	1	1	1	1	TB1	5 P(S1,S2, S3, L, N)



MUZ-HR35VF - [E2], [ER2], [ET2], [E3], [ER3], [ET3], [E4], [ET4]

1-12. DRAIN SOCKET

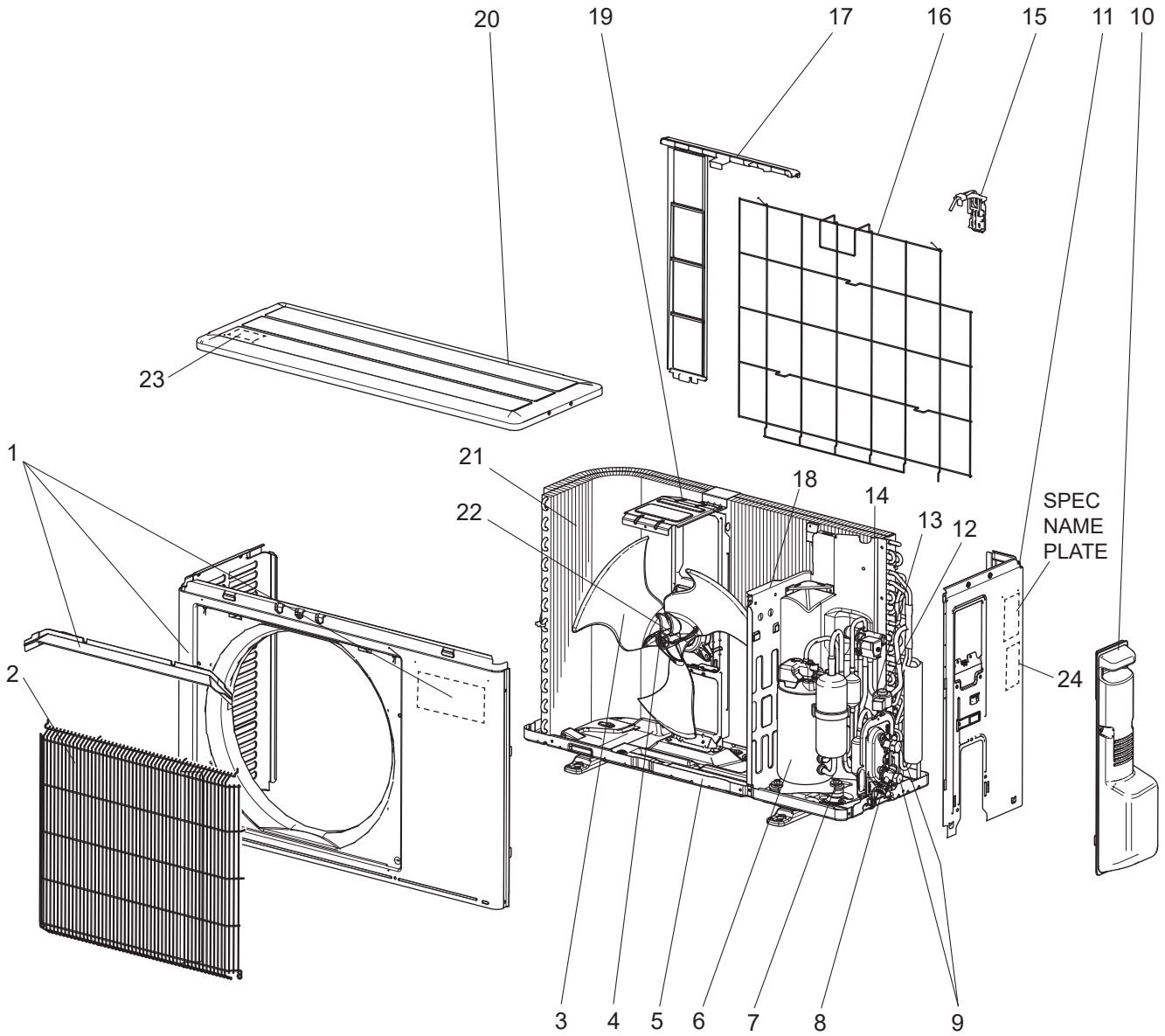


1. The part quantity below indicates the required number of pieces per unit.

No.	Part No.	Part Name	MUZ-HR35VF - [E2]	MUZ-HR35VF - [ER2]	MUZ-HR35VF - [ET2]	MUZ-HR35VF - [E3]	MUZ-HR35VF - [ER3]	MUZ-HR35VF - [ET3]	MUZ-HR35VF - [E4]	MUZ-HR35VF - [ET4]	Symbol in Wiring Diagram	Remarks
1	G2W 001 765	DRAIN SOCKET	1	1	1	1	1	1	1	1		

MUZ-HR42VF - [E1], [ER1], [ET1] MUZ-HR50VF - [E1], [ER1], [ET1]

1-13. OUTDOOR UNIT STRUCTURAL PARTS AND FUNCTIONAL PARTS



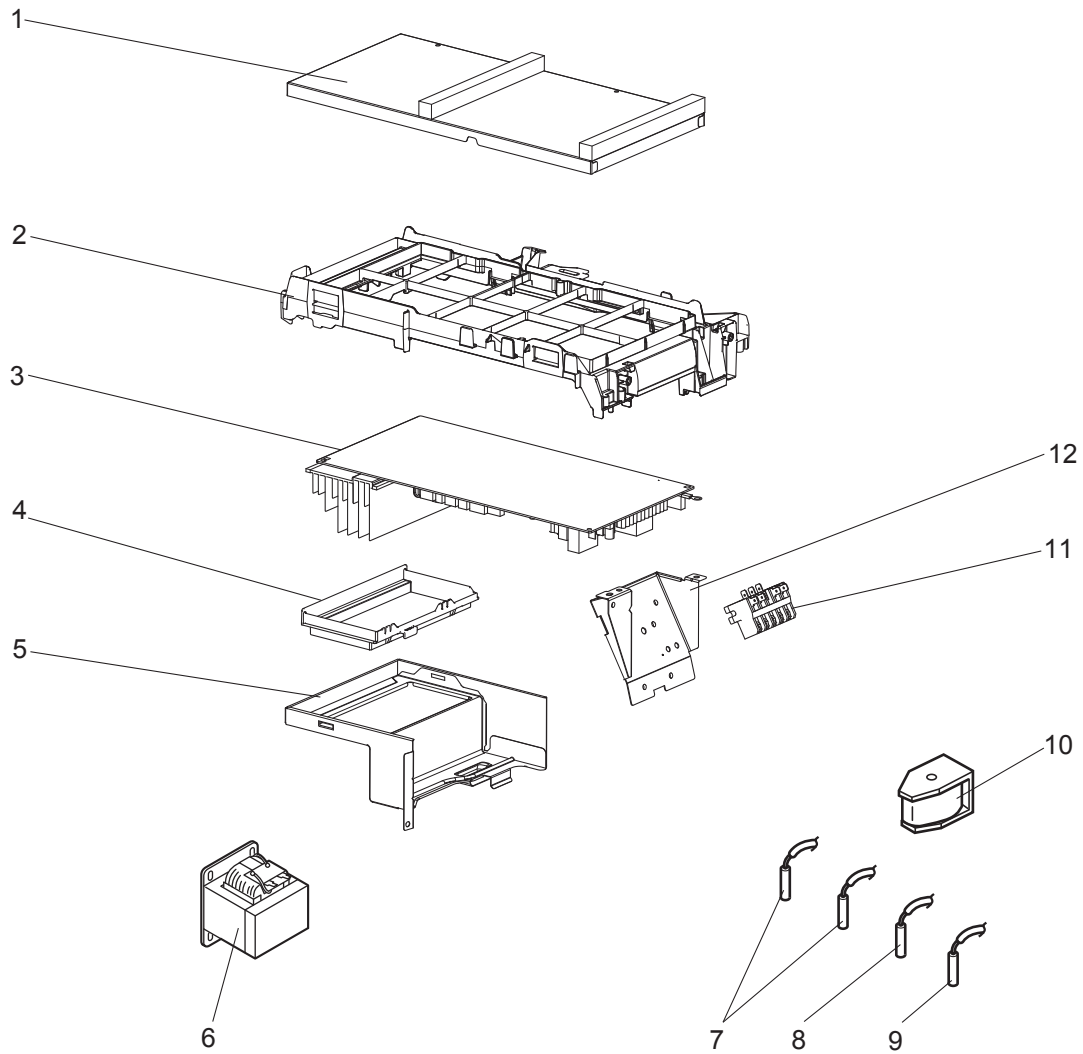
1-13. OUTDOOR UNIT STRUCTURAL PARTS AND FUNCTIONAL PARTS

1. The part quantity below indicates the required number of pieces per unit.

2. The circled No. indicates that the part is not shown in the figure.

No.	Part No.	Part Name	MUZ						Symbol in Wiring Diagram	Remarks [Drawing No.]
			-[E1]	-[ET]	-[ET]	-[E1]	-[ET]	-[ET]		
1	G2W 004 050	CABINET	1	1	1	1	1	1		Includes ice guard and brand label
2	G2W 001 063	WIRE GRILLE	1	1	1	1	1	1		
3	G2W 001 550	PROPELLER FAN	1	1	1	1	1	1		
4	G2W 001 753	PROPELLER FAN NUT	1	1	1	1	1	1		
5	G2W 001 055	BASE ASSEMBLY	1	1	1	1	1	1		
6	G2W 009 650	COMPRESSOR	1	1	1				MC	KVB092FYAMC
6	G2W 010 650	COMPRESSOR				1	1	1	MC	SVB130FBBMC
7	G2W 001 773	COMPRESSOR RUBBER SET	3	3	3					3 RUBBERS/SET
7	G2W 002 773	COMPRESSOR RUBBER SET				3	3	3		3 RUBBERS/SET
8	-	PORT CAP	1	1	1	1	1	1		[DQ26T763H04]
9	G2W 001 655	STOP VALVE ASSEMBLY	1	1	1	1	1	1		Gas: ø9.52 Liquid: ø6.35 Includes pipes
10	G2W 001 053	SERVICE PANEL ASSEMBLY	1	1	1	1	1	1		
11	G2W 003 060	BACK PANEL ASSEMBLY	1	1	1	1	1	1		Not including SPEC NAME PLATE or No. 24
12	G2W 001 668	EXPANSION VALVE ASSEMBLY	1	1	1	1	1	1		Includes capillary tube ø4.0×ø2.4×240
13	G2W 001 362	EXPANSION VALVE COIL	1	1	1	1	1	1	LEV	
14	G2W 001 665	4-WAY VALVE	1	1	1	1	1	1		
15	-	THERMO HOLDER (AMBIENT)	1	1	1	1	1	1		[DK25A972G04]
16	G2W 002 067	CONDENSER WIRE NET ASSEMBLY	1	1	1	1	1	1		
17	G2W 001 065	CONDENSER NET	1	1	1	1	1	1		
18	G2W 003 150	SEPARATOR	1	1	1	1	1	1		
19	G2W 002 154	MOTOR SUPPORT	1	1	1	1	1	1		
20	G2W 001 057	TOP PANEL ASSEMBLY	1	1	1	1	1	1		Not including WIRING DIAGRAM LABEL or No. 23
21	G2W 006 660	OUTDOOR HEAT EXCHANGER	1	1	1	1	1	1		Includes No. 26
22	G2W 002 350	OUTDOOR FAN MOTOR	1	1	1	1	1	1	MF	RC0J55-□□
23	-	LABEL	1	1	1	1	1	1		[JG79R840H02]
24	-	LABEL	1	1		1	1			[DG79T575H01]
24	-	LABEL			1			1		[DG79T575H02]
②⑤	G2W 001 371	COMPRESSOR LEAD WIRE ASSEMBLY	1	1	1					
②⑤	G2W 002 371	COMPRESSOR LEAD WIRE ASSEMBLY				1	1	1		
②⑥	G2W 001 672	CT_PIPE ASSEMBLY	1	1	1	1	1	1		Includes capillary tube ø3.0×ø1.8×600 (×2)
②⑦	G2W 001 765	DRAIN SOCKET	1	1	1	1	1	1		

MUZ-HR42VF - [E1], [ER1], [ET1] MUZ-HR50VF - [E1], [ER1], [ET1]
1-14. OUTDOOR UNIT ELECTRICAL PARTS

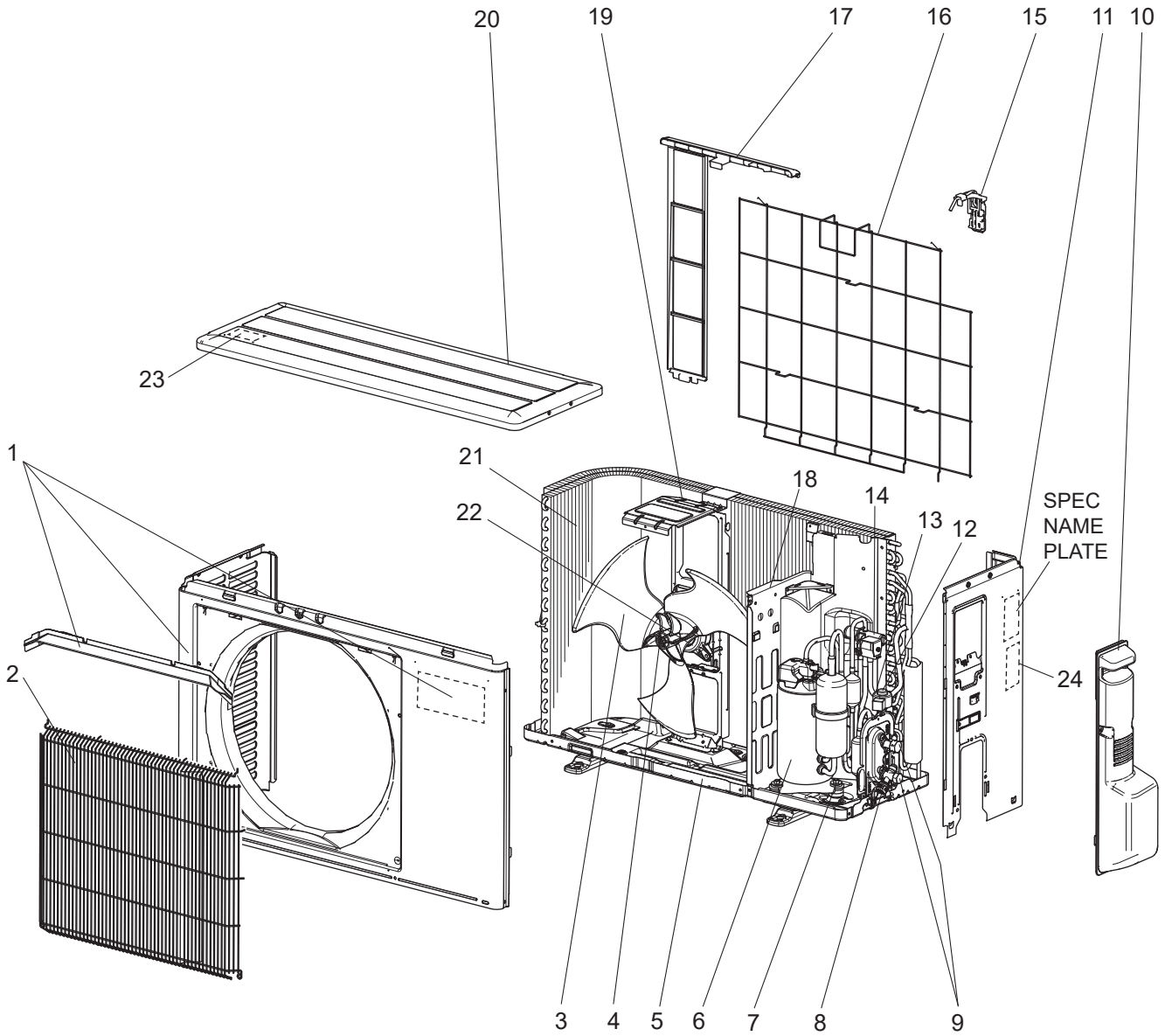


1-14. OUTDOOR UNIT ELECTRICAL PARTS

1. The part quantity below indicates the required number of pieces per unit.

No.	Part No.	Part Name							Symbol in Wiring Diagram	Remarks [Drawing No.]
			MUZ-HR42VF - [ET]	MUZ-HR42VF - [ER1]	MUZ-HR42VF - [ET1]	MUZ-HR50VF - [ET]	MUZ-HR50VF - [ER1]	MUZ-HR50VF - [ET1]		
1	-	P.C. BOARD COVER	1	1	1	1	1	1		[DY02B869G01], [SQ33C889H05] (2 PCS)
2	-	P.C. BOARD SUPPORT	1	1	1	1	1	1		[DY25A804G03]
3	G2W 009 460	INVERTER P.C. BOARD	1	1	1					
3	G2W 010 460	INVERTER P.C. BOARD				1	1	1		
4	-	HEAT SINK HOLDER ASSEMBLY	1	1	1	1	1	1		[DY00C493G04]
5	-	HEAT SINK SUPPORT ASSEMBLY	1	1	1	1	1	1		[DY00B872G04]
6	G2W 002 359	REACTOR	1	1	1	1	1	1	L61	
7	G2W 001 353	THERMISTOR SET	1	1	1	1	1	1	RT61, RT62	DEFROST, DISCHARGE TEMPERATURE
8	G2W 001 355	AMBIENT TEMPERATURE THERMISTOR	1	1	1	1	1	1	RT65	
9	G2W 001 357	OUTDOOR HEAT EXCHANGER TEMPERATURE THERMISTOR	1	1	1	1	1	1	RT68	
10	G2W 001 365	R.V. COIL ASSEMBLY	1	1	1	1	1	1	21S4	
11	G2W 001 373	TERMINAL BLOCK	1	1	1	1	1	1	TB1	5P (S1, S2, S3, L, N)
12	-	TERMINAL BLOCK SUPPORT	1	1	1	1	1	1		[DY00B879G05]

MUZ-HR42VF - [E2], [ER2], [ET2], [E3], [ER3], [ET3], [E4], [ET4] MUZ-HR50VF - [E2], [ER2], [ET2], [E3], [ER3], [ET3], [E4], [ET4]
1-15. OUTDOOR UNIT STRUCTURAL PARTS AND FUNCTIONAL PARTS

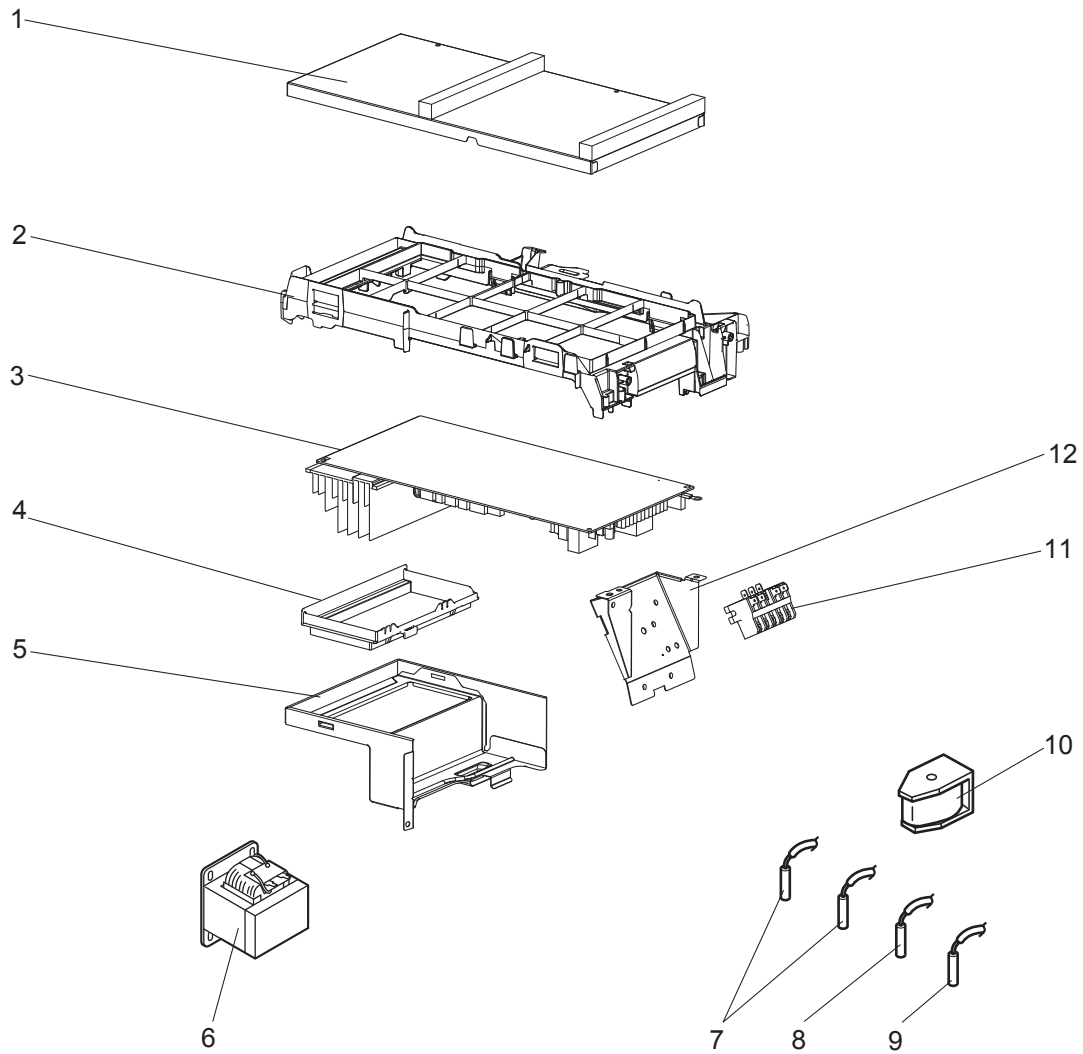


1-15. OUTDOOR UNIT STRUCTURAL PARTS AND FUNCTIONAL PARTS

- The part quantity below indicates the required number of pieces per unit.
- The circled No. indicates that the part is not shown in the figure.

No.	Part No.	Part Name	MUZ-HR42VF - [E2]	MUZ-HR42VF - [ER2]	MUZ-HR42VF - [ET2]	MUZ-HR42VF - [E3]	MUZ-HR42VF - [ER3]	MUZ-HR42VF - [ET3]	MUZ-HR42VF - [E4]	MUZ-HR42VF - [ET4]	MUZ-HR50VF - [E2]	MUZ-HR50VF - [ER2]	MUZ-HR50VF - [ET2]	MUZ-HR50VF - [E3]	MUZ-HR50VF - [ER3]	MUZ-HR50VF - [ET3]	MUZ-HR50VF - [E4]	MUZ-HR50VF - [ET4]	Symbol in Wiring Diagram	Remarks [Drawing No.]
1	G2W 004 050	CABINET	1	1	1	1	1	1	1	1	1	1	1	1	1	1	1	1		Includes ice guard and brand label
2	G2W 001 063	WIRE GRILLE	1	1	1	1	1	1	1	1	1	1	1	1	1	1	1	1		
3	G2W 001 550	PROPELLER FAN	1	1	1	1	1	1	1	1	1	1	1	1	1	1	1	1		
4	G2W 001 753	PROPELLER FAN NUT	1	1	1	1	1	1	1	1	1	1	1	1	1	1	1	1		
5	G2W 001 055	BASE ASSEMBLY	1	1	1	1	1	1	1	1	1	1	1	1	1	1	1	1		
6	G2W 009 650	COMPRESSOR	1	1	1	1	1	1	1	1									MC	KVB092FYAMC
6	G2W 010 650	COMPRESSOR									1	1	1	1	1	1	1	1	MC	SVB130FBBMC
7	G2W 001 773	COMPRESSOR RUBBER SET	3	3	3	3	3	3	3	3										3 RUBBERS/SET
7	G2W 002 773	COMPRESSOR RUBBER SET									3	3	3	3	3	3	3	3		3 RUBBERS/SET
8	-	PORT CAP	1	1	1						1	1	1							[DQ26T763H04]
9	G2W 001655	STOP VALVE ASSEMBLY	1	1	1						1	1	1							Gas: ø9.52, Liquid: ø6.35 Includes pipes
9	G2W 004 655	STOP VALVE ASSEMBLY				1	1	1	1	1				1	1	1	1	1		Gas: ø9.52, Liquid: ø6.35 Includes pipes
10	G2W 001 053	SERVICE PANEL ASSEMBLY	1	1	1	1	1	1	1	1	1	1	1	1	1	1	1	1		
11	G2W 003 060	BACK PANEL ASSEMBLY	1	1	1	1	1	1	1	1	1	1	1	1	1	1	1	1		Includes CABLE CLAMP Not including SPEC NAME PLATE or No. 24
12	G2W 001 668	EXPANSION VALVE ASSEMBLY	1	1	1						1	1	1							Includes capillary tube ø4.0×ø2.4×240
12	G2W 007 668	EXPANSION VALVE ASSEMBLY				1	1	1	1	1				1	1	1	1	1		Includes capillary tube ø4.0×ø2.4×240
13	G2W 001 362	EXPANSION VALVE COIL	1	1	1						1	1	1						LEV	
13	G2W 004 362	EXPANSION VALVE COIL				1	1	1	1	1				1	1	1	1	1	LEV	
14	G2W 002 665	4-WAY VALVE	1	1	1	1	1	1	1	1	1	1	1	1	1	1	1	1		
15	-	THERMO HOLDER (AMBIENT)	1	1	1	1	1	1	1	1	1	1	1	1	1	1	1	1		[DK25A972G04]
16	G2W 002 067	CONDENSER WIRE NET ASSEMBLY	1	1	1	1	1	1	1	1	1	1	1	1	1	1	1	1		
17	G2W 001 065	CONDENSER NET	1	1	1	1	1	1	1	1	1	1	1	1	1	1	1	1		
18	G2W 003 150	SEPARATOR	1	1	1	1	1	1	1	1	1	1	1	1	1	1	1	1		
19	G2W 002 154	MOTOR SUPPORT	1	1	1	1	1	1	1	1	1	1	1	1	1	1	1	1		
20	G2W 001 057	TOP PANEL ASSEMBLY	1	1	1	1	1	1	1	1	1	1	1	1	1	1	1	1		Not including WIRING DIAGRAM LABEL or No. 23
21	G2W 006 660	OUTDOOR HEAT EXCHANGER	1	1	1	1	1	1	1	1	1	1	1	1	1	1	1	1		Includes No. 26
22	G2W 002 350	OUTDOOR FAN MOTOR	1	1	1				1	1	1	1	1				1	1	MF	RC0J55-□□
22	G2W 003 350	OUTDOOR FAN MOTOR				1	1	1						1	1	1			MF	RC0J37-□□
23	-	LABEL	1	1	1	1	1	1	1	1	1	1	1	1	1	1	1	1		[JG79R840H02]
24	-	LABEL	1	1		1	1		1		1	1		1	1		1			[DG79T575H01]
24	-	LABEL			1			1		1			1			1		1		[DG79T575H02]
25	G2W 001 371	COMPRESSOR LEAD WIRE ASSEMBLY	1	1	1	1	1	1	1	1										
25	G2W 002 371	COMPRESSOR LEAD WIRE ASSEMBLY									1	1	1	1	1	1	1	1		
26	G2W 001 672	CT_PIPE ASSEMBLY	1	1	1	1	1	1	1	1	1	1	1	1	1	1	1	1		Includes capillary tube ø3.0×ø1.8×600 (×2)
27	G2W 001 765	DRAIN SOCKET	1	1	1	1	1	1	1	1	1	1	1	1	1	1	1	1		

MUZ-HR42VF - [E2], [ER2], [ET2], [E3], [ER3], [ET3], [E4], [ET4] MUZ-HR50VF - [E2], [ER2], [ET2], [E3], [ER3], [ET3], [E4], [ET4]
1-16. OUTDOOR UNIT ELECTRICAL PARTS



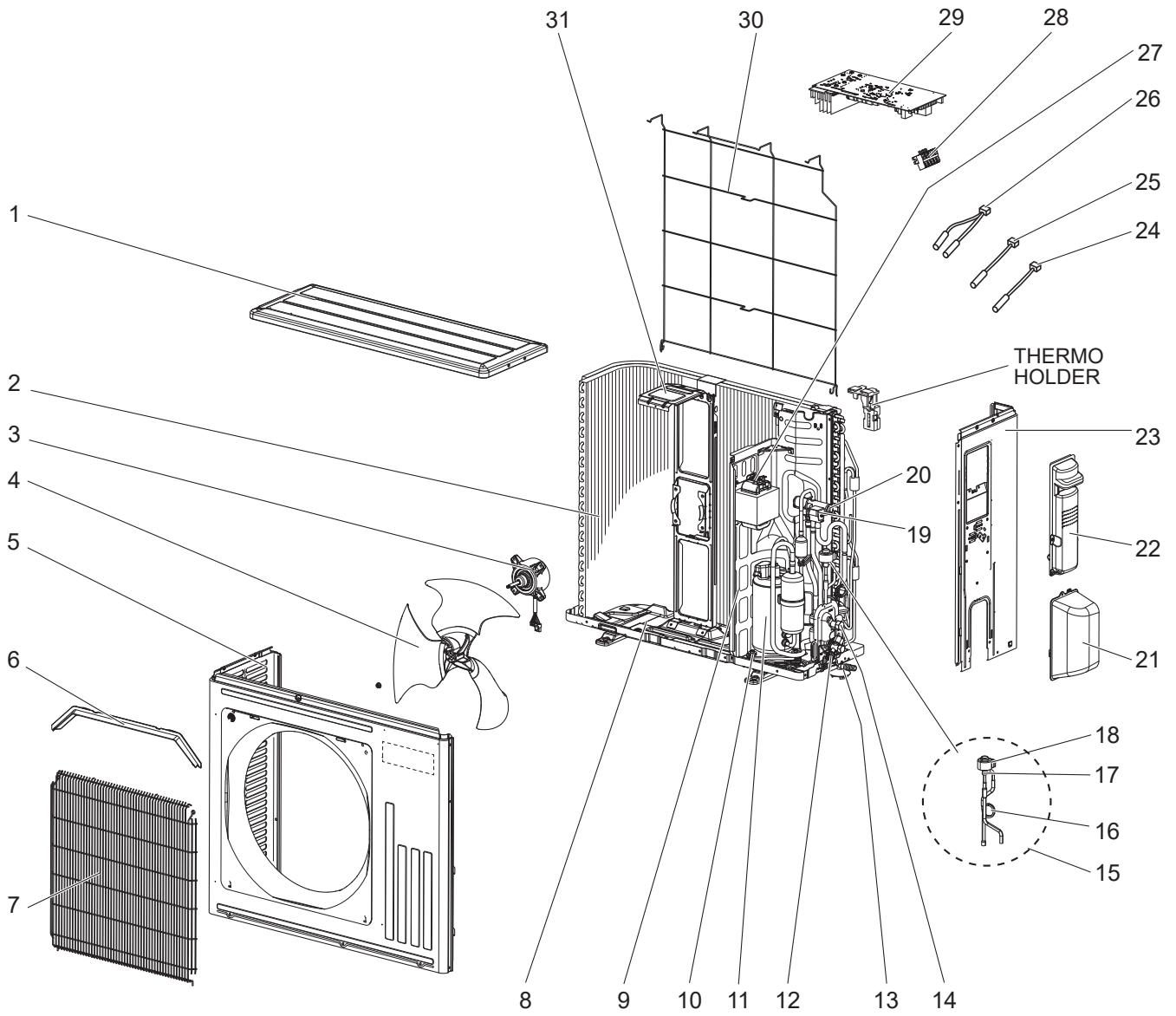
1-16. OUTDOOR UNIT ELECTRICAL PARTS

1. The part quantity below indicates the required number of pieces per unit.

No.	Part No.	Part Name	MUZ-HR42VF - E2	MUZ-HR42VF - ER2	MUZ-HR42VF - ET2	MUZ-HR42VF - E3	MUZ-HR42VF - ER3	MUZ-HR42VF - ET3	MUZ-HR42VF - E4	MUZ-HR42VF - ET4	MUZ-HR50VF - E2	MUZ-HR50VF - ER2	MUZ-HR50VF - ET2	MUZ-HR50VF - E3	MUZ-HR50VF - ER3	MUZ-HR50VF - ET3	MUZ-HR50VF - E4	MUZ-HR50VF - ET4	Symbol in Wiring Diagram	Remarks [Drawing No.]
1	-	P.C. BOARD COVER	1	1	1	1	1	1	1	1	1	1	1	1	1	1	1	1		[DY02B869G01], [SQ33C889H05] (2 PCS)
2	-	P.C. BOARD SUPPORT	1	1	1	1	1	1	1	1	1	1	1	1	1	1	1	1		[DY25A804G03]
3	G2W 024 460	INVERTER P.C. BOARD	1	1	1															Includes heat sink and RT64
3	G2W 025 460	INVERTER P.C. BOARD									1	1	1							Includes heat sink and RT64
3	G2W 028 460	INVERTER P.C. BOARD				1	1	1												Includes heat sink and RT64
3	G2W 038 460	INVERTER P.C. BOARD							1	1										Includes heat sink and RT64
3	G2W 029 460	INVERTER P.C. BOARD												1	1	1				Includes heat sink and RT64
3	G2W 039 460	INVERTER P.C. BOARD															1	1		Includes heat sink and RT64
4	-	HEAT SINK HOLDER ASSEMBLY	1	1	1						1	1	1							[DY00C493G04]
4	-	HEAT SINK HOLDER ASSEMBLY				1	1	1	1	1				1	1	1	1	1		[DY00C493G05]
5	-	HEAT SINK SUPPORT ASSEMBLY	1	1	1	1	1	1	1	1	1	1	1	1	1	1	1	1	1	[DY00B872G04]
6	G2W 002 359	REACTOR	1	1	1	1	1	1	1	1	1	1	1	1	1	1	1	1	L61	
7	G2W 001 353	THERMISTOR SET	1	1	1	1	1	1	1	1	1	1	1	1	1	1	1	1	RT61, RT62	DEFROST, DISCHARGE TEMPERATURE
8	G2W 001 355	AMBIENT TEMPERATURE THERMISTOR	1	1	1	1	1	1	1	1	1	1	1	1	1	1	1	1	RT65	
9	G2W 001 357	OUTDOOR HEAT EXCHANGER TEMPERATURE THERMISTOR	1	1	1	1	1	1	1	1	1	1	1	1	1	1	1	1	RT68	
10	G2W 002 365	R.V. COIL ASSEMBLY	1	1	1	1	1	1	1	1	1	1	1	1	1	1	1	1	21S4	AC200-240V
11	G2W 001 373	TERMINAL BLOCK	1	1	1						1	1	1						TB1	5P (S1, S2, S3, L, N)
11	G2W 002 373	TERMINAL BLOCK				1	1	1	1	1				1	1	1	1	1	TB1	5P (S1, S2, S3, L, N)
12	-	TERMINAL BLOCK SUPPORT	1	1	1	1	1	1	1	1	1	1	1	1	1	1	1	1		[DY00B879G05]

MUZ-HR60VF - [E1], [ER1], [ET1], [E2] MUZ-HR71VF - [E1], [ER1], [ET1], [E2]

1-17. OUTDOOR UNIT STRUCTURAL PARTS, ELECTRICAL PARTS AND FUNCTIONAL PARTS



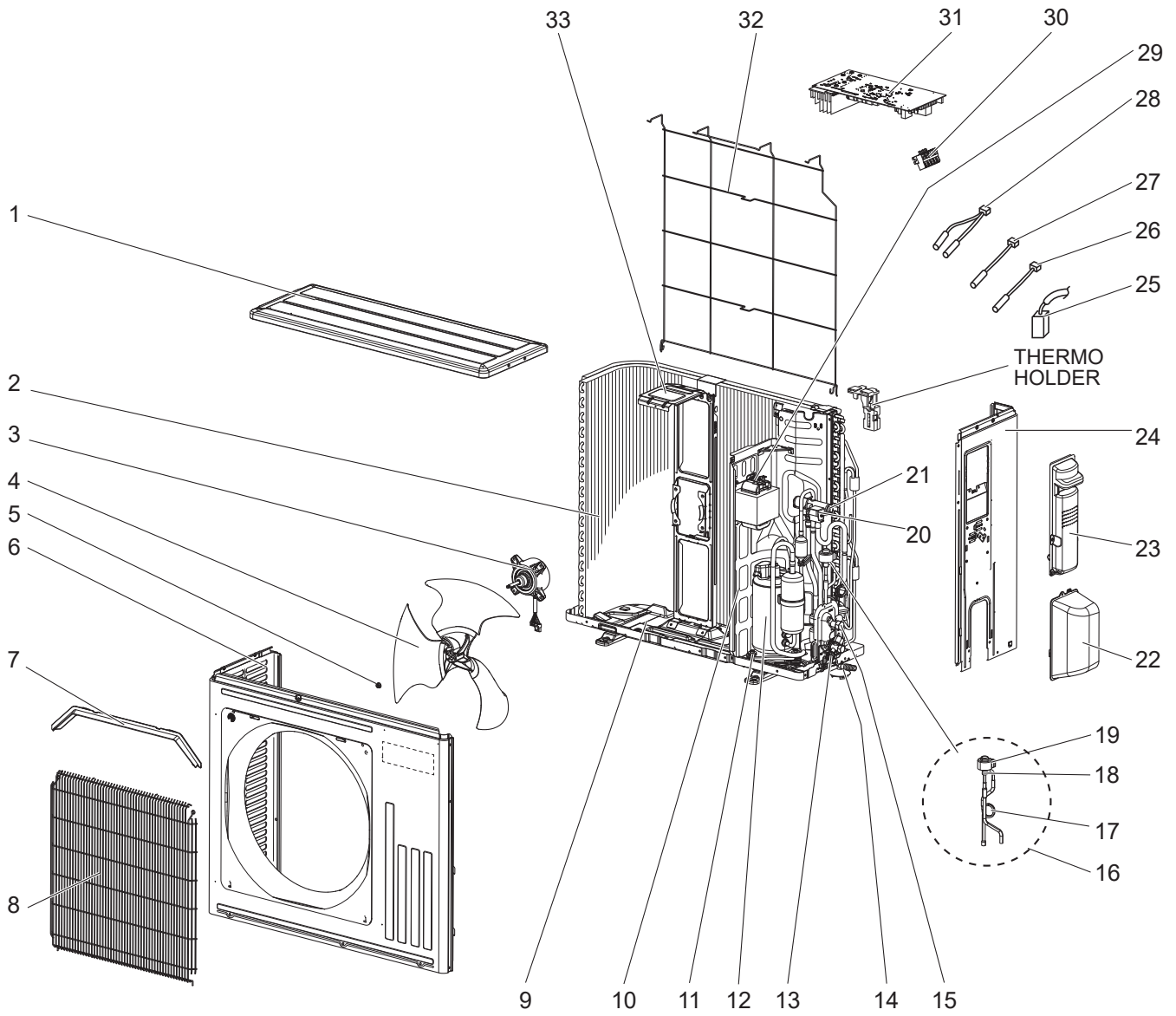
1-17. OUTDOOR UNIT STRUCTURAL PARTS, ELECTRICAL PARTS AND FUNCTIONAL PARTS

1. The part quantity below indicates the required number of pieces per unit.

No.	Part No.	Part Name	MUZ-HR60VF - E1	MUZ-HR60VF - ER1	MUZ-HR60VF - ET1	MUZ-HR60VF - E2	MUZ-HR71VF - E1	MUZ-HR71VF - ER1	MUZ-HR71VF - ET1	MUZ-HR71VF - E2	Symbol in Wiring Diagram	Remarks
1	E22 Y86 297	TOP PANEL	1	1	1	1	1	1	1	1		
2	E22 Y86 630	OUTDOOR HEAT EXCHANGER	1	1	1	1	1	1	1	1		Includes capillary tube ø3.0 × ø2.0 × 210 (×2)
3	E22 Y86 301	OUTDOOR FAN MOTOR	1	1	1	1	1	1	1	1	MF	RC0J50-□□
4	E22 Y86 501	PROPELLER FAN	1	1	1	1	1	1	1	1		
5	E22 Y86 232	CABINET	1	1	1	1	1	1	1	1		
6	E22 Y86 531	ICE GUARD	1	1	1	1	1	1	1	1		
7	E22 Y86 521	GRILLE (OUT)	1	1	1	1	1	1	1	1		
8	E22 Y84 290	BASE	1	1	1	1	1	1	1	1		
9	E22 Y86 293	SEPARATOR	1	1	1	1	1	1	1	1		
10	E22 C34 506	COMPRESSOR RUBBER SET	3	3	3	3	3	3	3	3		3 RUBBERS/SET
11	E22 R83 900	COMPRESSOR	1	1	1	1	1	1	1	1	MC	SVB130FBBMT
12	E22 22A 661	STOP VALVE (GAS)	1	1	1	1	1	1	1	1		ø12.7
13	E22 838 704	DRAIN SOCKET	1	1	1	1	1	1	1	1		
14	E22 Y86 662	STOP VALVE (LIQUID)	1	1	1	1	1	1	1	1		ø6.35
15	E22 41G 645	EXPANSION VALVE ASSEMBLY	1	1	1	1	1	1	1	1		Includes 16, 17 and 18
16	E22 J47 936	CAPILLARY TUBE	1	1	1	1	1	1	1	1		ø4.0 × ø2.4 × 240
17	E22 Y84 640	EXPANSION VALVE	1	1	1	1	1	1	1	1		
18	E22 Y84 493	EXPANSION VALVE COIL	1	1	1	1	1	1	1	1	LEV	
19	E22 Y86 490	R.V. COIL	1	1	1	1	1	1	1	1	21S4	
20	E22 J44 961	4-WAY VALVE	1	1	1	1	1	1	1	1		
21	E22 Y86 650	VALVE COVER	1	1	1	1	1	1	1	1		
22	E22 Y86 245	SERVICE PANEL	1	1	1	1	1	1	1	1		
23	E22 Y86 233	BACK PANEL (OUT)	1	1	1	1	1	1	1	1		
24	E22 Y86 309	AMBIENT TEMPERATURE THERMISTOR	1	1	1	1	1	1	1	1	RT65	
25	E22 C34 307	OUTDOOR HEAT EXCHANGER TEMPERATURE THERMISTOR	1	1	1	1	1	1	1	1	RT68	
26	E22 Y86 306	THERMISTOR SET	1	1	1	1	1	1	1	1	RT61, RT62	DEFROST, DISCHARGE TEMPERATURE
27	E22 N94 337	REACTOR	1	1	1	1	1	1	1	1	L61	
28	E22 T95 374	TERMINAL BLOCK	1	1	1	1	1	1	1	1	TB1	5 P
29	E22 42K 451	INVERTER P.C. BOARD	1	1	1	1						Includes heat sink and RT64
29	E22 43K 451	INVERTER P.C. BOARD					1	1	1	1		Includes heat sink and RT64
30	E22 Y86 525	CONDENSER WIRE NET	1	1	1	1	1	1	1	1		
31	E22 Y86 515	MOTOR SUPPORT	1	1	1	1	1	1	1	1		

MUZ-HR60VF - [ER2, ET2, E3] MUZ-HR71VF - [ER2, ET2, E3]

1-18. OUTDOOR UNIT STRUCTURAL PARTS, ELECTRICAL PARTS AND FUNCTIONAL PARTS



1-18. OUTDOOR UNIT STRUCTURAL PARTS, ELECTRICAL PARTS AND FUNCTIONAL PARTS

1. The part quantity below indicates the required number of pieces per unit.

No.	Part No.	Part Name	MUZ-HR60VF - ER2	MUZ-HR60VF - ET2	MUZ-HR60VF - E3	MUZ-HR71VF - ER2	MUZ-HR71VF - ET2	MUZ-HR71VF - E3	Symbol in Wiring Diagram	Remarks
1	E22 Y86 297	TOP PANEL	1	1	1	1	1	1		
2	E22 Y86 630	OUTDOOR HEAT EXCHANGER	1	1	1	1	1	1		Includes capillary tube ø3.0 × ø2.0 × 210 (×2)
3	E22 Y86 301	OUTDOOR FAN MOTOR	1	1	1	1	1	1	MF	RC0J50-□□
4	E22 Y86 501	PROPELLER FAN	1	1	1	1	1	1		
5	E27 L05 508	PROPELLER FAN NUT	1			1				
6	E22 41G 232	CABINET	1			1				
6	E22 Y86 232	CABINET		1	1		1	1		
7	E22 Y86 531	ICE GUARD	1	1	1	1	1	1		
8	E22 Y86 521	GRILLE (OUT)	1	1	1	1	1	1		
9	E22 44P 290	BASE	1	1	1	1	1	1		
10	E22 Y86 293	SEPARATOR	1	1	1	1	1	1		
11	E22 C34 506	COMPRESSOR RUBBER SET	3	3	3	3	3	3		3 RUBBERS/SET
12	E22 R83 900	COMPRESSOR	1	1	1	1	1	1	MC	SVB130FBBMT
13	E22 46P 661	STOP VALVE (GAS)	1	1	1	1	1	1		ø12.7
14	E22 838 704	DRAIN SOCKET	1	1	1	1	1	1		
15	E22 75R 662	STOP VALVE (LIQUID)	1	1	1	1	1	1		ø6.35
16	E22 75R 645	EXPANSION VALVE ASSEMBLY	1	1	1	1	1	1		Includes LEV body, capillary tube
17	E22 J47 936	CAPILLARY TUBE		1	1		1	1		ø4.0 × ø2.4 × 240
18	E22 11L 640	EXPANSION VALVE		1	1		1	1		
19	E22 29K 493	EXPANSION VALVE COIL	1	1	1	1	1	1	LEV	
20	E22 75R 490	R.V. COIL	1	1	1	1	1	1	21S4	
21	E22 75R 961	4-WAY VALVE	1	1	1	1	1	1		
22	E22 Y86 650	VALVE COVER	1	1	1	1	1	1		
23	E22 Y86 245	SERVICE PANEL	1	1	1	1	1	1		
24	E22 Y86 233	BACK PANEL (OUT)	1	1	1	1	1	1		
25	E22 16N 381	COMPRESSOR PROTECTOR	1	1	1	1	1	1	26C	
26	E22 Y86 309	AMBIENT TEMPERATURE THERMISTOR	1	1	1	1	1	1	RT65	
27	E22 C34 307	OUTDOOR HEAT EXCHANGER TEMPERATURE THERMISTOR	1	1	1	1	1	1	RT68	
28	E22 Y86 306	THERMISTOR SET	1	1	1	1	1	1	RT61, RT62	DEFROST, DISCHARGE TEMPERATURE
29	E22 N94 337	REACTOR	1	1	1	1	1	1	L61	
30	E22 13L 374	TERMINAL BLOCK	1	1	1	1	1	1	TB1	5 P
31	E22 19V 451	INVERTER P.C. BOARD	1	1	1					Includes heat sink and RT64
31	E22 20V 451	INVERTER P.C. BOARD				1	1	1		Includes heat sink and RT64
32	E22 Y86 525	CONDENSER WIRE NET	1	1	1	1	1	1		
33	E22 Y86 515	MOTOR SUPPORT	1	1	1	1	1	1		

MITSUBISHI ELECTRIC CORPORATION

HEAD OFFICE: TOKYO BUILDING, 2-7-3, MARUNOUCHI, CHIYODA-KU, TOKYO 100-8310, JAPAN

© Copyright 2018 MITSUBISHI ELECTRIC CORPORATION

Issued: Aug. 2024. No. OBB823 REVISED EDITION-K

Issued: Sep. 2023. No. OBB823 REVISED EDITION-J

Issued: Aug. 2022. No. OBB823 REVISED EDITION-H

Issued: Dec. 2021. No. OBB823 REVISED EDITION-G

Issued: Oct. 2021. No. OBB823 REVISED EDITION-F

Issued: Jan. 2021. No. OBB823 REVISED EDITION-E

Issued: Aug. 2020. No. OBB823 REVISED EDITION-D

Issued: Feb. 2020. No. OBB823 REVISED EDITION-C

Issued: Jan. 2020. No. OBB823 REVISED EDITION-B

Issued: Apr. 2019. No. OBB823 REVISED EDITION-A

Published: Oct. 2018. No. OBB823

Made in Japan

Specifications are subject to change without notice.