

SPLIT-TYPE AIR CONDITIONERS

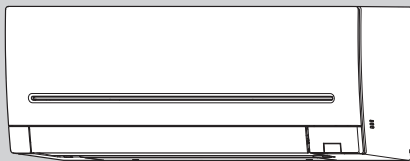
Revision E:
 • MSZ-AP25/35/42/50VG- E6, E7,
 MSZ-AP25/35/42/50VG- E7,
 MSZ-AP25/35/42/50VGK- E6,
 MSZ-AP25/35/42/50VGK- E7 and
 MSZ-AP25/35/42/50VGK- E8 have
 been changed.
 OBB791 REVISED EDITION-D is void.

INDOOR UNIT PARTS CATALOG

**No. OBB791
REVISED EDITION-E**

Models

- MSZ-AP25VG - E6, E7
- MSZ-AP35VG - E6, E7
- MSZ-AP42VG - E6, E7
- MSZ-AP50VG - E6, E7
- MSZ-AP25VGK - E6, E7, E8
- MSZ-AP35VGK - E6, E7, E8
- MSZ-AP42VGK - E6, E7, E8
- MSZ-AP50VGK - E6, E7, E8



CONTENTS

- 1. SERVICE PARTS LIST 2
- 2. OPTIONAL PARTS 11

SERVICE MANUAL (OBH791)

Revision A:

• Some descriptions have been modified.

Revision B:

• MSZ-AP25/35/42/50VG- **E7** and MSZ-AP25/35/42/50VGK- **E7** have been added.

Revision C:

• MSZ-AP25/35/42/50VGK- **E8** have been added.

Revision D:

• Parts numbers of the electronic control P.C. board for MSZ-AP25/35VGK- **E8** have been changed.

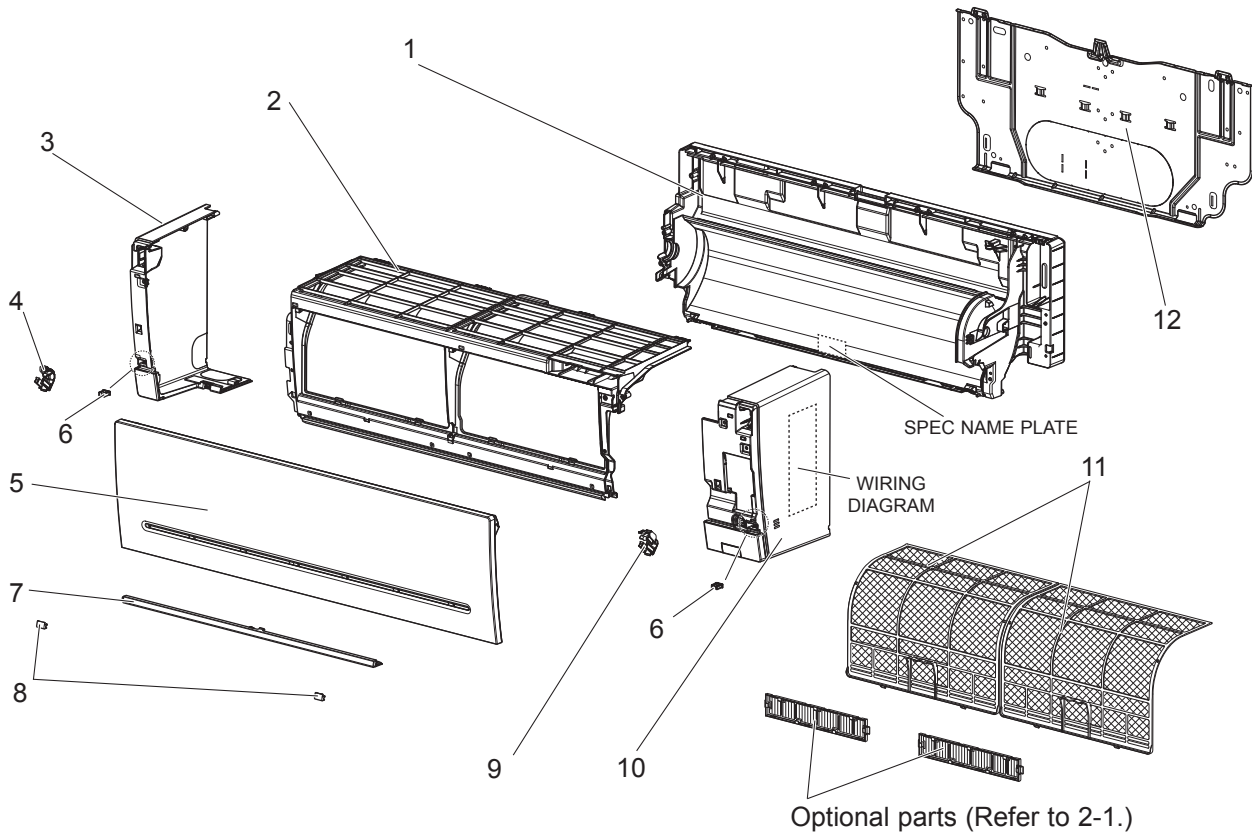
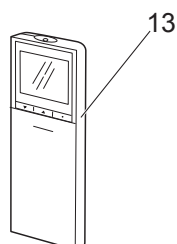
Revision E:

• MSZ-AP25/35/42/50VG- **E6**, MSZ-AP25/35/42/50VG- **E7**, MSZ-AP25/35/42/50VGK- **E6**, MSZ-AP25/35/42/50VGK- **E7** and MSZ-AP25/35/42/50VGK- **E8** have been changed.

1**SERVICE PARTS LIST**

MSZ-AP25VG- **E6** , **E7** MSZ-AP35VG- **E6** , **E7**

MSZ-AP42VG- **E6** , **E7** MSZ-AP50VG- **E6** , **E7**

1-1. INDOOR UNIT STRUCTURAL PARTS**1-2. ACCESSORY AND REMOTE CONTROLLER**

1-1. INDOOR UNIT STRUCTURAL PARTS

1. The part quantity below indicates the required number of pieces per unit.

No.	Part No.	Part name	MSZ-AP25VG - [E6]	MSZ-AP25VG - [E7]	MSZ-AP35VG - [E6]	MSZ-AP35VG - [E7]	MSZ-AP42VG - [E6]	MSZ-AP42VG - [E7]	MSZ-AP50VG - [E6]	MSZ-AP50VG - [E7]	Symbol in Wiring Diagram	Remarks
1	T2W EC4 234	BOX ASSEMBLY	1	1	1	1	1	1	1	1		Not including SPEC NAME PLATE
2	T2W EAS 002	PANEL (FRONT) ASSEMBLY	1	1	1	1	1	1	1	1		
3	T2W EAR 057	PANEL (LEFT) ASSEMBLY	1	1	1	1	1	1	1	1		Includes No. 4,6
4	T2W EAK 039	ARM HOLDER (LEFT)	1	1	1	1	1	1	1	1		
5	T2W ECK 010	FRONT PANEL	1	1	1	1	1	1	1	1		
6	T2W EA3 008	CATCH	2	2	2	2	2	2	2	2		
7	T2W EA6 003	PANEL (UNDER) ASSEMBLY	1	1	1	1	1	1	1	1		
8	T2W EAN 067	SCREW CAP	2	2	2	2	2	2	2	2		
9	T2W EAL 039	ARM HOLDER (RIGHT)	1	1	1	1	1	1	1	1		
10	T2W EAP 006	PANEL (RIGHT) ASSEMBLY	1	1	1	1	1	1	1	1		Includes No. 6,9 Not including WIRING DIAGRAM
11	T2W EBD 100	AIR FILTER	2	2	2	2	2	2	2	2		1 PC/SET
12	T2W EA7 970	INSTALLATION PLATE	1	1	1	1	1	1	1	1		

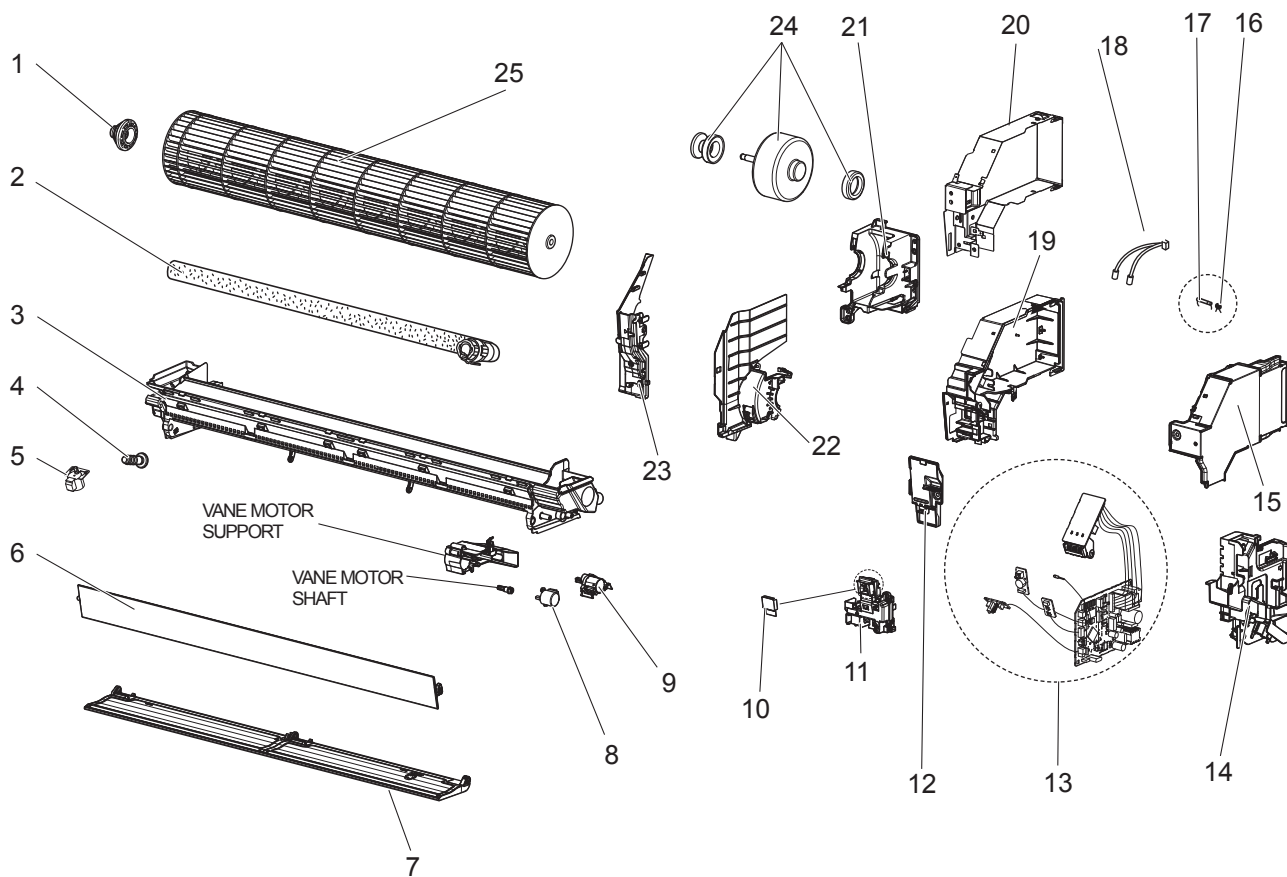
1-2. ACCESSORY AND REMOTE CONTROLLER

1. The part quantity below indicates the required number of pieces per unit.

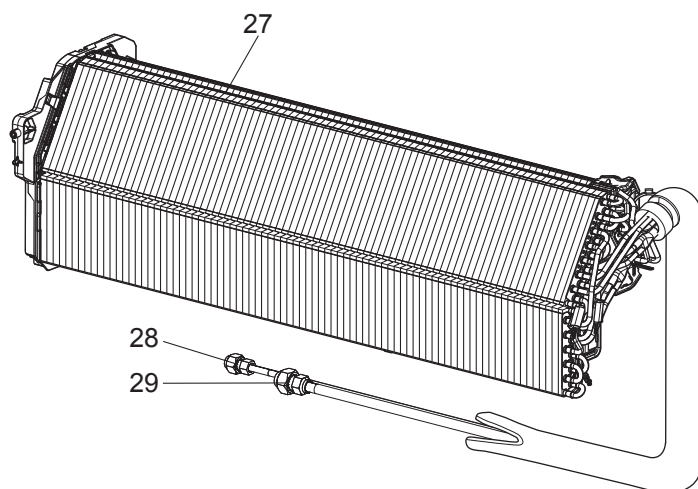
No.	Part No.	Part name	MSZ-AP25VG - [E6]	MSZ-AP25VG - [E7]	MSZ-AP35VG - [E6]	MSZ-AP35VG - [E7]	MSZ-AP42VG - [E6]	MSZ-AP42VG - [E7]	MSZ-AP50VG - [E6]	MSZ-AP50VG - [E7]	Symbol in Wiring Diagram	Remarks
13	G2W 001 400	REMOTE CONTROLLER	1		1		1		1			SG17B
13	G2W 005 400	REMOTE CONTROLLER		1		1		1		1		SH20A

MSZ-AP25VG- E6 , E7 MSZ-AP35VG- E6 , E7
 MSZ-AP42VG- E6 , E7 MSZ-AP50VG- E6 , E7

1-3. INDOOR UNIT ELECTRICAL PARTS AND FUNCTIONAL PARTS



1-4. INDOOR UNIT HEAT EXCHANGER



1-3. INDOOR UNIT ELECTRICAL PARTS AND FUNCTIONAL PARTS

1. The part quantity below indicates the required number of pieces per unit.
2. The circled No. indicates that the part is not shown in the figure.

No.	Part No.	Part name	MSZ-AP25VG - E6	MSZ-AP25VG - E7	MSZ-AP35VG - E6	MSZ-AP35VG - E7	MSZ-AP42VG - E6	MSZ-AP42VG - E7	MSZ-AP50VG - E6	MSZ-AP50VG - E7	Symbol in Wiring Diagram	Remarks [Drawing No.]
1	T2W EA2 509	BEARING MOUNT ASSEMBLY	1	1	1	1	1	1	1	1		Includes sleeve bearing
2	T2W EAC 703	DRAIN HOSE ASSEMBLY (SHORT)	1	1	1	1	1	1	1	1		520 mm
3	T2W EBC 235	NOZZLE ASSEMBLY	1	1	1	1	1	1	1	1		
4	T2W EA1 707	DRAIN CAP	1	1	1	1	1	1	1	1		
5	G2W 001 320	VANE MOTOR (VERTICAL)	1	1	1	1	1	1	1	1	MV3	RIGHT & LEFT
6	T2W ECM 041	HORIZONTAL VANE (UPPER) ASSEMBLY	1	1	1	1	1	1	1	1		Includes shaft
7	T2W ECN 041	HORIZONTAL VANE (LOWER) ASSEMBLY	1	1	1	1	1	1	1	1		Includes shaft
8	G2W 001 315	VANE MOTOR (HORIZONTAL) (UPPER)	1	1	1	1	1	1	1	1	MV1	UP & DOWN
9	G2W 002 315	VANE MOTOR (HORIZONTAL) (LOWER)	1	1	1	1	1	1	1	1	MV2	UP & DOWN
10	—	SWITCH SHEET	1	1	1	1	1	1	1	1		[DY79D306H01]
11	—	DISPLAY AND RECEIVER P.C. BOARD HOLDER ASSEMBLY	1	1	1	1	1	1	1	1		[DY25A832G02]
12	—	V.A. CLAMP ASSEMBLY	1	1	1	1	1	1	1	1		[DK00G227G01]
13	T2W F3A 450	ELECTRONIC CONTROL P.C. BOARD	1									Includes RECEIVER P.C. BOARD, DISPLAY P.C. BOARD, SWITCH/BUZZER P.C. BOARD, TERMINAL P.C. BOARD and ROOM TEMPERATURE THERMISTOR (RT11)
13	T2W F90 450	ELECTRONIC CONTROL P.C. BOARD		1								
13	T2W F3C 450	ELECTRONIC CONTROL P.C. BOARD			1							
13	T2W F91 450	ELECTRONIC CONTROL P.C. BOARD				1						
13	T2W F3D 450	ELECTRONIC CONTROL P.C. BOARD					1					
13	T2W F92 450	ELECTRONIC CONTROL P.C. BOARD						1				
13	T2W F3E 450	ELECTRONIC CONTROL P.C. BOARD							1			
13	T2W F93 450	ELECTRONIC CONTROL P.C. BOARD								1		
14	—	CABLE GUIDE	1	1	1	1	1	1	1	1		[DY25A831G01]
15	—	PB-COVER (RIGHT)	1	1	1	1	1	1	1	1		[DK00G228G01]
16	G2W 001 425	VARISTOR	1	1	1	1	1	1	1	1	NR11	
17	T2W EA0 382	FUSE	1	1	1	1	1	1	1	1	F11	T3.15AL250V
18	G2W 001 310	INDOOR COIL THERMISTOR	1	1	1	1					RT12, RT13	
18	G2W 002 310	INDOOR COIL THERMISTOR					1	1	1	1	RT12, RT13	
19	—	PB-COVER (LEFT)	1	1	1	1	1	1	1	1		[DY00A833G01]
20	—	PB-BOX(LEFT)	1	1	1	1	1	1	1	1		[DY25A830G01]
21	—	MOTOR BED	1	1	1	1	1	1	1	1		[SQ00C974G01]
22	T2W EAE 023	MOTOR BAND	1	1	1	1	1	1	1	1		
23	—	WATER COVER	1	1	1	1	1	1	1	1		[SQ25Y849G01]
24	G2W 001 300	INDOOR FAN MOTOR	1	1	1	1	1	1	1	1	MF	RC0J30□□, Includes FAN MOTOR RUBBER MOUNT (2 PCS/SET)
25	T2W EB9 302	LINE FLOW FAN	1	1	1	1	1	1	1	1		
②6	—	LEAD WIRE	1	1	1	1	1	1	1	1		[SM00C948G02], Between CN151 on ELECTRONIC CONTROL P.C. BOARD and VANE MOTOR

1-4. INDOOR UNIT HEAT EXCHANGER

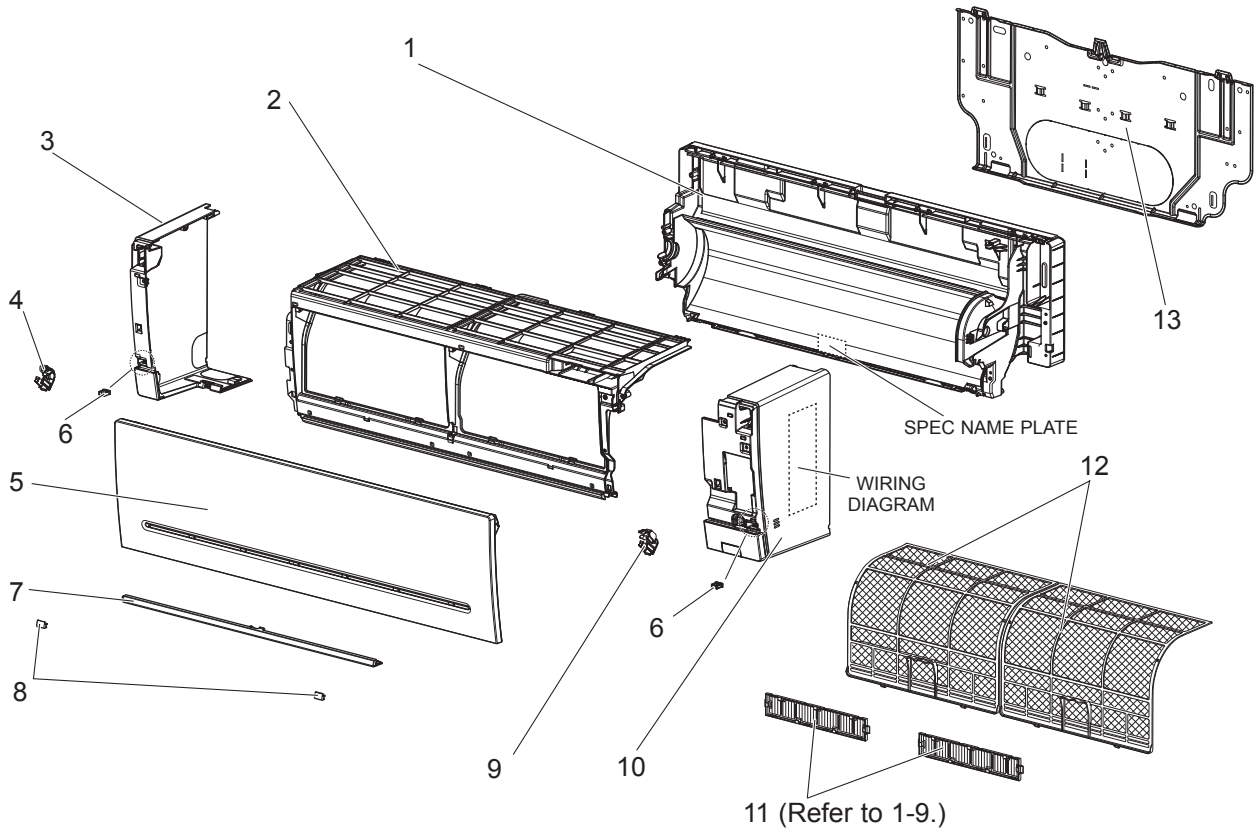
1. The part quantity below indicates the required number of pieces per unit.

No.	Part No.	Part name	MSZ-AP25VG - E6	MSZ-AP25VG - E7	MSZ-AP35VG - E6	MSZ-AP35VG - E7	MSZ-AP42VG - E6	MSZ-AP42VG - E7	MSZ-AP50VG - E6	MSZ-AP50VG - E7	Symbol in Wiring Diagram	Remarks
27	T2W EHY 620	INDOOR HEAT EXCHANGER	1	1	1	1						Includes No. 28, 29
27	T2W EJ0 620	INDOOR HEAT EXCHANGER					1	1	1	1		Includes No. 28, 29
28	G2W 001 605	UNION (LIQUID)	1	1	1	1	1	1	1	1		ø6.35
29	G2W 002 605	UNION (GAS)	1	1	1	1	1	1	1	1		ø9.52

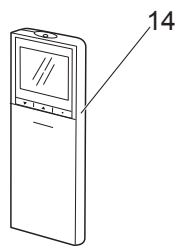
MSZ-AP25VGK- E6 , E7 , E8
MSZ-AP42VGK- E6 , E7 , E8

MSZ-AP35VGK- E6 , E7 , E8
MSZ-AP50VGK- E6 , E7 , E8

1-5. INDOOR UNIT STRUCTURAL PARTS



1-6. ACCESSORY AND REMOTE CONTROLLER



1-5. INDOOR UNIT STRUCTURAL PARTS

1. The part quantity below indicates the required number of pieces per unit.

No.	Part No.	Part name	MSZ-AP25VGK - E6	MSZ-AP25VGK - E7	MSZ-AP25VGK - E8	MSZ-AP35VGK - E6	MSZ-AP35VGK - E7	MSZ-AP35VGK - E8	MSZ-AP42VGK - E6	MSZ-AP42VGK - E7	MSZ-AP42VGK - E8	MSZ-AP50VGK - E6	MSZ-AP50VGK - E7	MSZ-AP50VGK - E8	Symbol in Wiring Diagram	Remarks
1	T2W EC4 234	BOX ASSEMBLY	1	1	1	1	1	1	1	1	1	1	1	1		Not includes SPEC NAME PLATE
2	T2W EAS 002	PANEL (FRONT) ASSEMBLY	1	1	1	1	1	1	1	1	1	1	1	1		
3	T2W EAR 057	PANEL (LEFT) ASSEMBLY	1	1	1	1	1	1	1	1	1	1	1	1		Includes No. 4,6
4	T2W EAK 039	ARM HOLDER (LEFT)	1	1	1	1	1	1	1	1	1	1	1	1		
5	T2W ECK 010	FRONT PANEL	1	1	1	1	1	1	1	1	1	1	1	1		
6	T2W EA3 008	CATCH	2	2	2	2	2	2	2	2	2	2	2	2		
7	T2W EA6 003	PANEL (UNDER) ASSEMBLY	1	1	1	1	1	1	1	1	1	1	1	1		
8	T2W EAN 067	SCREW CAP	2	2	2	2	2	2	2	2	2	2	2	2		
9	T2W EAL 039	ARM HOLDER (RIGHT)	1	1	1	1	1	1	1	1	1	1	1	1		
10	T2W EAP 006	PANEL (RIGHT) ASSEMBLY	1	1	1	1	1	1	1	1	1	1	1	1		Includes No. 6,9 Not including WIRING DIAGRAM
11	-	AIR CLEANING FILTER (V BLOCKING FILTER)			2			2			2			2		2 PCS/SET MAC2470FT-E
12	T2W EBD 100	AIR FILTER	2	2	2	2	2	2	2	2	2	2	2	2		1 PC/SET
13	T2W EA7 970	INSTALLATION PLATE	1	1	1	1	1	1	1	1	1	1	1	1		

1-6. ACCESSORY AND REMOTE CONTROLLER

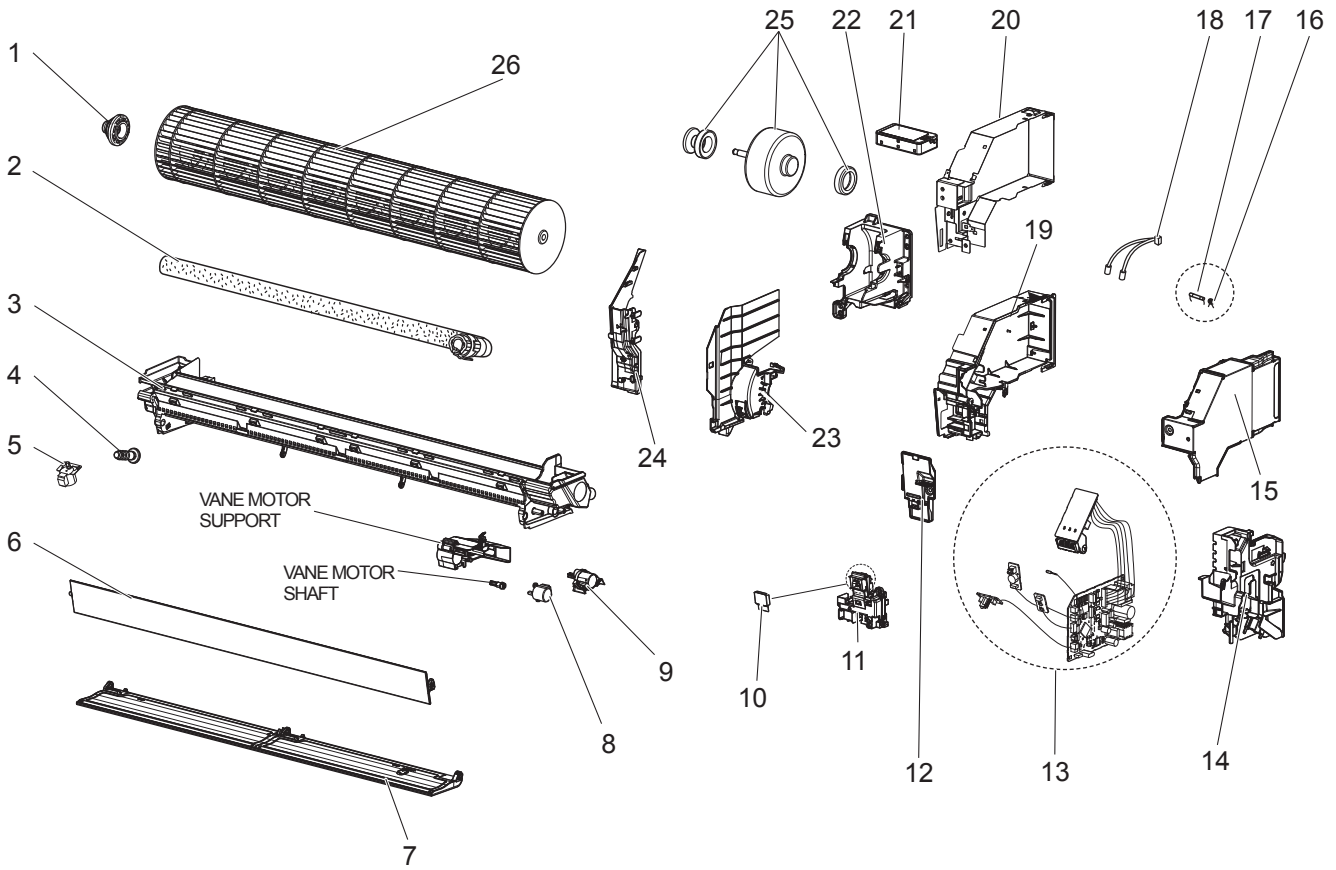
1. The part quantity below indicates the required number of pieces per unit.

No.	Part No.	Part name	MSZ-AP25VGK - E6	MSZ-AP25VGK - E7	MSZ-AP25VGK - E8	MSZ-AP35VGK - E6	MSZ-AP35VGK - E7	MSZ-AP35VGK - E8	MSZ-AP42VGK - E6	MSZ-AP42VGK - E7	MSZ-AP42VGK - E8	MSZ-AP50VGK - E6	MSZ-AP50VGK - E7	MSZ-AP50VGK - E8	Symbol in Wiring Diagram	Remarks
14	G2W 001 400	REMOTE CONTROLLER	1			1			1			1				SG17B
14	G2W 005 400	REMOTE CONTROLLER		1	1		1	1		1	1		1	1		SH20A

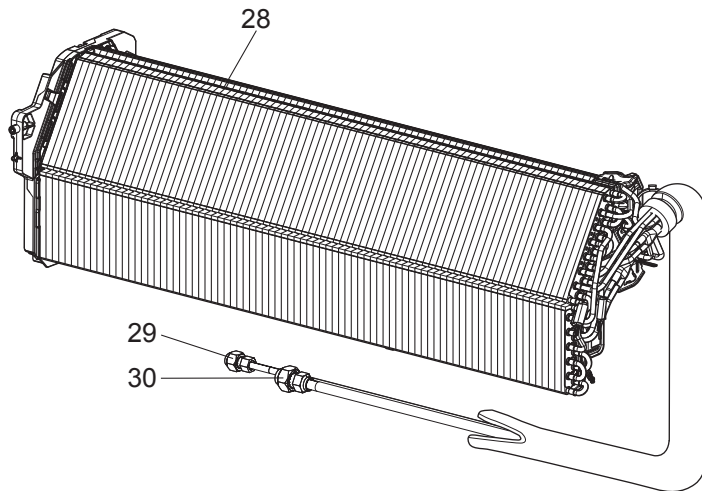
MSZ-AP25VGK- E6 , E7, E8
MSZ-AP42VGK- E6 , E7, E8

MSZ-AP35VGK- E6 , E7, E8
MSZ-AP50VGK- E6 , E7, E8

1-7. INDOOR UNIT ELECTRICAL PARTS AND FUNCTIONAL PARTS



1-8. INDOOR UNIT HEAT EXCHANGER



1-7. INDOOR UNIT ELECTRICAL PARTS AND FUNCTIONAL PARTS

1. The part quantity below indicates the required number of pieces per unit.
2. The circled No. indicates that the part is not shown in the figure.

No.	Part No.	Part name	MSZ-AP25VGK - [E6]	MSZ-AP25VGK - [E7]	MSZ-AP25VGK - [E8]	MSZ-AP35VGK - [E6]	MSZ-AP35VGK - [E7]	MSZ-AP35VGK - [E8]	MSZ-AP42VGK - [E6]	MSZ-AP42VGK - [E7]	MSZ-AP42VGK - [E8]	MSZ-AP50VGK - [E6]	MSZ-AP50VGK - [E7]	MSZ-AP50VGK - [E8]	Symbol in Wiring Diagram	Remarks [Drawing No.]
1	T2W EA2 509	BEARING MOUNT ASSEMBLY	1	1	1	1	1	1	1	1	1	1	1	1		Includes sleeve bearing
2	T2W EAC 703	DRAIN HOSE ASSEMBLY (SHORT)	1	1	1	1	1	1	1	1	1	1	1	1		520 mm
3	T2W EBC 235	NOZZLE ASSEMBLY	1	1	1	1	1	1	1	1	1	1	1	1		
4	T2W EA1 707	DRAIN CAP	1	1	1	1	1	1	1	1	1	1	1	1		
5	G2W 001 320	VANE MOTOR (VERTICAL)	1	1	1	1	1	1	1	1	1	1	1	1	MV3	RIGHT & LEFT
6	T2W ECM 041	HORIZONTAL VANE (UPPER) ASSEMBLY	1	1	1	1	1	1	1	1	1	1	1	1		Includes shaft
7	T2W ECN 041	HORIZONTAL VANE (LOWER) ASSEMBLY	1	1	1	1	1	1	1	1	1	1	1	1		Includes shaft
8	G2W 001 315	VANE MOTOR (HORIZONTAL) (UPPER)	1	1	1	1	1	1	1	1	1	1	1	1	MV1	UP & DOWN
9	G2W 002 315	VANE MOTOR (HORIZONTAL) (LOWER)	1	1	1	1	1	1	1	1	1	1	1	1	MV2	UP & DOWN
10	—	SWITCH SHEET	1	1	1	1	1	1	1	1	1	1	1	1		[DY79D306H01]
11	—	DISPLAY AND RECEIVER P.C. BOARD HOLDER ASSEMBLY	1	1	1	1	1	1	1	1	1	1	1	1		[DY25A832G02]
12	—	V.A. CLAMP ASSEMBLY	1	1	1	1	1	1	1	1	1	1	1	1		[DK00G227G01]
13	T2W F3A 450	ELECTRONIC CONTROL P.C. BOARD	1													Includes RECEIVER P.C. BOARD, DISPLAY P.C. BOARD, SWITCH/BUZZER P.C. BOARD, TERMINAL P.C. BOARD and ROOM TEMPERATURE THERMISTOR (RT11)
13	T2W F90 450	ELECTRONIC CONTROL P.C. BOARD		1	1											
13	T2W F3C 450	ELECTRONIC CONTROL P.C. BOARD				1										
13	T2W F91 450	ELECTRONIC CONTROL P.C. BOARD					1	1								
13	T2W F3D 450	ELECTRONIC CONTROL P.C. BOARD							1							
13	T2W F92 450	ELECTRONIC CONTROL P.C. BOARD								1	1					
13	T2W F3E 450	ELECTRONIC CONTROL P.C. BOARD										1				
13	T2W F93 450	ELECTRONIC CONTROL P.C. BOARD											1	1		
14	—	CABLE GUIDE	1	1	1	1	1	1	1	1	1	1	1	1		
15	—	PB-COVER (RIGHT)	1	1	1	1	1	1	1	1	1	1	1	1		[DK00G228G01]
16	G2W 001 425	VARISTOR	1	1	1	1	1	1	1	1	1	1	1	1	NR11	
17	T2W EA0 382	FUSE	1	1	1	1	1	1	1	1	1	1	1	1	F11	T3.15AL250V
18	G2W 001 310	INDOOR COIL THERMISTOR	1	1	1	1	1	1							RT12, RT13	
18	G2W 002 310	INDOOR COIL THERMISTOR							1	1	1	1	1	1	RT12, RT13	
19	—	PB-COVER (LEFT)	1	1	1	1	1	1	1	1	1	1	1	1		[DY00A833G01]
20	—	PB-BOX(LEFT)	1	1	1	1	1	1	1	1	1	1	1	1		[DY25A830G01]
21	G2W 001 405	Wi-Fi INTERFACE MAC-5661FB-E	1			1			1			1				MAC-5661FB-E
21	G2W 002 405	Wi-Fi INTERFACE MAC-5771F2-E		1	1		1	1		1	1		1	1		MAC-5771F2-E
22	—	MOTOR BED	1	1	1	1	1	1	1	1	1	1	1	1		[SQ00C974G01]
23	T2W EAE 023	MOTOR BAND	1	1	1	1	1	1	1	1	1	1	1	1		
24	—	WATER COVER	1	1	1	1	1	1	1	1	1	1	1	1		[SQ25Y849G01]
25	G2W 001 300	INDOOR FAN MOTOR	1	1	1	1	1	1	1	1	1	1	1	1	MF	RC0J30□□, Includes FAN MOTOR RUBBER MOUNT (2 PCS/SET)
26	T2W EB9 302	LINE FLOW FAN	1	1	1	1	1	1	1	1	1	1	1	1		
⑳	—	LEAD WIRE	1	1	1	1	1	1	1	1	1	1	1	1		[SM00C948G02], Between CN151 on ELECTRONIC CONTROL P.C. BOARD and VANE MOTOR

1-8. INDOOR UNIT HEAT EXCHANGER

1. The part quantity below indicates the required number of pieces per unit.

No.	Part No.	Part name	MSZ-AP25VGK - [E6]	MSZ-AP25VGK - [E7]	MSZ-AP25VGK - [E8]	MSZ-AP35VGK - [E6]	MSZ-AP35VGK - [E7]	MSZ-AP35VGK - [E8]	MSZ-AP42VGK - [E6]	MSZ-AP42VGK - [E7]	MSZ-AP42VGK - [E8]	MSZ-AP50VGK - [E6]	MSZ-AP50VGK - [E7]	MSZ-AP50VGK - [E8]	Symbol in Wiring Diagram	Remarks
28	T2W EHY 620	INDOOR HEAT EXCHANGER	1	1	1	1	1	1								Includes No. 29, 30
28	T2W EJ0 620	INDOOR HEAT EXCHANGER							1	1	1	1	1	1		Includes No. 29, 30
29	G2W 001 605	UNION (LIQUID)	1	1	1	1	1	1	1	1	1	1	1	1		ø6.35
30	G2W 002 605	UNION (GAS)	1	1	1	1	1	1	1	1	1	1	1	1		ø9.52

1-9. AIR CLEANING FILTER (V BLOCKING FILTER)

Every 3 months:

- Remove dirt by a vacuum cleaner.

When dirt cannot be removed by vacuum cleaning:

- Soak the filter and its frame in lukewarm water before rinsing it.
- After washing, dry it well in shade. Install all tabs of the air filter.

Every year:

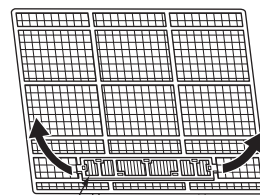
- Replace it with a new air cleaning filter for best performance.

NOTE 1: Clean the filters regularly for best performance and to reduce power consumption.

NOTE 2: Dirty filters cause condensation in the air conditioner which will contribute to the growth of fungi such as mold. It is therefore recommended to clean air filters every 2 weeks.

Model	Part No.
MSZ-AP25VGK - E8	MAC-2470FT-E
MSZ-AP35VGK - E8	
MSZ-AP42VGK - E8	
MSZ-AP50VGK - E8	

Pull to remove from the air filter



Air cleaning filter

2-1. AIR CLEANING FILTER (SILVER-IONIZED AIR PURIFIER FILTER)

Every 3 months:

- Remove dirt by a vacuum cleaner.

When dirt cannot be removed by vacuum cleaning:

- Soak the filter and its frame in lukewarm water before rinsing it.
- After washing, dry it well in shade. Install all tabs of the air filter.

Every year:

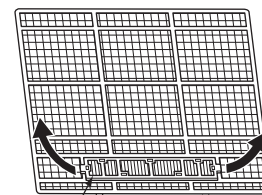
- Replace it with a new air cleaning filter for best performance.

NOTE 1: Clean the filters regularly for best performance and to reduce power consumption.

NOTE 2: Dirty filters cause condensation in the air conditioner which will contribute to the growth of fungi such as mold. It is therefore recommended to clean air filters every 2 weeks.

Model	Part No.
MSZ-AP25VG MSZ-AP35VG MSZ-AP42VG MSZ-AP50VG MSZ-AP25VGK MSZ-AP35VGK MSZ-AP42VGK MSZ-AP50VGK	MAC-2370FT-E

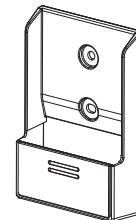
Pull to remove from the air filter



Air cleaning filter

2-2. REMOTE CONTROLLER HOLDER

Model	Part No.
MSZ-AP25VG MSZ-AP35VG MSZ-AP42VG MSZ-AP50VG MSZ-AP25VGK MSZ-AP35VGK MSZ-AP42VGK MSZ-AP50VGK	MAC-1300RC-E



MITSUBISHI ELECTRIC CORPORATION

HEAD OFFICE: TOKYO BUILDING, 2-7-3, MARUNOUCHI, CHIYODA-KU, TOKYO 100-8310, JAPAN

© Copyright 2017 MITSUBISHI ELECTRIC CORPORATION

Issued: Sep. 2023. No. OBB791 REVISED EDITION-E

Issued: Jun. 2022. No. OBB791 REVISED EDITION-D

Issued: Aug. 2021. No. OBB791 REVISED EDITION-C

Issued: Jan. 2020. No. OBB791 REVISED EDITION-B

Issued: Jul. 2019. No. OBB791 REVISED EDITION-A

Published: Dec. 2017. No. OBB791

Made in Japan

Specifications are subject to change without notice.