

PARTS CATALOG

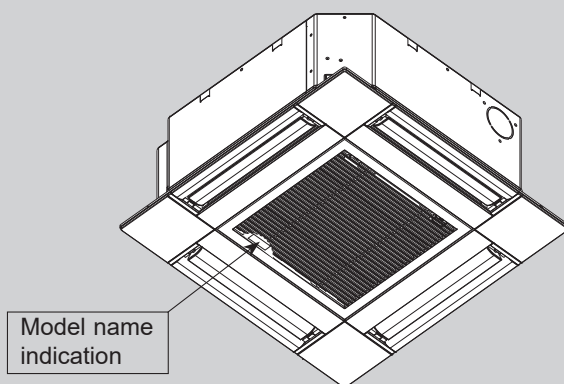
Series SLZ Ceiling Cassettes R32/R410A

Indoor unit
[Model Name]

SLZ-M15FA2
SLZ-M15FA2-ER
SLZ-M15FA2-ET
SLZ-M25FA2
SLZ-M25FA2-ER
SLZ-M25FA2-ET
SLZ-M35FA2
SLZ-M35FA2-ER
SLZ-M35FA2-ET
SLZ-M50FA2
SLZ-M50FA2-ER
SLZ-M50FA2-ET
SLZ-M60FA2
SLZ-M60FA2-ER
SLZ-M60FA2-ET

[Service Ref.]

SLZ-M15FA2.TH
SLZ-M15FA2-ER.TH
SLZ-M15FA2-ET.TH
SLZ-M25FA2.TH
SLZ-M25FA2-ER.TH
SLZ-M25FA2-ET.TH
SLZ-M35FA2.TH
SLZ-M35FA2-ER.TH
SLZ-M35FA2-ET.TH
SLZ-M50FA2.TH
SLZ-M50FA2-ER.TH
SLZ-M50FA2-ET.TH
SLZ-M60FA2.TH
SLZ-M60FA2-ER.TH
SLZ-M60FA2-ET.TH



INDOOR UNIT

CONTENTS

1. SERVICE PARTS LIST..... 2

SERVICE MANUAL (TCH067)

Mr. SLIM

1

SERVICE PARTS LIST

GRILLE PARTS

SLP-2FA (Standard)

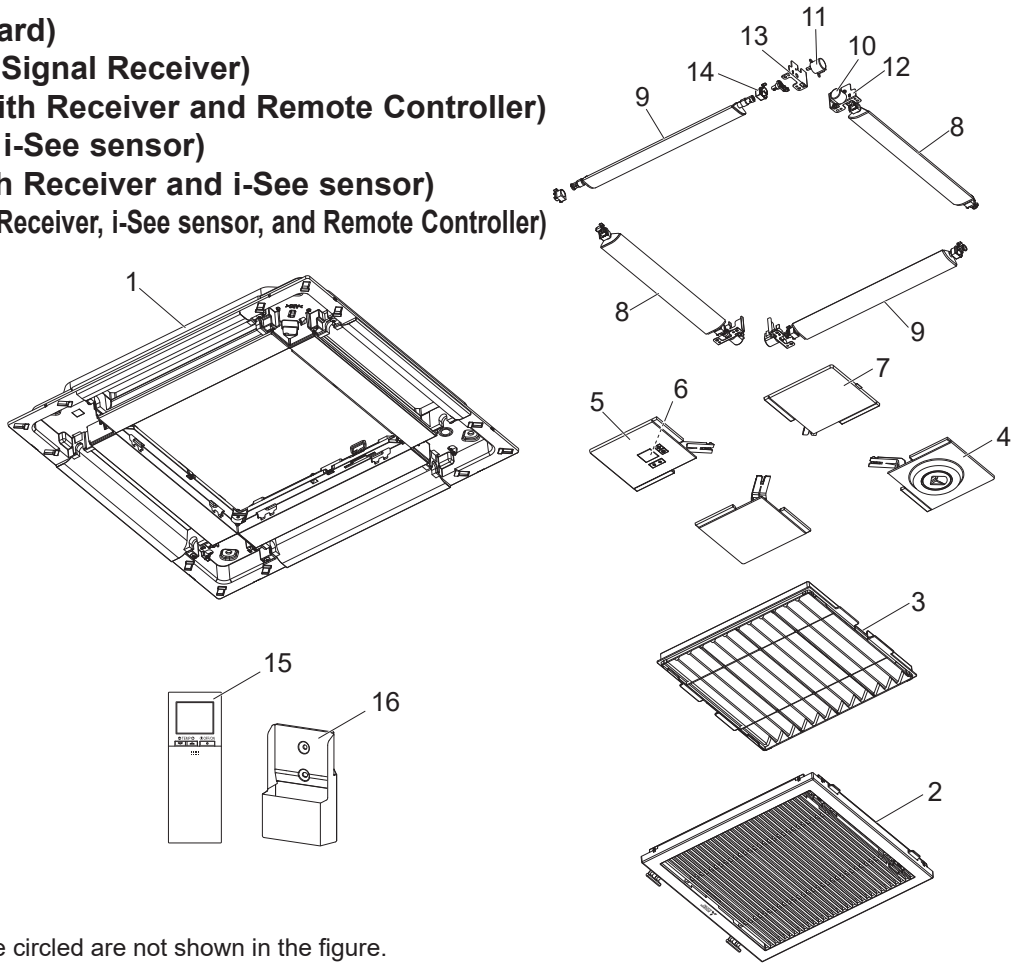
SLP-2FAL (with Signal Receiver)

SLP-2FALM2 (with Receiver and Remote Controller)

SLP-2FAE (with i-See sensor)

SLP-2FALE (with Receiver and i-See sensor)

SLP-2FALME2 (with Receiver, i-See sensor, and Remote Controller)

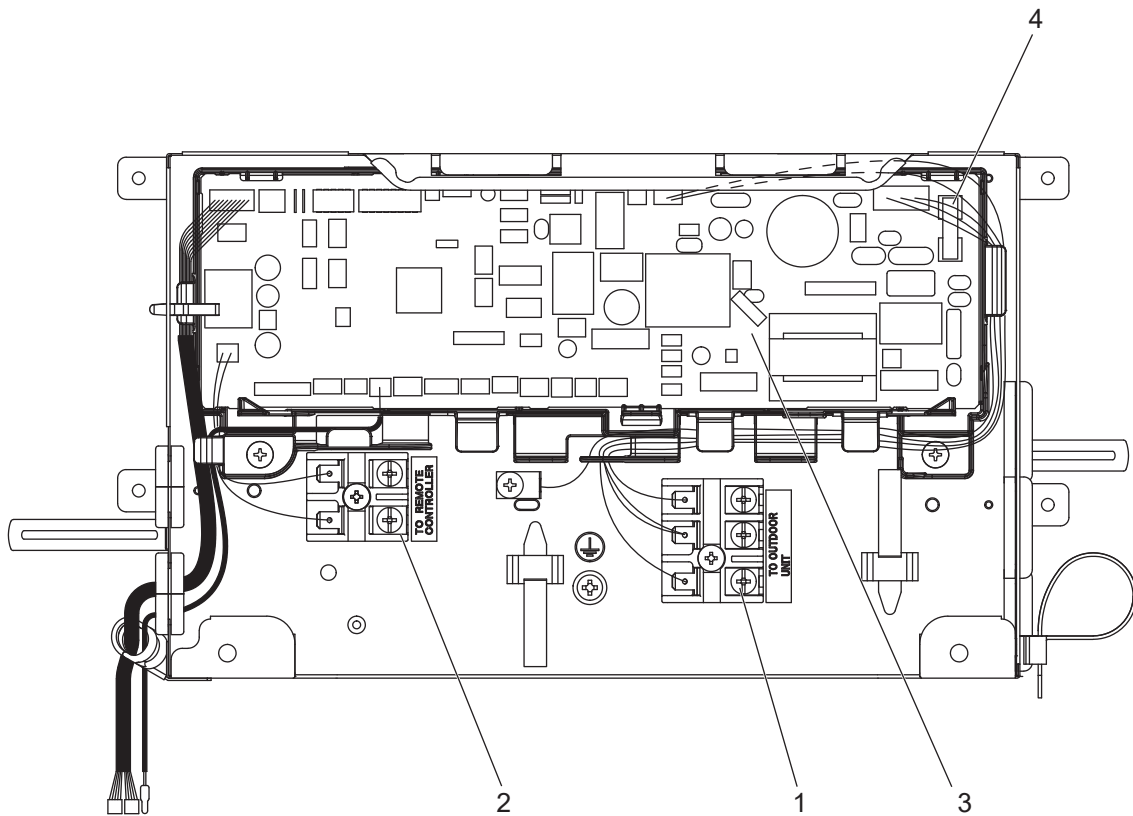


Parts numbers that are circled are not shown in the figure.

No.	Parts No.	Parts Name	Specification	Q'ty/unit						Wiring Diagram Symbol
				SLP-2FA	SLP-2FAL	SLP-2FALM2	SLP-2FAE	SLP-2FALE	SLP-2FALME2	
1	E27 C26 003	AIR OUTLET GRILLE		1	1	1	1	1	1	
2	E27 C26 010	INTAKE GRILLE		1	1	1	1	1	1	
3	E27 C26 100	AIR FILTER		1	1	1	1	1	1	
4	E27 C29 975	CORNER PANEL (i-See sensor)					1	1	1	
5	E27 C28 975	CORNER PANEL (Signal Receiver)			1	1		1	1	
6	E27 C27 317	WIRELESS REMOTE CONTROLLER BOARD			1	1		1	1	W.B
7	E27 C26 975	CORNER PANEL	Includes safety strap	4	3	3	3	2	2	
8	E27 C26 037	AUTO VANE -1	GREEN	2	2	2	2	2	2	
9	E27 C27 037	AUTO VANE -2	BLUE	2	2	2	2	2	2	
10	E27 C26 303	VANE MOTOR-1	GREEN	2	2	2	2	2	2	
11	E27 C27 303	VANE MOTOR-2	BLUE	2	2	2	2	2	2	
12	E27 C26 946	COUPLING-1	GREEN	2	2	2	2	2	2	
13	E27 C27 946	COUPLING-2	BLUE	2	2	2	2	2	2	
14	E27 C26 044	VANE BUSH		8	8	8	8	8	8	
15	E27 09G 426	WIRELESS REMOTE CONTROLLER				1			1	
16	E27 D44 083	HOLDER				1			1	
(17)	E27 C26 033	WIRE HOOK		2	2	2	2	2	2	
(18)	E27 C28 087	JUNCTION CABLE (Signal Receiver)			1	1		1	1	
(19)	E27 C27 087	JUNCTION CABLE (i-See sensor)					1	1	1	

ELECTRICAL PARTS

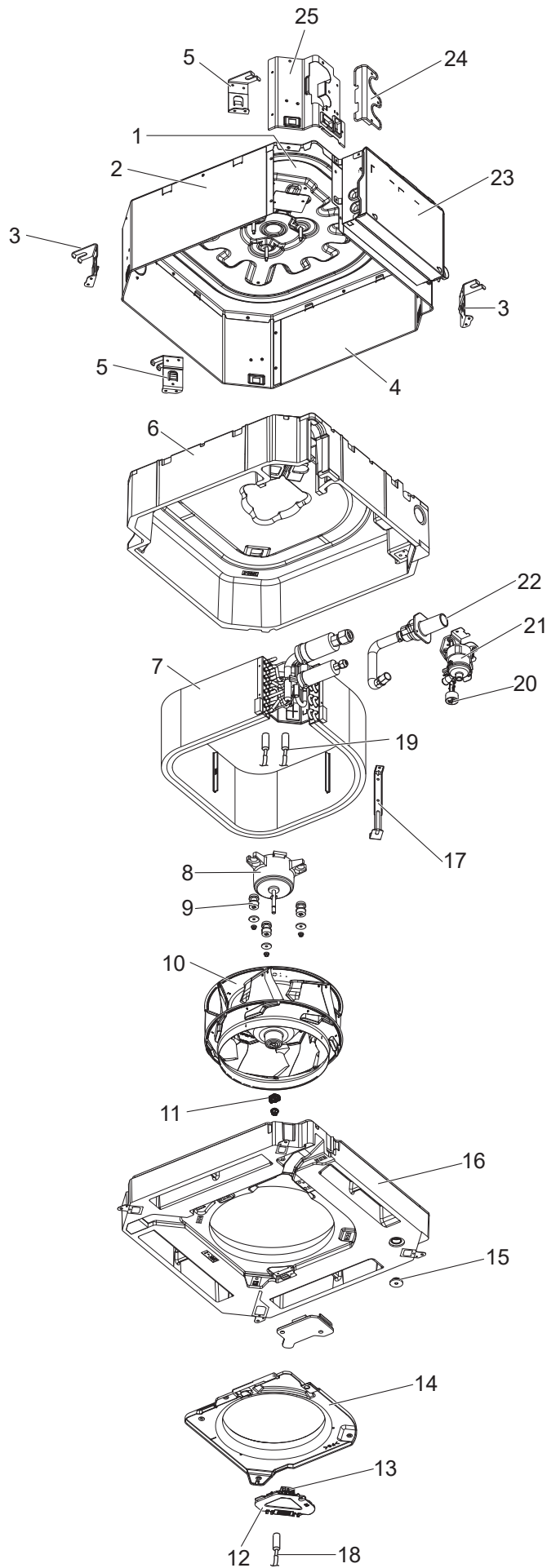
SLZ-M15FA2	SLZ-M25FA2	SLZ-M35FA2	SLZ-M50FA2	SLZ-M60FA2
SLZ-M15FA2-ER	SLZ-M25FA2-ER	SLZ-M35FA2-ER	SLZ-M50FA2-ER	SLZ-M60FA2-ER
SLZ-M15FA2-ET	SLZ-M25FA2-ET	SLZ-M35FA2-ET	SLZ-M50FA2-ET	SLZ-M60FA2-ET



No.	Parts No.	Parts Name	Specification	Q'ty/unit					Remarks (Drawing No.)	Wiring Diagram Symbol
				SLZ-M15FA2(-ER)(-ET).TH	SLZ-M25FA2(-ER)(-ET).TH	SLZ-M35FA2(-ER)(-ET).TH	SLZ-M50FA2(-ER)(-ET).TH	SLZ-M60FA2(-ER)(-ET).TH		
1	E27 162 375	TERMINAL BLOCK		1	1	1	1	1		TB4
2	E27 156 375	TERMINAL BLOCK		1	1	1	1	1		TB5
3	E27 95H 447	INDOOR CONTROLLER BOARD		1	1	1	1	1		I.B
4	E27 648 382	FUSE	FSL 250V/6.3A	1	1	1	1	1		F1

FUNCTIONAL PARTS

- SLZ-M15FA2.TH
- SLZ-M25FA2.TH
- SLZ-M35FA2.TH
- SLZ-M50FA2.TH
- SLZ-M60FA2.TH
- SLZ-M15FA2-ER.TH
- SLZ-M25FA2-ER.TH
- SLZ-M35FA2-ER.TH
- SLZ-M50FA2-ER.TH
- SLZ-M60FA2-ER.TH
- SLZ-M15FA2-ET.TH
- SLZ-M25FA2-ET.TH
- SLZ-M35FA2-ET.TH
- SLZ-M50FA2-ET.TH
- SLZ-M60FA2-ET.TH



FUNCTIONAL PARTS

No.	Parts No.	Parts Name	Specification	Q'ty/unit					Remarks (Drawing No.)	Wiring Diagram Symbol
				SLZ-M15FA2(-ER)(-ET).TH	SLZ-M25FA2(-ER)(-ET).TH	SLZ-M35FA2(-ER)(-ET).TH	SLZ-M50FA2(-ER)(-ET).TH	SLZ-M60FA2(-ER)(-ET).TH		
1	E27 C12 290	BASE		1	1	1	1	1		
2	E27 C13 124	DRUM-B		1	1	1	1	1		
3	E27 C12 808	LEG-1		2	2	2	2	2		
4	E27 C12 124	DRUM-A		1	1	1	1	1		
5	E27 C12 809	LEG-2		2	2	2	2	2		
6	E27 C12 092	INNER COVER ASSY		1	1	1	1	1		
7	E27 K49 620	INDOOR HEAT EXCHANGER		1	1	1				
	E27 K52 620	INDOOR HEAT EXCHANGER					1			
	E27 K53 620	INDOOR HEAT EXCHANGER						1		
8	E27 C12 300	INDOOR FAN MOTOR		1	1	1	1	1		MF
9	E27 C12 105	MOTOR MOUNT		3	3	3	3	3		
10	E27 C12 502	TURBO FAN		1	1	1	1	1		
11	E27 K05 097	SPL WASHER		1	1	1	1	1		
12	E27 C12 091	CONNECTOR COVER		1	1	1	1	1		
13	E27 C12 090	CONNECTOR BOX		1	1	1	1	1		
14	E27 C12 509	BELL MOUTH		1	1	1	1	1		
15	E27 436 524	DRAIN PLUG		1	1	1	1	1		
16	E27 C12 700	DRAIN PAN		1	1	1	1	1		
17	E27 C12 648	COIL SUPPORT		1	1	1	1	1		
18	E27 C12 308	ROOM TEMP.DETECTION THERMISTOR		1	1	1	1	1		TH1
19	E27 C12 307	PIPE TEMP. THERMISTOR/LIQUID/GAS		1	1	1	1	1		TH2,TH5
20	E27 C12 145	FLOAT SWITCH ASSY		1	1	1	1	1		FS
21	E27 C12 355	DRAIN PUMP		1	1	1	1	1		DP
22	E27 C12 702	DRAIN HOSE		1	1	1	1	1		
23	E27 C12 088	CONTROL BOX COVER		1	1	1	1	1		
24	E27 C13 006	COVER (DRUM-U)		1	1	1	1	1		
25	E27 C12 006	COVER (DRUM)		1	1	1	1	1		

Mr. SLIM

mitsubishi electric corporation

HEAD OFFICE: TOKYO BUILDING 2-7-3, MARUNOUCHI, CHIYODA-KU, TOKYO 100-8310, JAPAN

mitsubishi electric consumer products (thailand) co., ltd.
700/406 MOO 7, TAMBON DON HUA ROH,
AMPHUR MUANG, CHONBURI 20000 THAILAND
Published: Sep. 2021. No. TCB067
Made in Thailand

Specifications are subject to change without notice.