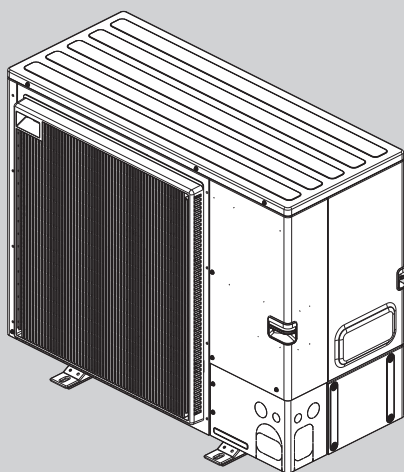


# PARTS CATALOG

**R32**

Outdoor unit [Model Name]	[Service Ref.]
PUZ-ZM100VDA(-ET)	<b>PUZ-ZM100VDA(-ET).TH</b>
PUZ-ZM125VDA(-ET)	<b>PUZ-ZM125VDA(-ET).TH</b>
PUZ-ZM140VDA(-ET)	<b>PUZ-ZM140VDA(-ET).TH</b>
PUZ-ZM100YDA(-ET)	<b>PUZ-ZM100YDA(-ET).TH</b>
PUZ-ZM125YDA(-ET)	<b>PUZ-ZM125YDA(-ET).TH</b>
PUZ-ZM140YDA(-ET)	<b>PUZ-ZM140YDA(-ET).TH</b>



PUZ-ZM100VDA(-ET).TH  
 PUZ-ZM125VDA(-ET).TH  
 PUZ-ZM140VDA(-ET).TH  
 PUZ-ZM100YDA(-ET).TH  
 PUZ-ZM125YDA(-ET).TH  
 PUZ-ZM140YDA(-ET).TH

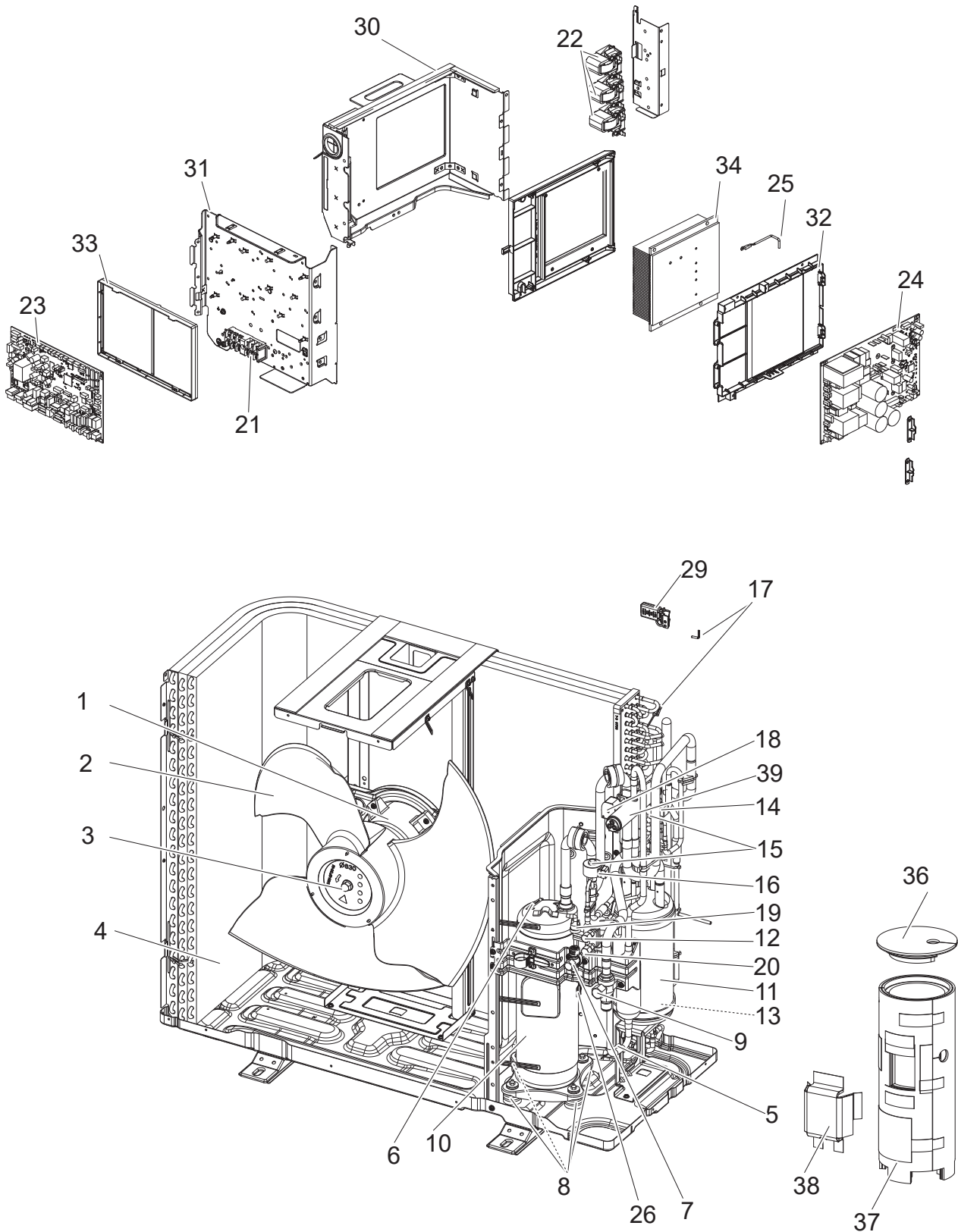
## CONTENTS

1. SERVICE PARTS LIST ..... 2

**SERVICE MANUAL (OCH832)**


**FUNCTIONAL AND ELECTRICAL PARTS**

**PUZ-ZM100VDA(-ET).TH  
 PUZ-ZM125VDA(-ET).TH  
 PUZ-ZM140VDA(-ET).TH**

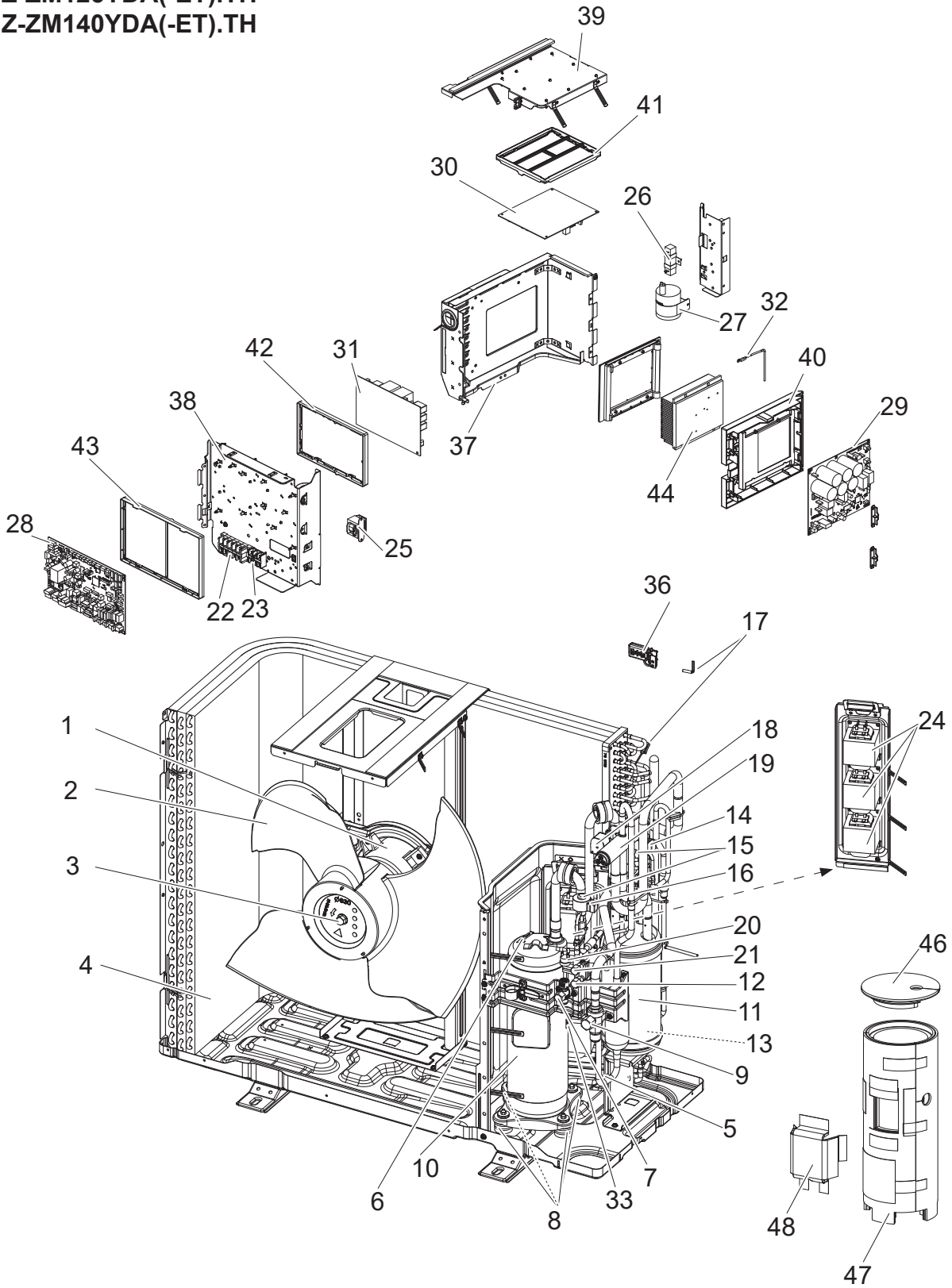


1. The part quantity below indicates the required number of pieces per unit.
2. The circled No. indicates that the part is not shown in the figure.

No.	Parts No.	Parts Name	PUZ-ZM100VDA.TH	PUZ-ZM125VDA.TH	PUZ-ZM140VDA.TH	PUZ-ZM100VDA-ET.TH	PUZ-ZM125VDA-ET.TH	PUZ-ZM140VDA-ET.TH	Wiring Diagram Symbol	Remarks [Drawing No.]
1	E27 80W 301	OUTDOOR FAN MOTOR	1	1	1	1	1	1	MF1	
2	E27 80W 501	PROPELLER FAN	1	1	1	1	1	1		
3	E27 80W 508	PROPELLER FAN NUT	1	1	1	1	1	1		
4	E27 80W 630	OUTDOOR HEAT EXCHANGER	1	1	1	1	1	1		
5	E27 81W 307	THERMISTOR (DISCHARGE)	1	1	1	1	1	1	TH4	
6	E27 83W 307	THERMISTOR (COMP. SURFACE)	1	1	1	1	1	1	TH33	
7	E27 942 661	STOP VALVE 3/8F	1	1	1	1	1	1		
8	E22 267 506	COMPRESSOR RUBBER MOUNT	4	4	4	4	4	4		4 pcs/set
9	E27 943 661	BALL VALVE 5/8F	1	1	1	1	1	1		
10	E27 80W 900	COMPRESSOR	1	1	1	1	1	1	MC	DVB33FFCMT
11	E27 M96 959	POWER RECEIVER	1	1	1	1	1	1		
12	E27 80W 641	CHARGE PLUG	1	1	1	1	1	1		
13	E27 80W 307	THERMISTOR (LIQUID)	1	1	1	1	1	1	TH3	
14	E27 80W 493	LINEAR EXPANSION VALVE COIL	1	1	1	1	1	1	LEV-A	WH
15	E27 80W 640	LINEAR EXPANSION VALVE	2	2	2	2	2	2	(LEV-A, LEV-B)	
16	E27 81W 493	LINEAR EXPANSION VALVE COIL	1	1	1	1	1	1	LEV-B	RD
17	E27 82W 307	THERMISTOR (2-PHASE PIPE, AMBIENT)	1	1	1	1	1	1	TH6, TH7	Combined type
18	E27 80W 490	SOLENOID COIL	1	1	1	1	1	1	21S4	GN
19	E27 942 646	HIGH PRESSURE SWITCH	1	1	1	1	1	1	63H	
20	E27 80W 641	CHARGE PLUG	1	1	1	1	1	1		
21	E27 E45 374	TERMINAL BLOCK	1	1	1	1	1	1	TB1	6P (LNE + S1,S2,S3)
22	E27 E45 337	REACTOR	3	3	3	3	3	3	DCL1, DCL2, DCL3	
23	E27 80W 450	OUTDOOR CONTROL P.C.BOARD	1	1	1	1	1	1	C.B.	
24	E27 80W 440	POWER BOARD	1	1	1	1	1	1	P.B.	
25	E27 W54 307	THERMISTOR (HEAT SINK)	1	1	1	1	1	1	TH8	
26	E27 80W 381	THERMAL PROTECTOR	1	1	1	1	1	1	TRS	
27	E27 74F 382	FUSE	2	2	2	2	2	2	F1, F2	T10AL250V
28	E27 648 382	FUSE	2	2	2	2	2	2	F3, F4	T6.3AL250V
29	E27 W53 079	SENSOR HOLDER	1	1	1	1	1	1		For TH7 (Ambient)
30	-	POWER BOARD PANEL	1	1	1	1	1	1		Semi-box type, for power parts [RK00V982G06]
31	-	CONT BOARD PANEL	1	1	1	1	1	1		Front side [RK00Y994G06]
32	-	BOARD CASE POWER	1	1	1	1	1	1		[RK25Y710G06]
33	-	BOARD CASE CONT	1	1	1	1	1	1		[RK25N611G01]
34	-	HEAT SINK	1	1	1	1	1	1		[BK11N530H02]
35	-	LEAD ASSY COMP	1	1	1	1	1	1		[BH78D937G04]
36	-	COMP FELT (TOP)	1	1	1	1	1	1		[RK33V422H02]
37	-	COMP FELT (BODY)	1	1	1					[RK33Y744G10]
37	-	COMP FELT (BODY)				1	1	1		[RK33Y744G11]
38	-	COMP FELT (TERMINAL)	1	1	1	1	1	1		[RK33V746H01]
39	E27 M97 961	4-WAY VALVE	1	1	1	1	1	1		

# FUNCTIONAL AND ELECTRICAL PARTS

PUZ-ZM100YDA(-ET).TH  
 PUZ-ZM125YDA(-ET).TH  
 PUZ-ZM140YDA(-ET).TH



1. The part quantity below indicates the required number of pieces per unit.
2. The circled No. indicates that the part is not shown in the figure.

No.	Parts No.	Parts Name							Wiring Diagram Symbol	Remarks [Drawing No.]
			PUZ-ZM100YDA.TH	PUZ-ZM125YDA.TH	PUZ-ZM140YDA.TH	PUZ-ZM100YDA-ET.TH	PUZ-ZM125YDA-ET.TH	PUZ-ZM140YDA-ET.TH		
1	E 27 80W 301	OUTDOOR FAN MOTOR	1	1	1	1	1	1	MF1	
2	E 27 80W 501	PROPELLER FAN	1	1	1	1	1	1		
3	E 27 80W 508	PROPELLER FAN NUT	1	1	1	1	1	1		
4	E 27 80W 630	OUTDOOR HEAT EXCHANGER	1	1	1	1	1	1		
5	E 27 81W 307	THERMISTOR (DISCHARGE)	1	1	1	1	1	1	TH4	
6	E 27 83W 307	THERMISTOR (COMP. SURFACE)	1	1	1	1	1	1	TH33	
7	E 27 942 661	STOP VALVE 3/8F	1	1	1	1	1	1		
8	E 22 267 506	COMPRESSOR RUBBER MOUNT	4	4	4	4	4	4		4 pcs/set
9	E 27 943 661	BALL VALVE 5/8F	1	1	1	1	1	1		
10	E 27 89W 900	COMPRESSOR	1	1	1	1	1	1	MC	DVB33FFDMT
11	E 27 M96 959	POWER RECEIVER	1	1	1	1	1	1		
12	E 27 80W 641	CHARGE PLUG	1	1	1	1	1	1		
13	E 27 80W 307	THERMISTOR (LIQUID)	1	1	1	1	1	1	TH3	
14	E 27 80W 493	LINEAR EXPANSION VALVE COIL	1	1	1	1	1	1	LEV-A	WH
15	E 27 80W 640	LINEAR EXPANSION VALVE	2	2	2	2	2	2	(LEV-A, LEV-B)	
16	E 27 81W 493	LINEAR EXPANSION VALVE COIL	1	1	1	1	1	1	LEV-B	RD
17	E 27 82W 307	THERMISTOR (2-PHASE PIPE, AMBIENT)	1	1	1	1	1	1	TH6, TH7	Combined type
18	E 27 80W 490	SOLENOID COIL	1	1	1	1	1	1	21S4	GN
19	E 27 M97 961	4-WAY VALVE	1	1	1	1	1	1		
20	E 27 942 646	HIGH PRESSURE SWITCH	1	1	1	1	1	1	63H	
21	E 27 80W 641	CHARGE PLUG	1	1	1	1	1	1		
22	E 27 943 374	TERMINAL BLOCK	1	1	1	1	1	1	TB1	5P (LNE + L1,L2,L3)
23	E 22 C92 375	TERMINAL BLOCK	1	1	1	1	1	1	TB2	3P (S1, S2, S3)
24	E 27 89W 337	REACTOR	3			3			ACL1, ACL2, ACL3	
24	E 27 90W 337	REACTOR		3			3		ACL1, ACL2, ACL3	
24	E 27 91W 337	REACTOR			3			3	ACL1, ACL2, ACL3	
25	E 27 92W 337	REACTOR	1	1	1	1	1	1	ACL4	
26	E 27 E33 360	RESISTOR	1	1	1	1	1	1	RS	
27	E 27 89W 351	CAPACITOR	1	1	1	1	1	1	CK	
28	E 27 80W 450	OUTDOOR CONTROL P.C.BOARD	1	1	1	1	1	1	C.B.	
29	E 27 89W 440	POWER BOARD	1	1	1	1	1	1	P.B.	
30	E 27 05Y 460	CONVERTER P.C. BOARD	1	1	1	1	1	1	CONV. B.	
31	E 27 89W 444	NOISE FILTER P.C. BOARD	1	1	1	1	1	1	N.F.	
32	E 27 E35 307	THERMISTOR (HEAT SINK)	1	1	1	1	1	1	TH8	
33	E 27 80W 381	THERMAL PROTECTOR	1	1	1	1	1	1	TRS	
34	E 27 74F 382	FUSE	2	2	2	2	2	2	F1, F2	T10AL250V
35	E 27 648 382	FUSE	2	2	2	2	2	2	F3, F4	T6.3AL250V
36	E 27 W53 079	SENSOR HOLDER	1	1	1	1	1	1		For TH7 (Ambient)

1. The part quantity below indicates the required number of pieces per unit.
2. The circled No. indicates that the part is not shown in the figure.

Continued from previous page.

No.	Parts No.	Parts Name	PUZ-ZM100YDA.TH	PUZ-ZM125YDA.TH	PUZ-ZM140YDA.TH	PUZ-ZM100YDA-ET.TH	PUZ-ZM125YDA-ET.TH	PUZ-ZM140YDA-ET.TH	Wiring Diagram Symbol	Remarks [Drawing No.]
37	-	POWER BOARD PANEL	1	1	1	1	1	1		Semi-box type, for power parts [RK00Y993G04]
38	-	CONT BOARD PANEL	1	1	1	1	1	1		Front side [RK00Y994G05]
39	-	CONV BOARD PANEL	1	1	1	1	1	1		Top side [RK00Y986G01]
40	-	BOARD CASE POWER	1	1	1	1	1	1		[RK25Y828G05]
41	-	BOARD CASE CONV	1	1	1	1	1	1		[RK25Y829G04]
42	-	BOARD CASE NF	1	1	1	1	1	1		[BK25N049G04]
43	-	BOARD CASE CONT	1	1	1	1	1	1		[RK25N611G01]
44	-	HEAT SINK	1	1	1	1	1	1		[RK11V505H01]
(45)	-	LEAD ASSY COMP	1	1	1	1	1	1		[BH78D970G02]
46	-	COMP FELT (TOP)	1	1	1	1	1	1		[RK33V422H02]
47	-	COMP FELT (BODY)	1	1	1					[RK33Y744G13]
47	-	COMP FELT (BODY)				1	1	1		[RK33Y744G14]
48	-	COMP FELT (TERMINAL)	1	1	1	1	1	1		[RK33V746H01]

## STRUCTURAL PARTS

PUZ-ZM100VDA(-ET).TH

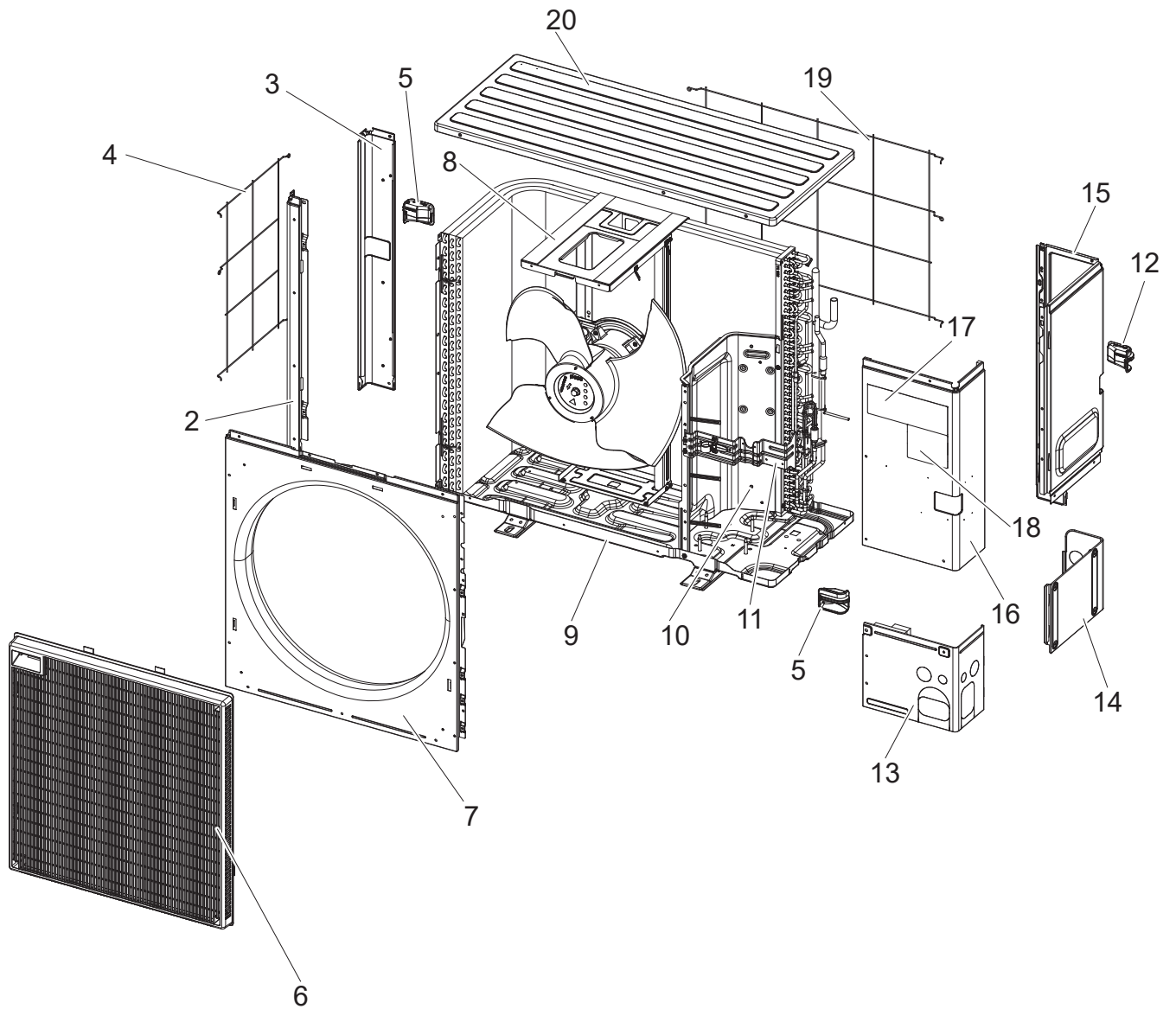
PUZ-ZM125VDA(-ET).TH

PUZ-ZM140VDA(-ET).TH

PUZ-ZM100YDA(-ET).TH

PUZ-ZM125YDA(-ET).TH

PUZ-ZM140YDA(-ET).TH



1. The part quantity below indicates the required number of pieces per unit.
2. The circled No. indicates that the part is not shown in the figure.

No.	Parts No.	Parts Name													Remarks [Drawing No.]
			PUZ-ZM100VDA.TH	PUZ-ZM125VDA.TH	PUZ-ZM140VDA.TH	PUZ-ZM100YDA.TH	PUZ-ZM125YDA.TH	PUZ-ZM140YDA.TH	PUZ-ZM100VDA-ET.TH	PUZ-ZM125VDA-ET.TH	PUZ-ZM140VDA-ET.TH	PUZ-ZM100YDA-ET.TH	PUZ-ZM125YDA-ET.TH	PUZ-ZM140YDA-ET.TH	
①	E 27 9 4 2 2 5 0	F.ST SCREW	52	52	52	65	65	65	52	52	52	65	65	65	
2	E 27 8 0 W 8 1 2	SIDE PILLER (L-FRONT)	1	1	1	1	1	1	1	1	1	1	1	1	
3	E 27 8 1 W 8 1 2	SIDE PILLER (L-REAR)	1	1	1	1	1	1	1	1	1	1	1	1	
4	E 27 8 1 W 5 2 3	SIDE GUARD	1	1	1	1	1	1	1	1	1	1	1	1	
5	E 27 9 4 2 0 0 9	HANDLE (FRONT)	2	2	2	2	2	2	2	2	2	2	2	2	
6	E 27 8 0 W 5 2 1	GRILLE	1	1	1	1	1	1	1	1	1	1	1	1	
7	E 27 8 0 W 2 3 2	FRONT PANEL	1	1	1	1	1	1	1	1	1	1	1	1	
8	E 27 8 0 W 5 1 5	MOTOR SUPPORT	1	1	1	1	1	1	1	1	1	1	1	1	
9	E 27 8 0 W 2 9 0	BASE	1	1	1	1	1	1	1	1	1	1	1	1	
10	E 27 8 0 W 2 9 3	SEPARATOR	1	1	1				1	1	1				
10	E 27 8 9 W 2 9 3	SEPARATOR				1	1	1				1	1	1	
11	—	VALVE BED	1	1	1	1	1	1	1	1	1	1	1	1	[RK00V939G01]
12	E 27 9 4 3 0 0 9	HANDLE (REAR)	1	1	1	1	1	1	1	1	1	1	1	1	
13	E 27 8 0 W 0 0 6	COVER PANEL (FRONT)	1	1	1	1	1	1	1	1	1	1	1	1	
14	E 27 8 1 W 0 0 6	COVER PANEL (REAR)	1	1	1	1	1	1	1	1	1	1	1	1	
15	E 27 8 0 W 0 8 5	SIDE PANEL (R)	1	1	1	1	1	1	1	1	1	1	1	1	
16	E 27 8 0 W 2 4 5	SERVICE PANEL	1	1	1	1	1	1	1	1	1	1	1	1	
17	—	BRAND LABEL	1	1	1	1	1	1	1	1	1	1	1	1	[BT79L338H01]
18	—	BRAND LABEL	1	1	1	1	1	1	1	1	1	1	1	1	[BT79L319H01]
19	E 27 8 0 W 5 2 3	REAR GUARD	1	1	1	1	1	1	1	1	1	1	1	1	
20	E 27 8 0 W 2 9 7	TOP PANEL	1	1	1	1	1	1	1	1	1	1	1	1	



**Mr. SLIM**

**mitsubishi electric corporation**

HEAD OFFICE: TOKYO BUILDING, 2-7-3, MARUNOUCHI, CHIYODA-KU, TOKYO 100-8310, JAPAN