

2-7. Wireless remote controller [PAR-FL32MA/PAR-FA32MA/PAR-SA9CA-E/PAR-SL101A-E/PAR-SE9FA-E/PAR-SF9FA-E/PAR-SL94B-E]

CONTROLLER



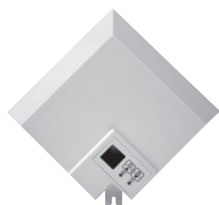
PAR-FL32MA



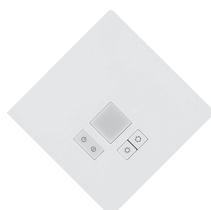
PAR-SL101A-E



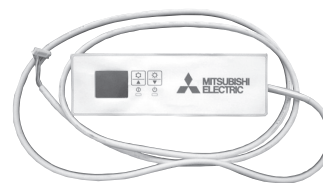
PAR-FA32MA/PAR-SA9CA-E



PAR-SE9FA-E
(4-way Cassette signal receiver)



PAR-SF9FA-E
(2x2 Cassette signal receiver)



PAR-SL94B-E
(Wireless remote controller kit for ceiling-suspended type)

■ Functions (PAR-FL32MA)

○: Available X: Not available

■ Functions (PAR-SL101A-E)

Item	Description	Setting	Display
ON/OFF	ON and OFF operation for a single group	○	○
Operation mode switching	Switches between Cool/Dry/Fan/Heat/Auto. *1	○	○
Temperature setting	Changes the set temperature. * Set temperature range varies depending on the indoor unit model.	○	○
Fan speed setting	Models with 4 air flow speed settings: Hi/Mid-1/Mid-2/Low Models with 3 air flow speed settings: Hi/Mid/Low Models with 2 air flow speed settings: Hi/Low Auto setting varies depending on the model.	○ ^{*3}	○ ^{*3}
Air flow direction setting	Air flow direction angles (4-angle, Swing) Auto Louver ON/OFF. Air flow direction settings vary depending on the model.	○ ^{*3}	○ ^{*3}
Timer operation	One ON/OFF setting can be set per day.	○	○
Permit/Prohibit local operation	Individually prohibit operation of each local remote control function (ON/OFF, Change operation mode, Set temperature, Reset filter).	X	○ ^{*2}
Indoor unit intake temperature	Measures the intake temperature of the indoor unit when the indoor unit is operating.	X	X
Error	When an error occurs on the air conditioner unit, the operation lamp on the signal receiving unit will flash.	X	○
Test run	This operates air conditioner units in test run mode.	○	○

Item	Description	Setting	Display
OFF/ON	OFF and ON operation for a single group	○	○
Operation mode switching	Switches between Cool/Dry/Fan/Heat/Auto *1/Dual set point *1	○	○
Temperature setting	Changes the set temperature. * Set temperature range varies depending on the indoor unit model.	○	○
Fan speed setting	Models with 4 air flow speed settings: Hi/Mid-1/Mid-2/Low Models with 3 air flow speed settings: Hi/Mid/Low Models with 2 air flow speed settings: Hi/Low Auto setting varies depending on the model.	○ ^{*3}	○ ^{*3}
Air flow direction setting	Air flow direction angles (4-angle, Swing) Auto Louver ON/OFF. Air flow direction settings vary depending on the model.	○ ^{*3}	○ ^{*3}
Timer operation	One OFF/ON setting can be set for one day.	○	○
Permit/Prohibit local operation	Individually prohibit operation of each local remote control function (OFF/ON, Change operation mode, Set temperature, Reset filter).	X	○ ^{*2}
Indoor unit intake	Measures the intake temperature of the indoor unit when the indoor unit is operating.	X	X
Error	When an error occurs on the air conditioner unit, the operation lamp on the signal receiving unit will flash.	X	○
Test run	This operates air conditioner units in test run mode.	○	○
Individual vane settings	The airflow directions of the four vanes can each be adjusted independently. Easily set the optimum airflow according to the room setting.	○	X
3D i-see Sensor (Direct/Indirect Airflow)	Pressing the i-see button enables direct or indirect setting of all vanes.	○	X

*1. Auto only supported for the CITY MULTI R2- and WR2-Series.
Operation modes vary depending on the air conditioner unit.

*2. If operation is performed when the local remote controller inactivation command is received from the main system controller, a buzzer will sound an LED will flash.

*3. Some models will have different display for the air flow direction and fan speed.
Set the flow direction and fan speed when performing initial setting.

Compatibility table

Indoor unit model	Receiver model	Transmitter model
PLFY-P VMMD-E	PAR-FA32MA	PAR-FL32MA
PEFY-P VMR-E-L/R		
PEFY-P VMS1(L)-E		
PEFY-P VMA3-E		
PEFY-P VMA(L)-E3		
PEFY-M VMA(L)-A1		
PEFY-M VMA2-A		
PEFY-P VMHS-E		
PEFY-P VMHS2-E		
PEFY-P VMHS-E-F		
PEFY-W VMS-A		
PEFY-WP VMS1-E		
PEFY-W VMA(L)-A		
PEFY-W VMA2-A		
PEFY-WP VMA-E		
PEFY-WL VMHS-A		
PFFY-P VKM-E2		
PFFY-P VLEM-E		
PFFY-P-VEM-E		
PFFY-P VCM-E		
PFFY-W VCM-A		
PFFY-WL-VCM-A		
PFFY-WL-VEM-A		

Indoor unit model	Receiver model	Transmitter model
PLFY-P VFM-E1	PAR-SF9FA-E	*1 *2 PAR-SL101A-E (PAR-FL32MA)
PLFY-WL VFM-E		
PLFY-P VEM-E	PAR-SE9FA-E	*1 *2 PAR-SL101A-E (PAR-FL32MA)
PLFY-EP VEM-E		
PLFY-M VEM6-E		
PLFY-WL VEM-E		
PLFY-EWL VEM-E	PAR-SA9CA-E	*1 *2 PAR-SL101A-E (PAR-FL32MA)
PEFY-P VMA(L)-E4		
PCFY-P VKM-E	PAR-SL94B-E(PAR-SL94B-E includes a receiver and a transmitter.)	
PMFY-P VBM-E	Built-in	PAR-FL32MA
PKFY-P VKM-E	Built-in	*1 *2 PAR-SL101A-E (PAR-FL32MA)
PKFY-P VLM-E		
PKFY-WL VLM-E		
PKFY-WL VKM-E		

*1 Use either PAR-SL101A-E or PAR-FL32MA to control each indoor unit, not both.

*2 Multiple indoor units cannot be controlled with the PAR-SL101A-E.
Only one indoor unit can be used in each group.

External dimension

Unit: mm [in.]

