

PARTS CATALOG

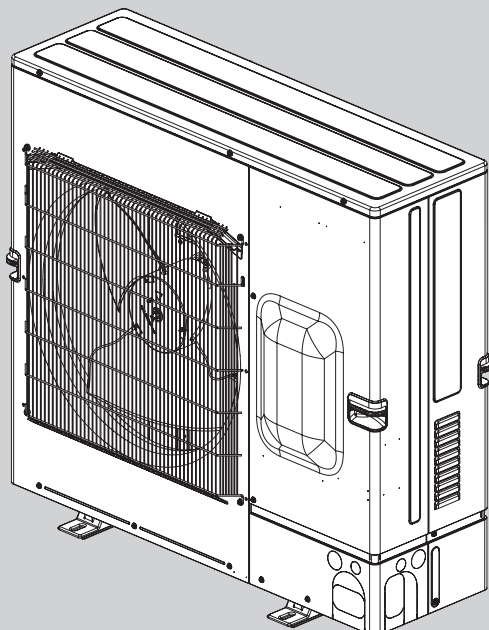
<Outdoor unit>

Model name

PUMY-SM112VKM	PUMY-SM112VKM-ET
PUMY-SM125VKM	PUMY-SM125VKM-ET
PUMY-SM140VKM	PUMY-SM140VKM-ET
PUMY-SM112YKM	PUMY-SM112YKM-ET
PUMY-SM125YKM	PUMY-SM125YKM-ET
PUMY-SM140YKM	PUMY-SM140YKM-ET

Salt proof model

PUMY-SM112VKM-BS	PUMY-SM112VKM-ET-BS
PUMY-SM125VKM-BS	PUMY-SM125VKM-ET-BS
PUMY-SM140VKM-BS	PUMY-SM140VKM-ET-BS
PUMY-SM112YKM-BS	PUMY-SM112YKM-ET-BS
PUMY-SM125YKM-BS	PUMY-SM125YKM-ET-BS
PUMY-SM140YKM-BS	PUMY-SM140YKM-ET-BS



1. SERVICE REF.....	3
2. SERVICE PARTS LIST.....	4
3. OPTIONAL PARTS.....	16

SERVICE MANUAL (OCH794)

CITY MULTI

PUMY-SM112VKM.TH
PUMY-SM112VKM-ET.TH
PUMY-SM125VKM.TH
PUMY-SM125VKM-ET.TH
PUMY-SM140VKM.TH
PUMY-SM140VKM-ET.TH

PUMY-SM112YKM.TH
PUMY-SM112YKM-ET.TH
PUMY-SM125YKM.TH
PUMY-SM125YKM-ET.TH
PUMY-SM140YKM.TH
PUMY-SM140YKM-ET.TH

PUMY-SM112VKM-BS.TH
PUMY-SM112VKM-ET-BS.TH
PUMY-SM125VKM-BS.TH
PUMY-SM125VKM-ET-BS.TH
PUMY-SM140VKM-BS.TH
PUMY-SM140VKM-ET-BS.TH

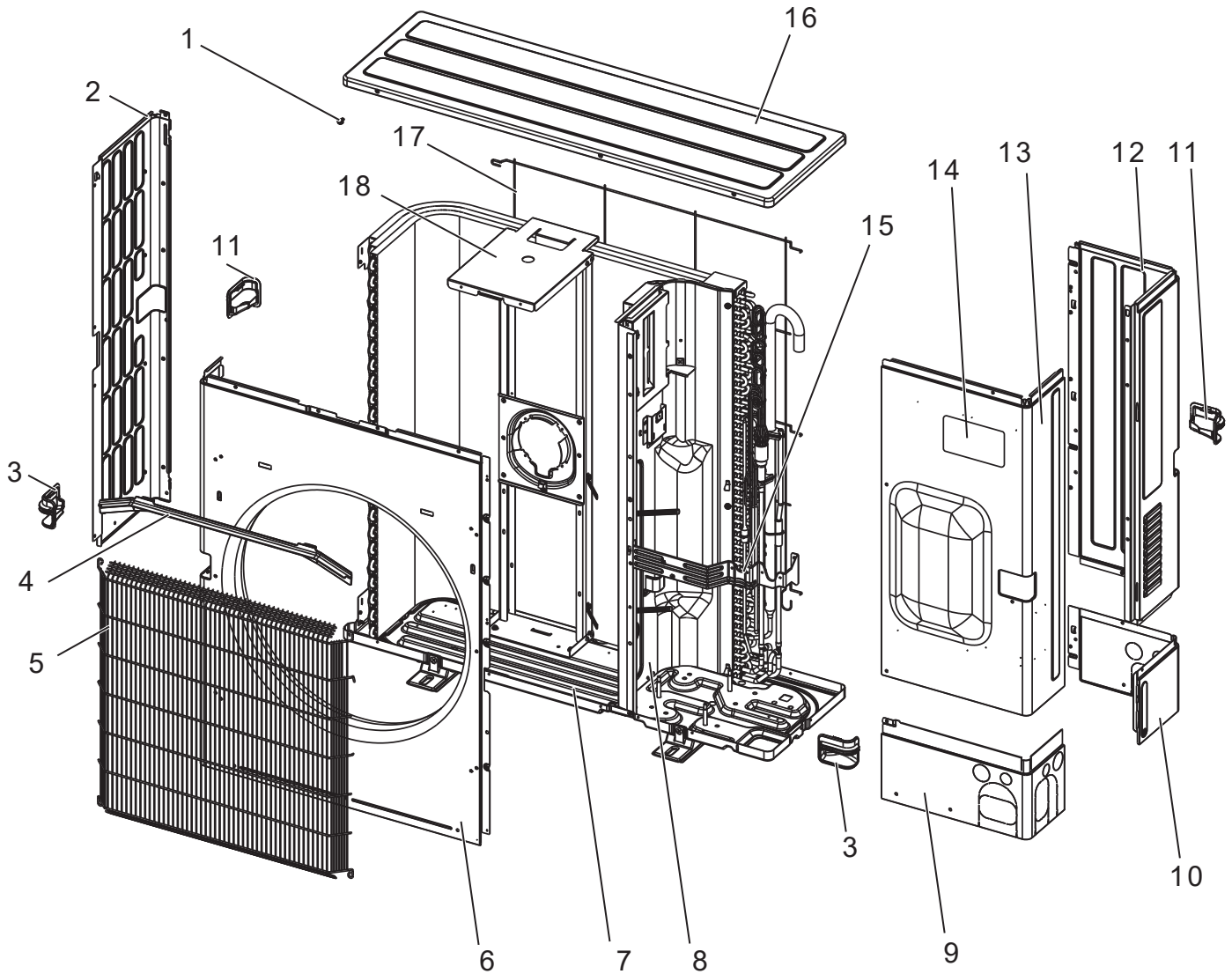
PUMY-SM112YKM-BS.TH
PUMY-SM112YKM-ET-BS.TH
PUMY-SM125YKM-BS.TH
PUMY-SM125YKM-ET-BS.TH
PUMY-SM140YKM-BS.TH
PUMY-SM140YKM-ET-BS.TH

2 SERVICE PARTS LIST

STRUCTURAL PARTS

PUMY-SM112VKM(-BS).TH
PUMY-SM125VKM(-BS).TH
PUMY-SM140VKM(-BS).TH

PUMY-SM112VKM-ET(-BS).TH
PUMY-SM125VKM-ET(-BS).TH
PUMY-SM140VKM-ET(-BS).TH



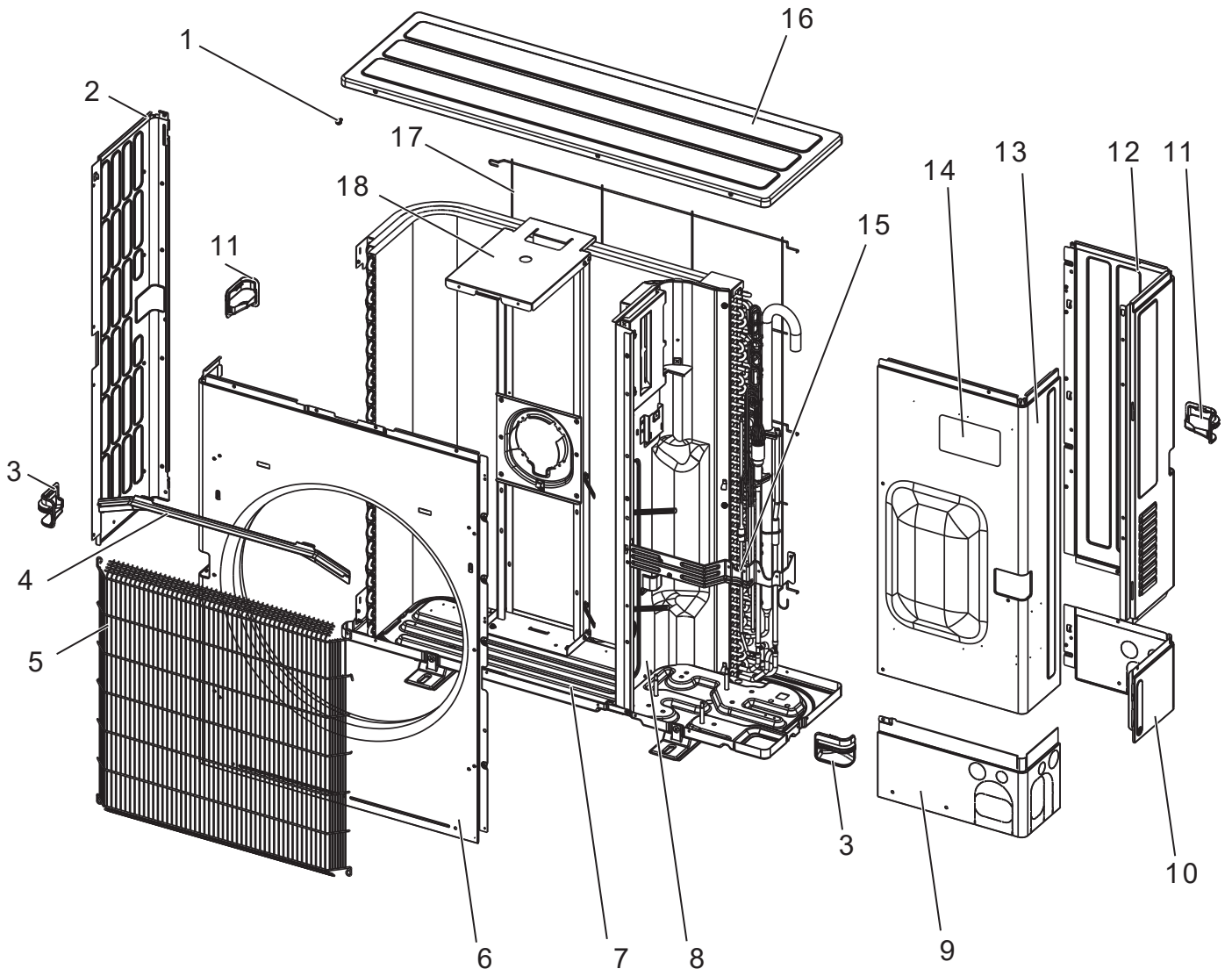
1. The part quantity below indicates the required number of pieces per unit.
2. The circled No. indicates that the part is not shown in the figure.

No.	Parts No.	Parts Name	PUMY-SM112VKM.TH	PUMY-SM112VKM-ET.TH	PUMY-SM125VKM.TH	PUMY-SM125VKM-ET.TH	PUMY-SM140VKM.TH	PUMY-SM140VKM-ET.TH	Remarks [Drawing No.]
1	E 2 7 9 4 2 2 5 0	F. ST SCREW	41	41	41	41	41	41	
2	E 2 7 E 3 3 0 8 6	SIDE PANEL (L)	1	1	1	1	1	1	
3	E 2 7 9 4 2 0 0 9	HANDLE (FRONT)	2	2	2	2	2	2	
4	E 2 7 A 1 5 5 3 1	ICE GUARD	1	1	1	1	1	1	
5	E 2 7 H 9 3 5 2 1	WIRE GRILLE	1	1	1	1	1	1	
6	E 2 7 H 9 3 2 3 2	FRONT PANEL	1	1	1	1	1	1	
7	E 2 7 H 1 0 2 9 0	BASE	1	1	1	1	1	1	
8	E 2 7 3 3 U 2 9 3	SEPARATOR	1	1	1	1	1	1	
9	E 2 7 3 3 U 0 0 6	COVER PANEL (FRONT)	1	1	1	1	1	1	
10	E 2 7 3 4 U 0 0 6	COVER PANEL (REAR)	1	1	1	1	1	1	
11	E 2 7 9 4 3 0 0 9	HANDLE (REAR)	2	2	2	2	2	2	
12	E 2 7 3 3 U 0 8 5	SIDE PANEL (R)	1	1	1	1	1	1	
13	E 2 7 3 3 U 2 4 5	SERVICE PANEL	1	1	1	1	1	1	
14	—	BLAND LABEL	1	1	1	1	1	1	[BT79G823H01]
15	—	VALVE BED	1	1	1	1	1	1	[RK00V662G05]
16	E 2 7 E 3 3 2 9 7	TOP PANEL	1	1	1	1	1	1	
17	E 2 7 E 3 3 5 2 3	REAR GUARD	1	1	1	1	1	1	
18	E 2 7 H 9 3 5 1 5	MOTOR SUPPORT	1	1	1	1	1	1	

No.	Parts No.	Parts Name	PUMY-SM112VKM-BS.TH	PUMY-SM112VKM-ET-BS.TH	PUMY-SM125VKM-BS.TH	PUMY-SM125VKM-ET-BS.TH	PUMY-SM140VKM-BS.TH	PUMY-SM140VKM-ET-BS.TH	Remarks [Drawing No.]
1	E 2 7 9 4 2 2 5 0	F. ST SCREW	41	41	41	41	41	41	
2	E 2 7 H 1 0 0 8 6	SIDE PANEL (L)	1	1	1	1	1	1	
3	E 2 7 9 4 2 0 0 9	HANDLE (FRONT)	2	2	2	2	2	2	
4	E 2 7 A 1 5 5 3 1	ICE GUARD	1	1	1	1	1	1	
5	E 2 7 H 9 3 5 2 1	WIRE GRILLE	1	1	1	1	1	1	
6	E 2 7 H 9 9 2 3 2	FRONT PANEL	1	1	1	1	1	1	
7	E 2 7 H 1 0 2 9 0	BASE	1	1	1	1	1	1	
8	E 2 7 3 6 U 2 9 3	SEPARATOR	1	1	1	1	1	1	
9	E 2 7 3 6 U 0 0 6	COVER PANEL (FRONT)	1	1	1	1	1	1	
10	E 2 7 3 7 U 0 0 6	COVER PANEL (REAR)	1	1	1	1	1	1	
11	E 2 7 9 4 3 0 0 9	HANDLE(REAR)	2	2	2	2	2	2	
12	E 2 7 3 7 U 0 8 5	SIDE PANEL (R)	1	1	1	1	1	1	
13	E 2 7 3 6 U 2 4 5	SERVICE PANEL	1	1	1	1	1	1	
14	—	BLAND LABEL	1	1	1	1	1	1	[BT79G823H01]
15	—	VALVE BED	1	1	1	1	1	1	[RK00V662G06]
16	E 2 7 H 1 0 2 9 7	TOP PANEL	1	1	1	1	1	1	
17	E 2 7 E 3 3 5 2 3	REAR GUARD	1	1	1	1	1	1	
18	E 2 7 H 9 9 5 1 5	MOTOR SUPPORT	1	1	1	1	1	1	

PUMY-SM112YKM(-BS).TH
PUMY-SM125YKM(-BS).TH
PUMY-SM140YKM(-BS).TH

PUMY-SM112YKM-ET(-BS).TH
PUMY-SM125YKM-ET(-BS).TH
PUMY-SM140YKM-ET(-BS).TH



1. The part quantity below indicates the required number of pieces per unit.
2. The circled No. indicates that the part is not shown in the figure.

No.	Parts No.	Parts Name	PUMY-SM112YKM.TH	PUMY-SM112YKM-ET.TH	PUMY-SM125YKM.TH	PUMY-SM125YKM-ET.TH	PUMY-SM140YKM.TH	PUMY-SM140YKM-ET.TH	Remarks [Drawing No.]
1	E 2 7 9 4 2 2 5 0	F. ST SCREW	41	41	41	41	41	41	
2	E 2 7 E 3 3 0 8 6	SIDE PANEL (L)	1	1	1	1	1	1	
3	E 2 7 9 4 2 0 0 9	HANDLE (FRONT)	2	2	2	2	2	2	
4	E 2 7 A 1 5 5 3 1	ICE GUARD	1	1	1	1	1	1	
5	E 2 7 H 9 3 5 2 1	WIRE GRILLE	1	1	1	1	1	1	
6	E 2 7 H 9 3 2 3 2	FRONT PANEL	1	1	1	1	1	1	
7	E 2 7 H 1 0 2 9 0	BASE	1	1	1	1	1	1	
8	E 2 7 3 3 U 2 9 3	SEPARATOR	1	1	1	1	1	1	
9	E 2 7 3 3 U 0 0 6	COVER PANEL (FRONT)	1	1	1	1	1	1	
10	E 2 7 3 4 U 0 0 6	COVER PANEL (REAR)	1	1	1	1	1	1	
11	E 2 7 9 4 3 0 0 9	HANDLE (REAR)	2	2	2	2	2	2	
12	E 2 7 3 3 U 0 8 5	SIDE PANEL (R)	1	1	1	1	1	1	
13	E 2 7 3 3 U 2 4 5	SERVICE PANEL	1	1	1	1	1	1	
14	—	BLAND LABEL	1	1	1	1	1	1	[BT79G823H01]
15	—	VALVE BED	1	1	1	1	1	1	[RK00V662G05]
16	E 2 7 E 3 3 2 9 7	TOP PANEL	1	1	1	1	1	1	
17	E 2 7 E 3 3 5 2 3	REAR GUARD	1	1	1	1	1	1	
18	E 2 7 H 9 3 5 1 5	MOTOR SUPPORT	1	1	1	1	1	1	

No.	Parts No.	Parts Name	PUMY-SM112YKM-BS.TH	PUMY-SM112YKM-ET-BS.TH	PUMY-SM125YKM-BS.TH	PUMY-SM125YKM-ET-BS.TH	PUMY-SM140YKM-BS.TH	PUMY-SM140YKM-ET-BS.TH	Remarks [Drawing No.]
1	E 2 7 9 4 2 2 5 0	F. ST SCREW	41	41	41	41	41	41	
2	E 2 7 H 1 0 0 8 6	SIDE PANEL (L)	1	1	1	1	1	1	
3	E 2 7 9 4 2 0 0 9	HANDLE (FRONT)	2	2	2	2	2	2	
4	E 2 7 A 1 5 5 3 1	ICE GUARD	1	1	1	1	1	1	
5	E 2 7 H 9 3 5 2 1	WIRE GRILLE	1	1	1	1	1	1	
6	E 2 7 H 9 9 2 3 2	FRONT PANEL	1	1	1	1	1	1	
7	E 2 7 H 1 0 2 9 0	BASE	1	1	1	1	1	1	
8	E 2 7 3 6 U 2 9 3	SEPARATOR	1	1	1	1	1	1	
9	E 2 7 3 6 U 0 0 6	COVER PANEL (FRONT)	1	1	1	1	1	1	
10	E 2 7 3 7 U 0 0 6	COVER PANEL (REAR)	1	1	1	1	1	1	
11	E 2 7 9 4 3 0 0 9	HANDLE(REAR)	2	2	2	2	2	2	
12	E 2 7 3 7 U 0 8 5	SIDE PANEL (R)	1	1	1	1	1	1	
13	E 2 7 3 6 U 2 4 5	SERVICE PANEL	1	1	1	1	1	1	
14	—	BLAND LABEL	1	1	1	1	1	1	[BT79G823H01]
15	—	VALVE BED	1	1	1	1	1	1	[RK00V662G06]
16	E 2 7 H 1 0 2 9 7	TOP PANEL	1	1	1	1	1	1	
17	E 2 7 E 3 3 5 2 3	REAR GUARD	1	1	1	1	1	1	
18	E 2 7 H 9 9 5 1 5	MOTOR SUPPORT	1	1	1	1	1	1	

FUNCTIONAL PARTS

PUMY-SM112VKM.TH

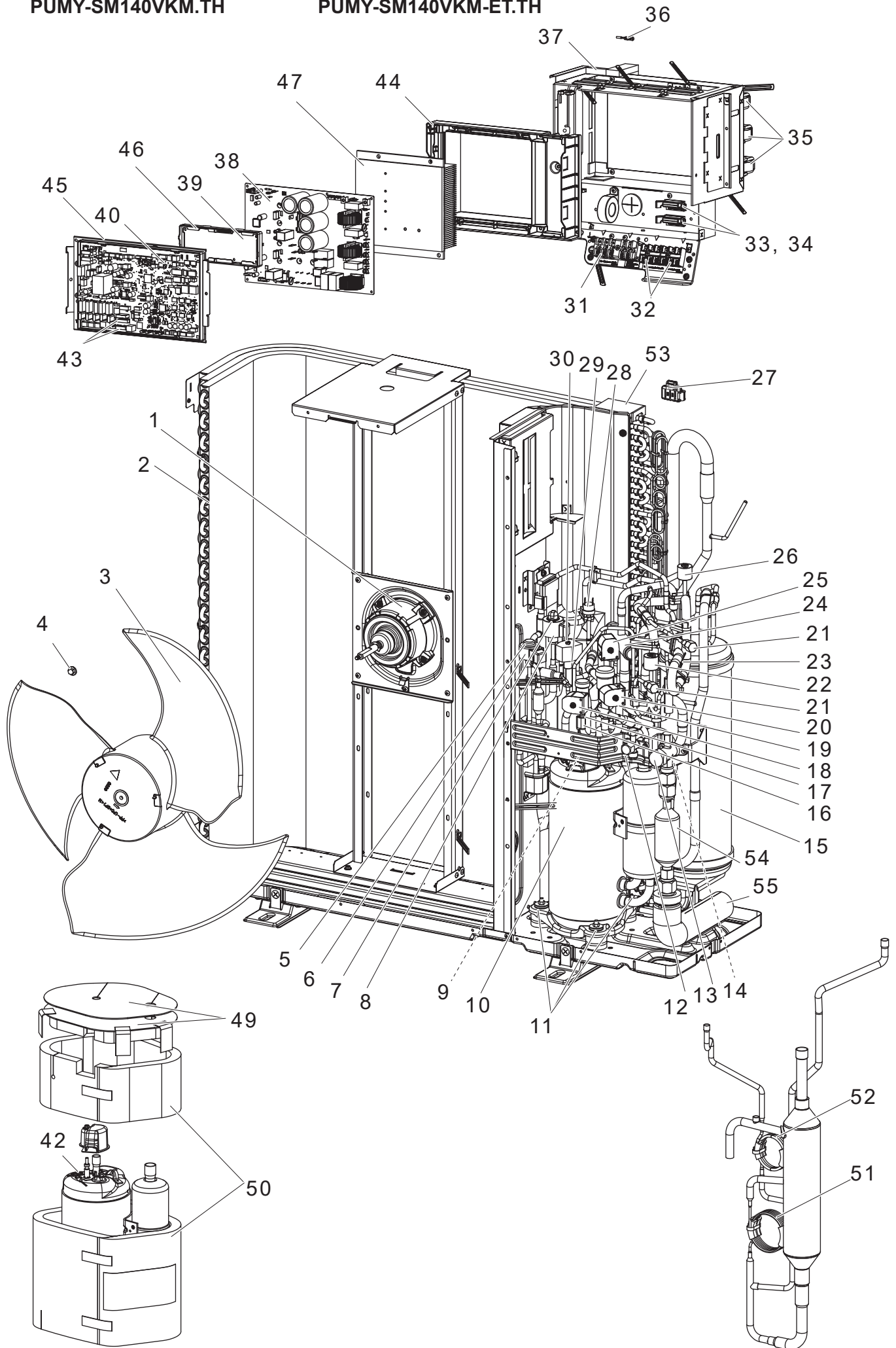
PUMY-SM125VKM.TH

PUMY-SM140VKM.TH

PUMY-SM112VKM-ET.TH

PUMY-SM125VKM-ET.TH

PUMY-SM140VKM-ET.TH

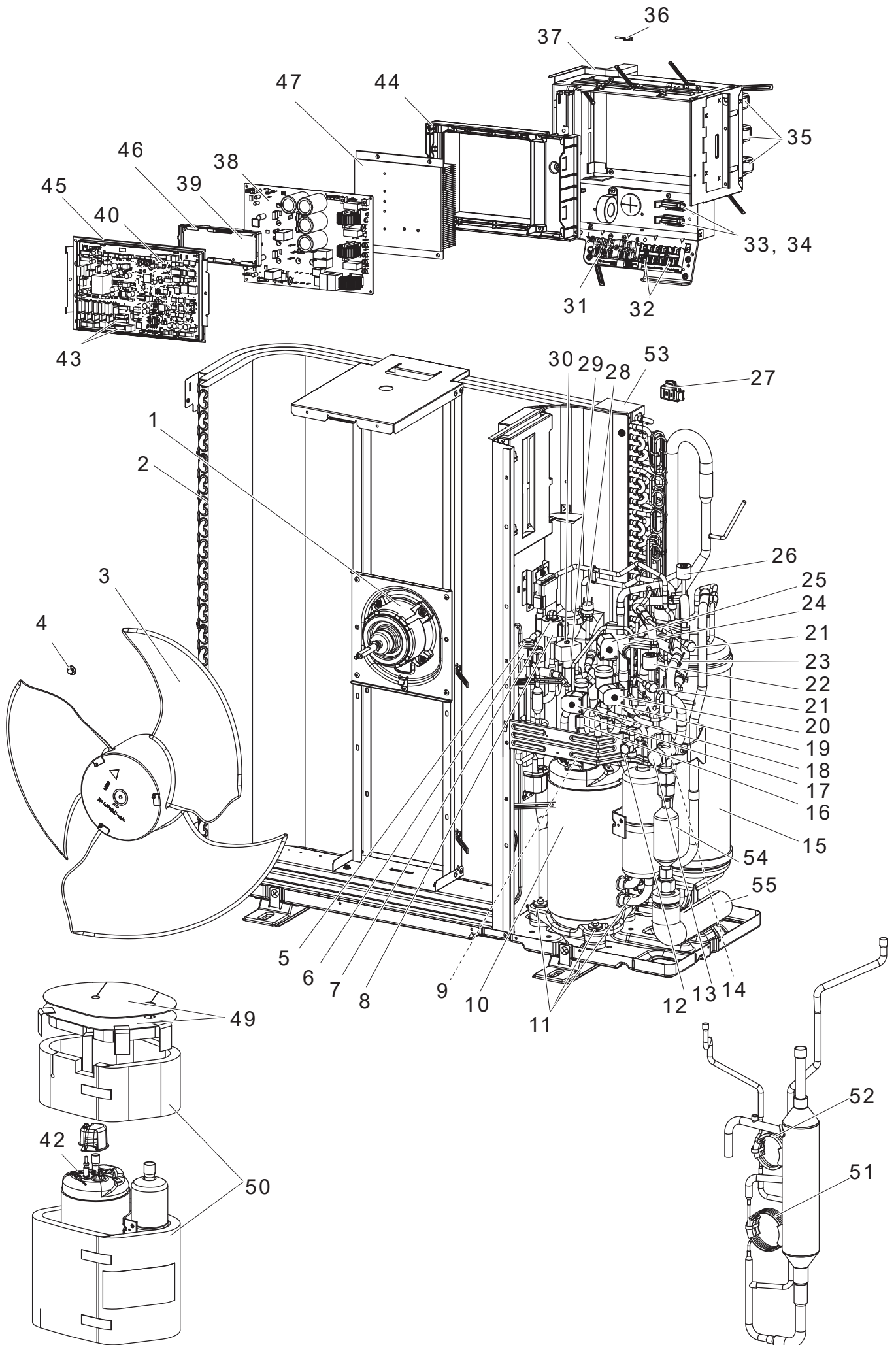


1. The part quantity below indicates the required number of pieces per unit.
2. The circled No. indicates that the part is not shown in the figure.

No.	Parts No.	Parts Name	PUMY-SM112VKM.TH	PUMY-SM112VKM-ET.TH	PUMY-SM125VKM.TH	PUMY-SM125VKM-ET.TH	PUMY-SM140VKM.TH	PUMY-SM140VKM-ET.TH	Wiring Diagram Symbol	Remarks [Drawing No.]
1	E 2 7 F 0 3 3 0 1	OUTDOOR FAN MOTOR	1	1	1	1	1	1	MF1	
2	E 2 7 H 9 3 6 3 0	OUTDOOR HEAT EXCHANGER	1	1	1	1	1	1		
3	E 2 7 9 4 2 5 0 1	PROPELLER FAN	1	1	1	1	1	1		
4	E 2 7 A 1 5 5 0 8	PROPELLER FAN NUT	1	1	1	1	1	1		
5	E 2 7 3 3 U 6 4 0	LINEAR EXPANSION VALVE	1	1	1	1	1	1	(LEV-B)	
6	E 2 7 F 0 3 4 9 3	LINEAR EXPANSION VALVE COIL	1	1	1	1	1	1	LEV-B	RD, FAM type
7	E 2 7 9 4 2 6 4 0	LINEAR EXPANSION VALVE	1	1	1	1	1	1	(LEV-A)	
8	E 2 7 H 9 3 4 9 3	LINEAR EXPANSION VALVE COIL	1	1	1	1	1	1	LEV-A	WH, UKV type
9	E 2 7 F 0 3 3 0 7	THERMISTOR	1	1	1	1	1	1	TH4	
10	E 2 7 3 3 U 9 0 0	COMPRESSOR	1	1	1	1	1	1	MC	MVB36FNBMC
11	E 2 2 2 6 7 5 0 6	COMPRESSOR RUBBER MOUNT	3	3	3	3	3	3		3 pcs/set
12	E 2 7 9 4 2 6 6 1	STOP VALVE 3/8F	1	1	1	1	1	1		
13	E 2 7 F 0 3 6 6 1	STOP VALVE 5/8F	1	1	1	1	1	1		
14	E 2 7 F 0 3 2 9 9	OIL SEPARATOR	1	1	1	1	1	1		
15	E 2 7 3 3 U 9 3 2	ACCUMULATOR	1	1	1	1	1	1		
16	E 2 7 F 0 4 3 0 7	THERMISTOR (HIC)	1	1	1	1	1	1	TH2	
17	E 2 7 3 3 U 4 9 2	SOLENOID VALVE	1	1	1	1	1	1	(SV2)	
18	E 2 7 3 3 U 4 9 0	SOLENOID VAVLE COIL	1	1	1	1	1	1	SV2	BU
19	E 2 7 3 4 U 4 9 2	SOLENOID VALVE	1	1	1	1	1	1	(SV3)	
20	E 2 7 3 4 U 4 9 0	SOLENOID VAVLE COIL	1	1	1	1	1	1	SV3	BK
21	E 2 7 9 4 2 6 4 1	CHARGE PLUG	2	2	2	2	2	2		
22	E 2 7 F 0 3 6 4 7	LOW PRESSURE SENSOR	1	1	1	1	1	1	63LS	
23	E 2 7 F 0 5 3 0 7	THERMISTOR	1	1	1	1	1	1	TH6, TH7	Combined type
24	E 2 7 3 3 U 9 6 1	4-WAY VALVE	1	1	1	1	1	1		
25	E 2 7 H 9 3 4 9 0	R.V. COIL	1	1	1	1	1	1	21S4	GN
26	E 2 7 F 0 3 6 4 6	HIGH PRESSURE SENSOR	1	1	1	1	1	1	63HS	
27	—	SENSOR HOLDER	1	1	1	1	1	1	for TH7(Ambient)	[BK25N082G05]
28	E 2 7 9 4 2 6 4 6	HIGH PRESSURE SWITCH	1	1	1	1	1	1	63H	
29	E 2 7 F 0 3 4 9 2	SOLENOID VALVE	1	1	1	1	1	1	(SV1)	
30	E 2 7 A 1 6 4 9 0	SOLENOID VALVE COIL	1	1	1	1	1	1	SV1	GY
31	E 2 7 3 3 U 3 7 4	TERMINAL BLOCK	1	1	1	1	1	1	TB1	
32	E 2 7 7 0 4 3 7 5	TERMINAL BLOCK	2	2	2	2	2	2	TB3, TB7	
33	E 2 2 7 3 5 3 8 2	FUSE	2	2	2	2	2	2	FUSE1, FUSE2	T20AL250V
34	E 2 2 7 3 5 2 4 1	FUSE HOLDER	2	2	2	2	2	2		
35	E 2 7 E 4 5 3 3 7	REACTOR	3	3	3	3	3	3	DCL1, DCL2, DCL3	
36	E 2 7 E 4 5 3 0 7	THERMISTOR	1	1	1	1	1	1	TH8	
37	—	ELECTRICAL PARTS BOX	1	1	1	1	1	1		[BK00N051G53]
38	E 2 7 3 3 U 4 4 0	POWER BOARD	1	1	1	1	1	1	P.B.	
39	E 2 7 5 6 P 4 5 6	M-NET POWER BOARD	1	1	1	1	1	1	M-NET P.B.	
40	E 2 7 8 8 M 4 5 0	OUTDOOR CONTROL P.C. BOARD	1	1	1	1	1	1	MULTI.B.	
41	E 2 7 9 4 4 3 0 7	THERMISTOR	1	1	1	1	1	1	TH3	
42	E 2 7 3 3 U 3 8 1	THERMAL PROTECTOR	1	1	1	1	1	1	TRS	
43	E 2 7 6 4 8 3 8 2	FUSE	2	2	2	2	2	2	F1, F2	T6.3AL250V
44	—	BOARD CASE POWER	1	1	1	1	1	1		[RK00C783G02]
45	—	BOARD CASE CONT	1	1	1	1	1	1		[RK25N611G01]
46	—	BOARD CASE M-NET	1	1	1	1	1	1		[BK25N050G03]
47	—	HEAT SINK	1	1	1	1	1	1		[BK11N530H02]
48	—	LEAD ASSY COMP	1	1	1	1	1	1		[RG78F110G01]
49	—	COMP FELT(TOP)	1	1	1	1	1	1		[RK33V679H01]
50	—	COMP FELT(BODY)	1	1	1	1	1	1		[RK33C427H04]
51	E 2 7 3 3 U 9 3 6	CAPILLARY TUBE	1	1	1	1	1	1	2.5*0.6*1000	
52	E 2 7 3 4 U 9 3 6	CAPILLARY TUBE	1	1	1	1	1	1	3.0*1.2*480	
53	E 2 7 L 6 7 5 3 0	HEX TOP CUSHION SET	1	1	1	1	1	1		
54	E 2 7 3 3 U 8 9 0	ACCESSORY MUFFLER	1	1	1	1	1	1		
55	E 2 7 3 4 U 8 9 0	ACCESSORY PIPE	1	1	1	1	1	1		

PUMY-SM112VKM-BS.TH
PUMY-SM125VKM-BS.TH
PUMY-SM140VKM-BS.TH

PUMY-SM112VKM-ET-BS.TH
PUMY-SM125VKM-ET-BS.TH
PUMY-SM140VKM-ET-BS.TH

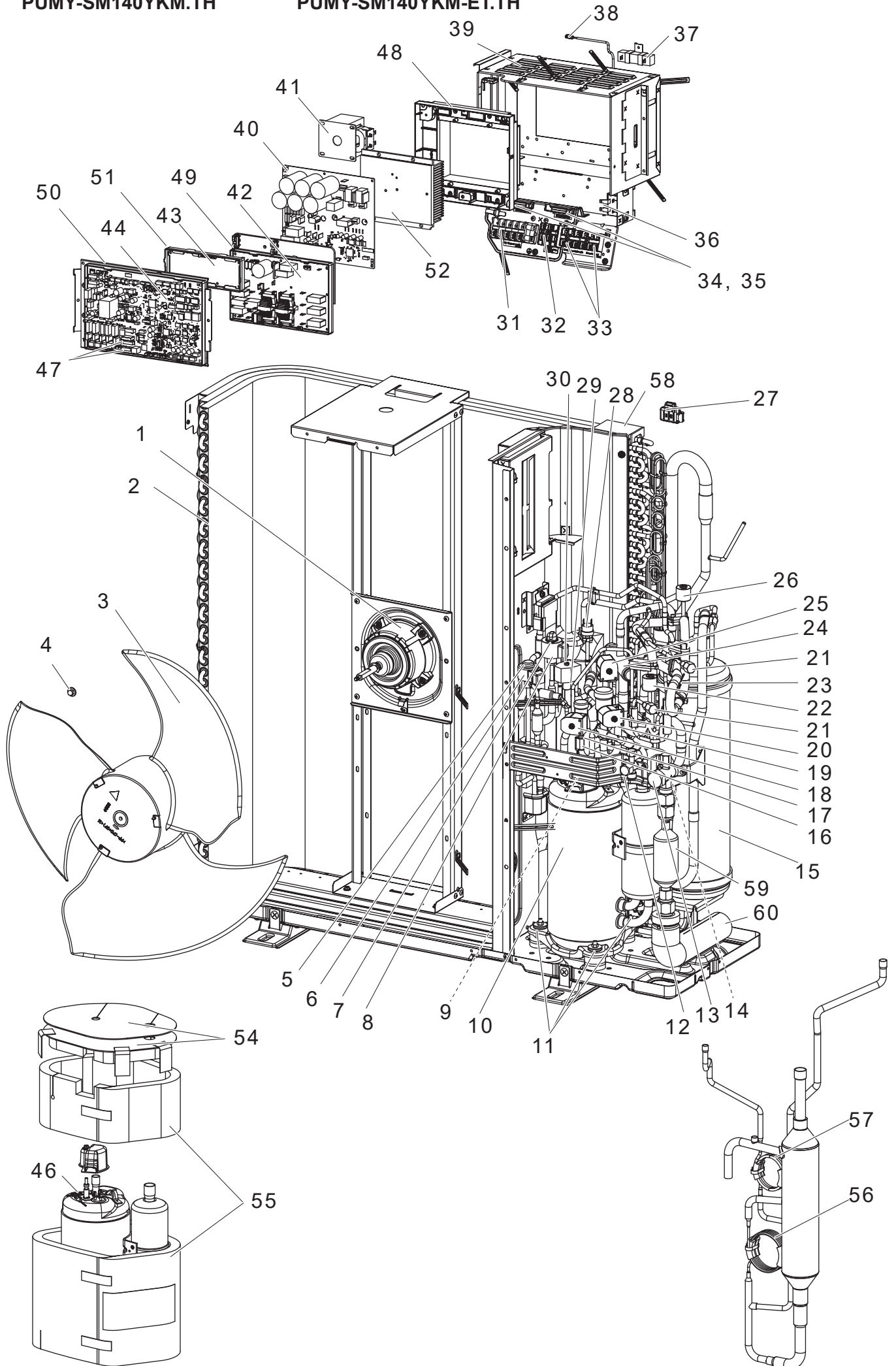


1. The part quantity below indicates the required number of pieces per unit.
2. The circled No. indicates that the part is not shown in the figure.

No.	Parts No.	Parts Name	PUMY-SM112VKM-BS.TH	PUMY-SM112VKM-ET-BS.TH	PUMY-SM125VKM-BS.TH	PUMY-SM125VKM-ET-BS.TH	PUMY-SM140VKM-BS.TH	PUMY-SM140VKM-ET-BS.TH	Wiring Diagram Symbol	Remarks [Drawing No.]
1	E 2 7 F 0 3 3 0 1	OUTDOOR FAN MOTOR	1	1	1	1	1	1	MF1	
2	E 2 7 H 9 3 6 3 0	OUTDOOR HEAT EXCHANGER	1	1	1	1	1	1		
3	E 2 7 9 4 2 5 0 1	PROPELLER FAN	1	1	1	1	1	1		
4	E 2 7 A 1 5 5 0 8	PROPELLER FAN NUT	1	1	1	1	1	1		
5	E 2 7 3 3 U 6 4 0	LINEAR EXPANSION VALVE	1	1	1	1	1	1	(LEV-B)	
6	E 2 7 F 0 3 4 9 3	LINEAR EXPANSION VALVE COIL	1	1	1	1	1	1	LEV-B	RD, FAM type
7	E 2 7 9 4 2 6 4 0	LINEAR EXPANSION VALVE	1	1	1	1	1	1	(LEV-A)	
8	E 2 7 H 9 3 4 9 3	LINEAR EXPANSION VALVE COIL	1	1	1	1	1	1	LEV-A	WH, UKV type
9	E 2 7 F 0 3 3 0 7	THERMISTOR	1	1	1	1	1	1	TH4	
10	E 2 7 3 3 U 9 0 0	COMPRESSOR	1	1	1	1	1	1	MC	MVB36FNBMCM
11	E 2 2 2 6 7 5 0 6	COMPRESSOR RUBBER MOUNT	3	3	3	3	3	3		3 pcs/set
12	E 2 7 9 4 2 6 6 1	STOP VALVE 3/8F	1	1	1	1	1	1		
13	E 2 7 F 0 3 6 6 1	STOP VALVE 5/8F	1	1	1	1	1	1		
14	E 2 7 F 0 3 2 9 9	OIL SEPARATOR	1	1	1	1	1	1		
15	E 2 7 3 3 U 9 3 2	ACCUMULATOR	1	1	1	1	1	1		
16	E 2 7 F 0 4 3 0 7	THERMISTOR (HIC)	1	1	1	1	1	1	TH2	
17	E 2 7 3 3 U 4 9 2	SOLENOID VALVE	1	1	1	1	1	1	(SV2)	
18	E 2 7 3 3 U 4 9 0	SOLENOID VALVE COIL	1	1	1	1	1	1	SV2	BU
19	E 2 7 3 4 U 4 9 2	SOLENOID VALVE	1	1	1	1	1	1	(SV3)	
20	E 2 7 3 4 U 4 9 0	SOLENOID VALVE COIL	1	1	1	1	1	1	SV3	BK
21	E 2 7 9 4 2 6 4 1	CHARGE PLUG	2	2	2	2	2	2		
22	E 2 7 F 0 3 6 4 7	LOW PRESSURE SENSOR	1	1	1	1	1	1	63LS	
23	E 2 7 F 0 5 3 0 7	THERMISTOR	1	1	1	1	1	1	TH6, TH7	Combined type
24	E 2 7 3 3 U 9 6 1	4-WAY VALVE	1	1	1	1	1	1		
25	E 2 7 H 9 3 4 9 0	R.V. COIL	1	1	1	1	1	1	21S4	GN
26	E 2 7 F 0 3 6 4 6	HIGH PRESSURE SENSOR	1	1	1	1	1	1	63HS	
27	—	SENSOR HOLDER	1	1	1	1	1	1	for TH7(Ambient)	[BK25N082G05]
28	E 2 7 9 4 2 6 4 6	HIGH PRESSURE SWITCH	1	1	1	1	1	1	63H	
29	E 2 7 F 0 3 4 9 2	SOLENOID VALVE	1	1	1	1	1	1	(SV1)	
30	E 2 7 A 1 6 4 9 0	SOLENOID VALVE COIL	1	1	1	1	1	1	SV1	GY
31	E 2 7 3 3 U 3 7 4	TERMINAL BLOCK	1	1	1	1	1	1	TB1	
32	E 2 7 7 0 4 3 7 5	TERMINAL BLOCK	2	2	2	2	2	2	TB3, TB7	
33	E 2 2 7 3 5 3 8 2	FUSE	2	2	2	2	2	2	FUSE1, FUSE2	T20AL250V
34	E 2 2 7 3 5 2 4 1	FUSE HOLDER	2	2	2	2	2	2		
35	E 2 7 E 4 5 3 3 7	REACTOR	3	3	3	3	3	3	DCL1, DCL2, DCL3	
36	E 2 7 E 4 5 3 0 7	THERMISTOR	1	1	1	1	1	1	TH8	
37	—	ELECTRICAL PARTS BOX	1	1	1	1	1	1		[BK00N051G53]
38	E 2 7 3 3 U 4 4 0	POWER BOARD	1	1	1	1	1	1	P.B.	
39	E 2 7 5 6 P 4 5 6	M-NET POWER BOARD	1	1	1	1	1	1	M-NET P.B.	
40	E 2 7 8 8 M 4 5 0	OUTDOOR CONTROL P.C. BOARD	1	1	1	1	1	1	MULTI.B.	
41	E 2 7 9 4 4 3 0 7	THERMISTOR	1	1	1	1	1	1	TH3	
42	E 2 7 3 3 U 3 8 1	THERMAL PROTECTOR	1	1	1	1	1	1	TRS	
43	E 2 7 6 4 8 3 8 2	FUSE	2	2	2	2	2	2	F1, F2	T6.3AL250V
44	—	BOARD CASE POWER	1	1	1	1	1	1		[RK00C783G02]
45	—	BOARD CASE CONT	1	1	1	1	1	1		[RK25N611G01]
46	—	BOARD CASE M-NET	1	1	1	1	1	1		[BK25N050G03]
47	—	HEAT SINK	1	1	1	1	1	1		[BK11N530H02]
48	—	LEAD ASSY COMP	1	1	1	1	1	1		[RG78F110G01]
49	—	COMP FELT(TOP)	1	1	1	1	1	1		[RK33V679H01]
50	—	COMP FELT(BODY)	1	1	1	1	1	1		[RK33C427H04]
51	E 2 7 3 3 U 9 3 6	CAPILLARY TUBE	1	1	1	1	1	1	2.5*0.6*1000	
52	E 2 7 3 4 U 9 3 6	CAPILLARY TUBE	1	1	1	1	1	1	3.0*1.2*480	
53	E 2 7 L 6 7 5 3 0	HEX TOP CUSHION SET	1	1	1	1	1	1		
54	E 2 7 3 3 U 8 9 0	ACCESSORY MUFFLER	1	1	1	1	1	1		
55	E 2 7 3 4 U 8 9 0	ACCESSORY PIPE	1	1	1	1	1	1		

PUMY-SM112YKM.TH
PUMY-SM125YKM.TH
PUMY-SM140YKM.TH

PUMY-SM112YKM-ET.TH
PUMY-SM125YKM-ET.TH
PUMY-SM140YKM-ET.TH

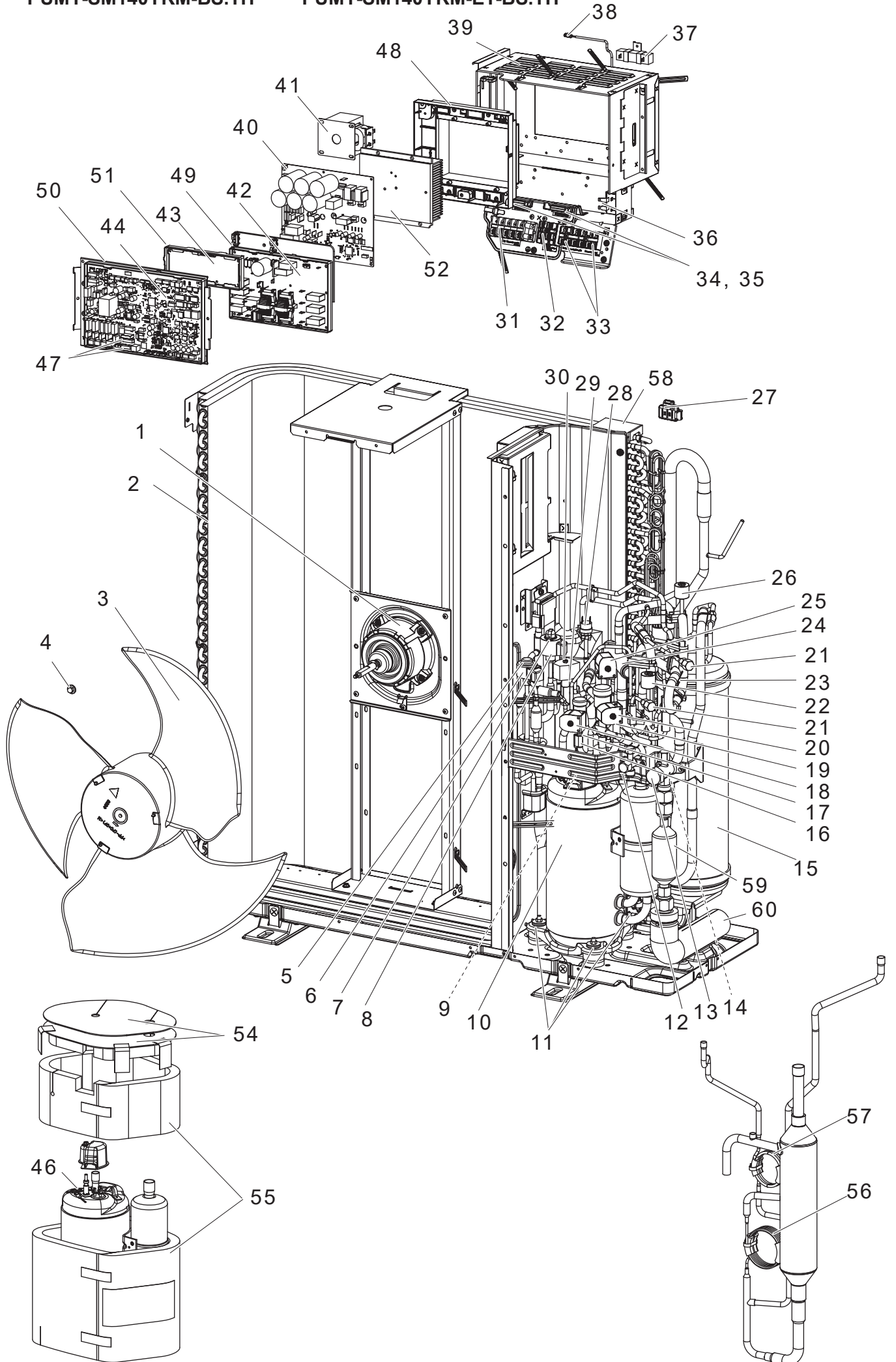


1. The part quantity below indicates the required number of pieces per unit.
2. The circled No. indicates that the part is not shown in the figure.

No.	Parts No.	Parts Name	PJMY-SM112YKM.TH	PJMY-SM112YKM-ET.TH	PJMY-SM125YKM.TH	PJMY-SM125YKM-ET.TH	PJMY-SM140YKM.TH	PJMY-SM140YKM-ET.TH	Wiring Diagram Symbol	Remarks [Drawing No.]
1	E 2 7 F 0 3 3 0 1	OUTDOOR FAN MOTOR	1	1	1	1	1	1	MF1	
2	E 2 7 H 9 3 6 3 0	OUTDOOR HEAT EXCHANGER	1	1	1	1	1	1		
3	E 2 7 9 4 2 5 0 1	PROPELLER FAN	1	1	1	1	1	1		
4	E 2 7 A 1 5 5 0 8	PROPELLER FAN NUT	1	1	1	1	1	1		
5	E 2 7 3 3 U 6 4 0	LINEAR EXPANSION VALVE	1	1	1	1	1	1	(LEV-B)	
6	E 2 7 F 0 3 4 9 3	LINEAR EXPANSION VALVE COIL	1	1	1	1	1	1	LEV-B	RD, FAM type
7	E 2 7 9 4 2 6 4 0	LINEAR EXPANSION VALVE	1	1	1	1	1	1	(LEV-A)	
8	E 2 7 H 9 3 4 9 3	LINEAR EXPANSION VALVE COIL	1	1	1	1	1	1	LEV-A	WH, UKV type
9	E 2 7 F 0 3 3 0 7	THERMISTOR	1	1	1	1	1	1	TH4	
10	E 2 7 3 7 U 9 0 0	COMPRESSOR	1	1	1	1	1	1	MC	MVB36FNDC
11	E 2 2 2 6 7 5 0 6	COMPRESSOR RUBBER MOUNT	3	3	3	3	3	3		3 pcs/set
12	E 2 7 9 4 2 6 6 1	STOP VALVE 3/8F	1	1	1	1	1	1		
13	E 2 7 F 0 3 6 6 1	STOP VALVE 5/8F	1	1	1	1	1	1		
14	E 2 7 F 0 3 2 9 9	OIL SEPARATOR	1	1	1	1	1	1		
15	E 2 7 3 3 U 9 3 2	ACCUMULATOR	1	1	1	1	1	1		
16	E 2 7 F 0 4 3 0 7	THERMISTOR (HIC)	1	1	1	1	1	1	TH2	
17	E 2 7 3 3 U 4 9 2	SOLENOID VALVE	1	1	1	1	1	1	(SV2)	
18	E 2 7 3 3 U 4 9 0	SOLENOID VAVLE COIL	1	1	1	1	1	1	SV2	BU
19	E 2 7 3 4 U 4 9 2	SOLENOID VALVE	1	1	1	1	1	1	(SV3)	
20	E 2 7 3 4 U 4 9 0	SOLENOID VAVLE COIL	1	1	1	1	1	1	SV3	BK
21	E 2 7 9 4 2 6 4 1	CHARGE PLUG	2	2	2	2	2	2		
22	E 2 7 F 0 3 6 4 7	LOW PRESSURE SENSOR	1	1	1	1	1	1	63LS	
23	E 2 7 F 0 5 3 0 7	THERMISTOR	1	1	1	1	1	1	TH6, TH7	Combined type
24	E 2 7 3 3 U 9 6 1	4-WAY VALVE	1	1	1	1	1	1		
25	E 2 7 H 9 3 4 9 0	R.V. COIL	1	1	1	1	1	1	21S4	GN
26	E 2 7 F 0 3 6 4 6	HIGH PRESSURE SENSOR	1	1	1	1	1	1	63HS	
27	—	SENSOR HOLDER	1	1	1	1	1	1	for TH7(Ambient)	[BK25N082G05]
28	E 2 7 9 4 2 6 4 6	HIGH PRESSURE SWITCH	1	1	1	1	1	1	63H	
29	E 2 7 F 0 3 4 9 2	SOLENOID VALVE	1	1	1	1	1	1	(SV1)	
30	E 2 7 A 1 6 4 9 0	SOLENOID VALVE COIL	1	1	1	1	1	1	SV1	GY
31	E 2 7 9 4 3 3 7 4	TERMINAL BLOCK	1	1	1	1	1	1	TB1	
32	E 2 7 3 7 U 3 7 4	TERMINAL BLOCK	1	1	1	1	1	1	TB1B	
33	E 2 7 7 0 4 3 7 5	TERMINAL BLOCK	2	2	2	2	2	2	TB3, TB7	
34	E 2 2 7 3 5 3 8 2	FUSE	2	2	2	2	2	2	FUSE1, FUSE2	T20AL250V
35	E 2 2 7 3 5 2 4 1	FUSE HOLDER	2	2	2	2	2	2		
36	E 2 7 9 4 5 3 3 7	REACTOR	1	1	1	1	1	1	ACL4	
37	E 2 7 E 3 3 3 6 0	RESISTOR	1	1	1	1	1	1	RS	
38	E 2 7 E 3 5 3 0 7	THERMISTOR	1	1	1	1	1	1	TH8	
39	—	ELECTRICAL PARTS BOX	1	1	1	1	1	1		[BK00N051G78]
40	E 2 7 3 9 U 4 4 0	POWER BOARD	1	1	1	1	1	1	P.B.	
41	E 2 7 Y 9 4 3 3 7	REACTOR	1	1	1	1	1	1	DCL	
42	E 2 7 3 9 U 4 4 4	NOISE FILTER P.C. BOARD	1	1	1	1	1	1	N.F.	
43	E 2 7 5 6 P 4 5 6	M-NET POWER BOARD	1	1	1	1	1	1	M-NET P.B.	
44	E 2 7 8 8 M 4 5 0	OUTDOOR CONTROL P.C. BOARD	1	1	1	1	1	1	MULTI.B.	
④5	E 2 7 9 4 4 3 0 7	THERMISTOR	1	1	1	1	1	1	TH3	
46	E 2 7 3 3 U 3 8 1	THERMAL PROTECTOR	1	1	1	1	1	1	TRS	
47	E 2 7 6 4 8 3 8 2	FUSE	2	2	2	2	2	2	F1, F2	T6.3AL250V
48	—	BOARD CASE POWER	1	1	1	1	1	1		[VK25A155G02]
49	—	BOARD CASE NF	1	1	1	1	1	1		[BK25N049G04]
50	—	BOARD CASE CONT	1	1	1	1	1	1		[RK25N611G01]
51	—	BOARD CASE M-NET	1	1	1	1	1	1		[BK25N050G03]
52	—	HEAT SINK	1	1	1	1	1	1		[DY21B385H11]
⑤3	—	LEAD ASSY COMP	1	1	1	1	1	1		[RG78F122G03]
54	—	COMP FELT(TOP)	1	1	1	1	1	1		[RK33V679H01]
55	—	COMP FELT(BODY)	1	1	1	1	1	1		[RK33C427H04]
56	E 2 7 3 3 U 9 3 6	CAPILLARY TUBE	1	1	1	1	1	1	2.5*0.6*1000	
57	E 2 7 3 4 U 9 3 6	CAPILLARY TUBE	1	1	1	1	1	1	3.0*1.2*480	
58	E 2 7 L 6 7 5 3 0	HEX TOP CUSHION SET	1	1	1	1	1	1		
59	E 2 7 3 3 U 8 9 0	ACCESSORY MUFFLER	1	1	1	1	1	1		
60	E 2 7 3 4 U 8 9 0	ACCESSORY PIPE	1	1	1	1	1	1		

PUMY-SM112YKM-BS.TH
 PUMY-SM125YKM-BS.TH
 PUMY-SM140YKM-BS.TH

PUMY-SM112YKM-ET-BS.TH
 PUMY-SM125YKM-ET-BS.TH
 PUMY-SM140YKM-ET-BS.TH



1. The part quantity below indicates the required number of pieces per unit.
2. The circled No. indicates that the part is not shown in the figure.

No.	Parts No.	Parts Name	PUMY-SM112YKM-BS.TH	PUMY-SM112YKM-ET-BS.TH	PUMY-SM125YKM-BS.TH	PUMY-SM125YKM-ET-BS.TH	PUMY-SM140YKM-BS.TH	PUMY-SM140YKM-ET-BS.TH	Wiring Diagram Symbol	Remarks [Drawing No.]
1	E 2 7 F 0 3 3 0 1	OUTDOOR FAN MOTOR	1	1	1	1	1	1	MF1	
2	E 2 7 H 9 3 6 3 0	OUTDOOR HEAT EXCHANGER	1	1	1	1	1	1		
3	E 2 7 9 4 2 5 0 1	PROPELLER FAN	1	1	1	1	1	1		
4	E 2 7 A 1 5 5 0 8	PROPELLER FAN NUT	1	1	1	1	1	1		
5	E 2 7 3 3 U 6 4 0	LINEAR EXPANSION VALVE	1	1	1	1	1	1	(LEV-B)	
6	E 2 7 F 0 3 4 9 3	LINEAR EXPANSION VALVE COIL	1	1	1	1	1	1	LEV-B	RD, FAM type
7	E 2 7 9 4 2 6 4 0	LINEAR EXPANSION VALVE	1	1	1	1	1	1	(LEV-A)	
8	E 2 7 H 9 3 4 9 3	LINEAR EXPANSION VALVE COIL	1	1	1	1	1	1	LEV-A	WH, UKV type
9	E 2 7 F 0 3 3 0 7	THERMISTOR	1	1	1	1	1	1	TH4	
10	E 2 7 3 7 U 9 0 0	COMPRESSOR	1	1	1	1	1	1	MC	MVB36FNDMC
11	E 2 2 2 6 7 5 0 6	COMPRESSOR RUBBER MOUNT	3	3	3	3	3	3		3 pcs/set
12	E 2 7 9 4 2 6 6 1	STOP VALVE 3/8F	1	1	1	1	1	1		
13	E 2 7 F 0 3 6 6 1	STOP VALVE 5/8F	1	1	1	1	1	1		
14	E 2 7 F 0 3 2 9 9	OIL SEPARATOR	1	1	1	1	1	1		
15	E 2 7 3 3 U 9 3 2	ACCUMULATOR	1	1	1	1	1	1		
16	E 2 7 F 0 4 3 0 7	THERMISTOR (HIC)	1	1	1	1	1	1	TH2	
17	E 2 7 3 3 U 4 9 2	SOLENOID VALVE	1	1	1	1	1	1	(SV2)	
18	E 2 7 3 3 U 4 9 0	SOLENOID VALVE COIL	1	1	1	1	1	1	SV2	BU
19	E 2 7 3 4 U 4 9 2	SOLENOID VALVE	1	1	1	1	1	1	(SV3)	
20	E 2 7 3 4 U 4 9 0	SOLENOID VALVE COIL	1	1	1	1	1	1	SV3	BK
21	E 2 7 9 4 2 6 4 1	CHARGE PLUG	2	2	2	2	2	2		
22	E 2 7 F 0 3 6 4 7	LOW PRESSURE SENSOR	1	1	1	1	1	1	63LS	
23	E 2 7 F 0 5 3 0 7	THERMISTOR	1	1	1	1	1	1	TH6, TH7	Combined type
24	E 2 7 3 3 U 9 6 1	4-WAY VALVE	1	1	1	1	1	1		
25	E 2 7 H 9 3 4 9 0	R.V. COIL	1	1	1	1	1	1	21S4	GN
26	E 2 7 F 0 3 6 4 6	HIGH PRESSURE SENSOR	1	1	1	1	1	1	63HS	
27	—	SENSOR HOLDER	1	1	1	1	1	1	for TH7(Ambient)	[BK25N082G05]
28	E 2 7 9 4 2 6 4 6	HIGH PRESSURE SWITCH	1	1	1	1	1	1	63H	
29	E 2 7 F 0 3 4 9 2	SOLENOID VALVE	1	1	1	1	1	1	(SV1)	
30	E 2 7 A 1 6 4 9 0	SOLENOID VALVE COIL	1	1	1	1	1	1	SV1	GY
31	E 2 7 9 4 3 3 7 4	TERMINAL BLOCK	1	1	1	1	1	1	TB1	
32	E 2 7 3 7 U 3 7 4	TERMINAL BLOCK	1	1	1	1	1	1	TB1B	
33	E 2 7 7 0 4 3 7 5	TERMINAL BLOCK	2	2	2	2	2	2	TB3, TB7	
34	E 2 2 7 3 5 3 8 2	FUSE	2	2	2	2	2	2	FUSE1, FUSE2	T20AL250V
35	E 2 2 7 3 5 2 4 1	FUSE HOLDER	2	2	2	2	2	2		
36	E 2 7 9 4 5 3 3 7	REACTOR	1	1	1	1	1	1	ACL4	
37	E 2 7 E 3 3 3 6 0	RESISTOR	1	1	1	1	1	1	RS	
38	E 2 7 E 3 5 3 0 7	THERMISTOR	1	1	1	1	1	1	TH8	
39	—	ELECTRICAL PARTS BOX	1	1	1	1	1	1		[BK00N051G78]
40	E 2 7 3 9 U 4 4 0	POWER BOARD	1	1	1	1	1	1	P.B.	
41	E 2 7 Y 9 4 3 3 7	REACTOR	1	1	1	1	1	1	DCL	
42	E 2 7 3 9 U 4 4 4	NOISE FILTER P.C. BOARD	1	1	1	1	1	1	N.F.	
43	E 2 7 5 6 P 4 5 6	M-NET POWER BOARD	1	1	1	1	1	1	M-NET P.B.	
44	E 2 7 8 8 M 4 5 0	OUTDOOR CONTROL P.C. BOARD	1	1	1	1	1	1	MULTI.B.	
45	E 2 7 9 4 4 3 0 7	THERMISTOR	1	1	1	1	1	1	TH3	
46	E 2 7 3 3 U 3 8 1	THERMAL PROTECTOR	1	1	1	1	1	1	TRS	
47	E 2 7 6 4 8 3 8 2	FUSE	2	2	2	2	2	2	F1, F2	T6.3AL250V
48	—	BOARD CASE POWER	1	1	1	1	1	1		[VK25A155G02]
49	—	BOARD CASE NF	1	1	1	1	1	1		[BK25N049G04]
50	—	BOARD CASE CONT	1	1	1	1	1	1		[RK25N611G01]
51	—	BOARD CASE M-NET	1	1	1	1	1	1		[BK25N050G03]
52	—	HEAT SINK	1	1	1	1	1	1		[DY21B385H11]
53	—	LEAD ASSY COMP	1	1	1	1	1	1		[RG78F122G03]
54	—	COMP FELT(TOP)	1	1	1	1	1	1		[RK33V679H01]
55	—	COMP FELT(BODY)	1	1	1	1	1	1		[RK33C427H04]
56	E 2 7 3 3 U 9 3 6	CAPILLARY TUBE	1	1	1	1	1	1	2.5*0.6*1000	
57	E 2 7 3 4 U 9 3 6	CAPILLARY TUBE	1	1	1	1	1	1	3.0*1.2*480	
58	E 2 7 L 6 7 5 3 0	HEX TOP CUSHION SET	1	1	1	1	1	1		
59	E 2 7 3 3 U 8 9 0	ACCESSORY MUFFLER	1	1	1	1	1	1		
60	E 2 7 3 4 U 8 9 0	ACCESSORY PIPE	1	1	1	1	1	1		

3 OPTIONAL PARTS

3-1. FOR OUTDOOR UNIT

Parts name	Parts No.
DRAIN SOCKET	PAC-SG61DS-E
AIR OUTLET GUIDE	PAC-SH96SG-E
AIR PROTECT GUIDE	PAC-SH95AG-E
DRAIN PAN	PAC-SH97DP-E
2 BRANCH PIPE (Joint)	CMY-Y62-G-E
4 BRANCH PIPE (Joint)	CMY-Y64-G-E
8 BRANCH PIPE (Joint)	CMY-Y68-G-E
2 BRANCH PIPE (Joint) (In case of using 2-branch boxes)*2	MSDD-50AR2-E (Flare) MSDD-50BR-E (Brazing)
BRANCH BOX	PAC-MMK40BC (Flare)
	PAC-MMK60BC (Flare)
	PAC-MMK40BCB (Brazing)
BASE HEATER	PAC-SJ10BH-E

3-2. FOR BRANCH BOX

Parts name	Parts No.
SENSOR AND ALARM KIT	PAC-SK60SA-E

DIFFERENT-DIAMETER JOINT

Different-diameter joint (optional parts) (Fig. 2-1)

Model name	Joint type	Connected pipes diameter	Diameter A	Diameter B
		mm	mm	mm
PAC-SJ88RJ-E	Flare	ø9.52 → ø12.7	ø9.52	ø12.7
PAC-SK88RJ-E		ø12.7 → ø9.52	ø12.7	ø9.52
PAC-SK89RJ-E		ø12.7 → ø15.88	ø12.7	ø15.88
PAC-SJ87RJ-E		ø6.35 → ø9.52	ø6.35	ø9.52
PAC-SK90RJ-E		ø9.52 → ø15.88	ø9.52	ø15.88
PAC-SG78RJB-E	Brazing	ø9.52 → ø12.7	ø9.52	ø12.7
PAC-SG79RJB-E		ø12.7 → ø9.52	ø12.7	ø9.52
PAC-SG80RJB-E		ø12.7 → ø15.88	ø12.7	ø15.88
PAC-SG77RJB-E		ø6.35 → ø9.52	ø6.35	ø9.52
PAC-SG76RJB-E		ø9.52 → ø15.88	ø9.52	ø15.88

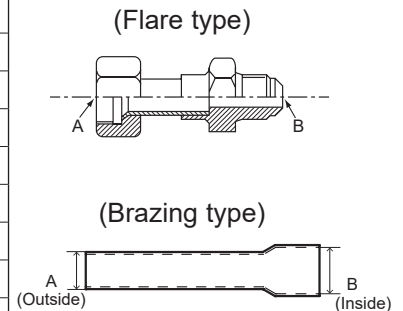


Fig. 2-1

Conversion formula	
1/4 in	ø6.35 mm
3/8 in	ø9.52 mm
1/2 in	ø12.7 mm
5/8 in	ø15.88 mm
3/4 in	ø19.05 mm

MITSUBISHI ELECTRIC CORPORATION

HEAD OFFICE: TOKYO BUILDING, 2-7-3, MARUNOUCHI, CHIYODA-KU, TOKYO 100-8310, JAPAN