

SERVICE PARTS LIST FOR MITSUBISHI ELECTRIC PACKAGED AIR-CONDITIONERS

Series : PUHY-M•YNW-A1(-BS)

For use with the R32

REVISED

Oct. 2020

BWE01850B

INDEX

PUHY-M200YNW-A1(-BS)

PUHY-M250YNW-A1(-BS)

PUHY-M300YNW-A1(-BS)

PUHY-M350YNW-A1(-BS)

PUHY-M400YNW-A1(-BS)

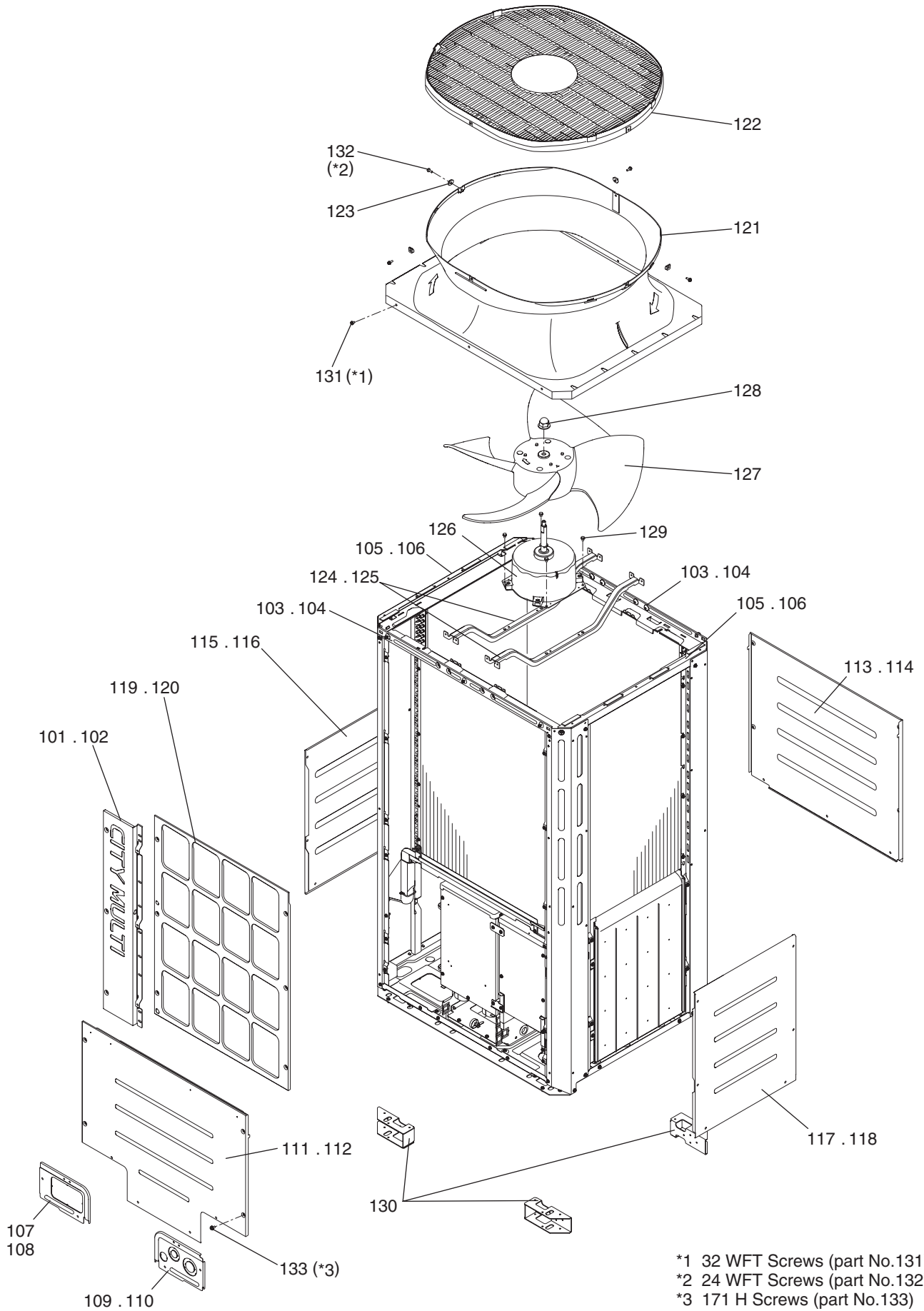
PUHY-M450YNW-A1(-BS)

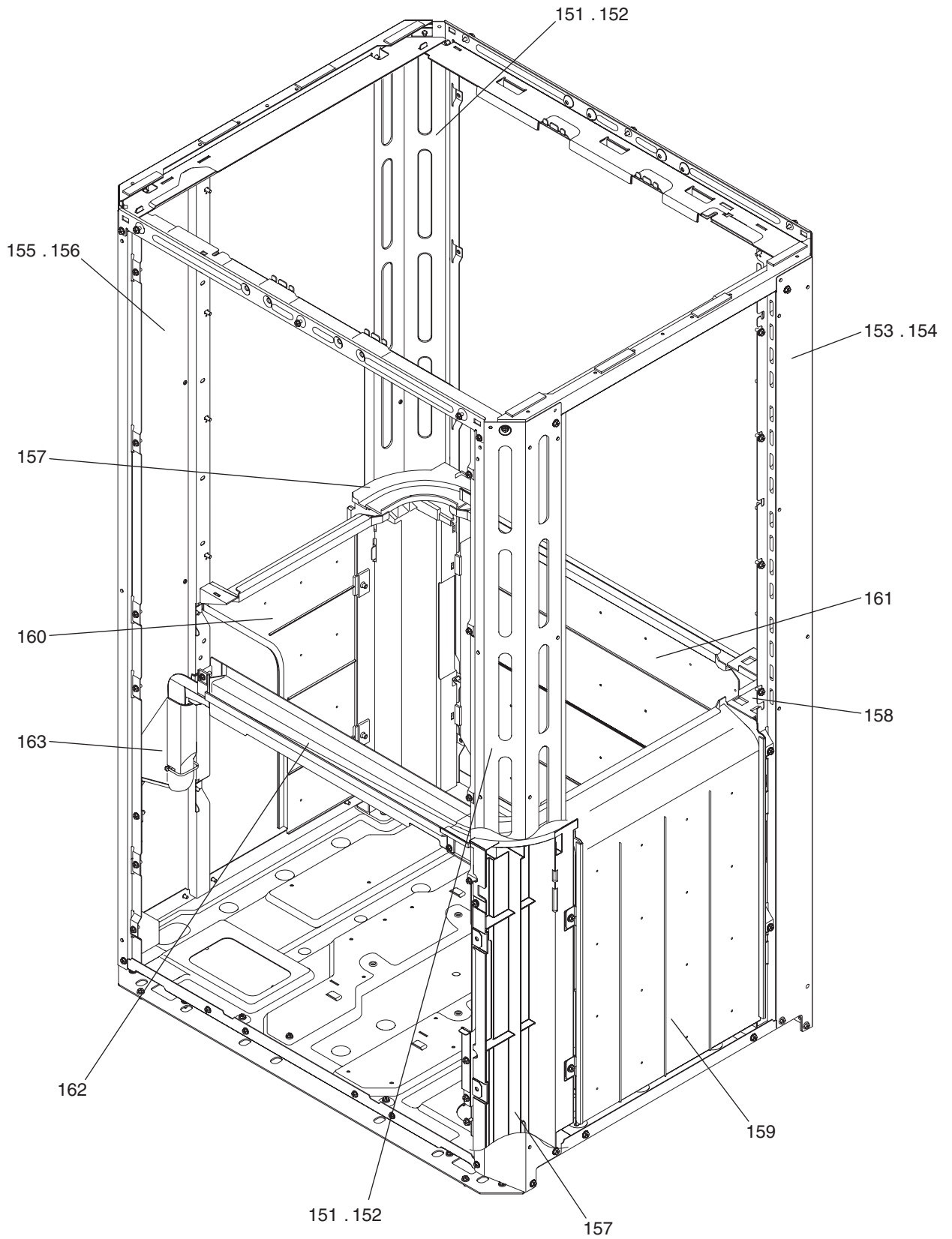
PUHY-M500YNW-A1(-BS)

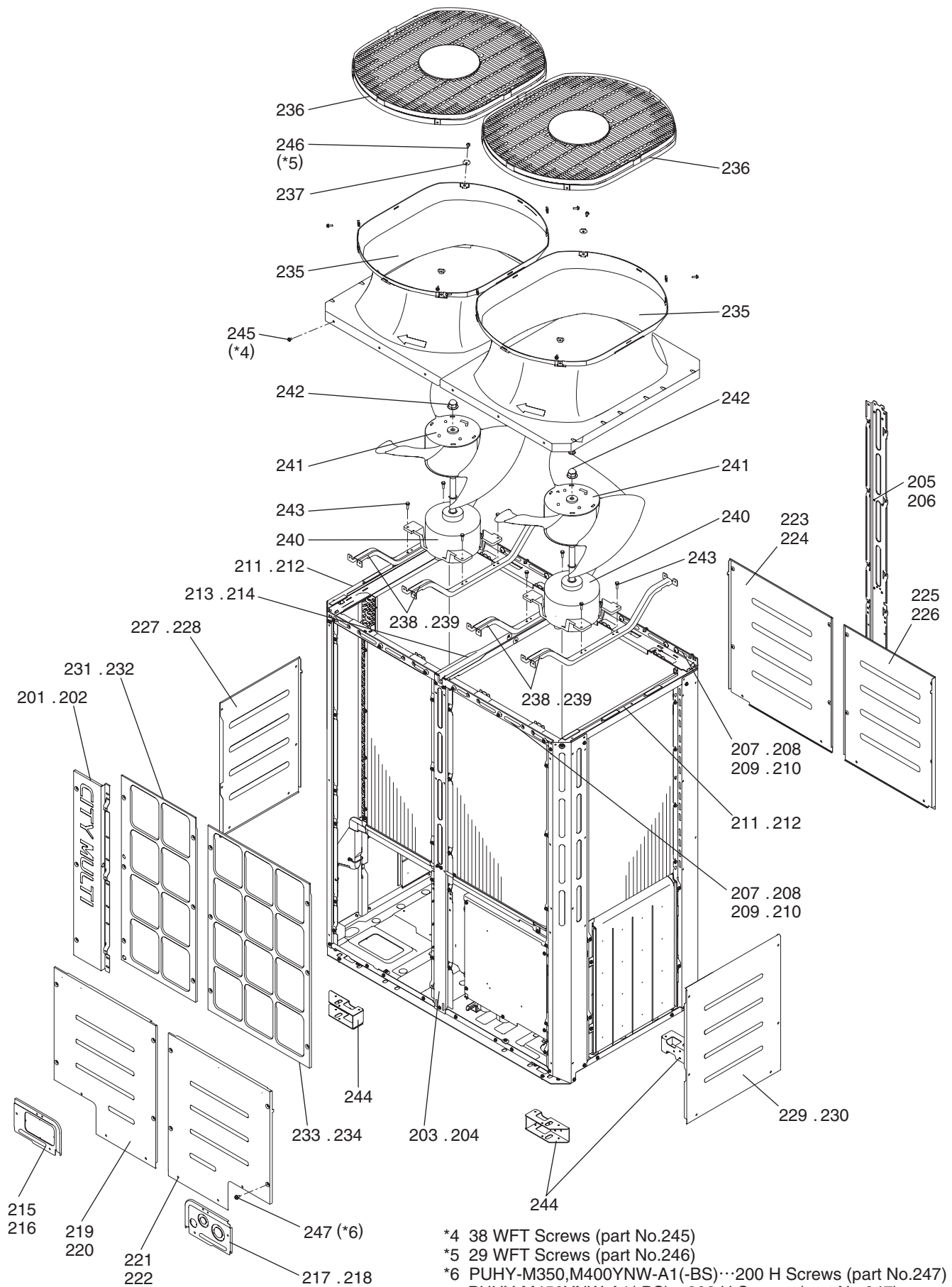
Part information update day : 2020/10/12

Please change the old catalog (issued Feb. 2020, No.BWE01850A) to this new catalog.
Content of revision : Some of parts are changed.

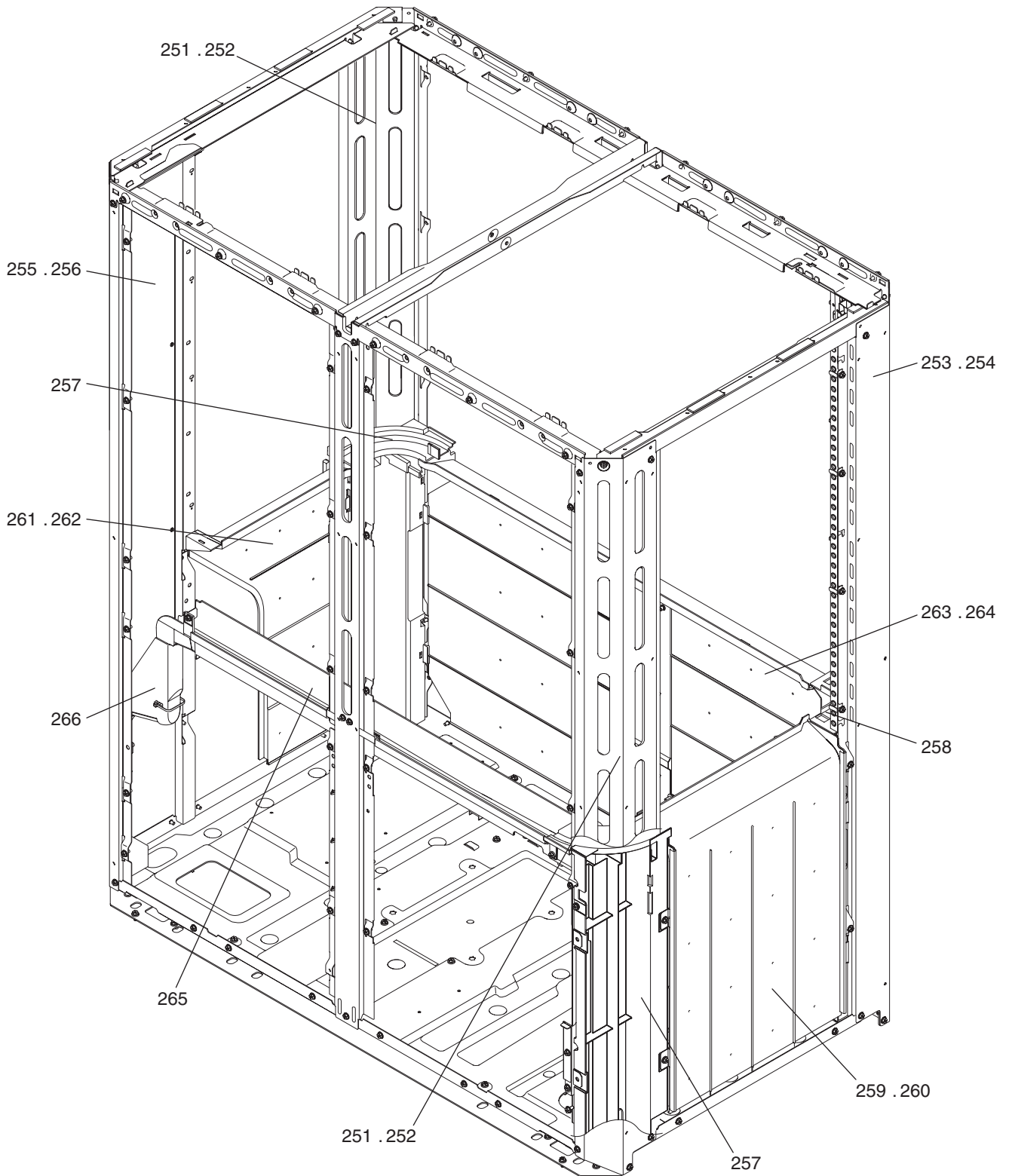


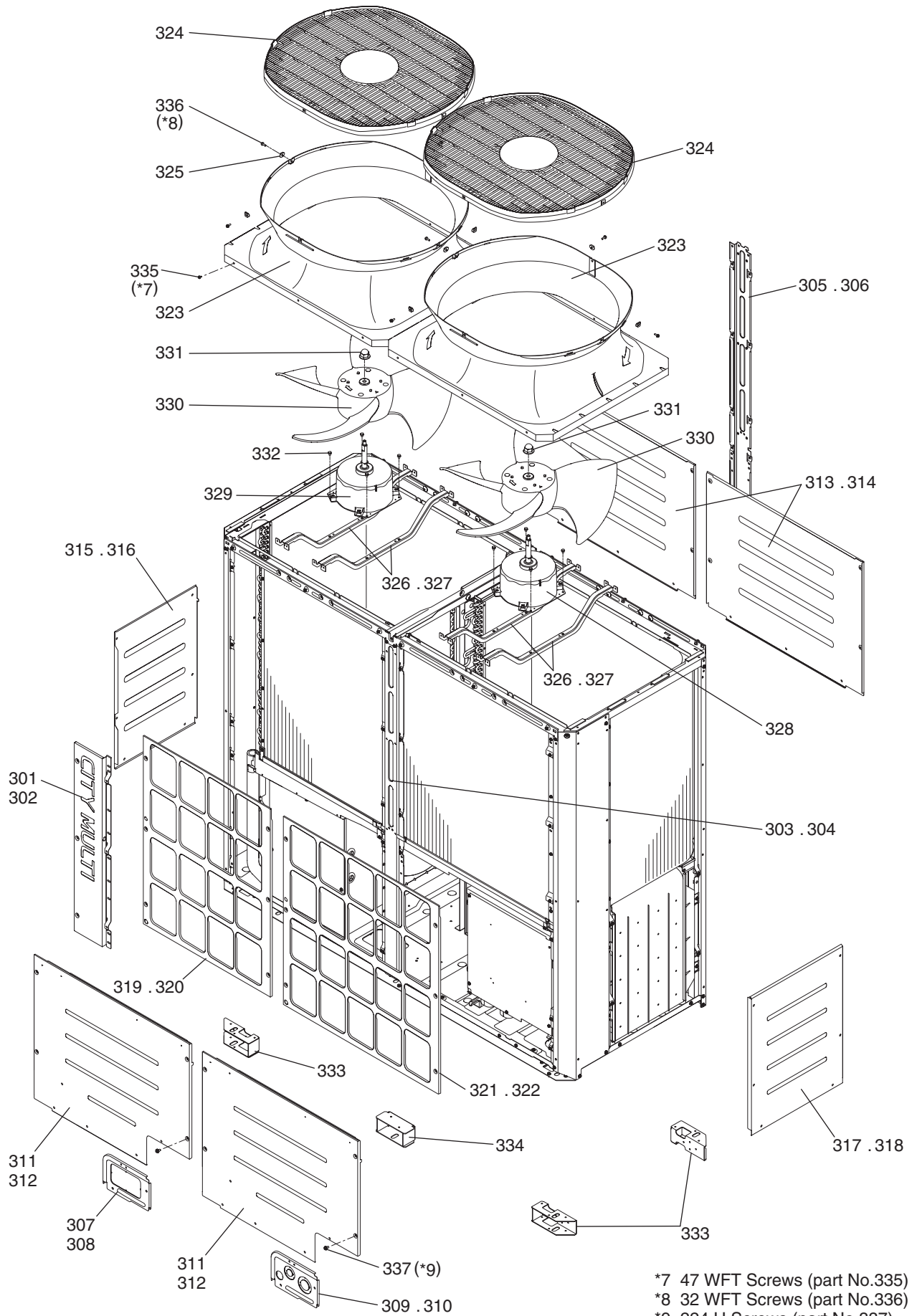




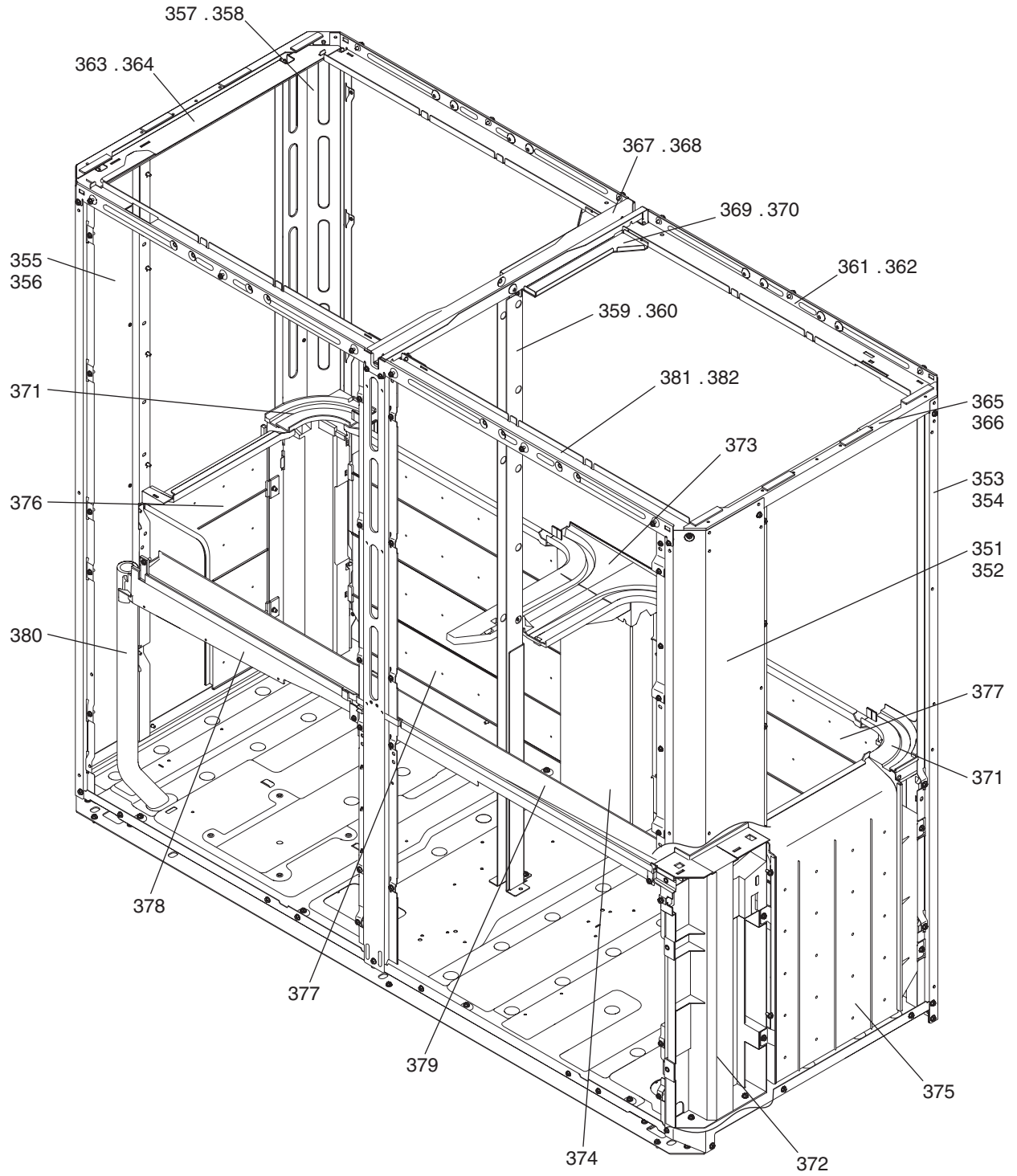


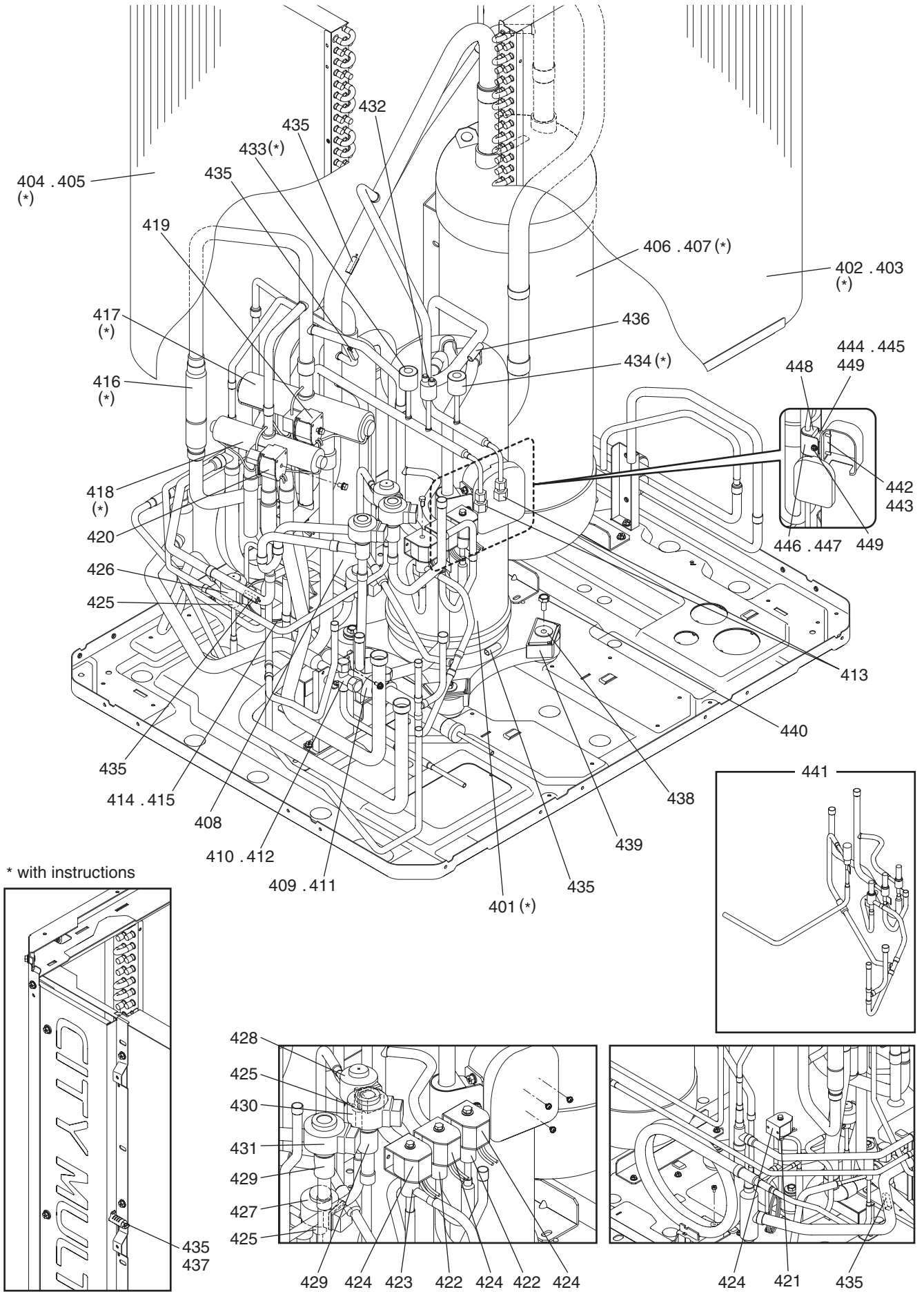
No.	Part No.	Part Name	Spec.	PUHY-M350YNW-A1	PUHY-M350YNW-A1-BS	PUHY-M400YNW-A1	PUHY-M400YNW-A1-BS	PUHY-M450YNW-A1	PUHY-M450YNW-A1-BS	Dwg. No.	Notes for the models	Revision info.
201	R61 043 626	Pillar LF2		1		1		1		KJ00F066G09		
202	R61 044 626	Pillar LF2	BS		1		1		1	KJ00F066G10		
203	R61 070 626	Pillar assy C		1		1		1		KS00L326G13		Chg.
204	R61 052 626	Pillar assy C	BS		1		1		1	KS00L326G12		
205	R61 053 626	Pillar C		1		1		1		KS00L327G11		
206	R61 054 626	Pillar C	BS		1		1		1	KS00L327G12		
207	R61 134 162	Frame assy FB		2		2				KL00G709G03		
208	R61 135 162	Frame assy FB	BS		2		2			KL00G709G04		
209	R61 136 162	Frame assy FB 3L						2		KL00G717G03		
210	R61 137 162	Frame assy FB 3L	BS					2		KL00G717G04		
211	R61 171 162	Frame assy LR		2		2		2		KS00L332G13		Chg.
212	R61 172 162	Frame assy LR	BS		2		2	2		KS00L332G14		Chg.
213	R61 162 162	Frame assy C		1		1		1		KJ00K843G01		
214	R61 163 162	Frame assy C	BS		1		1	1		KJ00K843G02		
215	R61 218 690	Piping cover		1		1		1		KJ00F069G05		
216	R61 219 690	Piping cover	BS		1		1	1		KJ00F069G06		
217	R61 220 690	Wiring cover		1		1		1		KJ00F070G05		
218	R61 221 690	Wiring cover	BS		1		1	1		KJ00F070G06		
219	R61 390 651	Panel FL		1		1		1		KS00L335G07		
220	R61 391 651	Panel FL	BS		1		1	1		KS00L335G08		
221	R61 392 651	Panel FR		1		1		1		KS00L336G09		
222	R61 393 651	Panel FR	BS		1		1	1		KS00L336G10		
223	R61 394 651	Panel BL		1		1		1		KD02B680H02		
224	R61 395 651	Panel BL	BS		1		1	1		KS00R824G01		
225	R61 396 651	Panel BR		1		1		1		KD02B681H02		
226	R61 397 651	Panel BR	BS		1		1	1		KS00R825G01		
227	R61 383 651	Panel L		1		1		1		KS02R320H02		
228	R61 384 651	Panel L	BS		1		1	1		KS00R822G01		
229	R61 385 651	Panel R		1		1		1		KS02R321H02		
230	R61 386 651	Panel R	BS		1		1	1		KS00R823G01		
231	R61 020 611	Fin guard FL		1		1		1		KD02B849H02		
232	R61 021 611	Fin guard FL	BS		1		1	1		KS00T210G02		
233	R61 022 611	Fin guard FR		1		1		1		KD02B850H01		
234	R61 023 611	Fin guard FR	BS		1		1	1		KS00T211G01		
235	R61 016 119	Bell mouth		2	2	2	2	2	2	KB25Y025G02		
236	R61 019 118	Fan guard		2	2	2	2	2	2	KB25Y024G01		
237	R61 009 669	Plate fanguard		8	8	8	8	8	8	KD02D205H02		
238	R61 040 140	Base fan		4		4		4		KS02B161H01		
239	R61 041 140	Base fan	BS		4		4	4		KS02B161G01		
240	R61 351 220	Motor	LM-750-F4-1	2	2	2	2	2	2	P780354X02		
241	R61 048 114	Fan	550D	2	2	2	2	2	2	KB25A994H02		
242	R63 4H6 122	Box nut	M12 CH	2	2	2	2	2	2	P552000X01		
243	R61 028 087	Upset screw	M6 x 22	8	8	8	8	8	8	P516049X01		
244	R61 042 130	Attachment leg		4	4	4	4	4	4	KJ00F064G02		
245	R63 006 087	WFT screw	M5 x 12(30pcs)	2	2	2	2	2	2	KB00H418G01	*4	





- *7 47 WFT Screws (part No.335)
- *8 32 WFT Screws (part No.336)
- *9 224 H Screws (part No.337)

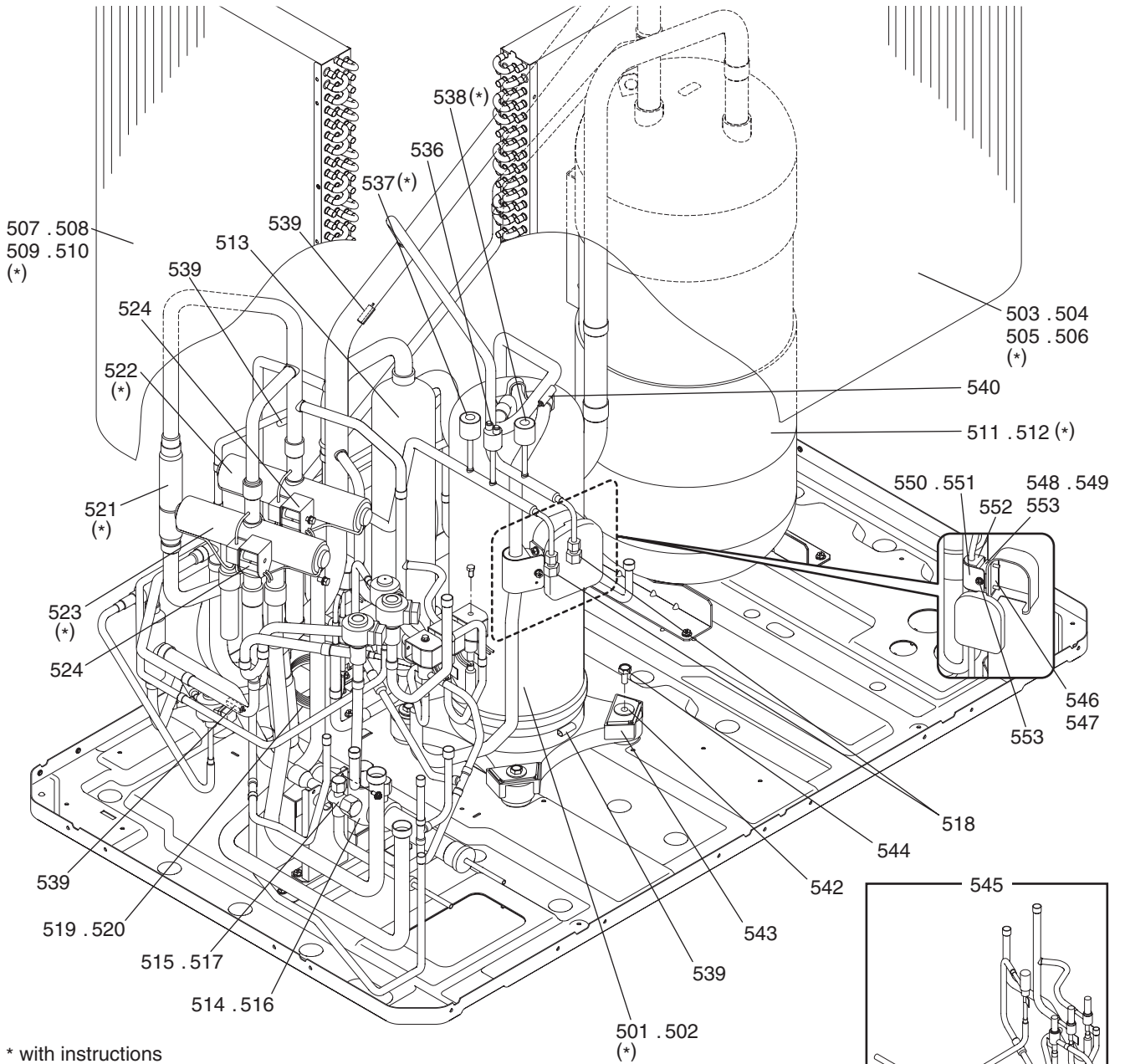




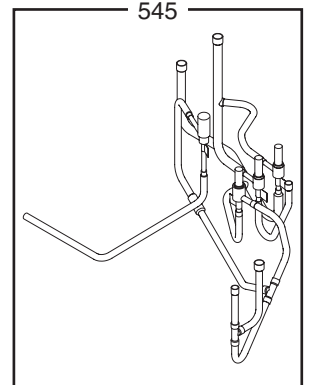
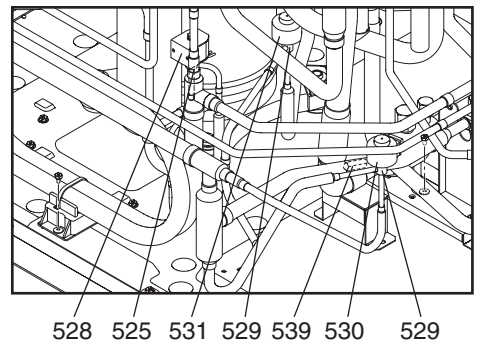
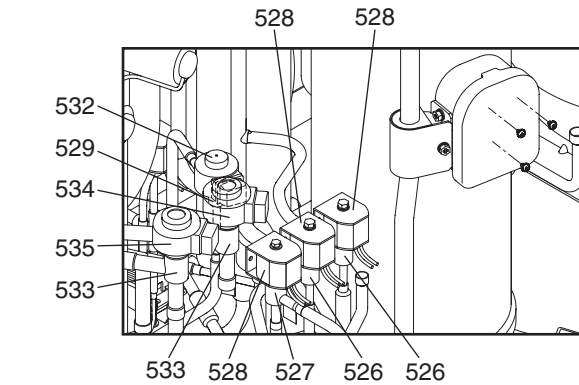
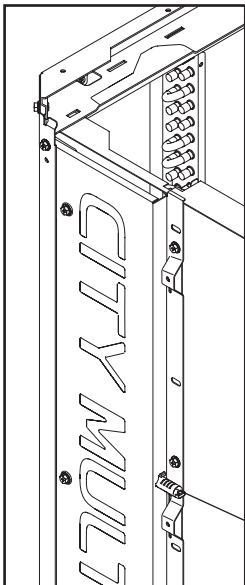
PUHY-M200,M250,M300YNW-A1
 PUHY-M200,M250,M300YNW-A1-BS

FUNCTIONAL PARTS (1)

No.	Part No.	Part Name	Spec.	PUHY-M200YNW-A1	PUHY-M200YNW-A1-BS	PUHY-M250YNW-A1	PUHY-M250YNW-A1-BS	PUHY-M300YNW-A1	PUHY-M300YNW-A1-BS	Dwg. No.	Notes for the models	Revision info.
401	R69 194 478	Scroll compressor SP kit	HVK68FA-YE	1	1	1	1	1	1	EP10172B01	*	
402	R61 G68 480	Heat exchanger SP kit	2L F	1		1		1		KJ00K959G01	*	
403	R61 G69 480	Heat exchanger SP kit	2L F BS		1		1		1	KJ00K959G02	*	
404	R61 G70 480	Heat exchanger SP kit	2L R	1		1			1	KJ00K960G01	*	
405	R61 G71 480	Heat exchanger SP kit	2L R BS		1		1		1	KJ00K960G02	*	
406	R61 192 484	Accumulator assy SP kit		1		1			1	KS00D242G42	*	
407	R61 172 484	Accumulator assy SP kit	BS		1		1		1	KS00D242G20	*	
408	R61 065 487	Oil separator assy		1	1	1	1	1	1	KL00R795G01		
409	R61 020 410	Ball valve	SBV07-005	1	1	1	1	1	1	P636405X01	<BV1>	
410	R61 022 538	Valve	FSV-JA3GME-29	1	1	1	1	1	1	P636401X01	<BV2>	
411	R61 008 454	Strainer	25.4D	1	1	1	1	1	1	KB48K250G02	<ST1>	
412	R63 Y03 454	Strainer	19.05D	1	1	1	1	1	1	W893281G01	<ST2>	
413	R61 007 413	Check joint L	TCJ-2GME-5	2	2	2	2	2	2	KR50C388H01	<CJ1,CJ2>	
414	R63 002 425	Capillary tube assy		1	1	1	1			KB49F229G01	<CP1>	
415	R63 R34 425	Capillary tube assy						1	1	W905625G02	<CP1>	
416	R61 100 418	Check valve 1 SP kit	YCV15-014	1	1	1	1	1	1	KJ00M034G01	<CV1>*	
417	R61 026 403	Four way valve A SP kit		1	1	1	1	1	1	KJ00M034G02	<21S4a>*	
418	R61 027 403	Four way valve B SP kit		1	1	1	1	1	1	KJ00M034G03	<21S4b>*	
419	R61 016 242	Four way valve coil	SQ-A2122G-005025-RK	1	1	1	1	1	1	P472115X02	<21S4a>	
420	R61 021 242	Four way valve coil	STF-H01AJ2355A1	1	1	1	1	1	1	P472118X01	<21S4b>	
421	R63 046 232	Solenoid valve	FDFA277	1	1	1	1	1	1	P631312X01	<SV1a>	
422	R13 018 921	Solenoid valve	FDFA4-016-RK	2	2	2	2	2	2	P631311X01	<SV2,SV10>	
423	R61 097 232	Solenoid valve	FDFA6A58	1	1	1	1	1	1	P631340X01	<SV9>	
424	R61 055 243	Solenoid valve coil	FQ-A0122G-0015724	4	4	4	4	4	4	P472116X01	<SV1a,SV2,SV9,SV10>	
425	R63 R34 401	Linear expansion valve	CAM-B35YGMD-2	3	3	3	3	3	3	P632416X01	<LEV1,LEV4,LEV9>	
426	R61 111 401	Linear expansion valve coil	CAM-MD12MD-125	1	1	1	1	1	1	P472113X01	<LEV1>	
427	R61 120 401	Linear expansion valve coil	CAM-MD12MD-128	1	1	1	1	1	1	P472131X01	<LEV4>	
428	R61 131 401	Linear expansion valve coil	CAM-MD12MD-126	1	1	1	1	1	1	P472114X01	<LEV9>	
429	R61 107 401	Linear expansion valve	PAM-BB0YGMD-2	2	2	2	2	2	2	KR50C486H01	<LEV2a,LEV2b>	
430	R61 108 401	Linear expansion valve coil	PAM-MD12MD-17	1	1	1	1	1	1	P472109X01	<LEV2a>	
431	R61 109 401	Linear expansion valve coil	PAM-MD12MD-18	1	1	1	1	1	1	P472110X01	<LEV2b>	
432	R61 052 208	Pressure switch	ACB-1UB179W	1	1	1	1	1	1	P426346X01	<63H1>	
433	R61 120 288	Pressure sensor	NSK-BH042D-501	1	1	1	1	1	1	KJ00H708G07	<63HS1>*	
434	R61 121 288	Pressure sensor	NSK-BH017D-602	1	1	1	1	1	1	KJ00H708G08	<63LS>*	
435	R61 280 200	Thermistor	PXM-41E-M105-01Y	6	6	6	6	6	6	P418144X01	<TH2,TH3,TH5,TH6,TH7,TH15>	
436	R61 294 200	Thermistor	PX2M-56D-M2	1	1	1	1	1	1	P418110X01	<TH4>	
437	R61 001 310	Sensor holder		1	1	1	1	1	1	KB25B471G02		
438	R63 852 860	Rubber mount		4	4	4	4	4	4	W897574H01	For compressor	
439	R61 027 155	Attachment (HH)		2	2	2	2	2	2	KJ00F713G04		
440	R61 009 306	Bolt	M6	4	4	4	4	4	4	KJ12F711H05		
441	R61 223 494	Pipe assy (SV)		1	1	1	1	1	1	KB00C03BG01	<SV2,SV9,SV10,LEV9>	
442	R61 001 132	Attachment		1		1		1		KB02K008H01		
443	R61 002 132	Attachment	BS		1		1		1	KB02K008H02		
444	R61 005 609	Attachment Saddle		1		1		1		KL00L214G03		
445	R61 006 609	Attachment Saddle	BS		1		1		1	KL00L214G04		



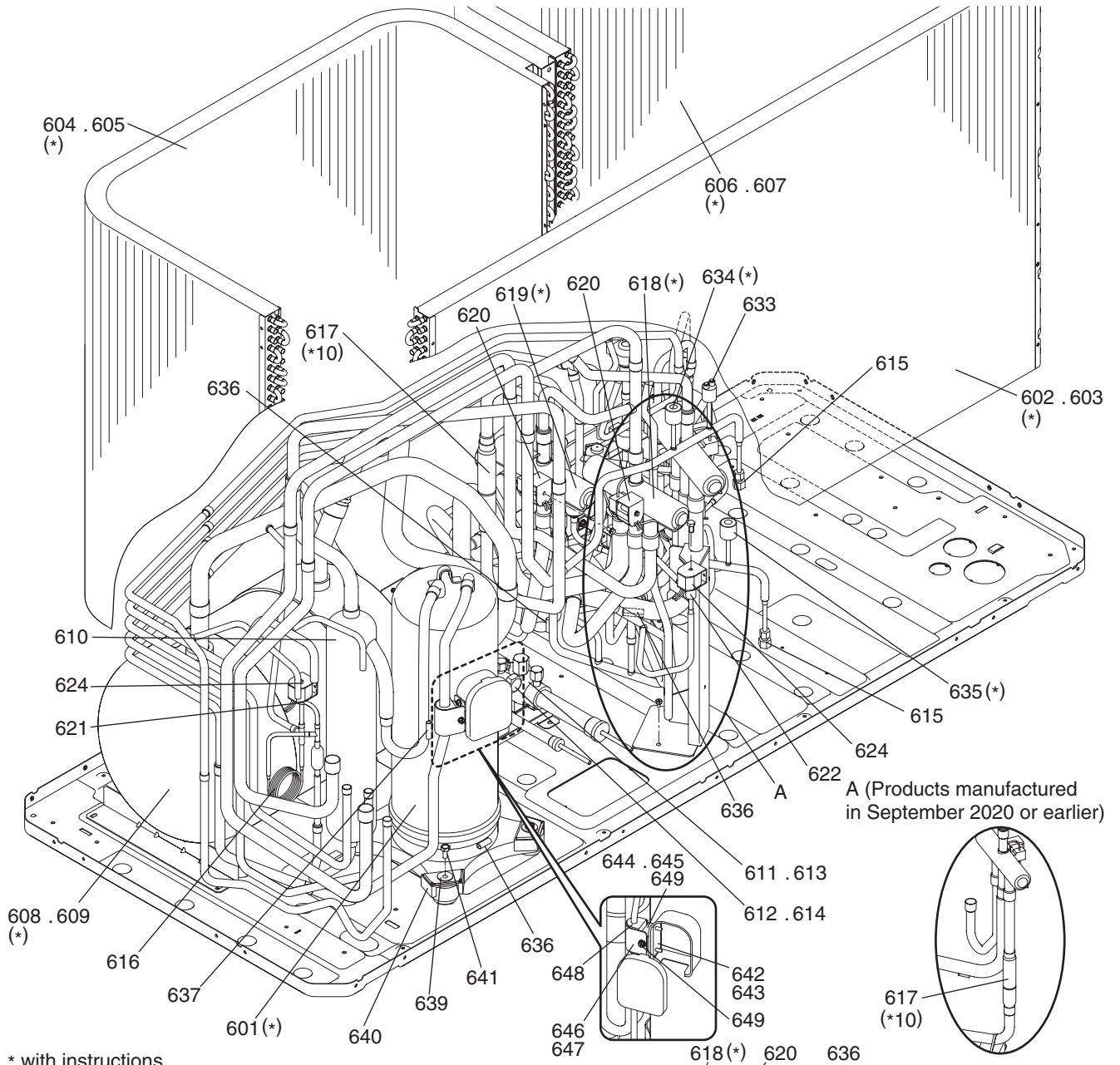
* with instructions



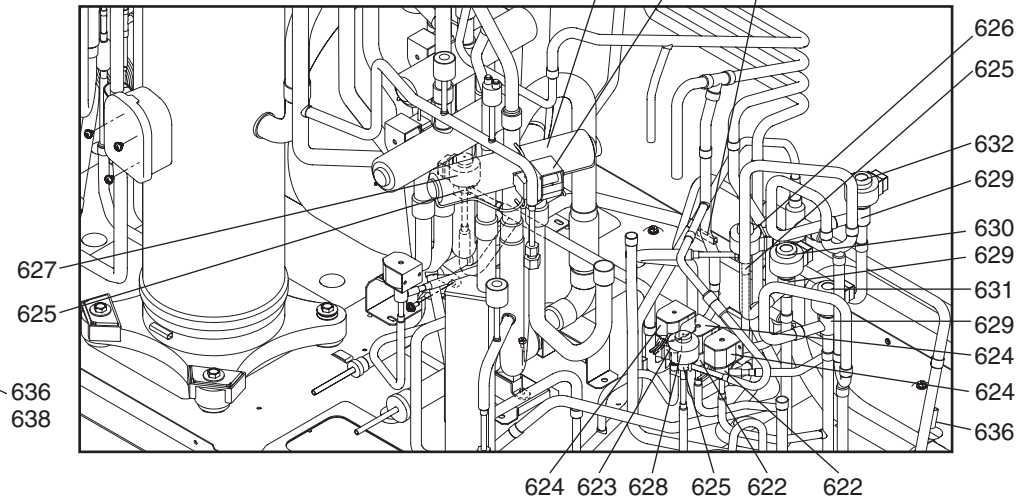
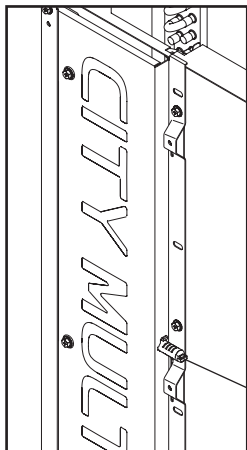
PUHY-M350,M400,M450YNW-A1
 PUHY-M350,M400,M450YNW-A1-BS

FUNCTIONAL PARTS (2)

No.	Part No.	Part Name	Spec.	PUHY-M350YNW-A1	PUHY-M350YNW-A1-BS	PUHY-M400YNW-A1	PUHY-M400YNW-A1-BS	PUHY-M450YNW-A1	PUHY-M450YNW-A1-BS	Dwg. No.	Notes for the models	Revision info.
501	R69 194 478	Scroll compressor SP kit	HVK68FA-YE	1	1					EP10172B01	*	
502	R69 186 478	Scroll compressor SP kit	HVK97FA-YE			1	1	1	1	EP10179B01	*	
503	R61 G72 480	Heat exchanger SP kit	2L F	1		1				KJ00K961G01	*	
504	R61 G73 480	Heat exchanger SP kit	2L F BS		1		1			KJ00K961G02	*	
505	R61 G74 480	Heat exchanger SP kit	3L F					1		KJ00K963G01	*	
506	R61 G75 480	Heat exchanger SP kit	3L F BS					1		KJ00K963G02	*	
507	R61 G76 480	Heat exchanger SP kit	2L R	1		1				KJ00K962G01	*	
508	R61 G77 480	Heat exchanger SP kit	2L R BS		1		1			KJ00K962G02	*	
509	R61 G78 480	Heat exchanger SP kit	3L R					1		KJ00K964G01	*	
510	R61 G79 480	Heat exchanger SP kit	3L R BS					1		KJ00K964G02	*	
511	R61 188 484	Accumulator assy SP kit		1		1		1		KS00D242G38	*	
512	R61 189 484	Accumulator assy SP kit	BS		1		1		1	KS00D242G39	*	
513	R61 065 487	Oil separator assy		1	1	1	1	1	1	KL00R795G01		
514	R61 019 410	Ball valve	SBV10-005	1	1	1	1	1	1	P636404X01	<BV1>	
515	R61 023 538	Valve	FSV-JA4GME-6	1	1	1	1	1	1	P636402X01	<BV2>	
516	R61 018 454	Strainer	28.6D	1	1	1	1	1	1	KJ01K906G01	<ST1>	
517	R63 Y03 454	Strainer	19.05D	1	1	1	1	1	1	W893281G01	<ST2>	
518	R61 007 413	Check joint L	TCJ-2GME-5	2	2	2	2	2	2	KR50C388H01	<CJ1,CJ2>	
519	R63 R34 425	Capillary tube assy		1	1					W905625G02	<CP1>	
520	R61 014 425	Capillary tube assy				1	1	1	1	KB49M503G01	<CP1>	
521	R61 100 418	Check valve 1 SP kit	YCV15-014	1	1	1	1	1	1	KJ00M034G01	<CV1>*	
522	R61 028 403	Four way valve A SP kit		1	1	1	1	1	1	KJ00M034G04	<21S4a>*	
523	R61 029 403	Four way valve B SP kit		1	1	1	1	1	1	KJ00M034G05	<21S4b>*	
524	R61 016 242	Four way valve coil	SQ-A2122G-005025-RK	2	2	2	2	2	2	P472115X02	<21S4a,21S4b>	
525	R63 046 232	Solenoid valve	FDFA2A77	1	1	1	1	1	1	P631312X01	<SV1a>	
526	R13 018 921	Solenoid valve	FDFA4-016-RK	2	2	2	2	2	2	P631311X01	<SV2,SV10>	
527	R61 097 232	Solenoid valve	FDFA6A58	1	1	1	1	1	1	P631340X01	<SV9>	
528	R61 055 243	Solenoid valve coil	FQ-A0122G-0015724	4	4	4	4	4	4	P472116X01	<SV1a,SV2,SV9,SV10>	
529	R63 R34 401	Linear expansion valve	CAM-B35YGMD-2	3	3	3	3	3	3	P632416X01	<LEV1,LEV4,LEV9>	
530	R61 111 401	Linear expansion valve coil	CAM-MD12MD-125	1	1	1	1	1	1	P472113X01	<LEV1>	
531	R61 120 401	Linear expansion valve coil	CAM-MD12MD-128	1	1	1	1	1	1	P472131X01	<LEV4>	
532	R61 131 401	Linear expansion valve coil	CAM-MD12MD-126	1	1	1	1	1	1	P472114X01	<LEV9>	
533	R61 107 401	Linear expansion valve	PAM-BB0YGMD-2	2	2	2	2	2	2	KR50C486H01	<LEV2a,LEV2b>	
534	R61 108 401	Linear expansion valve coil	PAM-MD12MD-17	1	1	1	1	1	1	P472109X01	<LEV2a>	
535	R61 109 401	Linear expansion valve coil	PAM-MD12MD-18	1	1	1	1	1	1	P472110X01	<LEV2b>	
536	R61 052 208	Pressure switch	ACB-1UB179W	1	1	1	1	1	1	P426346X01	<63H1>	
537	R61 120 288	Pressure sensor	NSK-BH042D-501	1	1	1	1	1	1	KJ00H708G07	<63HS1>*	
538	R61 121 288	Pressure sensor	NSK-BH017D-602	1	1	1	1	1	1	KJ00H708G08	<63LS>*	
539	R61 280 200	Thermistor	PXM-41E-M105-01Y	6	6	6	6	6	6	P418144X01	<TH2,TH3,TH5,TH6,TH7,TH15>	
540	R61 294 200	Thermistor	PX2M-56D-M2	1	1	1	1	1	1	P418110X01	<TH4>	
541	R61 001 310	Sensor holder		1	1	1	1	1	1	KB25B471G02		
542	R63 852 860	Rubber mount		4	4	4	4	4	4	W897574H01	For compressor	
543	R61 027 155	Attachment (HH)		2	2	2	2	2	2	KJ00F713G04		
544	R61 009 306	Bolt	M6	4	4	4	4	4	4	KJ12F711H05		
545	R61 223 494	Pipe assy (SV)		1	1	1	1	1	1	KB00C03BG01	<SV2,SV9,SV10,LEV9>	

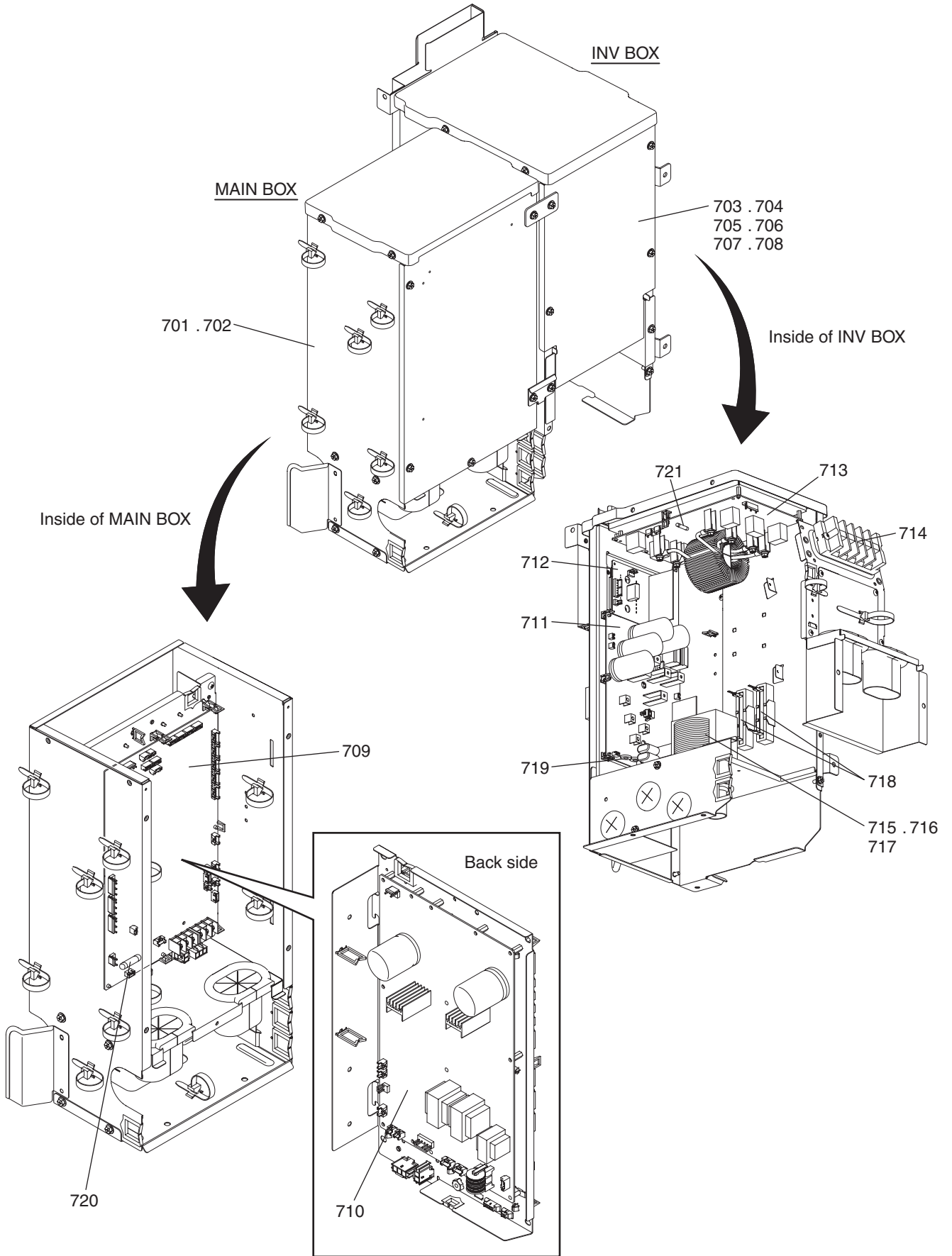


* with instructions

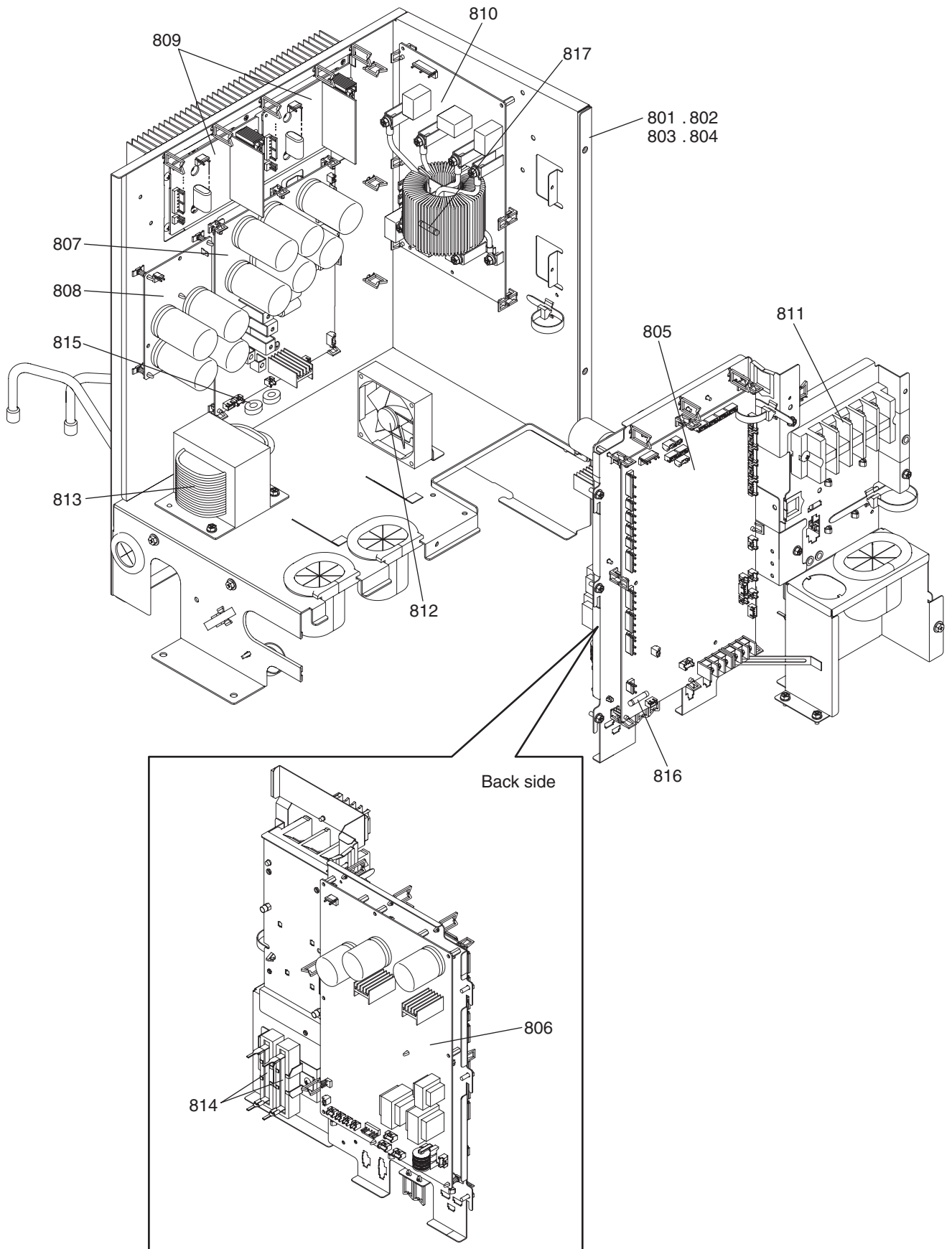


*10 The quantity of the parts required depends on the manufacturing date of the products to be used.
 September 2020 or earlier (Serial numbers up to 09W****): 2 pieces
 October 2020 or later (Serial numbers 0XW**** or later): 1 piece

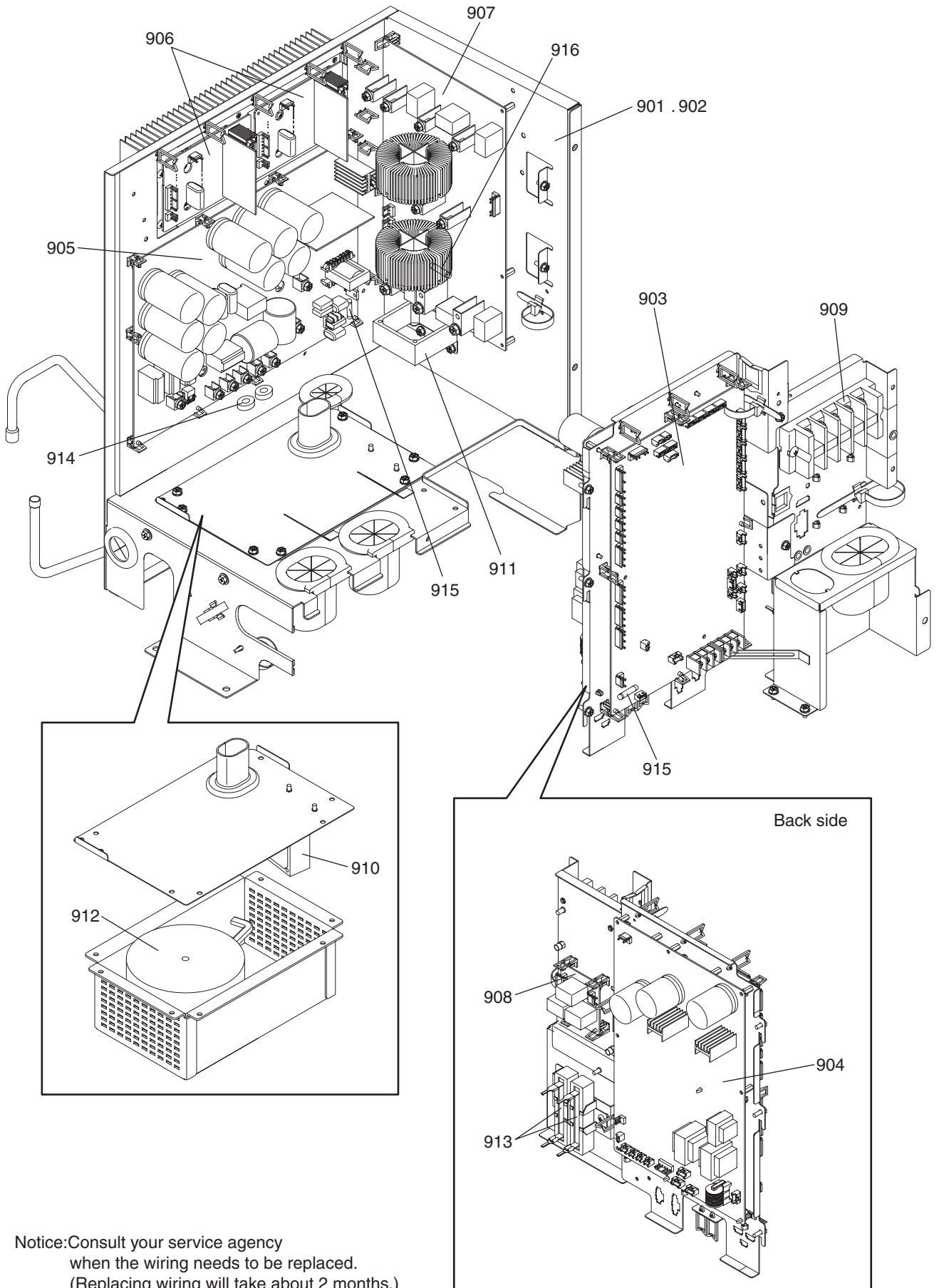
No.	Part No.	Part Name	Spec.	PUHY-M500YNW-A1	PUHY-M500YNW-A1-BS					Dwg. No.	Notes for the models	Revision info.
601	R69 186 478	Scroll compressor	HVK97FA-YE	1	1					EP10179B01	*	
602	R61 G80 480	Heat exchanger SP kit	2L F	1						KJ00K965G01	*	
603	R61 G81 480	Heat exchanger SP kit	2L F BS		1					KJ00K965G02	*	
604	R61 G93 480	Heat exchanger SP kit	2L L	1						KJ00K966G01	*	
605	R61 G95 480	Heat exchanger SP kit	2L L BS		1					KJ00K966G02	*	
606	R61 G97 480	Heat exchanger SP kit	2L R	1						KJ00K967G01	*	
607	R61 G98 480	Heat exchanger SP kit	2L R BS		1					KJ00K967G02	*	
608	R61 190 484	Accumulator assy SP kit		1						KS00D242G40	*	
609	R61 191 484	Accumulator assy SP kit	BS		1					KS00D242G41	*	
610	R61 064 487	Oil separator assy		1	1					KL00R770G01		
611	R61 019 410	Ball valve	SBV10-005	1	1					P636404X01	<BV1>	
612	R61 024 538	Valve	FSV-JA5GME-34	1	1					P636403X01	<BV2>	
613	R61 018 454	Strainer	28.6D	1	1					KJ01K906G01	<ST1>	
614	R63 Y03 454	Strainer	19.05D	1	1					W893281G01	<ST2>	
615	R61 008 413	Check joint	TCJ-2GME-4	2	2					KR50C379H01	<CJ1,CJ2>	
616	R63 R55 425	Capillary tube assy		1	1					W905191G02	<CP1>	
617	R61 101 418	Check valve	YCV15-014	2	2					P639220X01	<CV1,CV2> *10	Chg.
618	R61 030 403	Four way valve A,B SP kit		2	2					KJ00M034G06	<21S4a,21S4b>*	
619	R61 031 403	Four way valve C SP kit		1	1					KJ00M034G07	<21S4c>*	
620	R61 016 242	Four way valve coil	SQ-A2122G-005025-RK	3	3					P472115X02	<21S4a,21S4b,21S4c>	
621	R63 046 232	Solenoid valve	FDF2A77	1	1					P631312X01	<SV1a>	
622	R13 018 921	Solenoid valve	FDF4A-016-RK	3	3					P631311X01	<SV2,SV10,SV11>	
623	R61 097 232	Solenoid valve	FDF6A58	1	1					P631340X01	<SV9>	
624	R61 055 243	Solenoid valve coil	FQ-A0122G-0015724	5	5					P472116X01	<SV1a,SV2,SV9,SV10,SV11>	
625	R63 R34 401	Linear expansion valve	CAM-B35YGMD-2	3	3					P632416X01	<LEV1,LEV4,LEV9>	
626	R61 111 401	Linear expansion valve coil	CAM-MD12MD-125	1	1					P472113X01	<LEV1>	
627	R61 120 401	Linear expansion valve coil	CAM-MD12MD-128	1	1					P472131X01	<LEV4>	
628	R61 131 401	Linear expansion valve coil	CAM-MD12MD-126	1	1					P472114X01	<LEV9>	
629	R61 107 401	Linear expansion valve	PAM-BB0YGMD-2	3	3					KR50C486H01	<LEV2a,LEV2b,LEV2c>	
630	R61 108 401	Linear expansion valve coil	PAM-MD12MD-17	1	1					P472109X01	<LEV2a>	
631	R61 109 401	Linear expansion valve coil	PAM-MD12MD-18	1	1					P472110X01	<LEV2b>	
632	R61 114 401	Linear expansion valve coil	PAM-MD12MD-19	1	1					P472111X01	<LEV2c>	
633	R61 052 208	Pressure switch	ACB-1UB179W	1	1					P426346X01	<63H1>	
634	R61 115 288	Pressure sensor	NSK-BH042D-501	1	1					KJ00H708G05	<63HS1>*	
635	R61 152 288	Pressure sensor	NSK-BH017D-602	1	1					KJ00H708G10	<63LS>*	Chg.
636	R61 280 200	Thermistor	PXM-41E-M105-01Y	6	6					P418144X01	<TH2,TH3,TH5,TH6,TH7,TH15>	
637	R61 294 200	Thermistor	PX2M-56D-M2	1	1					P418110X01	<TH4>	
638	R61 001 310	Sensor holder		1	1					KB25B471G02		
639	R63 852 860	Rubber mount		4	4					W897574H01	For compressor	
640	R61 027 155	Attachment (HH)		4	4					KJ00F713G04		
641	R61 009 306	Bolt	M6	4	4					KJ12F711H05		
642	R61 001 132	Attachment		1						KB02K008H01		
643	R61 002 132	Attachment	BS		1					KB02K008H02		
644	R61 005 609	Attachment Saddle		1						KL00L214G03		
645	R61 006 609	Attachment Saddle	BS		1					KL00L214G04		



Notice: Consult your service agency when the wiring needs to be replaced.
 (Replacing wiring will take about 2 months.)



Notice: Consult your service agency when the wiring needs to be replaced.
 (Replacing wiring will take about 2 months.)



Notice: Consult your service agency
 when the wiring needs to be replaced.
 (Replacing wiring will take about 2 months.)

mitsubishi
MITSUBISHI ELECTRIC CORPORATION

BWE01850B (20201031)