

PARTS CATALOG

Series PLFY Ceiling Cassettes

Indoor unit

[Model Name]

[Service Ref.]

PLFY-WL10VFM-E

PLFY-WL10VFM-E.TH

PLFY-WL15VFM-E

PLFY-WL15VFM-E.TH

PLFY-WL20VFM-E

PLFY-WL20VFM-E.TH

PLFY-WL25VFM-E

PLFY-WL25VFM-E.TH

PLFY-WL32VFM-E

PLFY-WL32VFM-E.TH

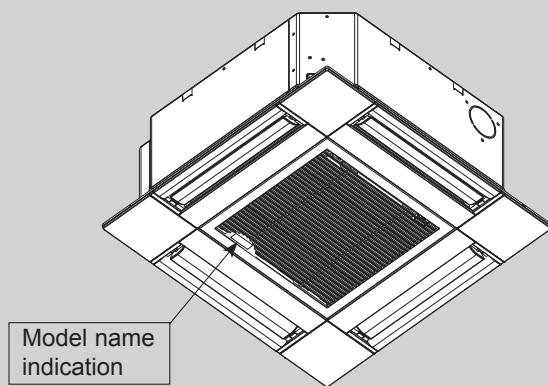
PLFY-WL40VFM-E

PLFY-WL40VFM-E.TH

Notes:

- PLFY-WL40VFM-E.TH has been added.
- Some descriptions have been modified in REVISED EDITION-A.

OCB717 is void.



INDOOR UNIT

CONTENTS

1. SERVICE PARTS LIST..... 2

SERVICE MANUAL (OCH717)

CITY MULTI

1

SERVICE PARTS LIST

PANEL PARTS

SLP-2FA (Standard)

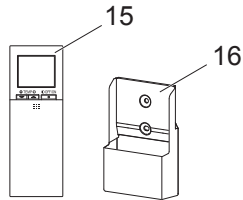
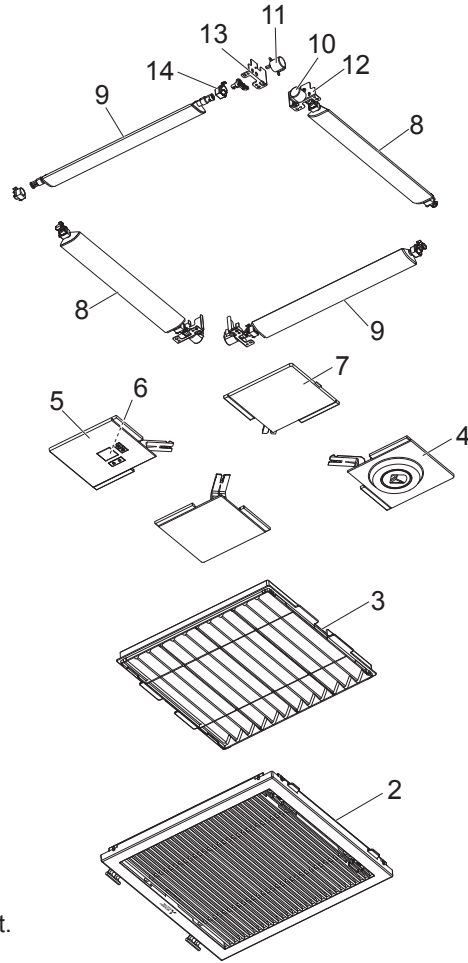
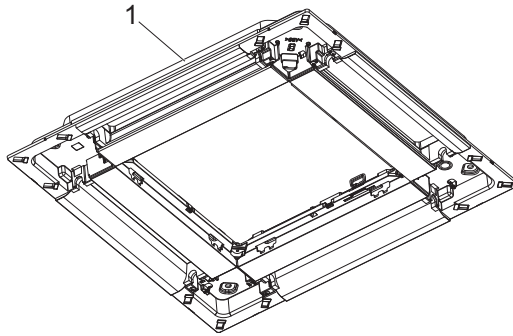
SLP-2FAL (with Signal Receiver)

SLP-2FALM (with Receiver and Remote Controller)

SLP-2FAE (with i-see Sensor)

SLP-2FALE (with Receiver and i-see Sensor)

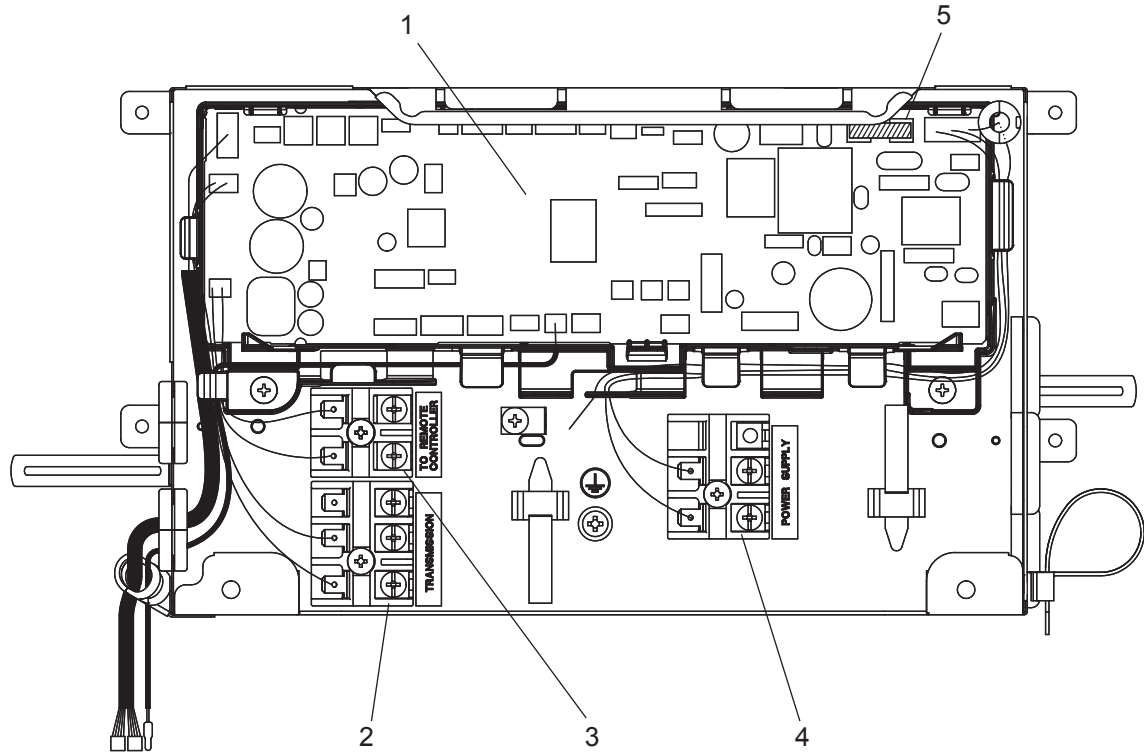
SLP-2FALME (with Receiver, i-see Sensor, and Remote Controller)



1. The part quantity below indicates the required number of pieces per unit.
2. The circled No. indicates that the part is not shown in the figure.

No.	Parts No.	Parts Name	SLP-2FA	SLP-2FAL	SLP-2FALM	SLP-2FAE	SLP-2FALE	SLP-2FALME	Wiring Diagram Symbol	Remarks
1	E27 C26 003	AIR OUTLET GRILLE	1	1	1	1	1	1		
2	E27 C26 010	INTAKE GRILLE	1	1	1	1	1	1		
3	E27 C26 100	AIR FILTER	1	1	1	1	1	1		
4	E27 C29 975	CORNER PANEL (i-see Sensor)				1	1	1		
5	E27 C28 975	CORNER PANEL (Signal Receiver)		1	1		1	1		
6	E27 C27 317	WIRELESS REMOTE CONTROLLER BOARD		1	1		1	1	W.B	
7	E27 C26 975	CORNER PANEL	4	3	3	3	2	2		Includes safety strap
8	E27 C26 037	AUTO VANE -1	2	2	2	2	2	2		GREEN
9	E27 C27 037	AUTO VANE -2	2	2	2	2	2	2		BLUE
10	E27 C26 303	VANE MOTOR-1	2	2	2	2	2	2		GREEN
11	E27 C27 303	VANE MOTOR-2	2	2	2	2	2	2		BLUE
12	E27 C26 946	COUPLING-1	2	2	2	2	2	2		GREEN
13	E27 C27 946	COUPLING-2	2	2	2	2	2	2		BLUE
14	E27 C26 044	VANE BUSH	8	8	8	8	8	8		
15	E27 D44 426	WIRELESS REMOTE CONTROLLER			1			1		
16	E27 D44 083	HOLDER			1			1		
(17)	E27 C26 033	WIRE HOOK	2	2	2	2	2	2		
(18)	E27 C28 087	JUNCTION CABLE (Signal Receiver)		1	1		1	1		
(19)	E27 C27 087	JUNCTION CABLE (i-see Sensor)				1	1	1		

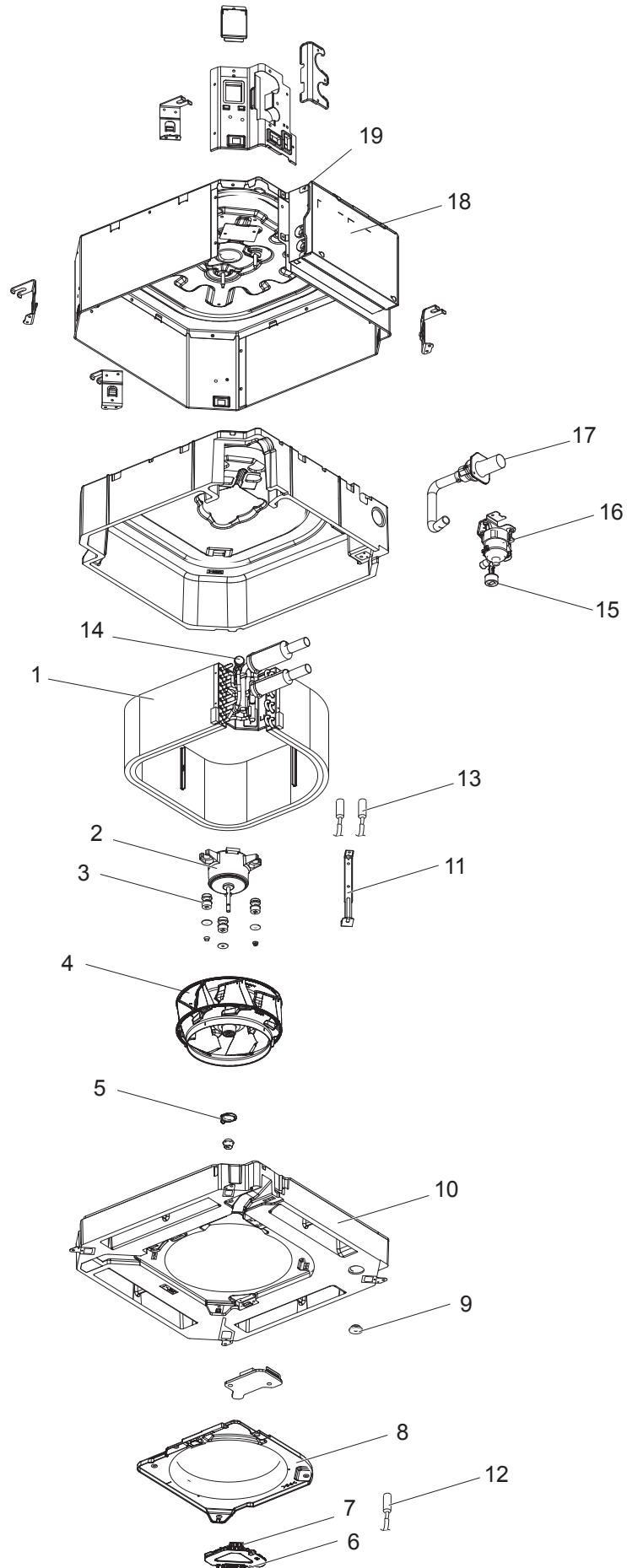
ELECTRICAL PARTS



1. The part quantity below indicates the required number of pieces per unit.
 2. The circled No. indicates that the part is not shown in the figure.

No.	Parts No.	Parts Name							Wiring Diagram Symbol	Remarks
			PLFY-WL10VFM-E.TH	PLFY-WL15VFM-E.TH	PLFY-WL20VFM-E.TH	PLFY-WL25VFM-E.TH	PLFY-WL32VFM-E.TH	PLFY-WL40VFM-E.TH		
1	E27 17D 447	INDOOR CONTROLLER BOARD	1	1	1	1	1	1	I.B	
2	E27 154 375	TERMINAL BLOCK	1	1	1	1	1	1	TB5	
3	E27 156 375	TERMINAL BLOCK	1	1	1	1	1	1	TB15	
4	E27 C20 375	TERMINAL BLOCK	1	1	1	1	1	1	TB2	
5	E27 648 382	FUSE	1	1	1	1	1	1	F1	6.30 A 250 V

FUNCTIONAL PARTS
PLFY-WL10VFM-E.TH
PLFY-WL15VFM-E.TH
PLFY-WL20VFM-E.TH
PLFY-WL25VFM-E.TH
PLFY-WL32VFM-E.TH
PLFY-WL40VFM-E.TH



1. The part quantity below indicates the required number of pieces per unit.
2. The circled No. indicates that the part is not shown in the figure.

No.	Parts No.	Parts Name	PLFY-WL10VFM-E: TH	PLFY-WL15VFM-E: TH	PLFY-WL20VFM-E: TH	PLFY-WL25VFM-E: TH	PLFY-WL32VFM-E: TH	PLFY-WL40VFM-E: TH	Wiring Diagram Symbol	Remarks [Drawing No.]
1	E27 W02 620	INDOOR HEAT EXCHANGER	1	1						
1	E27 W04 620	INDOOR HEAT EXCHANGER			1	1	1			
1	E27 17D 620	INDOOR HEAT EXCHANGER						1		
2	E27 C12 300	INDOOR FAN MOTOR	1	1	1	1	1	1	MF	
3	E27 C12 105	MOTOR MOUNT	3	3	3	3	3	3		3 pcs/ set
4	E27 C12 502	TURBO FAN	1	1	1	1	1	1		
5	E27 K05 097	FAN WASHER&NUT	1	1	1	1	1	1		
6	E27 C12 091	CONNECTOR COVER	1	1	1	1	1	1		
7	E27 C12 090	CONNECTOR BOX	1	1	1	1	1	1		
8	E27 C12 509	BELL MOUTH	1	1	1	1	1	1		
9	E27 436 524	DRAIN PLUG	1	1	1	1	1	1		
10	E27 C12 700	DRAIN PAN	1	1	1	1	1	1		
11	E27 C12 648	COIL SUPPORT	1	1	1	1	1	1		
12	E27 C12 308	ROOM TEMP.THERMISTOR	1	1	1	1	1	1	TH21	
13	E27 C12 307	PIPE TEMP. THERMISTOR/LIQUID/GAS	1	1	1	1	1	1	TH22,TH23	
14	E27 895 642	AIR PURGE VALVE	1	1	1	1	1	1		
15	E27 C12 145	FLOAT SWITCH	1	1	1	1	1	1	FS	
16	E27 C12 355	DRAIN PUMP	1	1	1	1	1	1	DP	
17	E27 C12 702	DRAIN HOSE	1	1	1	1	1	1		
18	E27 C12 088	CONTROL BOX COVER	1	1	1	1	1	1		
19	-	CONTROL BOX	1	1	1	1	1	1		[BK00T198G05]
⑳	E27 W02 204	CONVERSION PIPE 22-15	2	2	2	2	2	1		
㉑	E27 M08 097	WASHER	4	4	4	4	4	4		
㉒	E27 580 704	DRAIN SOCKET	1	1	1	1	1	1		
㉓	-	BOARD CASE	1	1	1	1	1	1		[BK25Y516G06]

CITY MULTI

MITSUBISHI ELECTRIC CORPORATION

HEAD OFFICE : TOKYO BUILDING, 2-7-3, MARUNOUCHI, CHIYODA-KU TOKYO 100-8310, JAPAN
