

AIR CONDITIONING SYSTEMS

CITY MULTI



DATA BOOK

MODEL

PLFY-P-VLMD-E



PLFY-P-VLMD-E

1. SPECIFICATIONS	2
2. EXTERNAL DIMENSIONS	4
3. CENTER OF GRAVITY	7
4. ELECTRICAL WIRING DIAGRAMS	8
5. SOUND LEVELS	10
5-1. Sound levels	10
5-2. NC curves	10
6. OA INTAKE-STATIC PRESSURE CURVES	12
7. BRANCH DUCT INTAKE-STATIC PRESSURE CURVES	13
8. TEMPERATURE/AIRFLOW DISTRIBUTIONS	14
8-1. Temperature distributions	14
8-2. Airflow distributions	14
9. ELECTRICAL CHARACTERISTICS	15
10. OPTIONAL PARTS	16
10-1. Optional parts line up for the Indoor unit	16
10-2. OA duct flange	16

1. SPECIFICATIONS

Ceiling cassette (2-way flow type)

PLFY-P-VLMD-E

Model			PLFY-P20VLMD-E	PLFY-P25VLMD-E	PLFY-P32VLMD-E	PLFY-P40VLMD-E	
Power source			1-phase 220-240V 50Hz, 1-phase 220-230V 60Hz				
Cooling capacity (Nominal)	*1	kW	2.2	2.8	3.6	4.5	
	*1	BTU / h	7,500	9,600	12,300	15,400	
	*3	Power input	kW	0.072 / 0.075	0.072 / 0.075	0.072 / 0.075	0.081 / 0.085
	*3	Current input	A	0.36 / 0.37	0.36 / 0.37	0.36 / 0.37	0.40 / 0.42
Heating capacity (Nominal)	*2	kW	2.5	3.2	4.0	5.0	
	*2	BTU / h	8,500	10,900	13,600	17,100	
	*3	Power input	kW	0.065 / 0.069	0.065 / 0.069	0.065 / 0.069	0.074 / 0.079
	*3	Current input	A	0.30 / 0.32	0.30 / 0.32	0.30 / 0.32	0.34 / 0.37
External finish			Unit : Galvanized				
External dimension H x W x D		mm	290 x 776 x 634		290 x 776 x 634		
		in.	11-7/16 x 30-9/16 x 25		11-7/16 x 30-9/16 x 25		
Net weight		kg (lbs)	23 (51)	23 (51)	24 (53)	24 (53)	
Decoration panel	Model		CMP-40VLW-C	CMP-40VLW-C	CMP-40VLW-C	CMP-40VLW-C	
	External finish		ABS, MUNSELL (6.4Y 8.9/0.4), include Service Panel : Galvanized, MUNSELL (6.4Y 8.9/0.4)				
	Dimension		20 x 1,080 x 710				
	H x W x D		13/16 x 42-9/16 x 28				
	Net weight		6.5 (15)				
Heat exchanger			Cross fin				
FAN	Type x Quantity		Turbo fan x 1	Turbo fan x 1	Turbo fan x 1	Turbo fan x 1	
	External static press.	Pa	0	0	0	0	
		mmH ₂ O	0	0	0	0	
	Motor type		1-phase induction motor				
	Motor output		kW	0.015 (at 240V)	0.015 (at 240V)	0.015 (at 240V)	0.015 (at 240V)
	Driving mechanism		Direct-driven by motor				
	Airflow rate (Low-Mid-High)	m ³ / min		6.5 - 8.0 - 9.5	6.5 - 8.0 - 9.5	6.5 - 8.0 - 9.5	7.0 - 8.5 - 10.5
L / s		108 - 133 - 158	108 - 133 - 158	108 - 133 - 158	117 - 142 - 175		
cfm		230 - 283 - 335	230 - 283 - 335	230 - 283 - 335	247 - 300 - 371		
Sound pressure level (Low-Mid-High) (measured in anechoic room)	dB <A>		27 - 30 - 33 (220, 240V)	27 - 30 - 33 (220,240V)	27 - 30 - 33 (220,240V)	29 - 33 - 36 (220,240V)	
	dB <A>		28 - 31 - 34 (230V)	28 - 31 - 34 (230V)	28 - 31 - 34 (230V)	30 - 34 - 37 (230V)	
Insulation material			Polystyrene foam, Polyethylene foam, Urethane foam				
Air filter			PP honeycomb fabric (long life filter)				
Protection device			Fuse				
Refrigerant control device			LEV				
Connectable outdoor unit			R410A CITY MULTI				
Diameter of refrigerant pipe	Liquid (R410A)	mm (in.)	ø6.35 (ø1/4) Flare	ø6.35 (ø1/4) Flare	ø6.35 (ø1/4) Flare	ø6.35 (ø1/4) Flare	
	Gas (R410A)	mm (in.)	ø12.7 (ø1/2) Flare	ø12.7 (ø1/2) Flare	ø12.7 (ø1/2) Flare	ø12.7 (ø1/2) Flare	
Field drain pipe size		mm (in.)	O.D. 32mm (1-1/4)				
Drawing	External		IU-W275-920				
	Wiring		IU-W653-952				
	Refrigerant cycle		-				
Standard attachment	Document		Installation Manual, Instruction Book				
	Accessory		Drain hose I.D. 32mm (1-1/4) (flexible joint)				
Remark	Optional parts						
	Decoration panel		CMP-40VLW-C	CMP-40VLW-C	CMP-40VLW-C	CMP-40VLW-C	
	OA duct flange		PAC-KH110F	PAC-KH110F	PAC-KH110F	PAC-KH110F	
	Installation		Details on foundation work, duct work, insulation work, electrical wiring, power source switch, and other items shall be referred to the Installation Manual.				
Note :			*1 Nominal cooling conditions		*2 Nominal heating conditions		
Indoor :			27°CDB/19°CWB (81°FDB/66°FWB)		20°CDB (68°FDB)		
Outdoor :			35°CDB (95°FDB)		7°CDB/6°CWB (45°FDB/43°FWB)		
Pipe length :			7.5 m (24-9/16 ft)		7.5 m (24-9/16 ft)		
Level difference :			0 m (0 ft)		0 m (0 ft)		
			* Nominal conditions *1, *2 are subject to JIS B8615-1.		Unit converter		
			* Due to continuing improvement, above specification may be subject to change without notice.		BTU/h = kW x 3.412		
			*3 The values are measured at the factory setting of external static pressure.		cfm = m ³ /min x 35.31		
					lbs = kg / 0.4536		
					*Above specification data is subject to rounding variation.		

1. SPECIFICATIONS

Ceiling cassette (2-way flow type)

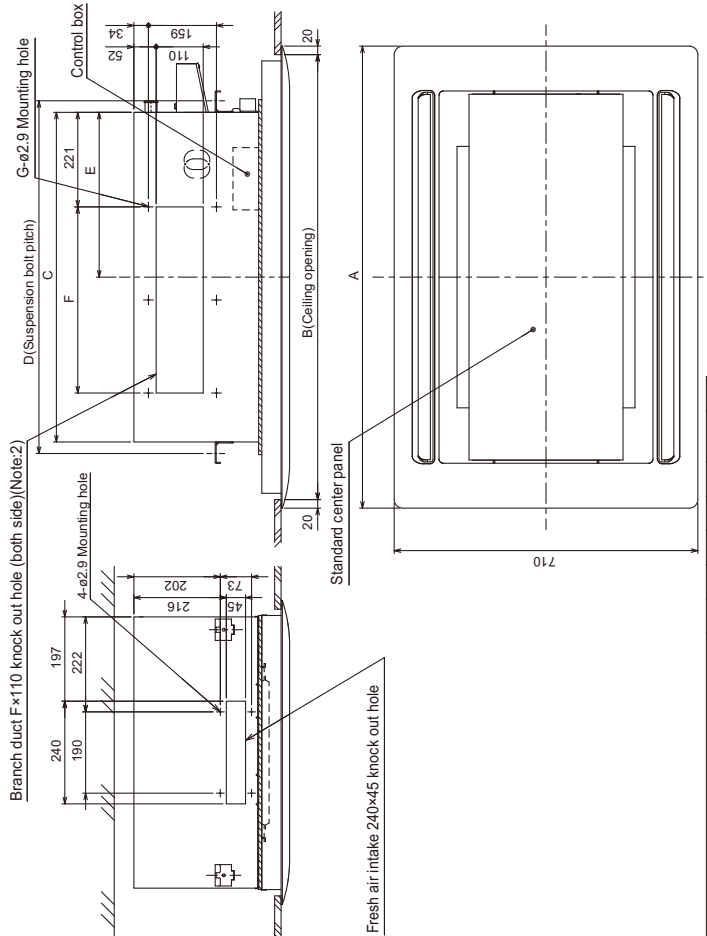
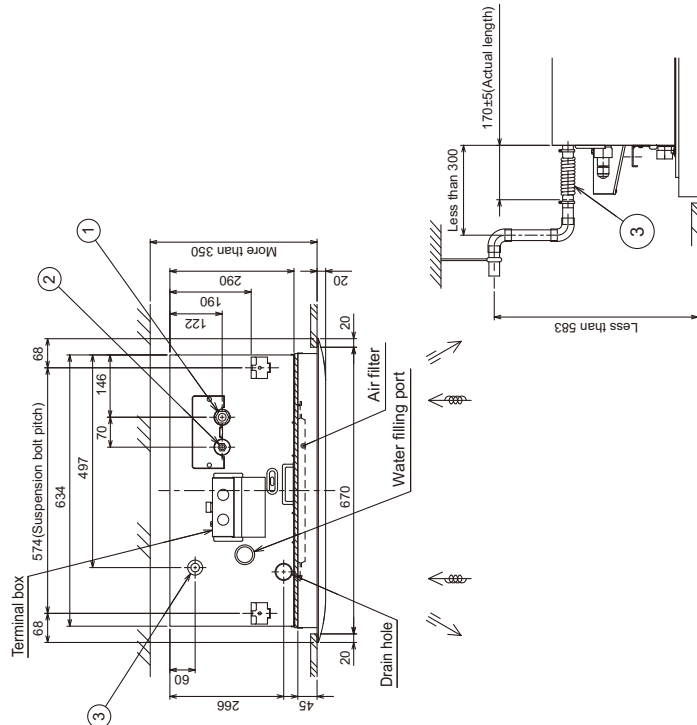
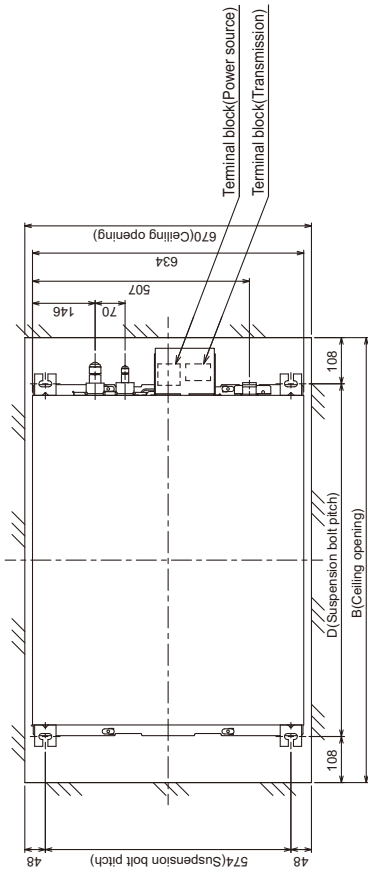
Model		PLFY-P50VLMD-E	PLFY-P63VLMD-E	PLFY-P80VLMD-E	PLFY-P100VLMD-E	PLFY-P125VLMD-E	
Power source		1-phase 220-240V 50Hz, 1-phase 220-230V 60Hz					
Cooling capacity (Nominal)	*1 kW	5.6	7.1	9.0	11.2	14.0	
	*1 BTU / h	19,100	24,200	30,700	38,200	47,800	
	*3 Power input kW	0.082 / 0.086	0.101 / 0.105	0.147 / 0.156	0.157 / 0.186	0.28 / 0.28	
	*3 Current input A	0.41 / 0.43	0.49 / 0.51	0.72 / 0.74	0.75 / 0.88	1.35 / 1.35	
Heating capacity (Nominal)	*2 kW	6.3	8.0	10.0	12.5	16.0	
	*2 BTU / h	21,500	27,300	34,100	42,700	54,600	
	*3 Power input kW	0.075 / 0.080	0.094 / 0.099	0.140 / 0.150	0.150 / 0.180	0.27 / 0.27	
	*3 Current input A	0.35 / 0.38	0.43 / 0.46	0.66 / 0.69	0.69 / 0.83	1.33 / 1.33	
External finish		Unit : Galvanized					
External dimension H x W x D		290 x 946 x 634 11-7/16 x 37-1/4 x 25		290 x 1,446 x 634 11-7/16 x 56-15/16 x 25		290 x 1,708 x 606 11-7/16 x 67-1/4 x 23-7/8	
Net weight		27 (60)	28 (62)	44 (98)	47 (104)	56 (124)	
Decoration panel	Model	CMP-63VLW-C	CMP-63VLW-C	CMP-100VLW-C	CMP-100VLW-C	CMP-125VLW-C	
	External finish	ABS, MUNSELL (6.4Y 8.9/0.4), include Service Panel : Galvanized, MUNSELL (6.4Y 8.9/0.4)					
	Dimension	20 x 1,250 x 710		20 x 1,750 x 710		20 x 2,010 x 710	
	H x W x D	13/16 x 49-1/4 x 28		13/16 x 68-15/16 x 28		13/16 x 79-3/16 x 28	
	Net weight	7.5 (17)		12.5 (28)		13.0 (29)	
Heat exchanger		Cross fin					
FAN	Type x Quantity	Turbo fan x 1	Turbo fan x 1	Turbo fan x 2	Turbo fan x 2	Sirocco fan x 4	
	External static press.	Pa	0	0	0	0	0
		mmHzO	0	0	0	0	0
	Motor type		1-phase induction motor				
	Motor output	0.020 (at 240V)	0.020 (at 240V)	0.020 x 2 (at 240V)	0.030 x 2 (at 240V)	0.078 x 2 (at 240V)	
	Driving mechanism		Direct-driven by motor				
	Airflow rate (Low-Mid-High)	m ³ / min	9.0 - 11.0 - 12.5	10.0 - 13.0 - 15.5	15.5 - 18.5 - 22.0	17.5 - 21.0 - 25.0	24.0 - 27.0 - 30.0 - 33.0
		L / s	150 - 183 - 208	167 - 217 - 258	258 - 308 - 367	292 - 350 - 417	400 - 450 - 500 - 550
cfm		318 - 388 - 441	353 - 459 - 547	547 - 653 - 777	618 - 742 - 883	848 - 953 - 1,059 - 1,165	
Sound pressure level (Low-Mid-High) (measured in anechoic room)	*3 dB <A>	31 - 34 - 37 (220, 240V)	32 - 37 - 39 (220, 240V)	33 - 36 - 39 (220, 240V)	36 - 39 - 42 (220, 240V)	40 - 42 - 44 - 46 (220, 240V)	
	*3 dB <A>	32 - 35 - 38 (230V)	33 - 38 - 40 (230V)	34 - 37 - 40 (230V)	37 - 41 - 43 (230V)	40 - 42 - 44 - 46 (230V)	
Insulation material		Polystyrene foam, Polyethylene foam, Urethane foam					
Air filter		PP honeycomb fabric (long life filter)				Synthetic fiber unwoven cloth filter (long life)	
Protection device		Fuse					
Refrigerant control device		LEV					
Connectable outdoor unit		R410A CITY MULTI					
Diameter of refrigerant pipe	Liquid (R410A)	mm (in.)	ø6.35 (ø1/4) Flare	ø9.52 (ø3/8) Flare	ø9.52 (ø3/8) Flare	ø9.52 (ø3/8) Flare	
	Gas (R410A)	mm (in.)	ø12.7 (ø1/2) Flare	ø15.88 (ø5/8) Flare	ø15.88 (ø5/8) Flare	ø15.88 (ø5/8) Flare	
Field drain pipe size		O.D. 32mm (1-1/4)					
Drawing	External	IU-W275-920	IU-W275-920	IU-W275-920	IU-W275-920	IU-W275-921	
	Wiring	IU-W653-952	IU-W653-952	IU-W653-952	IU-W653-952	IU-W275-927	
	Refrigerant cycle	-	-	-	-	-	
Standard attachment	Document	Installation Manual, Instruction Book					
	Accessory	Drain hose I.D. 32mm (1-1/4) (flexible joint)					
Remark	Optional parts						
	Decoration panel	CMP-63VLW-C	CMP-63VLW-C	CMP-100VLW-C	CMP-100VLW-C	CMP-125VLW-C	
	OA duct flange	PAC-KH110F	PAC-KH110F	PAC-KH110F	PAC-KH110F	-	
Installation		Details on foundation work, duct work, insulation work, electrical wiring, power source switch, and other items shall be referred to the Installation Manual.					
Note :		<p>*1 Nominal cooling conditions *2 Nominal heating conditions</p> <p>Indoor : 27°CDB/19°CWB (81°FDB/66°FWB) 20°CDB (68°FDB)</p> <p>Outdoor : 35°CDB (95°FDB) 7°CDB/6°CWB (45°FDB/43°FWB)</p> <p>Pipe length : 7.5 m (24-9/16 ft) 7.5 m (24-9/16 ft)</p> <p>Level difference : 0 m (0 ft) 0 m (0 ft)</p>				<p>Unit converter</p> <p>BTU/h = kW x 3.412</p> <p>cfm = m³/min x 35.31</p> <p>lbs = kg / 0.4536</p>	
* Nominal conditions *1, *2 are subject to JIS B8615-1.		* Due to continuing improvement, above specification may be subject to change without notice.				*Above specification data is subject to rounding variation.	
*3 The values are measured at the factory setting of external static pressure.							

PLFY-P20, 25, 32, 40, 50, 63, 80, 100VLMD-E

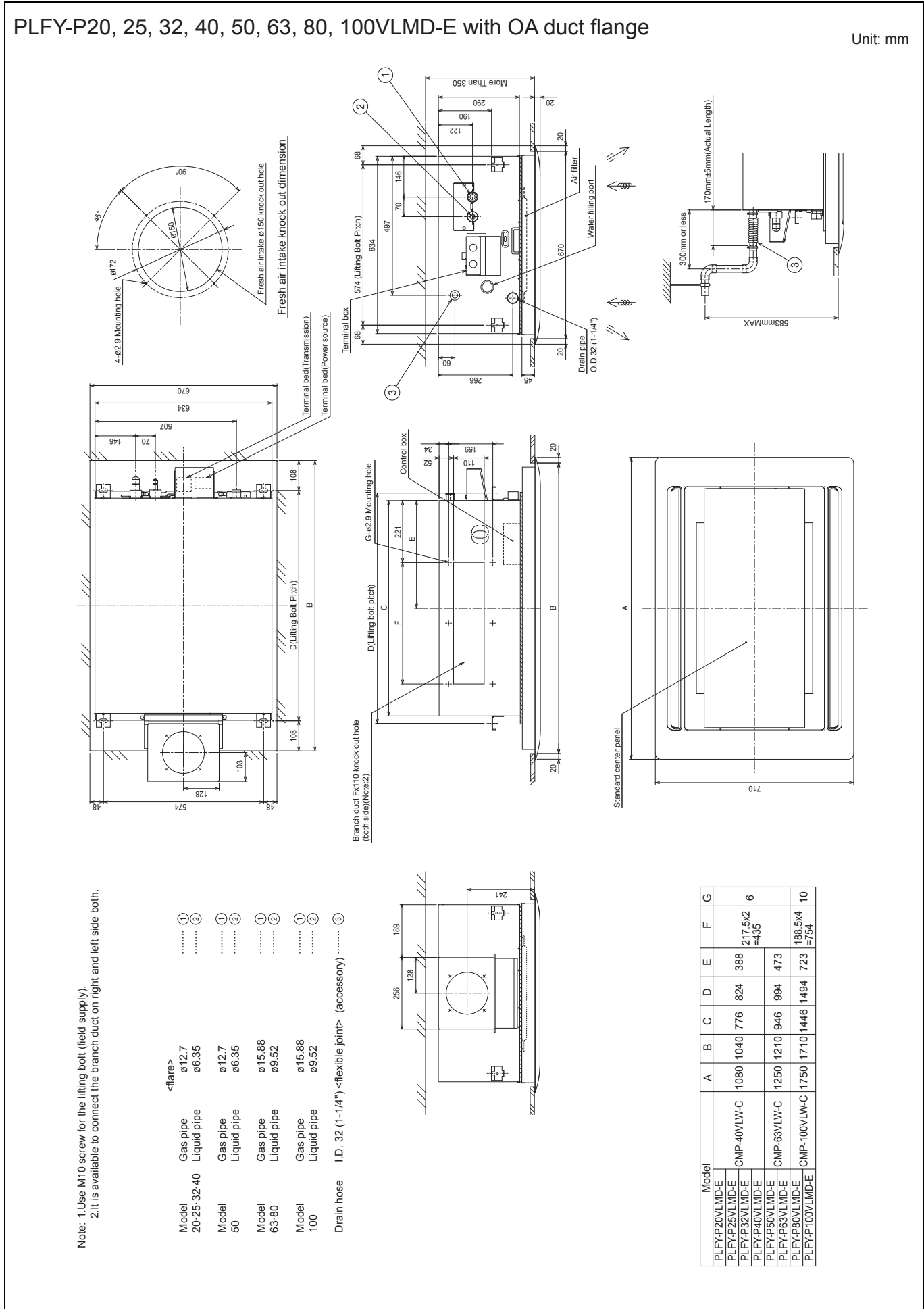
Unit: mm

Note: 1. Use M10 screw for the suspension bolt (field supply).
 2. It is available to connect the branch duct on right and left side both.

- | | | | | | | |
|----------------|-----------------------|-------|-------|--------|-------|-------------|
| | | ① | ② | ① | ② | ③ |
| | <flare> | ø12.7 | ø6.35 | ø15.88 | ø9.52 | (accessory) |
| Model | Gas pipe:LP | | | | | |
| 20-25-32-40-50 | Liquid pipe:HP | | | | | |
| Model | Gas pipe:LP | | | | | |
| 63-80-100 | Liquid pipe:HP | | | | | |
| Drain hose | VP-25<flexible joint> | | | | | (accessory) |



Model	A	B	C	D	E	F	G
PLFY-P20VLMD-E	1080	1040	776	824	388	217.5X2	6
PLFY-P25VLMD-E						≈435	
PLFY-P32VLMD-E							
PLFY-P40VLMD-E	1250	1210	946	994	473		
PLFY-P50VLMD-E							
PLFY-P63VLMD-E	1750	1710	1446	1494	723	188.5X4	10
PLFY-P80VLMD-E						≈754	
PLFY-P100VLMD-E							

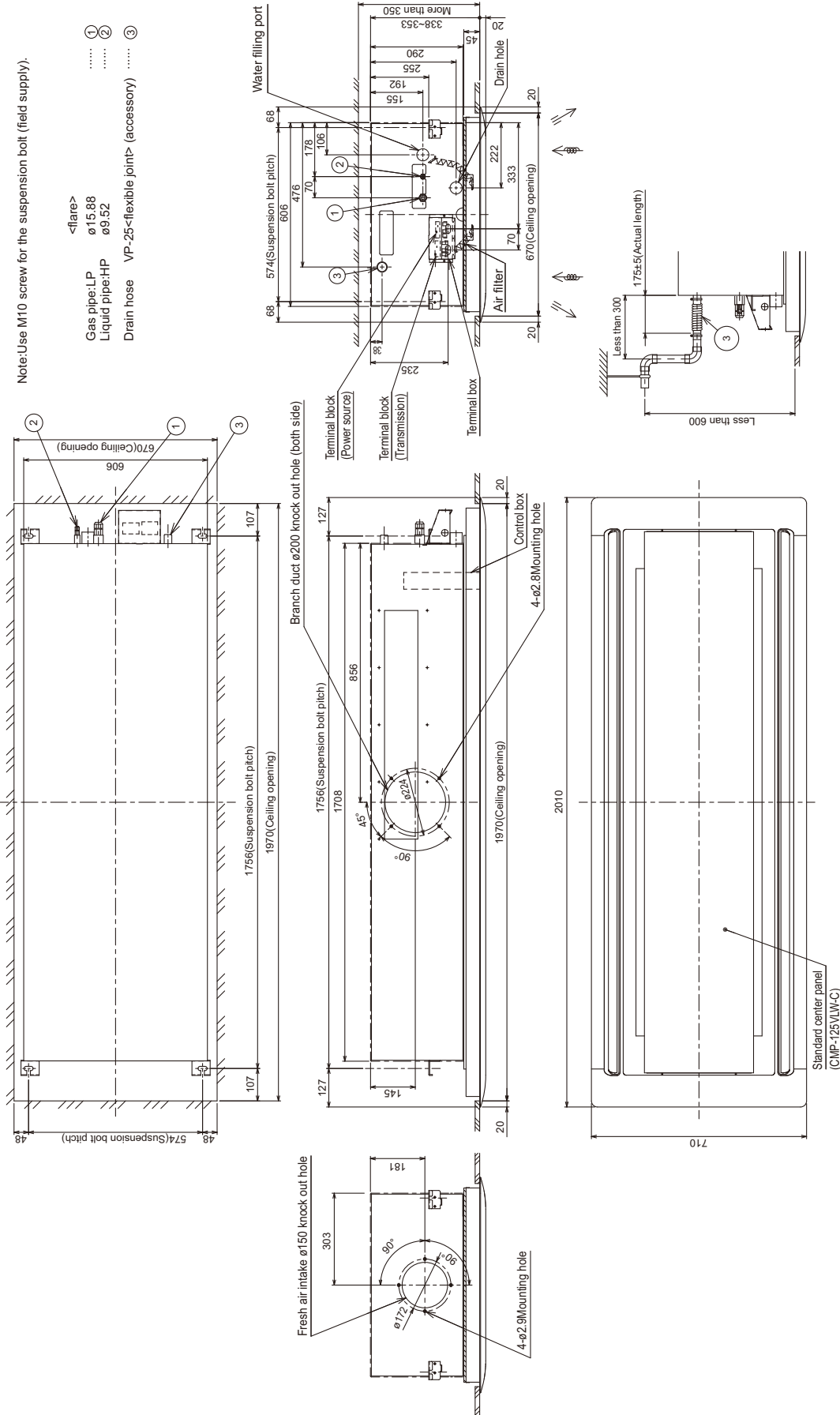


PLFY-P125VLMD-E

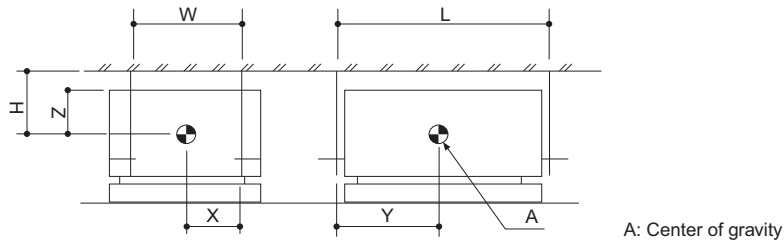
Unit: mm

Note: Use M10 screw for the suspension bolt (field supply).

- <flare>
- Gas pipe: LP ①
- Liquid pipe: HP ②
- Drain hose VP-25<flexible joint> (accessory) ③



PLFY-P20, 25, 32, 40, 50, 63, 80, 100, 125VLMD-E



Model name	W	L	H	X	Y	Z
PLFY-P20VLMD-E	574 [22-5/8]	824 [32-15/32]	172 [6-25/32]	287 [11-5/16]	370 [14-19/32]	160 [6-5/16]
PLFY-P25VLMD-E	574 [22-5/8]	824 [32-15/32]	172 [6-25/32]	287 [11-5/16]	370 [14-19/32]	160 [6-5/16]
PLFY-P32VLMD-E	574 [22-5/8]	824 [32-15/32]	172 [6-25/32]	287 [11-5/16]	370 [14-19/32]	160 [6-5/16]
PLFY-P40VLMD-E	574 [22-5/8]	824 [32-15/32]	172 [6-25/32]	287 [11-5/16]	370 [14-19/32]	160 [6-5/16]
PLFY-P50VLMD-E	574 [22-5/8]	994 [32-5/32]	172 [6-25/32]	287 [11-5/16]	445 [17-17/32]	160 [6-5/16]
PLFY-P63VLMD-E	574 [22-5/8]	994 [32-5/32]	172 [6-25/32]	287 [11-5/16]	445 [17-17/32]	160 [6-5/16]
PLFY-P80VLMD-E	574 [22-5/8]	1494 [58-27/32]	172 [6-25/32]	287 [11-5/16]	655 [25-13/16]	160 [6-5/16]
PLFY-P100VLMD-E	574 [22-5/8]	1494 [58-27/32]	172 [6-25/32]	287 [11-5/16]	655 [25-13/16]	160 [6-5/16]
PLFY-P125VLMD-E	574 [22-5/8]	1756 [69-5/32]	203 [8]	287 [11-5/16]	758 [29-27/32]	181 [7-5/32]

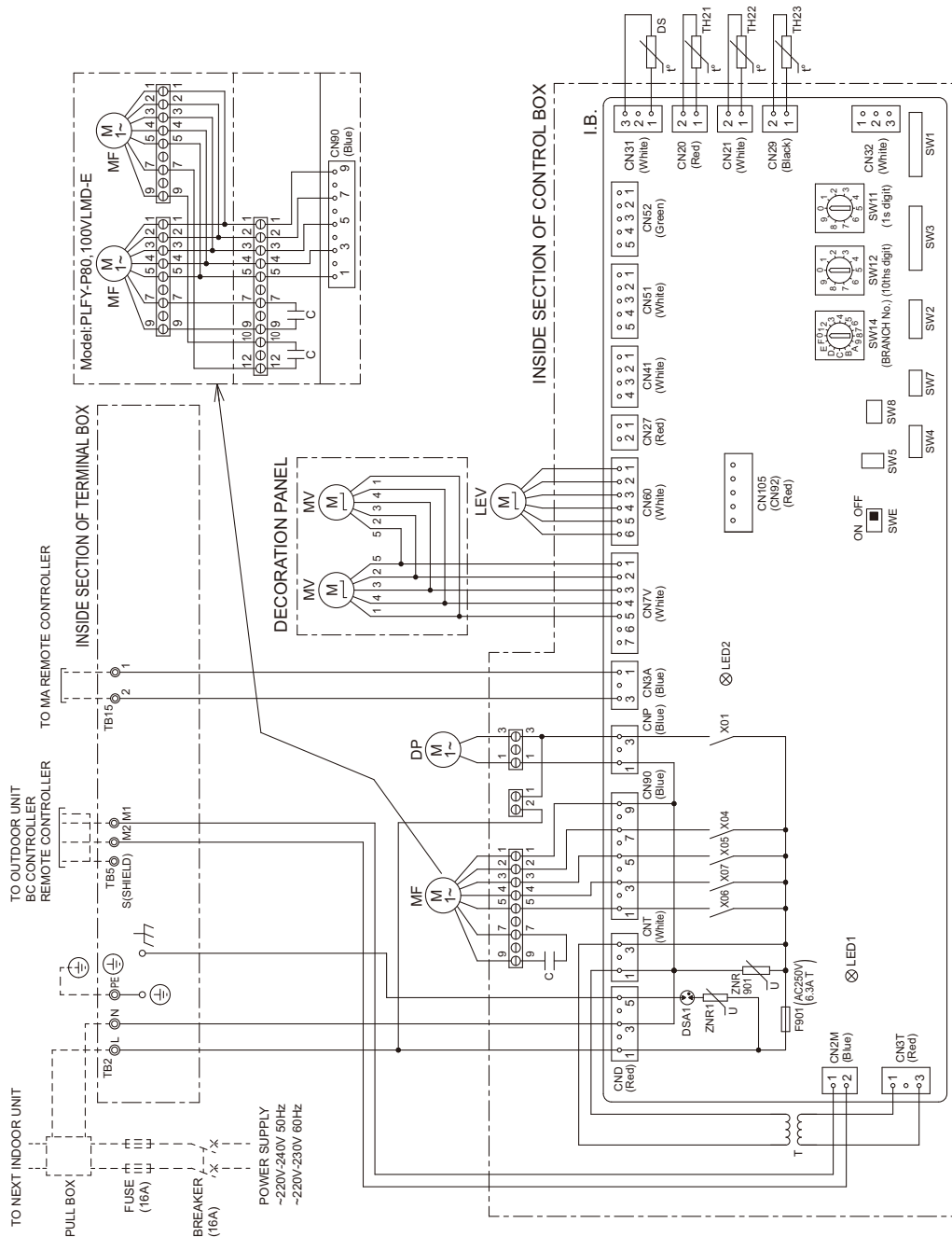
PLFY-P20, 25, 32, 40, 50, 63, 80, 100VLMD-E

SYMBOL EXPLANATION

SYMBOL	NAME
MF	Fan motor
LB	Indoor controller board
TB2	Power source terminal block
TB5	Transmission terminal block
TB15	Transmission terminal block
F901	Fuse AC250V 6.3A T
ZNR1,ZNR901	Varistor
DSA1	Arrester
T	Transformer
C	Capacitor
MV	Motor for vane
DP	Drain pump
DS	Drain sensor
X01,X04~X07	Aux. relay
LEV	Electronic linear expan. valve
TH21	Thermistor (inlet air temp.detection)
TH22	Thermistor (piping temp.detection/liquid)
TH23	Thermistor (piping temp.detection/gas)
SW11	Switch (1s digit address set)
SW12	Switch (10ths digit address set)
SW14	Switch (BRANCH No.)
SW1	Switch(for mode selection)
SW2	Switch(for capacity code)
SW3	Switch(for mode selection)
SW4	Switch(for model selection)
SW5	Switch(for voltage selection)
SW7	Switch(for model selection)
SW6	Switch(for mode selection)
CN27	Connector (damper)
CN32	Connector (remote switch)
CN41	Connector (HA terminal-A)
CN51	Connector (centrally control)
CN52	Connector (remote indication)
CN105,CN92	Connector (11 terminal)
SWE	Connector (emergency operation)

OPERATION OF LED FOR INDOOR CIRCUIT BOARD SERVICE

SYMBOL	OPERATION
LED1	LED operation under normal state
LED2	At applying main power source → Lighting
	At receiving MA transmission power source → Lighting



NOTE: 1. The wirings to TB2, TB5, TB15 shown in dotted line are field work.
 2. Mark ⊗ indicates terminal bed, ⊞ connector, ⊠ board insertion connector or fastening connector of control board.

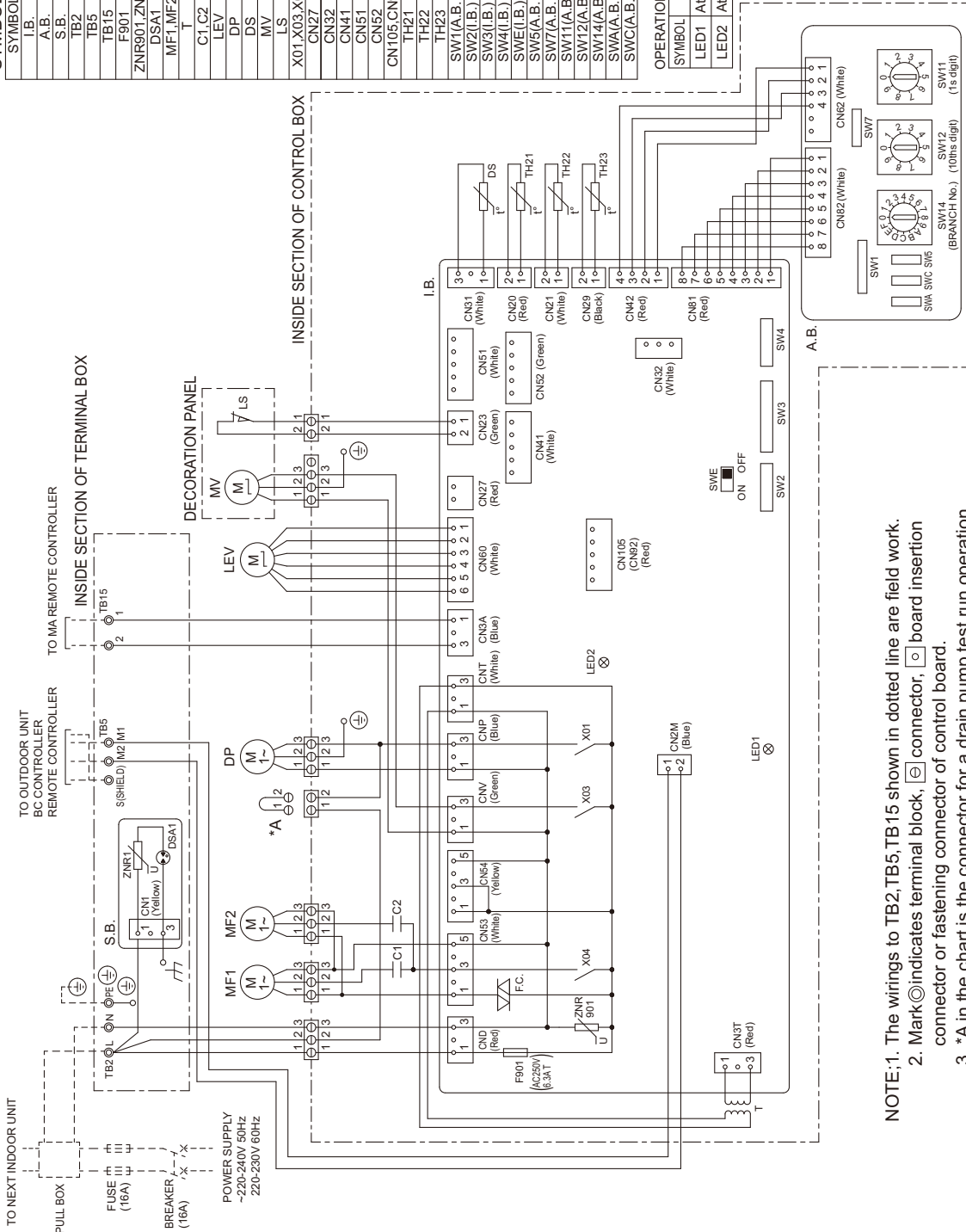
PLFY-P125VLMD-E

SYMBOL EXPLANATION

SYMBOL	NAME
I.B.	Indoor controller board
A.B.	Address board
S.B.	Surge absorber board
TB2	Power source terminal block
TB5	Transmission terminal block
TB15	Transmission terminal block
F901	Fuse AC250V 6.3A T
ZNR901.ZNR1	Varistor
DSA1	Arrester
MFT1,MF2	Fan motor
T	Transformer
C1,C2	Capacitor (for MF1,MF2) 5.0uF
LEV	Electronic linear expan. valve
DP	Drain pump
DS	Drain sensor
MV	Motor for vanes(with limit switch)
LS	Limit Switch(MV built in)
X01,X03,X04	Aux. relay
CN27	Connector (Dampner)
CN32	Connector (Remote switch)
CN41	Connector (HA terminal-A)
CN51	Connector (Centrally control)
CN52	Connector (Remote indication)
CN105,CN92	Connector (IT terminal)
TH21	Thermistor (inlet air temp.detection)
TH22	Thermistor (piping temp.detection/liquid)
TH23	Thermistor (piping temp.detection/gas)
SW1(A.B.)	Switch(for mode selection)
SW2(I.B.)	Switch(for capacity code)
SW3(I.B.)	Switch(for mode selection)
SW4(I.B.)	Switch(for model selection)
SW5(A.B.)	Switch(for emergency operation)
SW7(A.B.)	Switch(for voltage selection)
SW7(A.B.)	Switch(for model selection)
SW12(A.B.)	Switch (1s digit address set)
SW14(A.B.)	Switch (10ths digit address set)
SWA(A.B.)	Switch (BRANCH No.)
SWC(A.B.)	Switch(for mode selection)
SWC(A.B.)	Switch(for mode selection)

OPERATION OF LED FOR INDOOR CIRCUIT BOARD SERVICE

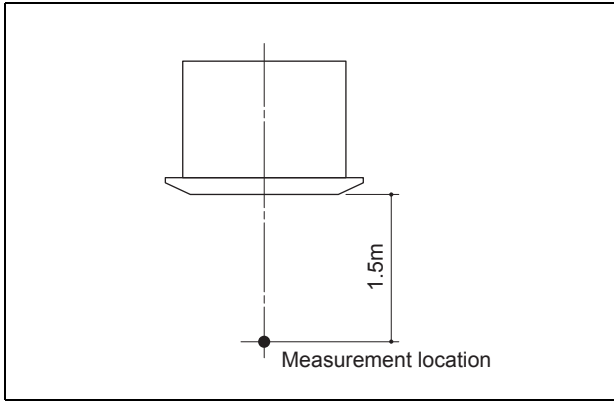
SYMBOL	LED operation under normal state
LED1	At applying main power source → Lighting
LED2	At receiving MA transmission power source → Lighting



- NOTE:1. The wirings to TB2, TB5, TB15 shown in dotted line are field work.
 2. Mark ⊙ indicates terminal block, ⊞ connector, ⊠ board insertion connector or fastening connector of control board.
 3. *A in the chart is the connector for a drain pump test run operation. (The Drain Pump operates continuously if the connector is inserted and the power is supplied.)
 After the test run, make sure to remove the *A connector.

5-1. Sound levels

PLFY-P-VLMD-E



* Measured in anechoic room

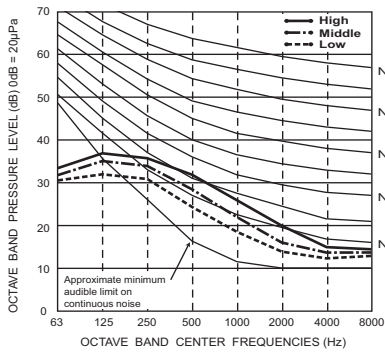
Sound level at anechoic room : Low-Mid-High

	Sound level dB (A)	
	220,240V	230V
PLFY-P20VLMD-E		
PLFY-P25VLMD-E	27-30-33	28-31-34
PLFY-P32VLMD-E		
PLFY-P40VLMD-E	29-33-36	30-34-37
PLFY-P50VLMD-E	31-34-37	32-35-38
PLFY-P63VLMD-E	32-37-39	33-38-40
PLFY-P80VLMD-E	33-36-39	34-37-40
PLFY-P100VLMD-E	36-39-42	37-41-43
PLFY-P125VLMD-E	40-42-44-46	

5-2. NC curves

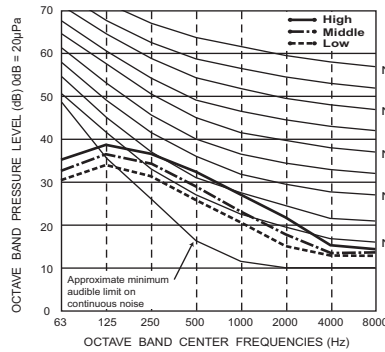
PLFY-P20,25VLMD-E

External static pressure : 0Pa
Power source : 220,240V, 50/60Hz



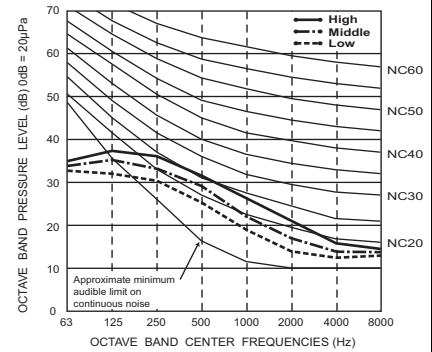
PLFY-P20,25VLMD-E

External static pressure : 0Pa
Power source : 230V, 50/60Hz



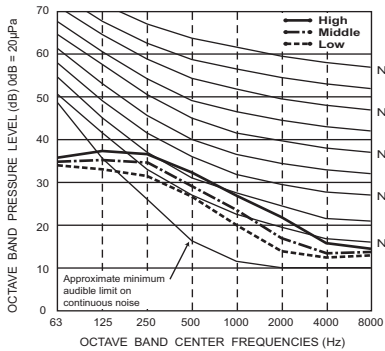
PLFY-P32VLMD-E

External static pressure : 0Pa
Power source : 220,240V, 50/60Hz



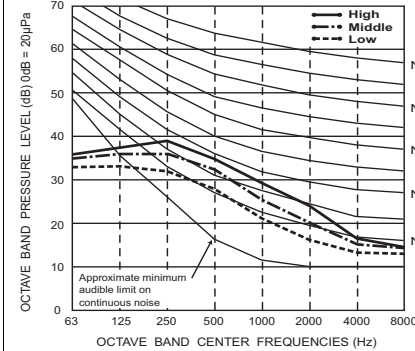
PLFY-P32VLMD-E

External static pressure : 0Pa
Power source : 230V, 50/60Hz



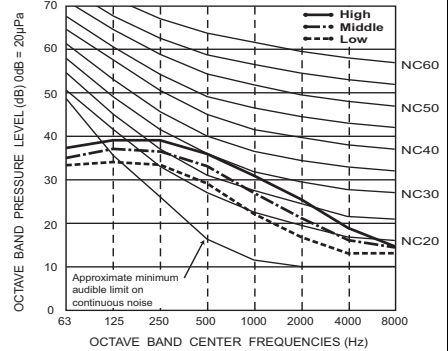
PLFY-P40VLMD-E

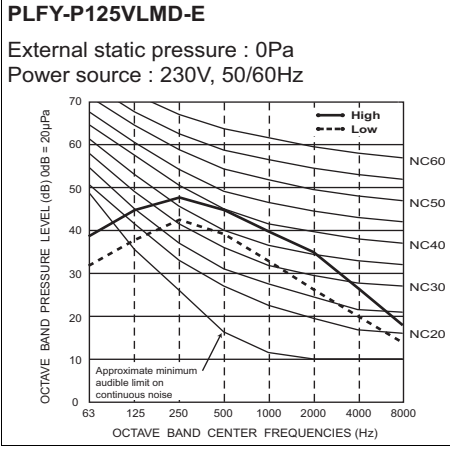
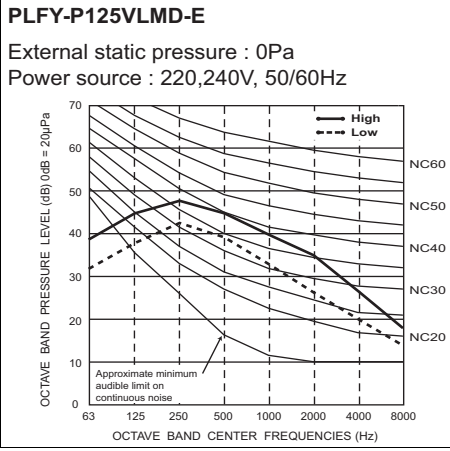
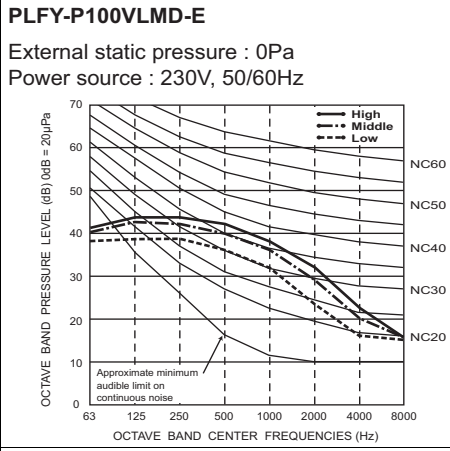
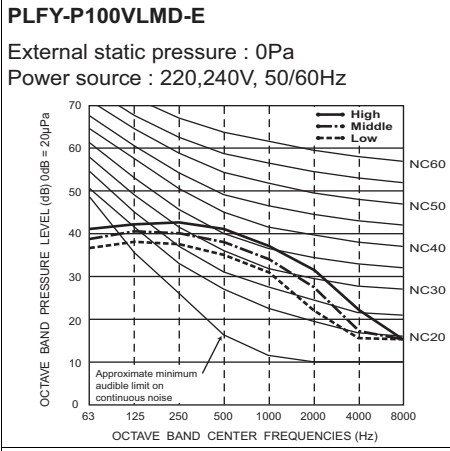
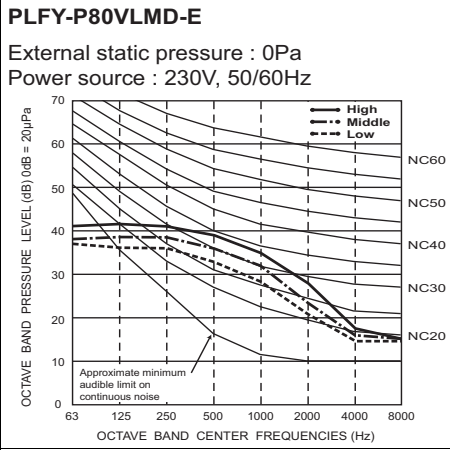
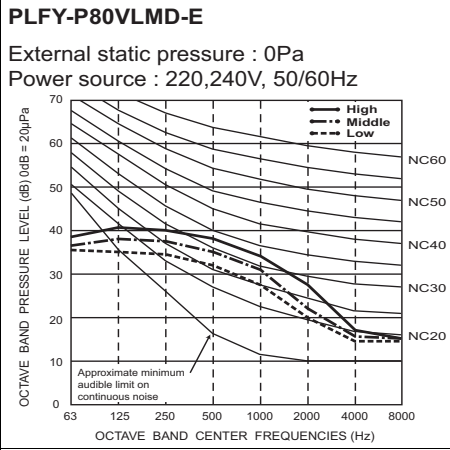
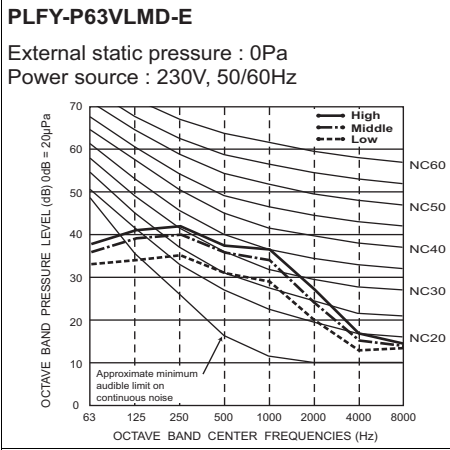
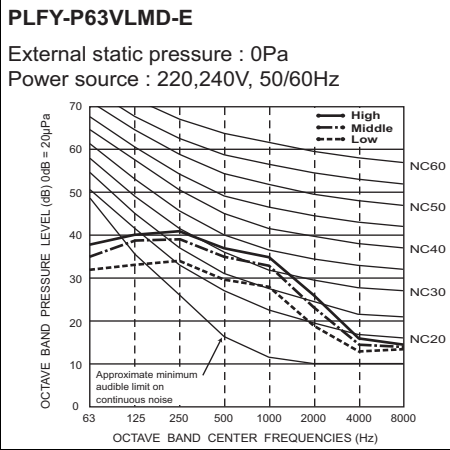
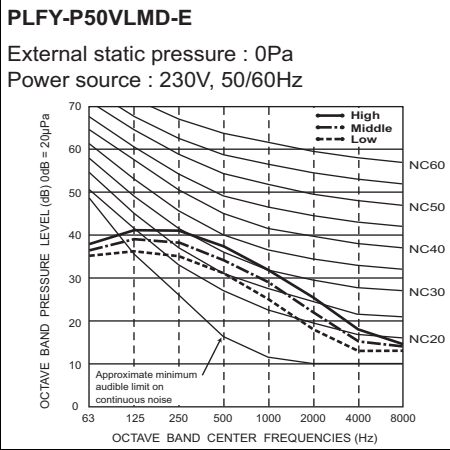
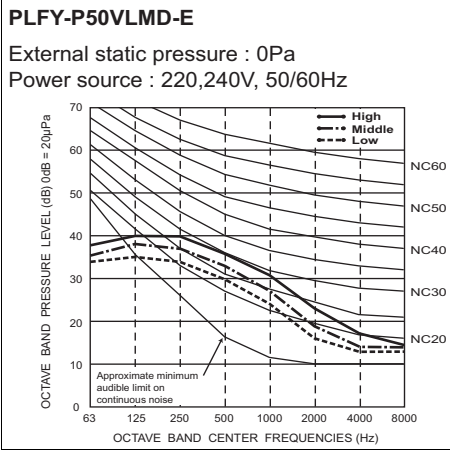
External static pressure : 0Pa
Power source : 220,240V, 50/60Hz



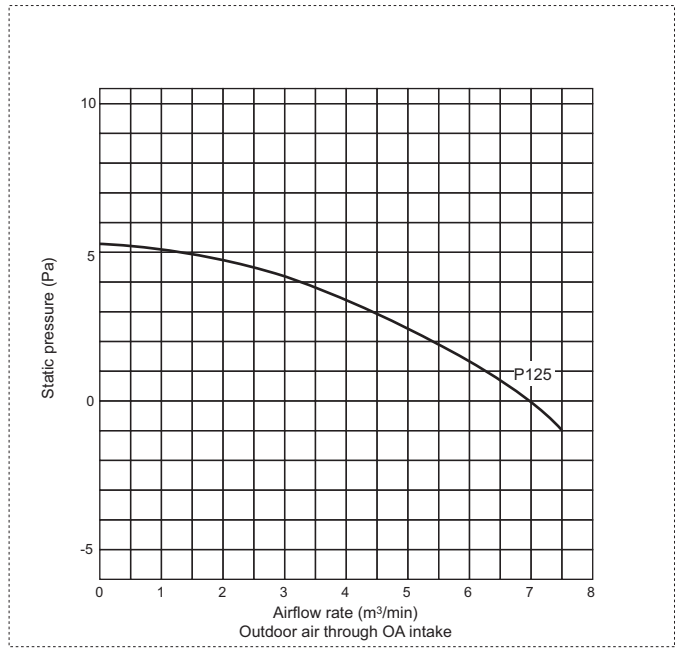
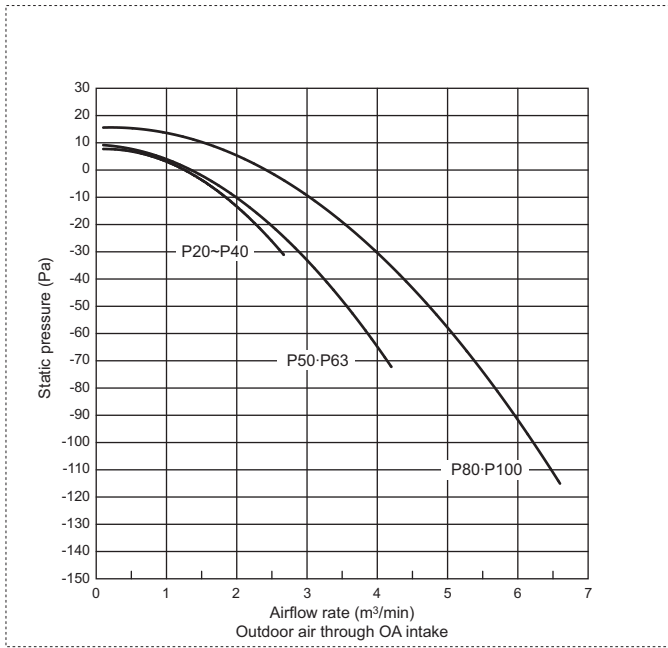
PLFY-P40VLMD-E

External static pressure : 0Pa
Power source : 230V, 50/60Hz





PLFY-P-VLMD-E



Please confirm that inlet-air temperature (which is mixed with outdoor air) is in the following operating temperature range.

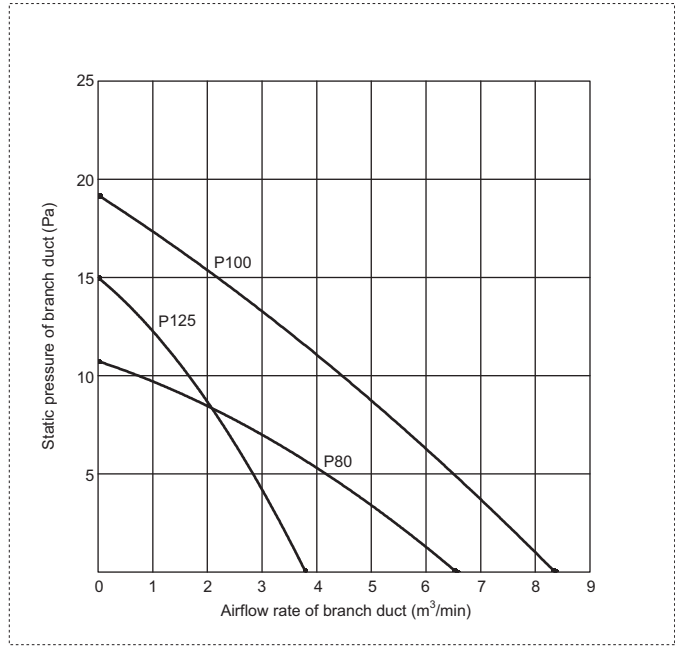
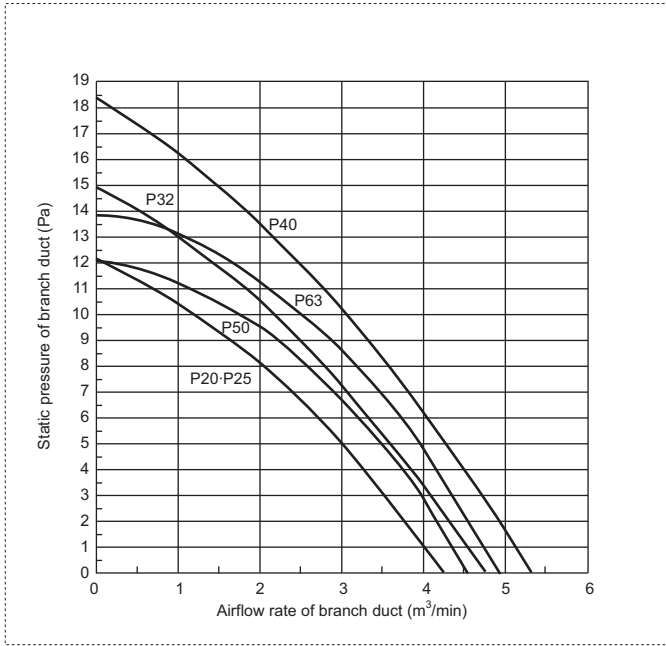
PLFY-P-VLMD-E: Operating temperature range

Mode	Temperature range of inlet air
Cooling	15°C~24°C(Wet bulb)
Dry	
Heating	15°C~27°C(Dry bulb)

*Relative humidity range is 30~80%.

7. BRANCH DUCT INTAKE-STATIC PRESSURE CURVES

Ceiling cassette (2-way flow type)



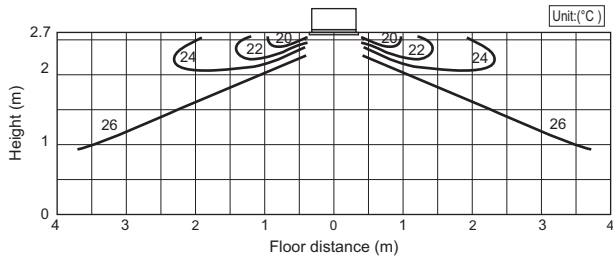
PLFY-P-VLMD-E

8-1. Temperature distributions

PLFY-P20-125VLMD-E

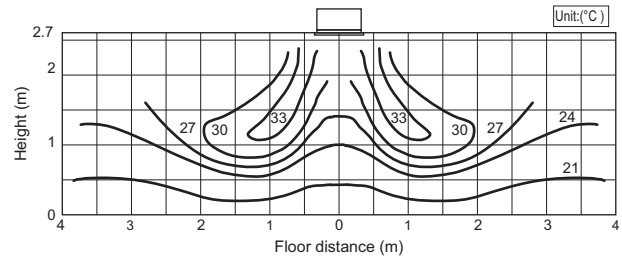
<Cooling mode>

Airflow angle : Horizontal
 Room temp.: 27°C
 Airflow rate : High



<Heating mode>

Airflow angle : Downward
 Room temp.: 20°C
 Airflow rate : High



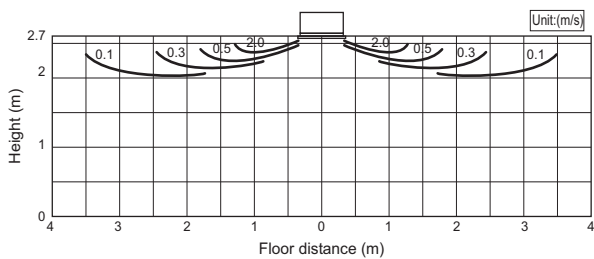
Note : These figures show typical temperature distributions in the conditions above. In the actual installation, they may differ from these figures under the influence of air temperature conditions, ceiling height, cooling/heating load, obstacles, etc.

8-2. Airflow distributions

PLFY-P20-125VLMD-E

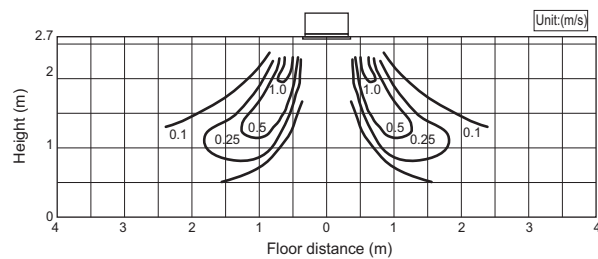
<Cooling mode>

Airflow angle : Horizontal
 Room temp.: 27°C
 Airflow rate : High



<Heating mode>

Airflow angle : Downward
 Room temp.: 20°C
 Airflow rate : High



Note : These figures show typical airflow distributions in the conditions above. In the actual installation, they may differ from these figures under the influence of air temperature conditions, ceiling height, cooling/heating load, obstacles, etc.

9. ELECTRICAL CHARACTERISTICS

Ceiling cassette (2-way flow type)

Symbols: MCA (Max.Circuit Amps =1.25xFLA), FLA (Full Load Amps)
IFM (Indoor Fan Motor), Output (Fan motor rated output)

PLFY-P-VLMD-E	Power supply			IFM	
	Volts/Hz	Range +-10%	MCA(A) (50/60Hz)	Output (kW)	FLA(A) (50/60Hz)
PLFY-P20VLMD-E	220-240V/50Hz 220-230V/60Hz	Max.: 264V Min.: 198V	0.45/0.46	0.015	0.36/0.37
PLFY-P25VLMD-E			0.45/0.46	0.015	0.36/0.37
PLFY-P32VLMD-E			0.45/0.46	0.015	0.36/0.37
PLFY-P40VLMD-E			0.50/0.53	0.015	0.40/0.42
PLFY-P50VLMD-E			0.51/0.54	0.020	0.41/0.43
PLFY-P63VLMD-E			0.61/0.64	0.020	0.49/0.51
PLFY-P80VLMD-E			0.90/0.93	0.020×2	0.72/0.74
PLFY-P100VLMD-E			0.94/1.10	0.030×2	0.75/0.88
PLFY-P125VLMD-E			1.69/1.69	0.078×2	1.35/1.35

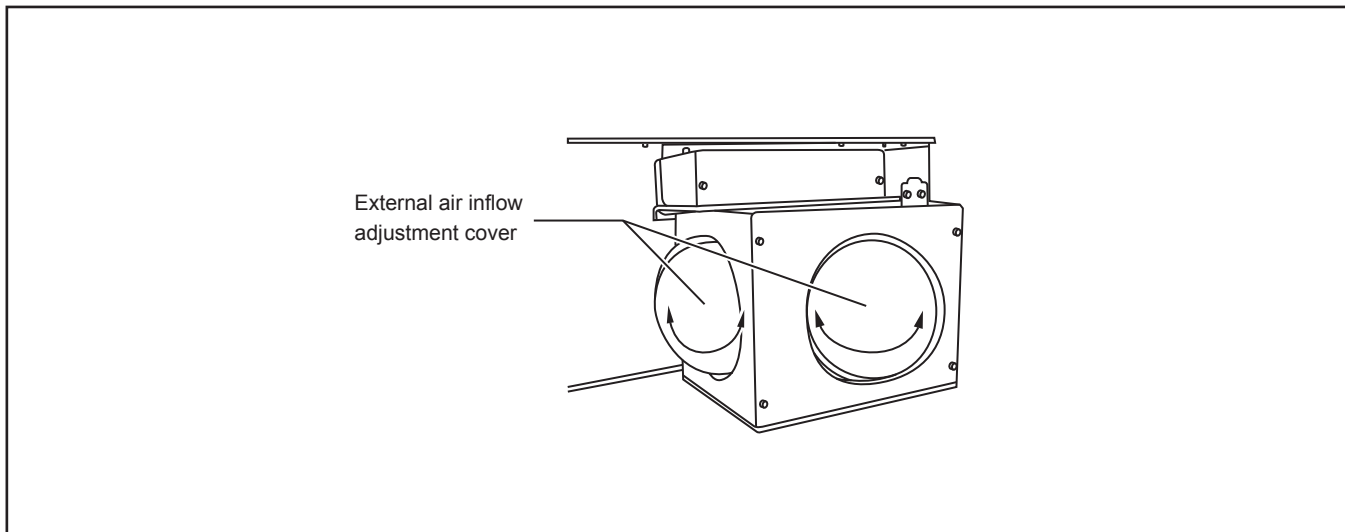
PLFY-P-VLMD-E

10-1. Optional parts line up for the Indoor unit

	OA duct flange
PLFY-P-VLMD-E	PAC-KH110F

PLFY-P-VLMD-E

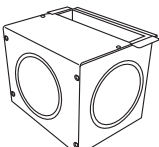
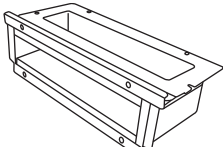

PLFY-P-VLMD-E



10-2. OA duct flange

OA duct flange PAC-KH110F makes outside fresh air ducting to the Indoor unit easier.

Material: Galvanized steel plate, with insulation sheet adhered.

Item	① External air intake ducting	② Ducting flange	③ PTT screws (4x10)
Quantity	1	1	10 (two spares)
Shape			

Detailed installation information should be referred to its Installation Manual.

⚠ Warning

- Do not use refrigerant other than the type indicated in the manuals provided with the unit and on the nameplate.
 - Doing so may cause the unit or pipes to burst, or result in explosion or fire during use, repair, or at the time of disposal of the unit.
 - It may also be in violation of applicable laws.
 - MITSUBISHI ELECTRIC CORPORATION cannot be held responsible for malfunctions or accidents resulting from the use of the wrong type of refrigerant.
- Our air conditioning equipment and heat pumps contain a fluorinated greenhouse gas, R410A.

MITSUBISHI ELECTRIC CORPORATION

www.MitsubishiElectric.com