

PARTS CATALOG

Series PLFY Ceiling Cassettes

R32
Indoor unit
[Model Name]

 PLFY-MS15VFM-E
 PLFY-MS15VFM-ET

 PLFY-MS20VFM-E
 PLFY-MS20VFM-ET

 PLFY-MS25VFM-E
 PLFY-MS25VFM-ET

 PLFY-MS32VFM-E
 PLFY-MS32VFM-ET

 PLFY-MS40VFM-E
 PLFY-MS40VFM-ET

 PLFY-MS50VFM-E
 PLFY-MS50VFM-ET

[Service Ref.]

 PLFY-MS15VFM-E.TH
 PLFY-MS15VFM-ET.TH

 PLFY-MS20VFM-E.TH
 PLFY-MS20VFM-ET.TH

 PLFY-MS25VFM-E.TH
 PLFY-MS25VFM-ET.TH

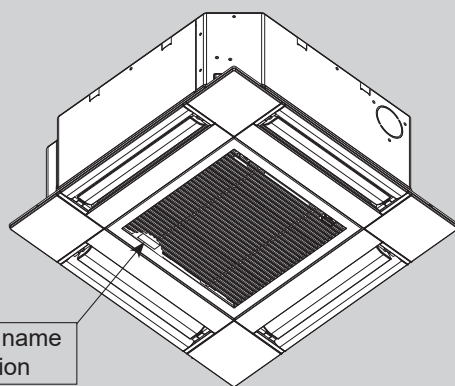
 PLFY-MS32VFM-E.TH
 PLFY-MS32VFM-ET.TH

 PLFY-MS40VFM-E.TH
 PLFY-MS40VFM-ET.TH

 PLFY-MS50VFM-E.TH
 PLFY-MS50VFM-ET.TH

Notes:

- This manual describes only service data of the indoor units.


INDOOR UNIT
CONTENTS

1. SERVICE PARTS LIST 2

SERVICE MANUAL (OCH822)
CITY MULTI

1

SERVICE PARTS LIST

GRILLE PARTS

SLP-2FA (Standard)

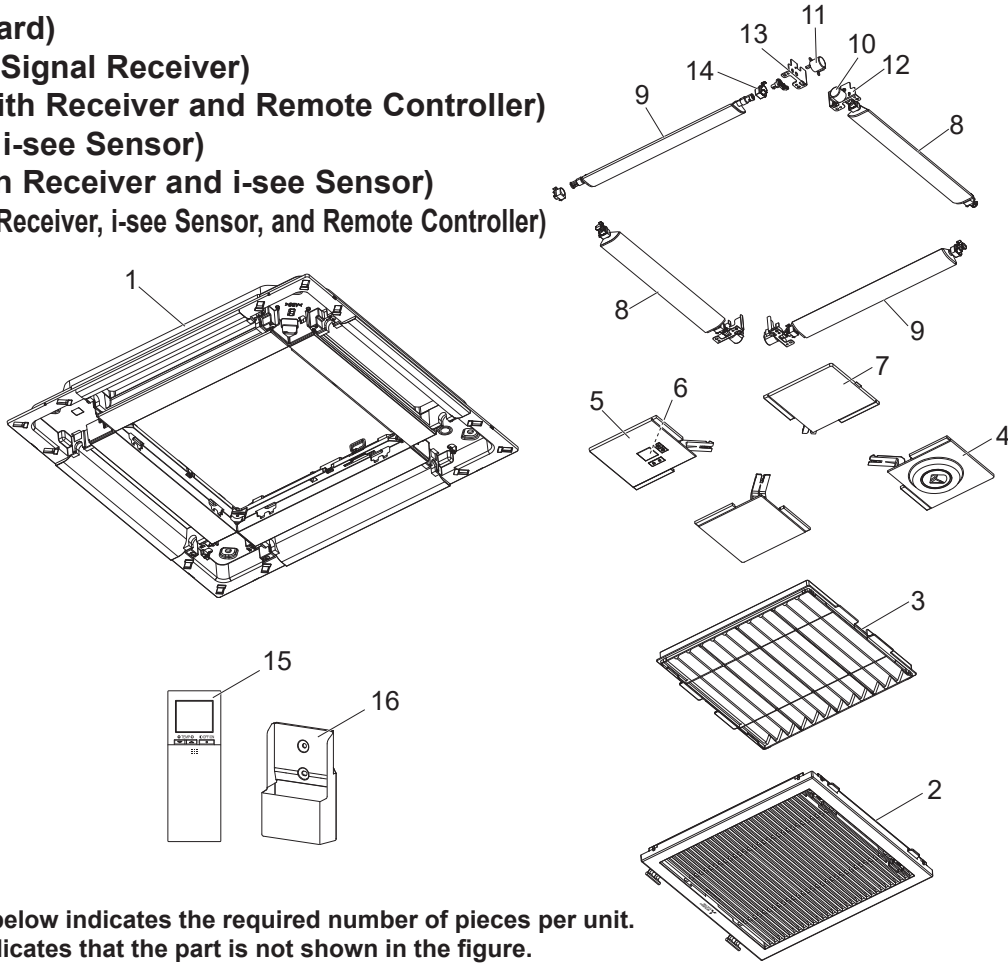
SLP-2FAL (with Signal Receiver)

SLP-2FALM2 (with Receiver and Remote Controller)

SLP-2FAE (with i-see Sensor)

SLP-2FALE (with Receiver and i-see Sensor)

SLP-2FALME2 (with Receiver, i-see Sensor, and Remote Controller)

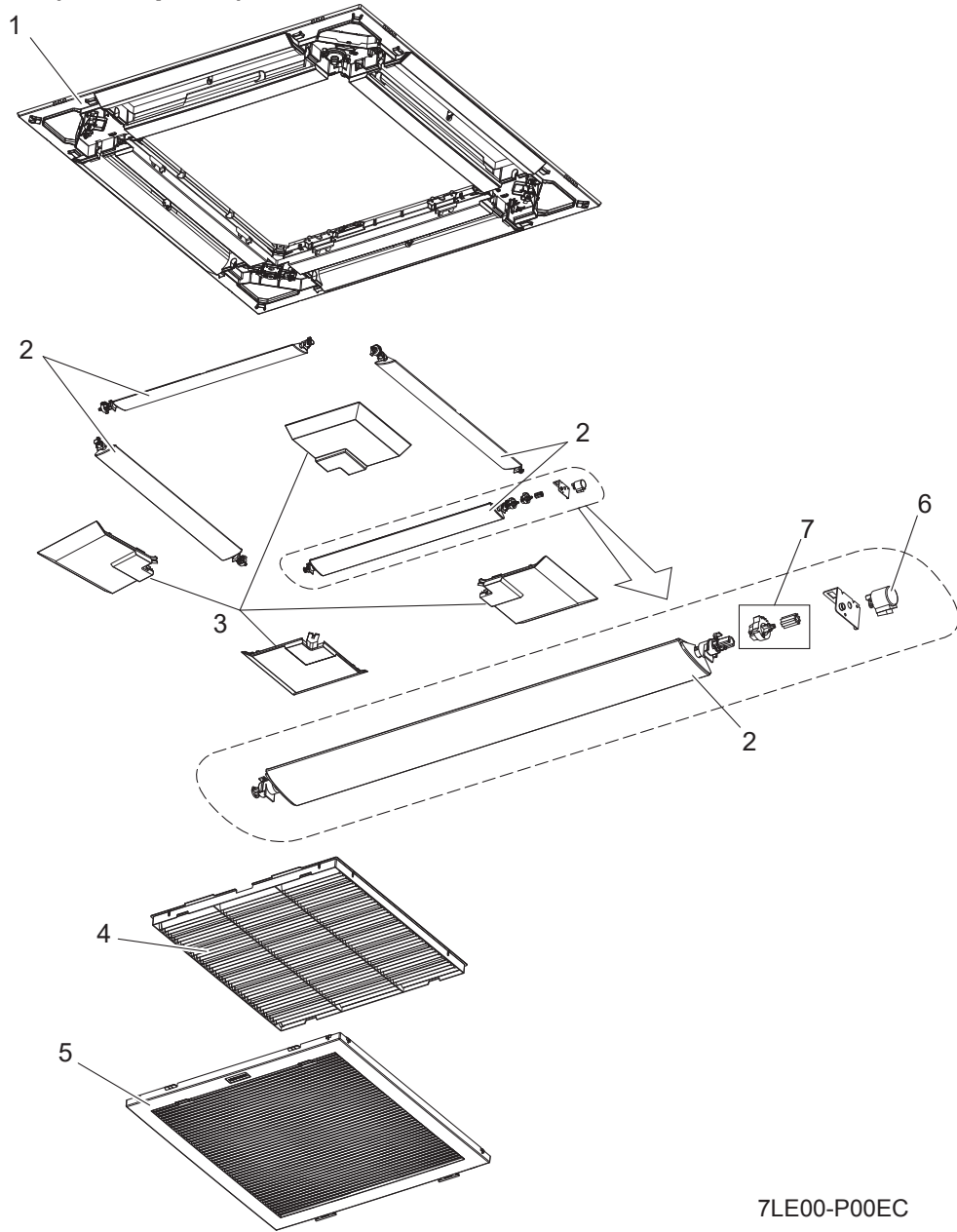


1. The part quantity below indicates the required number of pieces per unit.
2. The circled No. indicates that the part is not shown in the figure.

No.	Parts No.	Parts Name	SLP-2FA	SLP-2FAL	SLP-2FALM2	SLP-2FAE	SLP-2FALE	SLP-2FALME2	Wiring Diagram Symbol	Remarks
1	E27 C26 003	AIR OUTLET GRILLE	1	1	1	1	1	1		
2	E27 C26 010	INTAKE GRILLE	1	1	1	1	1	1		
3	E27 C26 100	AIR FILTER	1	1	1	1	1	1		
4	E27 C29 975	CORNER PANEL (i-see Sensor)				1	1	1		
5	E27 C28 975	CORNER PANEL (Signal Receiver)		1	1		1	1		
6	E27 C27 317	WIRELESS REMOTE CONTROLLER BOARD		1	1		1	1	W.B	
7	E27 C26 975	CORNER PANEL	4	3	3	3	2	2		Includes safety strap
8	E27 C26 037	AUTO VANE -1	2	2	2	2	2	2		GREEN
9	E27 C27 037	AUTO VANE -2	2	2	2	2	2	2		BLUE
10	E27 C26 303	VANE MOTOR-1	2	2	2	2	2	2		GREEN
11	E27 C27 303	VANE MOTOR-2	2	2	2	2	2	2		BLUE
12	E27 C26 946	COUPLING-1	2	2	2	2	2	2		GREEN
13	E27 C27 946	COUPLING-2	2	2	2	2	2	2		BLUE
14	E27 C26 044	VANE BUSH	8	8	8	8	8	8		
15	E27 D44 426	WIRELESS REMOTE CONTROLLER			1			1		
16	E27 D44 083	HOLDER			1			1		
⑰	E27 C26 033	WIRE HOOK	2	2	2	2	2	2		
⑱	E27 C28 087	JUNCTION CABLE (Signal Receiver)		1	1		1	1		
⑲	E27 C27 087	JUNCTION CABLE (i-see Sensor)				1	1	1		



PLP-6EAB (Black panel)

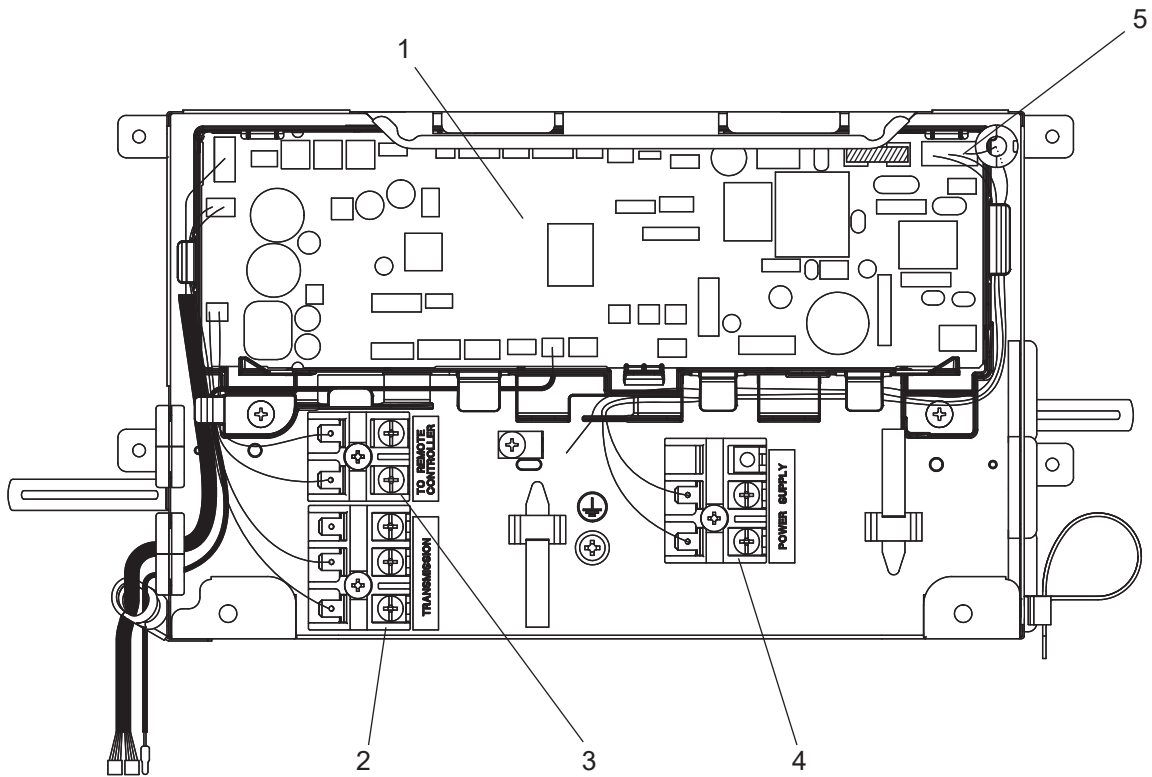


7LE00-P00EC

1. The part quantity below indicates the required number of pieces per unit.
 2. The circled No. indicates that the part is not shown in the figure.

No.	Parts No.	Parts Name	PLP-6EAB	Wiring Diagram Symbol	Remarks
1	T7W E24 003	PANEL ASSY	1		
2	T7W E15 002	VANE & BUSH ASSY	4		
3	T7W E14 638	CORNER PANEL	4		
4	T7W E05 500	L.L FILTER	1		
5	T7W E17 691	INTAKE GRILLE	1		
6	R01 E19 223	STEPPING MOTOR	4	MV	
7	R01 E06 040	GEARS SET	4		

ELECTRICAL PARTS



1. The part quantity below indicates the required number of pieces per unit.
2. The circled No. indicates that the part is not shown in the figure.

No.	Parts No.	Parts Name													Wiring Diagram Symbol	Remarks	
			PLFY-MS15VFM-E.TH	PLFY-MS15VFM-ET.TH	PLFY-MS20VFM-E.TH	PLFY-MS20VFM-ET.TH	PLFY-MS25VFM-E.TH	PLFY-MS25VFM-ET.TH	PLFY-MS32VFM-E.TH	PLFY-MS32VFM-ET.TH	PLFY-MS40VFM-E.TH	PLFY-MS40VFM-ET.TH	PLFY-MS50VFM-E.TH	PLFY-MS50VFM-ET.TH			
1	E27 45U 447	INDOOR CONTROLLER BOARD	1	1	1	1	1	1	1	1	1	1	1	1	1	I.B	
2	E27 154 375	TERMINAL BLOCK	1	1	1	1	1	1	1	1	1	1	1	1	1	TB5	3P(M1, M2, S)
3	E27 156 375	TERMINAL BLOCK	1	1	1	1	1	1	1	1	1	1	1	1	1	TB15	2P(1, 2)
4	E27 C20 375	TERMINAL BLOCK	1	1	1	1	1	1	1	1	1	1	1	1	1	TB2	2P(L, N)
5	E27 648 382	FUSE	1	1	1	1	1	1	1	1	1	1	1	1	1	F1	T6.3AL250V

FUNCTIONAL PARTS
PLFY-MS15VFM-E.TH
PLFY-MS15VFM-ET.TH

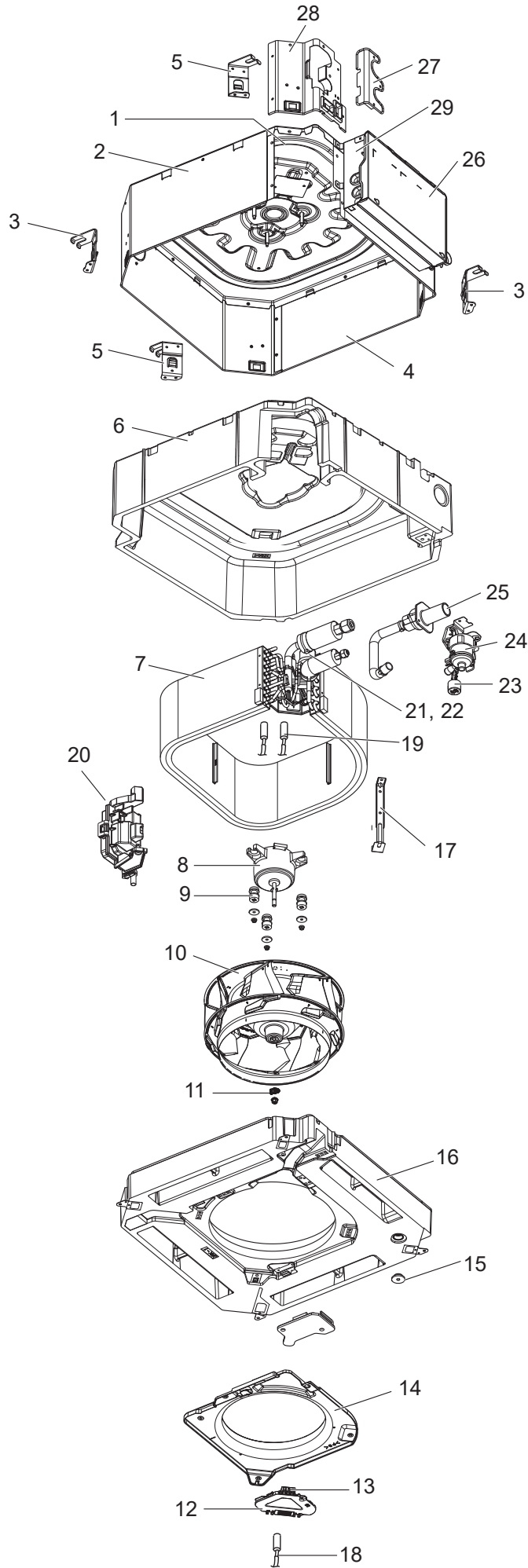
PLFY-MS20VFM-E.TH
PLFY-MS20VFM-ET.TH

PLFY-MS25VFM-E.TH
PLFY-MS25VFM-ET.TH

PLFY-MS32VFM-E.TH
PLFY-MS32VFM-ET.TH

PLFY-MS40VFM-E.TH
PLFY-MS40VFM-ET.TH

PLFY-MS50VFM-E.TH
PLFY-MS50VFM-ET.TH



1. The part quantity below indicates the required number of pieces per unit.
2. The circled No. indicates that the part is not shown in the figure.

No.	Parts No.	Parts Name	PLFY-MS15VFM-E.TH												Wiring Diagram Symbol	Remarks
			PLFY-MS15VFM-E.TH	PLFY-MS15VFM-ET.TH	PLFY-MS20VFM-E.TH	PLFY-MS20VFM-ET.TH	PLFY-MS25VFM-E.TH	PLFY-MS25VFM-ET.TH	PLFY-MS32VFM-E.TH	PLFY-MS32VFM-ET.TH	PLFY-MS40VFM-E.TH	PLFY-MS40VFM-ET.TH	PLFY-MS50VFM-E.TH	PLFY-MS50VFM-ET.TH		
1	E27 C12 290	BASE	1	1	1	1	1	1	1	1	1	1	1			
2	E27 C13 124	DRUM-B	1	1	1	1	1	1	1	1	1	1	1			
3	E27 C12 808	LEG-1	2	2	2	2	2	2	2	2	2	2	2			
4	E27 C12 124	DRUM-A	1	1	1	1	1	1	1	1	1	1	1			
5	E27 C12 809	LEG-2	2	2	2	2	2	2	2	2	2	2	2			
6	E27 K10 092	INNER COVER ASSY	1	1	1	1	1	1	1	1	1	1	1			
7	E27 45U 620	INDOOR HEAT EXCHANGER	1	1	1	1	1	1								
7	E27 48U 620	INDOOR HEAT EXCHANGER							1	1	1	1	1	1		
8	E27 C12 300	INDOOR FAN MOTOR	1	1	1	1	1	1	1	1	1	1	1	1	MF	
9	E27 C12 105	MOTOR MOUNT	3	3	3	3	3	3	3	3	3	3	3	3	3pcs/set	
10	E27 C12 502	TURBO FAN	1	1	1	1	1	1	1	1	1	1	1			
11	E27 K05 097	FAN WASHER & NUT	1	1	1	1	1	1	1	1	1	1	1			
12	E27 C12 091	CONNECTOR COVER	1	1	1	1	1	1	1	1	1	1	1			
13	E27 C12 090	CONNECTOR BOX	1	1	1	1	1	1	1	1	1	1	1			
14	E27 C12 509	BELL MOUTH	1	1	1	1	1	1	1	1	1	1	1			
15	E27 436 524	DRAIN PLUG	1	1	1	1	1	1	1	1	1	1	1			
16	E27 C12 700	DRAIN PAN	1	1	1	1	1	1	1	1	1	1	1			
17	E27 C12 648	COIL SUPPORT	1	1	1	1	1	1	1	1	1	1	1			
18	E27 C12 308	ROOM TEMP. THERMISTOR	1	1	1	1	1	1	1	1	1	1	1	1	TH21	
19	E27 45U 307	PIPE TEMP. THERMISTOR/ LIQ/GAS	1	1	1	1	1	1	1	1	1	1	1	1	TH22 ,TH23	
20	E27 45U 391	R32 SENSOR	1	1	1	1	1	1	1	1	1	1	1		combined type	
21	E27 45U 645	EXPANSION VALVE ASSY	1	1	1	1	1	1	1	1	1	1	1		Includes LEV body, capillary tube	
22	E27 45U 493	LINEAR EXPANSION VALVE COIL	1	1	1	1	1	1	1	1	1	1	1	1	LEV	
23	E27 C12 145	FLOAT SWITCH	1	1	1	1	1	1	1	1	1	1	1	1	FS	
24	E27 81T 355	DRAIN PUMP	1	1	1	1	1	1	1	1	1	1	1	1	DP	
25	E27 C12 702	DRAIN HOSE	1	1	1	1	1	1	1	1	1	1	1			
26	E27 C12 088	CONTROL BOX COVER	1	1	1	1	1	1	1	1	1	1	1			
27	E27 C13 006	COVER (DRUM-U)	1	1	1	1	1	1	1	1	1	1	1			
28	E27 45U 006	COVER (DRUM)	1	1	1	1	1	1	1	1	1	1	1			
29	E27 45U 777	ELECTRICAL CONTROL BOX	1	1	1	1	1	1	1	1	1	1	1			
30	E27 81T 289	BOARD CASE	1	1	1	1	1	1	1	1	1	1	1			
31	E27 M08 097	WASHER	4	4	4	4	4	4	4	4	4	4	4	4	4+4 pcs/set	
32	E27 M09 910	PIPE COVER	1	1	1	1	1	1	1	1	1	1	1			
33	E27 580 704	DRAIN SOCKET	1	1	1	1	1	1	1	1	1	1	1			

CITY MULTI

MITSUBISHI ELECTRIC CORPORATION

HEAD OFFICE: TOKYO BUILDING, 2-7-3, MARUNOUCHI, CHIYODA-KU TOKYO 100-8310, JAPAN
