

PARTS CATALOG

Series PLFY Ceiling Cassettes

R32
Indoor unit
[Model names]

PLFY-MS20VEM-E
 PLFY-MS20VEM-ET
 PLFY-MS25VEM-E
 PLFY-MS25VEM-ET
 PLFY-MS32VEM-E
 PLFY-MS32VEM-ET
 PLFY-MS40VEM-E
 PLFY-MS40VEM-ET
 PLFY-MS50VEM-E
 PLFY-MS50VEM-ET
 PLFY-MS63VEM-E
 PLFY-MS63VEM-ET
 PLFY-MS80VEM-E
 PLFY-MS80VEM-ET
 PLFY-MS100VEM-E
 PLFY-MS100VEM-ET
 PLFY-MS125VEM-E
 PLFY-MS125VEM-ET

[Service Ref.]

PLFY-MS20VEM-E.UK
 PLFY-MS20VEM-ET.UK
 PLFY-MS25VEM-E.UK
 PLFY-MS25VEM-ET.UK
 PLFY-MS32VEM-E.UK
 PLFY-MS32VEM-ET.UK
 PLFY-MS40VEM-E.UK
 PLFY-MS40VEM-ET.UK
 PLFY-MS50VEM-E.UK
 PLFY-MS50VEM-ET.UK
 PLFY-MS63VEM-E.UK
 PLFY-MS63VEM-ET.UK
 PLFY-MS80VEM-E.UK
 PLFY-MS80VEM-ET.UK
 PLFY-MS100VEM-E.UK
 PLFY-MS100VEM-ET.UK
 PLFY-MS125VEM-E.UK
 PLFY-MS125VEM-ET.UK

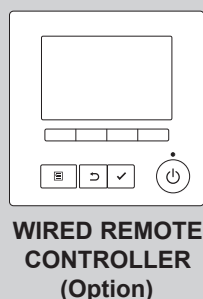
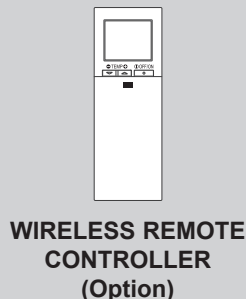
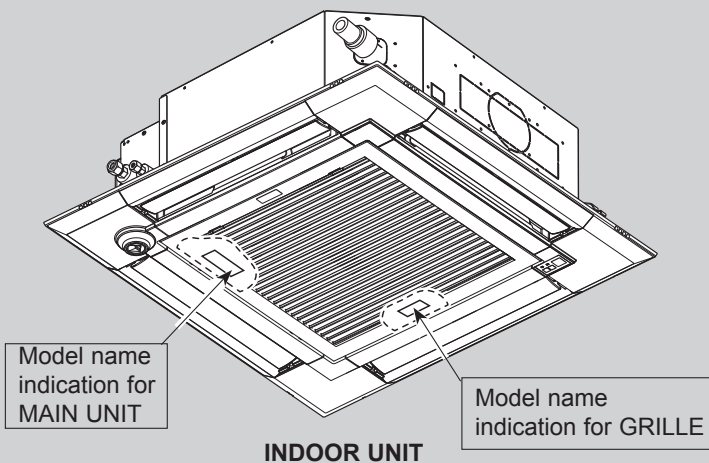
Revision:

- 1. SERVICE PARTS LIST has been revised in REVISED EDITION-A.

OCH826 is void.

Grille model
[Model names]

PLP-6EA
 PLP-6EAE
 PLP-6EAL
 PLP-6EALM2
 PLP-6EALME2



CONTENTS

1. SERVICE PARTS LIST 2
2. OPTIONAL PARTS LIST 10

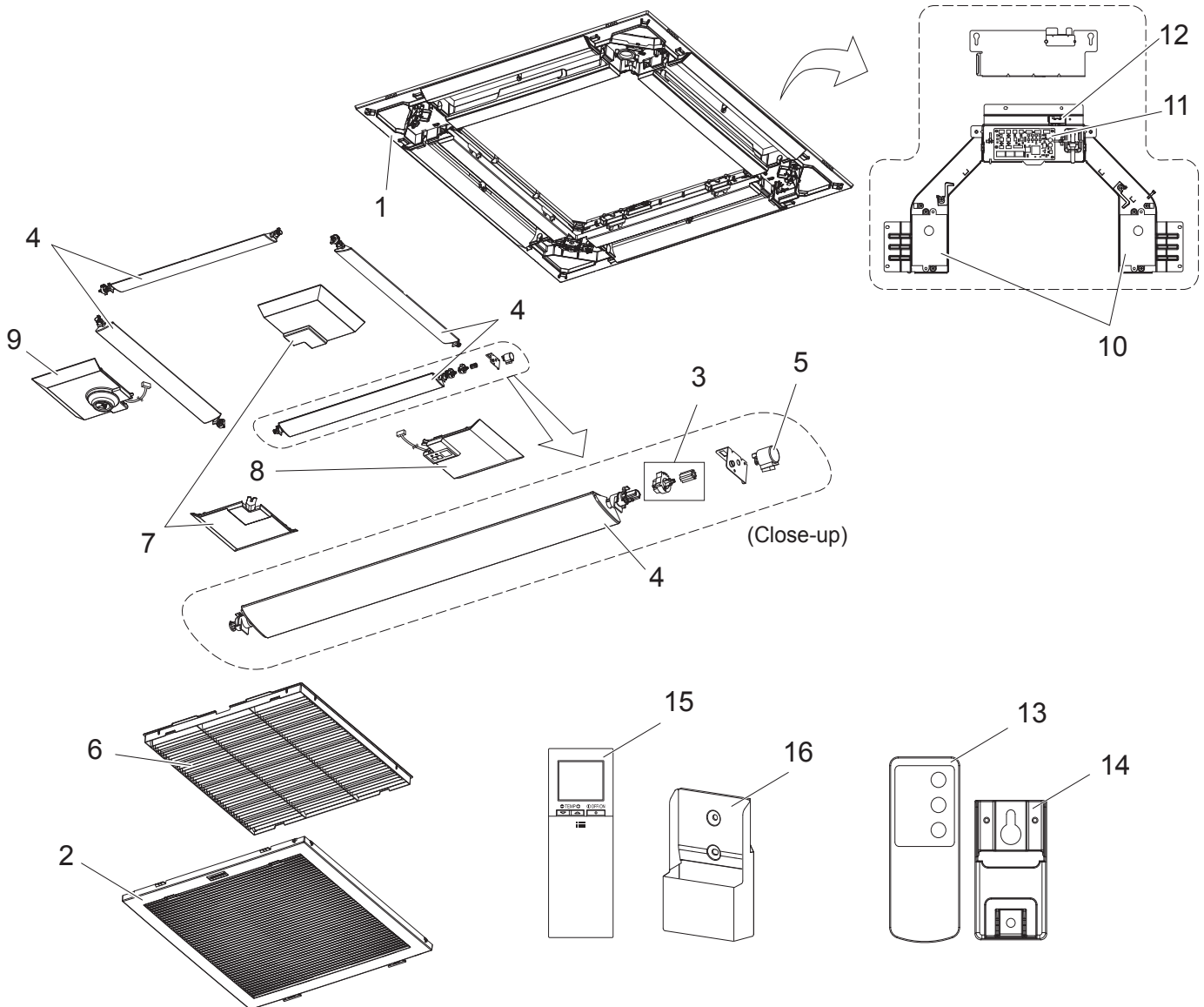
SERVICE MANUAL (OCH826)

CITY MULTI

GRILLE PARTS

[Service Ref.]

- PLP-6EAR1 (Standard)
 PLP-6EALR1 (Standard with signal receiver)
 PLP-6EAER1 (Standard with i-see Sensor)
 PLP-6EALER1 (Standard with signal receiver and i-see Sensor)
 PLP-6EAJ (Elevation)
 PLP-6EAJE (Elevation with i-see Sensor)
 PLP-6EALM2 (Standard with signal receiver and wireless remote controller)
 PLP-6EALME2 (Standard with signal receiver, i-see Sensor, and wireless remote controller)



1. The part quantity below indicates the required number of pieces per unit.
2. The circled No. indicates that the part is not shown in the figure.

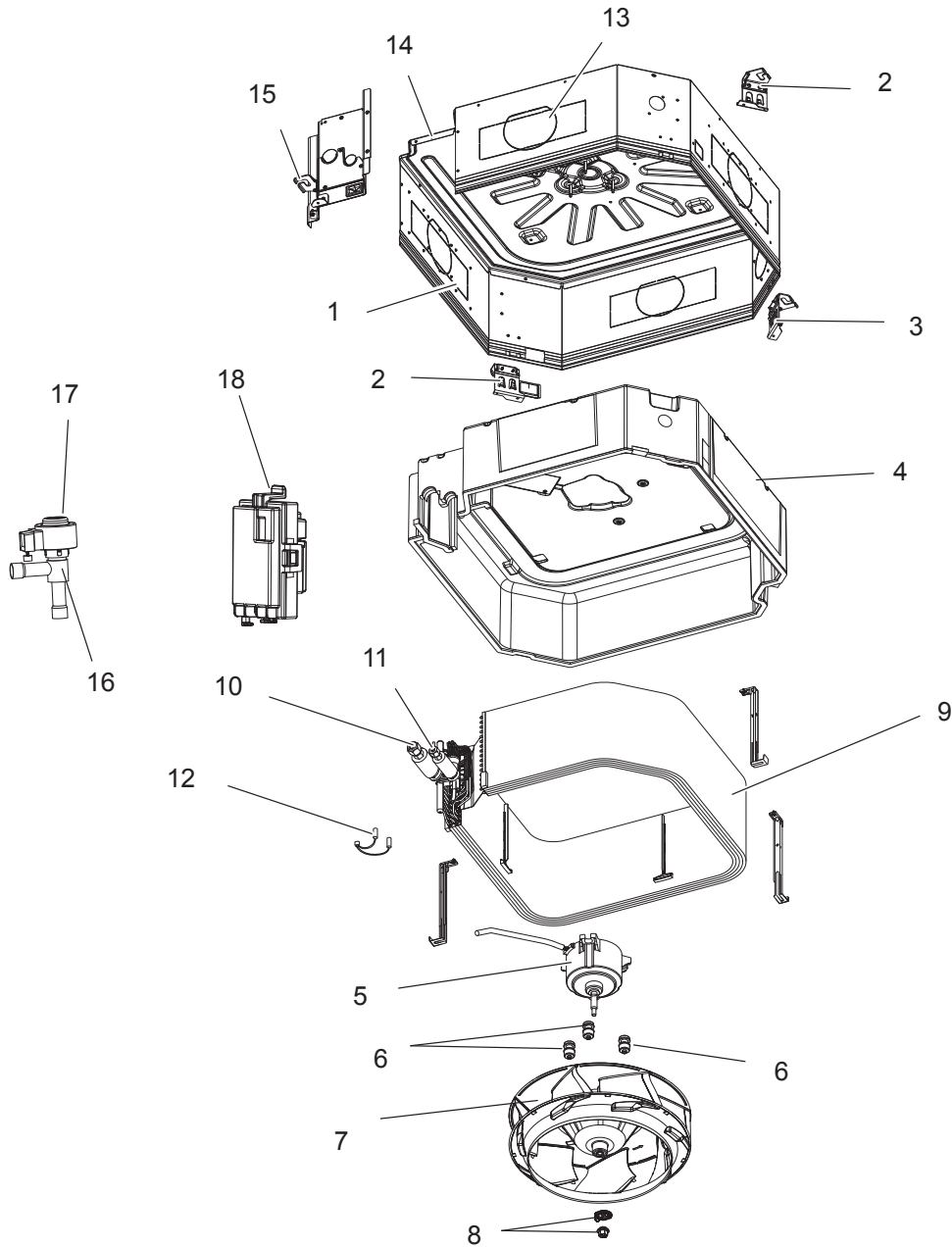
No.	Parts No.	Parts Name	PLP-6EAR1	PLP-6EALR1	PLP-6EAER1	PLP-6EALER1	PLP-6EAJ	PLP-6EAJE	PLP-6EALM2	PLP-6EALME2	Wiring Diagram Symbol	Remarks
1	E27 F85 003	AIR OUTLET GRILLE	1	1	1	1	1	1	1	1		
2	E27 F85 010	INTAKE GRILLE	1	1	1	1			1	1		
2	E27 F91 010	INTAKE GRILLE					1	1				
3	E27 F85 031	GEAR (VANE & S/M)	4	4	4	4	4	4	4	4		
4	E27 F85 037	AUTO VANE & VANE BUSH	4	4	4	4	4	4	4	4		1PC/SET
5	E27 103 303	VANE MOTOR	4	4	4	4	4	4	4	4	MV	1PC/SET
6	E27 F85 100	AIR FILTER	1	1	1	1	1	1	1	1		
7	E27 F85 975	CORNER PANEL	4	3	3	2	3	2	3	2		1PC/SET
8	E27 F88 975	CORNER PANEL (Signal receiver)		1		1	1	1	1	1		
9	E27 F86 975	CORNER PANEL (i-see Sensor)			1	1		1		1		
10	E27 F91 471	MOTOR BOX					2	2				2PCS/SET
11	E27 F91 447	INDOOR CONTROLLER BOARD					1	1				
12	E27 F91 316	LIMIT SWITCH					1	1				
13	E27 F91 426	REMOTE CONTROLLER INFRARED					1	1				for Elevation panel
14	E27 F91 083	REMOTE CONTROLLER HOLDER					1	1				for Elevation panel
15	E27 58G 426	REMOTE CONTROLLER INFRARED							1	1		PAR-SL101A-E
16	E27 D44 083	REMOTE CONTROLLER HOLDER							1	1		for PAR-SL101A-E

STRUCTURAL AND FUNCTIONAL PARTS

PLFY-MS20VEM-E.UK
PLFY-MS40VEM-E.UK
PLFY-MS80VEM-E.UK

PLFY-MS25VEM-E.UK
PLFY-MS50VEM-E.UK
PLFY-MS100VEM-E.UK

PLFY-MS32VEM-E.UK
PLFY-MS63VEM-E.UK
PLFY-MS125VEM-E.UK



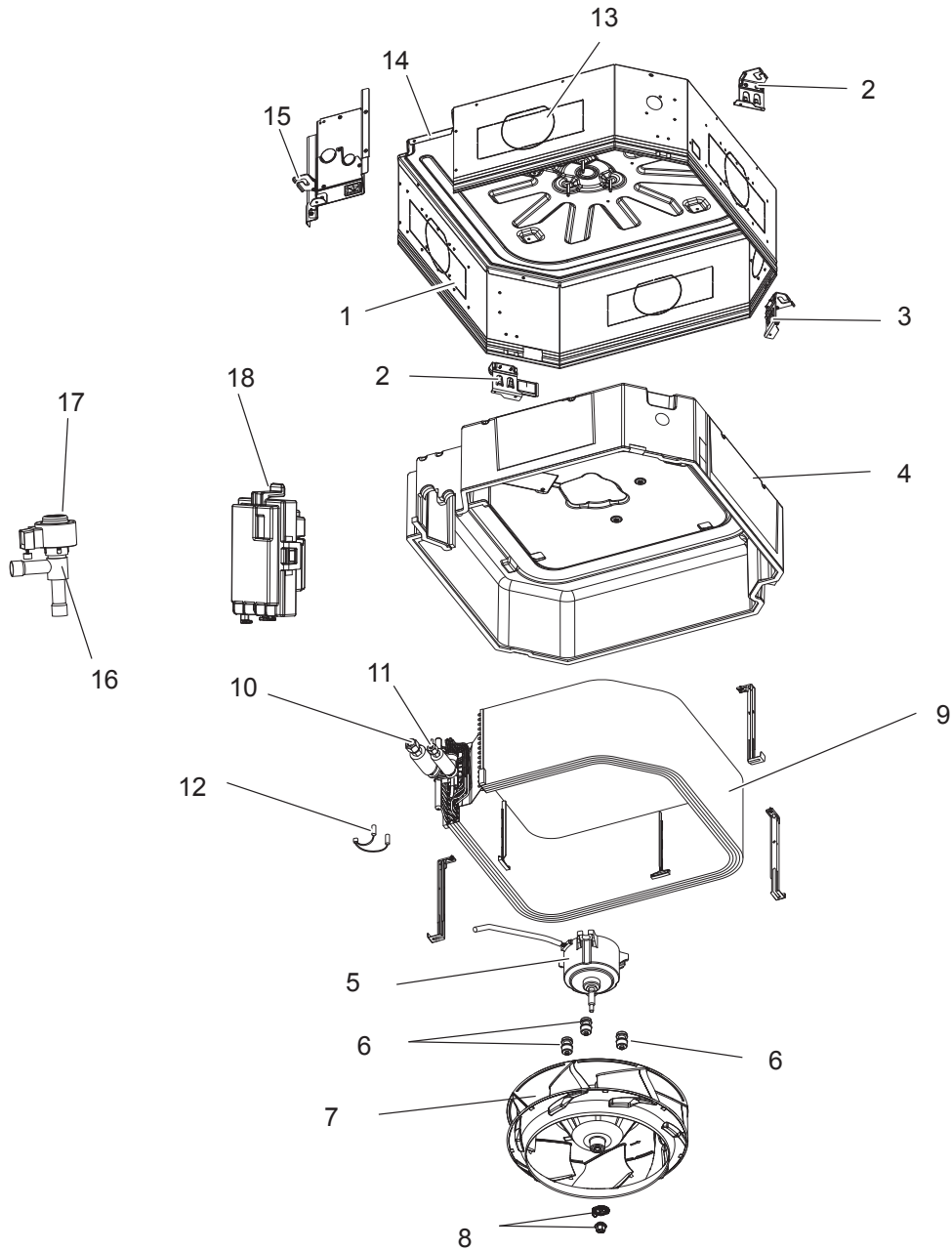
1. The part quantity below indicates the required number of pieces per unit.
2. The circled No. indicates that the part is not shown in the figure.

No.	Parts No.	Parts Name											Wiring Diagram Symbol	Remarks	
			PLFY-MS20VEM-E.UK	PLFY-MS25VEM-E.UK	PLFY-MS32VEM-E.UK	PLFY-MS40VEM-E.UK	PLFY-MS50VEM-E.UK	PLFY-MS63VEM-E.UK	PLFY-MS80VEM-E.UK	PLFY-MS100VEM-E.UK	PLFY-MS125VEM-E.UK				
1	S70 0B7 688	DRUM 2 ASSY	1	1	1	1	1	1	1						
1	S70 0B8 688	DRUM 2 ASSY										1	1		
2	S70 EA2 130	LEG PUMP	2	2	2	2	2	2	2	2	2				
3	S70 EA1 130	LEG FA	1	1	1	1	1	1	1	1	1	1	1		
4	S70 0B4 659	INNER COVER ASSY-S	1	1	1	1	1	1	1						
4	S70 0B5 659	INNER COVER ASSY-L										1	1		
5	S70 0B4 762	FAN MOTOR	1	1	1	1	1	1	1					MF	(DC)-S
5	S70 0B5 762	FAN MOTOR										1	1	MF	(DC)-M
6	S70 0B1 105H	MOTOR MOUNT	3	3	3	3	3	3	3	3	3				
7	S70 0B4 114	TURBO FAN	1	1	1	1	1	1	1	1	1	1	1		
8	S70 11B 097	SPL WASHER / NUT	1	1	1	1	1	1	1	1	1	1	1		M8
9	S70 B50 480	HEAT EXCHANGER	1	1	1										
9	S70 B51 480	HEAT EXCHANGER				1	1								
9	S70 B52 480	HEAT EXCHANGER						1							
9	S70 B53 480	HEAT EXCHANGER							1						
9	S70 B54 480	HEAT EXCHANGER									1				
9	S70 B55 480	HEAT EXCHANGER										1			
10	S70 0B2 097	FLARE NUT	1	1	1	1	1								1/2"
10	S70 0B5 097	FLARE NUT						1	1	1	1				5/8"
11	S70 0B3 097	FLARE NUT	1	1	1	1	1								1/4"
11	S70 0B4 097	FLARE NUT						1	1	1	1				3/8"
12	S70 0B4 202	THERMISTOR	1	1	1	1	1	1	1	1	1	1	1	TH22/TH23	
13	S70 0B5 688	DRUM 1 ASSY	1	1	1	1	1	1	1						
13	S70 0B6 688	DRUM 1 ASSY										1	1		
14	S70 0B2 687	BASE	1	1	1	1	1	1	1	1	1	1	1		
15	S70 EA3 130	LEG PIPE	1	1	1	1	1	1	1	1	1	1	1		
16	S70 0B5 401	LEV-4	1	1	1	1	1	1						LEV	
16	S70 0B6 401	LEV-8							1	1	1	1	1	LEV	
17	S70 E20 402	LEV-COIL	1	1	1	1	1	1	1	1	1	1	1		
18	S70 E01 266	R32 SENSOR ASSY	1	1	1	1	1	1	1	1	1	1	1	Refrigerant sensor	

PLFY-MS20VEM-ET.UK
PLFY-MS40VEM-ET.UK
PLFY-MS80VEM-ET.UK

PLFY-MS25VEM-ET.UK
PLFY-MS50VEM-ET.UK
PLFY-MS100VEM-ET.UK

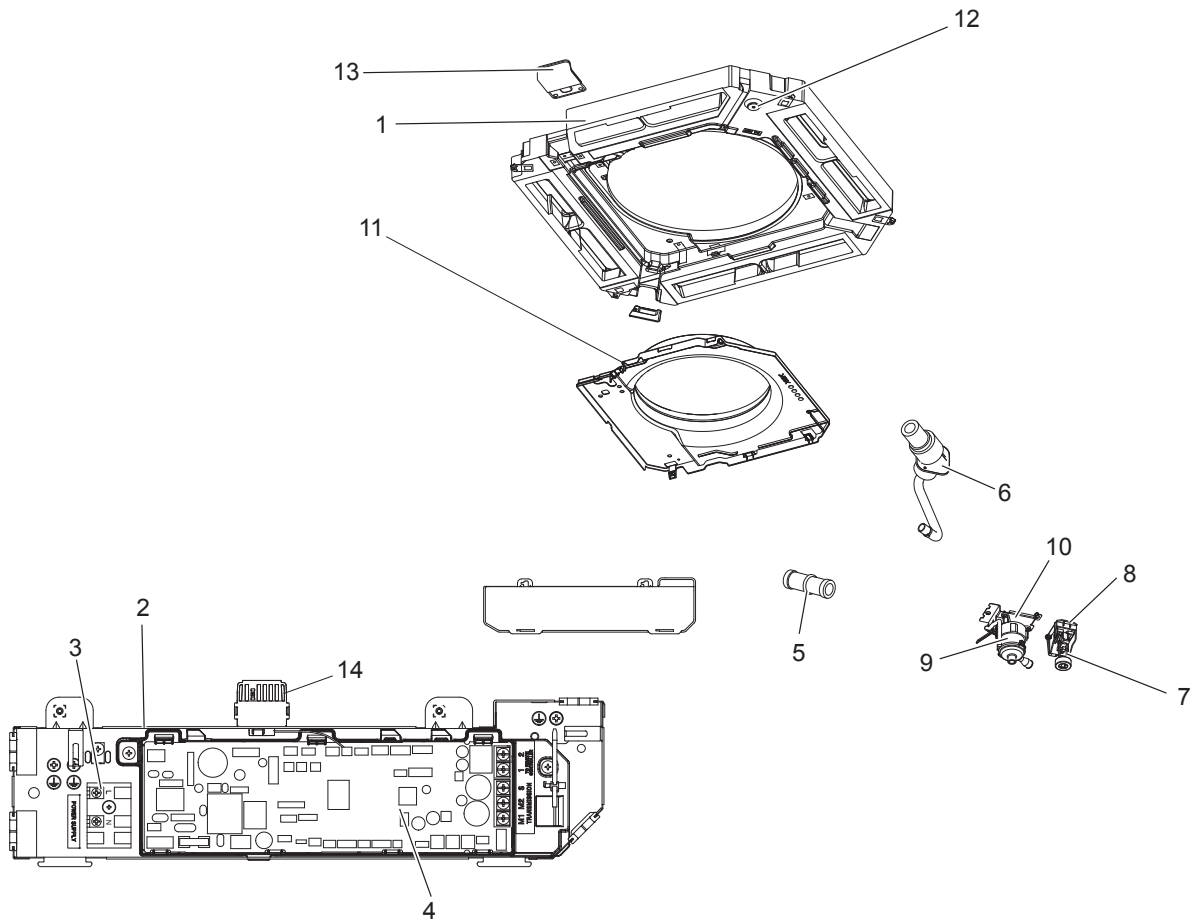
PLFY-MS32VEM-ET.UK
PLFY-MS63VEM-ET.UK
PLFY-MS125VEM-ET.UK



1. The part quantity below indicates the required number of pieces per unit.
2. The circled No. indicates that the part is not shown in the figure.

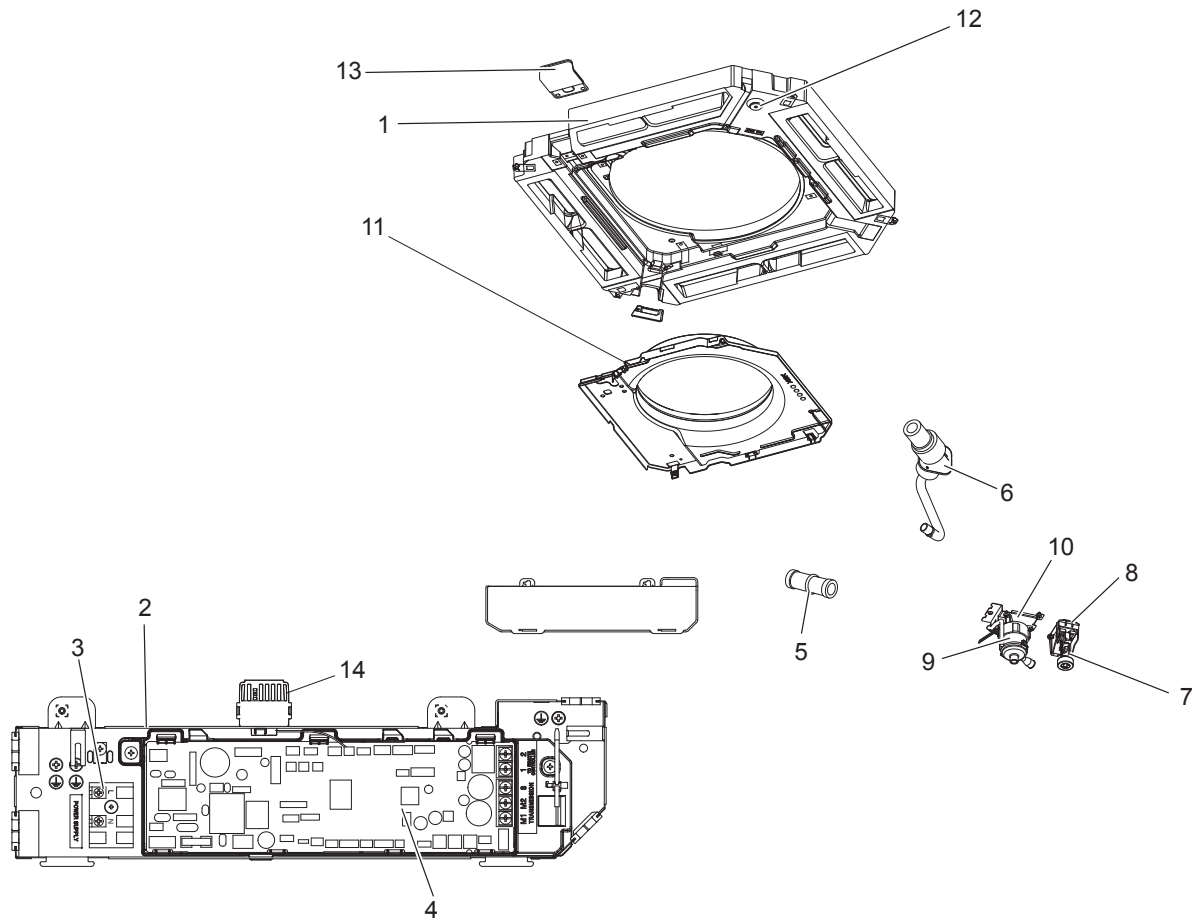
No.	Parts No.	Parts Name	PLFY-MS20VEM-ET.UK	PLFY-MS25VEM-ET.UK	PLFY-MS32VEM-ET.UK	PLFY-MS40VEM-ET.UK	PLFY-MS50VEM-ET.UK	PLFY-MS63VEM-ET.UK	PLFY-MS80VEM-ET.UK	PLFY-MS100VEM-ET.UK	PLFY-MS125VEM-ET.UK	Wiring Diagram Symbol	Remarks
1	S70 0B7 688	DRUM 2 ASSY	1	1	1	1	1	1	1				
1	S70 0B8 688	DRUM 2 ASSY								1	1		
2	S70 EA2 130	LEG PUMP	2	2	2	2	2	2	2	2	2		
3	S70 EA1 130	LEG FA	1	1	1	1	1	1	1	1	1		
4	S70 0B4 659	INNER COVER ASSY-S	1	1	1	1	1	1	1				
4	S70 0B5 659	INNER COVER ASSY-L								1	1		
5	S70 0B4 762	FAN MOTOR	1	1	1	1	1	1	1			MF	(DC)-S
5	S70 0B5 762	FAN MOTOR								1	1	MF	(DC)-M
6	S70 0B1 105H	MOTOR MOUNT	3	3	3	3	3	3	3	3	3		
7	S70 0B4 114	TURBO FAN	1	1	1	1	1	1	1	1	1		
8	S70 11B 097	SPL WASHER / NUT	1	1	1	1	1	1	1	1	1		M8
9	S70 B50 480	HEAT EXCHANGER	1	1	1								
9	S70 B51 480	HEAT EXCHANGER				1	1						
9	S70 B52 480	HEAT EXCHANGER						1					
9	S70 B53 480	HEAT EXCHANGER							1				
9	S70 B54 480	HEAT EXCHANGER								1			
9	S70 B55 480	HEAT EXCHANGER									1		
10	S70 0B2 097	FLARE NUT	1	1	1	1	1						1/2"
10	S70 0B5 097	FLARE NUT						1	1	1	1		5/8"
11	S70 0B3 097	FLARE NUT	1	1	1	1	1						1/4"
11	S70 0B4 097	FLARE NUT						1	1	1	1		3/8"
12	S70 0B4 202	THERMISTOR	1	1	1	1	1	1	1	1	1	TH22/TH23	
13	S70 0B5 688	DRUM 1 ASSY	1	1	1	1	1	1	1				
13	S70 0B6 688	DRUM 1 ASSY								1	1		
14	S70 0B2 687	BASE	1	1	1	1	1	1	1	1	1		
15	S70 EA3 130	LEG PIPE	1	1	1	1	1	1	1	1	1		
16	S70 0B5 401	LEV-4	1	1	1	1	1	1				LEV	
16	S70 0B6 401	LEV-8							1	1	1	LEV	
17	S70 E20 402	LEV-COIL	1	1	1	1	1	1	1	1	1		
18	S70 E01 266	R32 SENSOR ASSY	1	1	1	1	1	1	1	1	1	Refrigerant sensor	

FUNCTIONAL AND ELECTRICAL PARTS



1. The part quantity below indicates the required number of pieces per unit.
 2. The circled No. indicates that the part is not shown in the figure.

No.	Parts No.	Parts Name	PLFY-MS20VEM-E.UK	PLFY-MS25VEM-E.UK	PLFY-MS32VEM-E.UK	PLFY-MS40VEM-E.UK	PLFY-MS50VEM-E.UK	PLFY-MS63VEM-E.UK	PLFY-MS80VEM-E.UK	PLFY-MS100VEM-E.UK	PLFY-MS125VEM-E.UK	Wiring Diagram Symbol	Remarks
			1	1	1	1	1	1	1	1	1		
1	S70 0B5 529H	DRAIN PAN	1	1	1	1	1	1	1	1	1		
2	S70 0B7 501	ELECTRICAL CONTROL BOX	1	1	1	1	1	1	1	1	1		
3	S70 B03 716	TERMINAL BLOCK	1	1	1	1	1	1	1	1	1	TB2	2P (L,N)
4	S70 B50 310	INDOOR CONTROLLER BOARD	1	1	1	1	1	1	1	1	1	I.B	
5	S70 29H 523	DRAIN SOCKET	1	1	1	1	1	1	1	1	1		
6	S70 0B2 527H	DRAIN HOSE ASSY	1	1	1	1	1	1	1	1	1		
7	S70 0B2 266	FLOAT SWITCH	1	1	1	1	1	1	1	1	1	FS	
8	S70 0B2 533	FLOAT SWITCH BASE	1	1	1	1	1	1	1	1	1		
9	S70 0B3 355	DRAIN PUMP	1	1	1	1	1	1	1	1	1	DP	220-240 V
10	S70 0B3 533	DRAIN PUMP BASE	1	1	1	1	1	1	1	1	1		
11	S70 0B3 502	BELLMOUTH-S	1	1	1	1	1	1	1				
11	S70 0B4 502	BELLMOUTH-L								1	1		
12	S70 A41 524H	DRAIN PLUG	1	1	1	1	1	1	1	1	1		
13	S70 EA1 663	WIRE COVER-HI ASSY	1	1	1	1	1	1	1	1	1		
14	S70 0B3 202	ROOM TEMP. THERMISTOR	1	1	1	1	1	1	1	1	1	TH21	220XAP



1. The part quantity below indicates the required number of pieces per unit.
 2. The circled No. indicates that the part is not shown in the figure.

No.	Parts No.	Parts Name	PLFY-MS20VEM-ET.UK	PLFY-MS25VEM-ET.UK	PLFY-MS32VEM-ET.UK	PLFY-MS40VEM-ET.UK	PLFY-MS50VEM-ET.UK	PLFY-MS63VEM-ET.UK	PLFY-MS80VEM-ET.UK	PLFY-MS100VEM-ET.UK	PLFY-MS125VEM-ET.UK	Wiring Diagram Symbol	Remarks
			1	1	1	1	1	1	1	1	1		
1	S70 0B5 529H	DRAIN PAN	1	1	1	1	1	1	1	1	1		
2	S70 0B7 501	ELECTRICAL CONTROL BOX	1	1	1	1	1	1	1	1	1		
3	S70 B03 716	TERMINAL BLOCK	1	1	1	1	1	1	1	1	1	TB2	2P (L,N)
4	S70 B50 310	INDOOR CONTROLLER BOARD	1	1	1	1	1	1	1	1	1	I.B	
5	S70 29H 523	DRAIN SOCKET	1	1	1	1	1	1	1	1	1		
6	S70 0B2 527H	DRAIN HOSE ASSY	1	1	1	1	1	1	1	1	1		
7	S70 0B2 266	FLOAT SWITCH	1	1	1	1	1	1	1	1	1	FS	
8	S70 0B2 533	FLOAT SWITCH BASE	1	1	1	1	1	1	1	1	1		
9	S70 0B3 355	DRAIN PUMP	1	1	1	1	1	1	1	1	1	DP	220-240 V
10	S70 0B3 533	DRAIN PUMP BASE	1	1	1	1	1	1	1	1	1		
11	S70 0B3 502	BELLMOUTH-S	1	1	1	1	1	1	1				
11	S70 0B4 502	BELLMOUTH-L								1	1		
12	S70 A41 524H	DRAIN PLUG	1	1	1	1	1	1	1	1	1		
13	S70 EA1 663	WIRE COVER-HI ASSY	1	1	1	1	1	1	1	1	1		
14	S70 0B3 202	ROOM TEMP. THERMISTOR	1	1	1	1	1	1	1	1	1	TH21	220XAP

2

OPTIONAL PARTS

Parts name	Parts No.
SPACE PANEL	PAC-SJ65AS-E
AIR OUTLET SHUTTER PLATE	PAC-SJ37SP-E
WIRED REMOTE CONTROLLER (MA REMOTE CONTROLLER)	PAR-41MAAB
WIRED REMOTE CONTROLLER (MA REMOTE CONTROLLER)	PAR-U02MEDA
WIRED REMOTE CONTROLLER (SIMPLE MA REMOTE CONTROLLER)	PAC-YT52CRA
WIRELESS REMOTE CONTROLLER	PAR-SL101A-E
WIRELESS REMOTE CONTROLLER	PAR-FL32MA
HIGH EFFICIENCY FILTER ELEMENT	PAC-SH59KF-E
MULTI-FUNCTIONAL CASEMENT	PAC-SH53TM-E
FLANGE FOR FRESH AIR INTAKE	PAC-SH65OF-E
MA & CONTACT TERMINAL INTERFACE	MAC-397IF-E
REMOTE SENSOR	PAC-SE41TS-E
Wi-Fi INTERFACE	MAC-587IF-E
REMOTE ON/OFF ADAPTER	PAC-SE55RA-E
REMOTE DISPLAY ADAPTER	PAC-SA88HA-E
GRILLE (i-see Sensor)	PLP-6EAE,
GRILLE (i-see Sensor with signal receiver)	PLP-6EALE,
GRILLE (i-see Sensor with receiver and wireless remote controller)	PLP-6EALME2
GRILLE (Standard)	PLP-6EA
GRILLE (Standard with signal receiver)	PLP-6EAL
GRILLE (Standard with receiver and wireless remote controller)	PLP-6EALM2
GRILLE (Automatic filter elevation without i-see Sensor)	PLP-6EAJ
GRILLE (Automatic filter elevation with i-see Sensor)	PLP-6EAJE
i-see Sensor CORNER PANEL	PAC-SE1ME-E
SIGNAL RECEIVER CORNER PANEL	PAR-SE9FA-E
LOUVER UNIT	PLP-U160ELR-E
V BLOCKING FILTER	PAC-SK53KF-E
PLASMA QUAD CONNECT	PAC-SK51FT-E

MITSUBISHI ELECTRIC CORPORATION

HEAD OFFICE : TOKYO BUILDING, 2-7-3, MARUNOUCHI, CHIYODA-KU, TOKYO 100-8310, JAPAN