

PARTS CATALOG

Series PKFY Wall Mounted

Indoor unit
[Model Name]

PKFY-WL10VLM-E
PKFY-WL15VLM-E
PKFY-WL20VLM-E
PKFY-WL25VLM-E
PKFY-WL32VLM-E
PKFY-WL40VLM-E

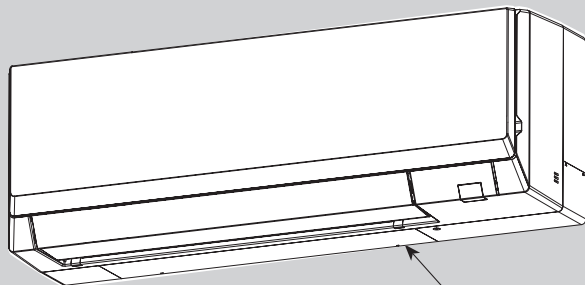
[Service Ref.]

PKFY-WL10VLM-ER1.TH
PKFY-WL15VLM-ER1.TH
PKFY-WL20VLM-ER1.TH
PKFY-WL25VLM-ER1.TH
PKFY-WL32VLM-ER1.TH
PKFY-WL40VLM-ER1.TH

Revision:

- Some descriptions have been modified.

TCB072 is void.



INDOOR UNIT

Model name
indication

CONTENTS

1. SERVICE PARTS LIST 2
2. OPTIONAL PARTS 6

SERVICE MANUAL (TCH072)

CITY MULTI

1

SERVICE PARTS LIST

1-1. PANEL AND HEAT EXCHANGER PARTS

PKFY-WL10VLM-ER1.TH

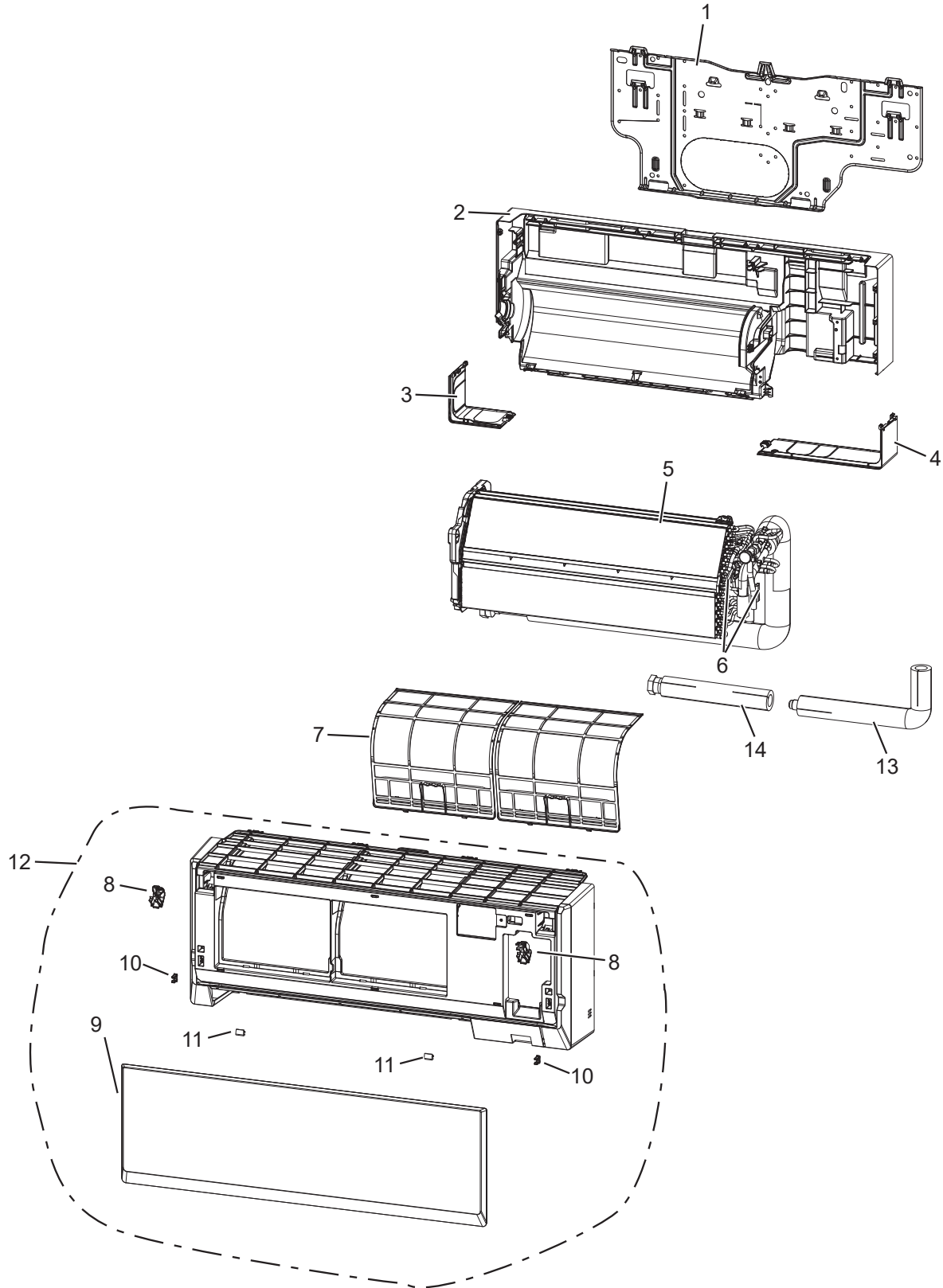
PKFY-WL15VLM-ER1.TH

PKFY-WL20VLM-ER1.TH

PKFY-WL25VLM-ER1.TH

PKFY-WL32VLM-ER1.TH

PKFY-WL40VLM-ER1.TH



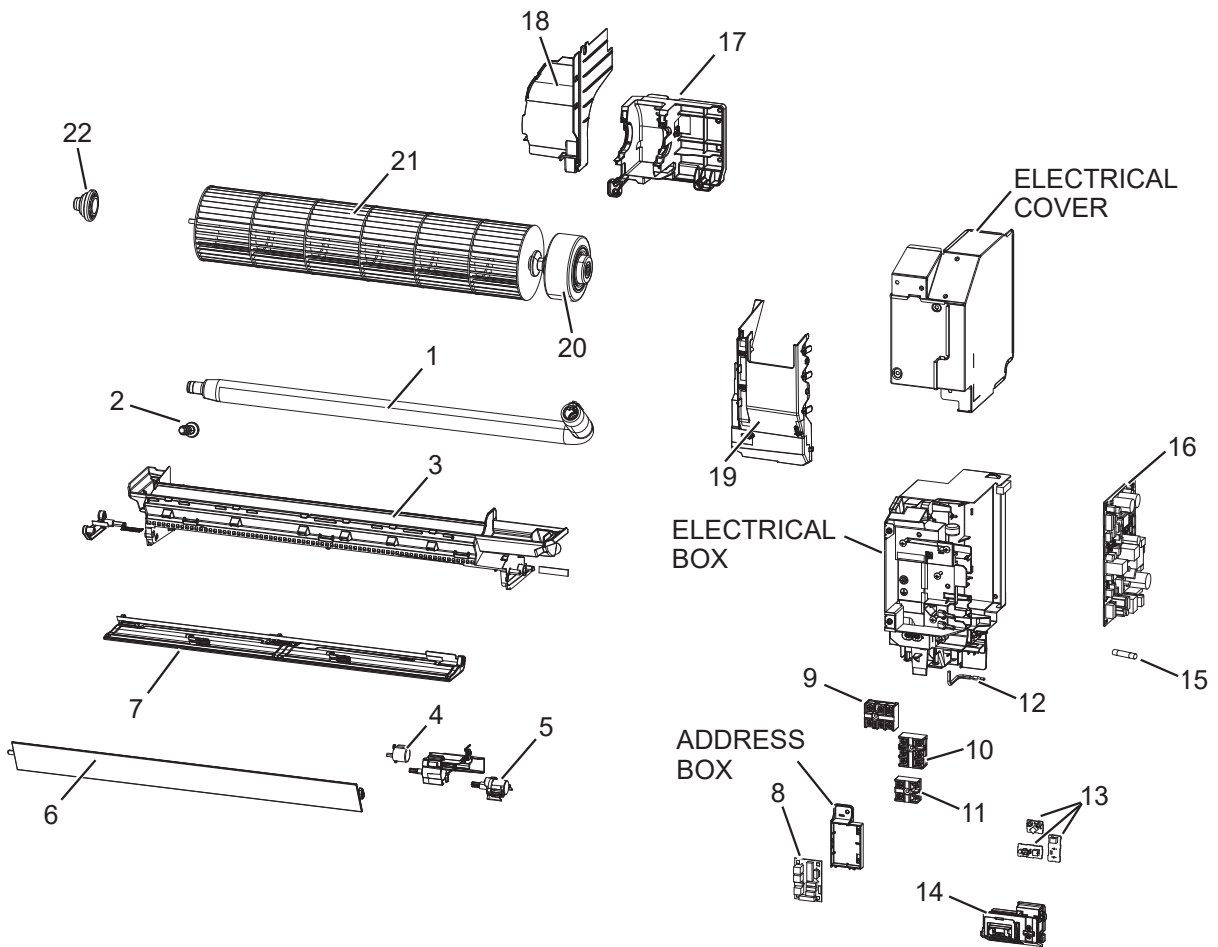
PANEL AND HEAT EXCHANGER PARTS

No.	Part No.	Part Name							Remarks (Drawing No.)	Wiring Diagram Symbol
			PKFY-WL10VLM-ER1.TH	PKFY-WL15VLM-ER1.TH	PKFY-WL20VLM-ER1.TH	PKFY-WL25VLM-ER1.TH	PKFY-WL32VLM-ER1.TH	PKFY-WL40VLM-ER1.TH		
1	E27 P63 970	INSTALLATION PLATE	1	1	1	1				
	E27 P68 970	INSTALLATION PLATE					1	1		
2	E27 P70 234	BOX ASSEMBLY	1	1	1	1				
	E27 P94 234	BOX ASSEMBLY					1	1		
3	E27 P63 976	CORNER BOX L	1	1	1	1	1	1		
4	E27 P63 975	CORNER BOX R	1	1	1	1	1	1		
5	E27 P89 620	INDOOR HEAT EXCHANGER	1	1					Except L-SHAPED CONNECTION PIPE and STRAIGHT CONNCTION PIPE	
	E27 P91 620	INDOOR HEAT EXCHANGER			1	1				
	E27 P93 620	INDOOR HEAT EXCHANGER					1			
	E27 P94 620	INDOOR HEAT EXCHANGER						1		
6	E27 P89 307	INDOOR COIL THERMISTOR	1	1			1	1	TH22, TH23	
	E27 P92 307	INDOOR COIL THERMISTOR			1	1				
7	E27 65K 100	AIR FILTER	2	2	2	2			VK25A182G01	
	E27 58G 100	AIR FILTER					2	2	VK25A181G01	
8	E27 P63 021	ARM HOLDER SET	1	1	1	1	1	1	Set (left, right)	
9	E27 P63 010	FRONT PANEL	1	1	1	1				
	E27 P68 010	FRONT PANEL					1	1		
10	E22 F95 142	CATCH	2	2	2	2	2	2	2 pcs/set	
11	E22 98B 067	SCREW CAP	2	2	2	2	2	2	2 pcs/set	
12	E27 P89 000	PANEL ASSEMBLY	1	1	1	1			Includes 8, 9, 10, 11	
	E27 P93 000	PANEL ASSEMBLY					1	1		
13	E27 P93 668	L-SHAPED CONNECTION PIPE					2	2		
14	E27 P94 668	STRAIGHT CONNECTION PIPE					2	2		
15	E27 895 642	AIR PURGE VALVE	1	1	1	1	1	1		
16	E27 P89 666	UNION	2	2	2	2				
17	E27 P93 666	UNION					2	2		

Parts number that is circled is not shown in the figure.

1-2. ELECTRICAL PARTS
PKFY-WL10VLM-ER1.TH
PKFY-WL20VLM-ER1.TH
PKFY-WL32VLM-ER1.TH

PKFY-WL15VLM-ER1.TH
PKFY-WL25VLM-ER1.TH
PKFY-WL40VLM-ER1.TH



ELECTRICAL PARTS

No.	Part No.	Part Name	PKFY-WL10VLM-ER1.TH	PKFY-WL15VLM-ER1.TH	PKFY-WL20VLM-ER1.TH	PKFY-WL25VLM-ER1.TH	PKFY-WL32VLM-ER1.TH	PKFY-WL40VLM-ER1.TH	Remarks (Drawing No.)	Wiring Diagram Symbol
1	E22 T20 702	DRAIN HOSE	1	1	1	1	1	1		
2	E27 42R 705	DRAIN CAP	1	1	1	1	1	1		
3	E27 76G 235	NOZZLE ASSEMBLY	1	1	1	1			Full assembly except drain hose	
	E27 77G 235	NOZZLE ASSEMBLY					1	1		
4	E27 103 303	VANE MOTOR (UPPER)	1	1	1	1	1	1		MV1
5	E22 Y54 303	VANE MOTOR (LOWER)	1	1	1	1	1	1		MV2
6	E27 76G 040	VANE UPPER	1	1	1	1				
	E27 77G 040	VANE UPPER					1	1		
7	E27 76G 041	VANE LOWER	1	1	1	1				
	E27 77G 041	VANE LOWER					1	1		
8	E27 696 456	ADDRESS BOARD	1	1	1	1	1	1		A.B.
9	E27 518 375	TERMINAL BLOCK	1	1	1	1	1	1	Power supply	TB2
10	E27 519 375	TERMINAL BLOCK	1	1	1	1	1	1	Transmission	TB5
11	E27 249 375	TERMINAL BLOCK	1	1	1	1	1	1	MA-Remote controller	TB15
12	E27 P63 308	ROOM TEMP. THERMISTOR	1	1	1	1	1	1		TH21
13	E27 P63 468	PCB FOR WIRELESS REMOTE CONTROLLER (W.B),SWITCH BOARD (S.B) and LED BOARD (L.B)	1	1	1	1	1	1	Combined PCB	L.B., W.B., S.B.
14	E27 P63 095	DISPLAY RECEIVER HOLDER	1	1	1	1	1	1		
15	E22 A49 382	FUSE	1	1	1	1	1	1	T3.15AL 250V	F1
16	E27 1A6 447	INDOOR CONTROLLER BOARD	1	1	1	1	1	1		I.B.
17	E27 P64 333	MOTOR BED	1	1	1	1				
	E27 P94 333	MOTOR BED					1	1		
18	E27 P89 333	MOTOR BAND	1	1	1	1	1	1		
19	E27 P89 541	WATER COVER	1	1	1	1	1	1		
20	E27 P63 300	INDOOR FAN MOTOR	1	1	1	1	1	1	Includes rubber mounts	MF
21	E27 P63 302	LINE FLOW FAN	1	1	1	1				
	E27 P68 302	LINE FLOW FAN					1	1		
22	E22 A89 509	BEARING MOUNT ASSEMBLY	1	1	1	1	1	1		

2**OPTIONAL PARTS****2-1. WIRELESS REMOTE CONTROLLER**

Part No.	PAR-SL101A-E
----------	--------------

2-2. WIRED REMOTE CONTROLLER (MA REMOTE CONTROLLER)

Part No.	PAR-21MAA PAR-41MAA
----------	------------------------

2-3. WIRED REMOTE CONTROLLER (SIMPLE MA REMOTE CONTROLLER)

Part No.	PAC-YT52CRA
----------	-------------

2-4. WIRED REMOTE CONTROLLER (SMART ME CONTROLLER)

Part No.	PAR-U02MEDA
----------	-------------

2-5. Wi-Fi INTERFACE

Part No.	MAC-587IF-E
----------	-------------

2-6. REMOTE ON/OFF ADAPTOR

Part No.	PAC-SE55RA-E
----------	--------------

2-7. REMOTE DISPLAY ADAPTOR

Part No.	PAC-SA88HA-E
----------	--------------

2-8. REMOTE SENSOR

Part No.	PAC-SE41TS-E
----------	--------------

2-9. DRAIN PUMP KIT

Part No.	PAC-SK01DM-E
----------	--------------

2-10. VALVE KIT

Part No.	PAC-SK35VK-E
----------	--------------

2-11. V BLOCKING FILTER

Part No.	MAC-2470FT-E FOR PKFY-WL32-WL40 MAC-2471FT-E FOR PKFY-WL10-WL25
----------	--

MITSUBISHI ELECTRIC CORPORATION

HEAD OFFICE : TOKYO BUILDING, 2-7-3, MARUNOUCHI, CHIYODA-KU, TOKYO 100-8310, JAPAN

MITSUBISHI ELECTRIC CONSUMER PRODUCTS (THAILAND) CO., LTD.
 700/406 MOO 7, TAMBON DON HUA ROH,
 AMPHUR MUANG, CHONBURI 20000 THAILAND
 Issued: Feb. 2024. No. TCB072 REVISED EDITION-A
 Published: Oct. 2021. No. TCB072
 Made in Thailand

Specifications are subject to change without notice.