

# PARTS CATALOG

## Series PKFY Wall Mounted R32

Indoor unit

[Model Name]

 PKFY-MS10VLM-E  
 PKFY-MS10VLM-ET

[Service Ref.]

 PKFY-MS10VLM-E.TH  
 PKFY-MS10VLM-ET.TH

 PKFY-MS15VLM-E  
 PKFY-MS15VLM-ET

 PKFY-MS15VLM-E.TH  
 PKFY-MS15VLM-ET.TH

 PKFY-MS20VLM-E  
 PKFY-MS20VLM-ET

 PKFY-MS20VLM-E.TH  
 PKFY-MS20VLM-ET.TH

 PKFY-MS25VLM-E  
 PKFY-MS25VLM-ET

 PKFY-MS25VLM-E.TH  
 PKFY-MS25VLM-ET.TH

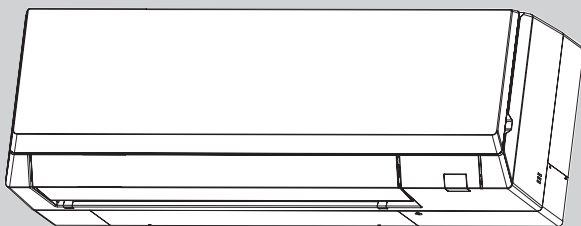
 PKFY-MS32VLM-E  
 PKFY-MS32VLM-ET

 PKFY-MS32VLM-E.TH  
 PKFY-MS32VLM-ET.TH

 PKFY-MS40VLM-E  
 PKFY-MS40VLM-ET

 PKFY-MS40VLM-E.TH  
 PKFY-MS40VLM-ET.TH

 PKFY-MS50VLM-E  
 PKFY-MS50VLM-ET

 PKFY-MS50VLM-E.TH  
 PKFY-MS50VLM-ET.TH


INDOOR UNIT

Model name  
indication

### CONTENTS

- |                             |   |
|-----------------------------|---|
| 1. SERVICE PARTS LIST ..... | 2 |
| 2. OPTIONAL PARTS .....     | 6 |

SERVICE MANUAL (OCH823)

# CITY MULTI

# 1

# SERVICE PARTS LIST

## 1-1. PANEL AND HEAT EXCHANGER PARTS

PKFY-MS10VLM-E.TH  
PKFY-MS10VLM-ET.TH

PKFY-MS15VLM-E.TH  
PKFY-MS15VLM-ET.TH

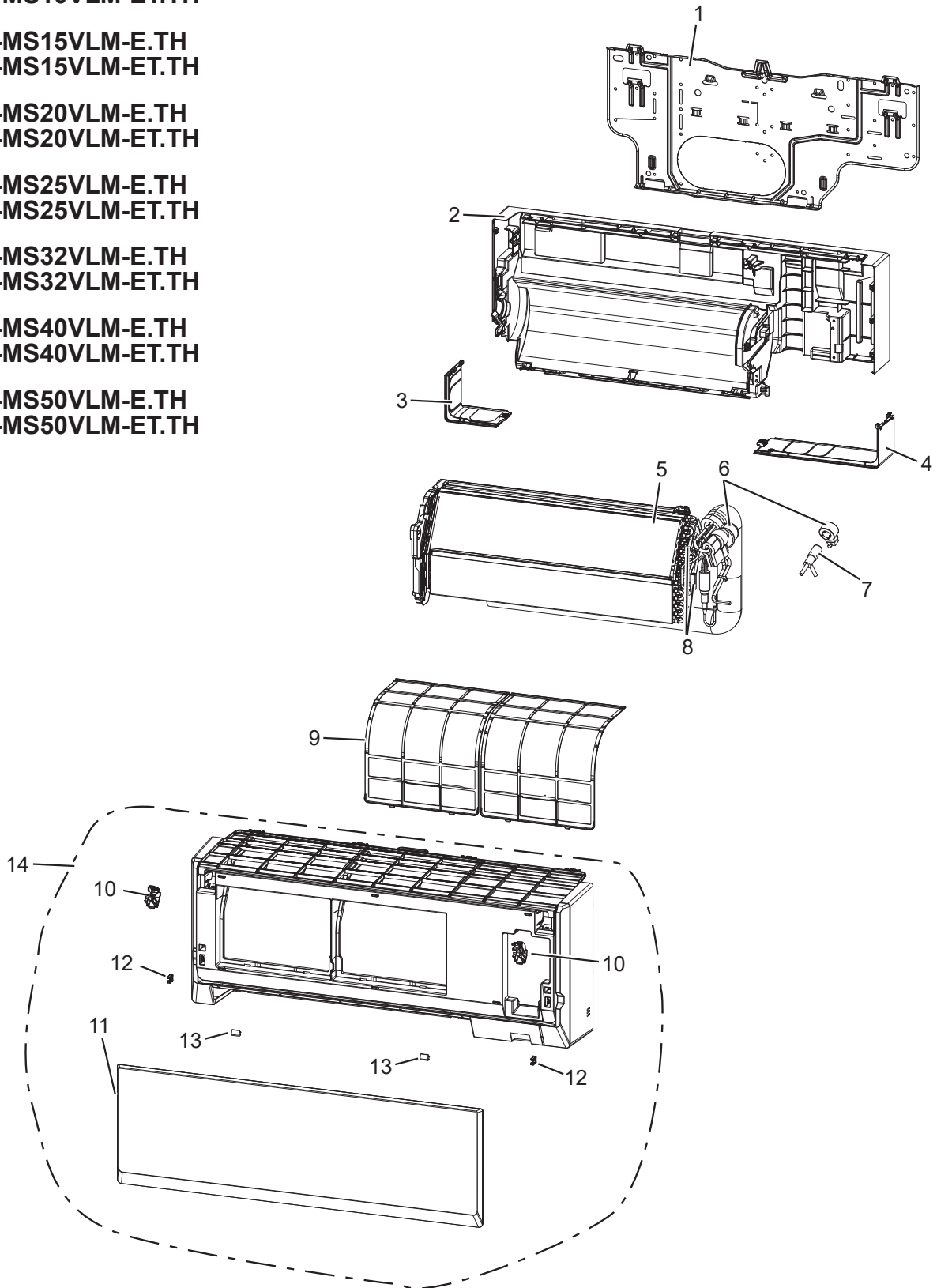
PKFY-MS20VLM-E.TH  
PKFY-MS20VLM-ET.TH

PKFY-MS25VLM-E.TH  
PKFY-MS25VLM-ET.TH

PKFY-MS32VLM-E.TH  
PKFY-MS32VLM-ET.TH

PKFY-MS40VLM-E.TH  
PKFY-MS40VLM-ET.TH

PKFY-MS50VLM-E.TH  
PKFY-MS50VLM-ET.TH



## PANEL AND HEAT EXCHANGER PARTS

1. The part quantity below indicates the required number of pieces per unit.
2. The circled No. indicates that the part is not shown in the figure.

No.	Part No.	Part Name	PKFY-MS10VLM-E.TH	PKFY-MS10VLM-ET.TH	PKFY-MS15VLM-E.TH	PKFY-MS15VLM-ET.TH	PKFY-MS20VLM-E.TH	PKFY-MS20VLM-ET.TH	PKFY-MS25VLM-E.TH	PKFY-MS25VLM-ET.TH	PKFY-MS32VLM-E.TH	PKFY-MS32VLM-ET.TH	PKFY-MS40VLM-E.TH	PKFY-MS40VLM-ET.TH	PKFY-MS50VLM-E.TH	PKFY-MS50VLM-ET.TH	Wiring Diagram Symbol	Remarks
1	E27 P63 970	INSTALLATION PLATE	1	1	1	1	1	1	1	1	1	1						
1	E27 P68 970	INSTALLATION PLATE											1	1	1	1		
2	E27 P63 234	BOX ASSEMBLY	1	1	1	1	1	1	1	1	1	1						
2	E27 P68 234	BOX ASSEMBLY											1	1	1	1		
3	E27 P63 976	CORNER BOX L	1	1	1	1	1	1	1	1	1	1	1	1	1	1		
4	E27 P63 975	CORNER BOX R	1	1	1	1	1	1	1	1	1	1	1	1	1	1		
5	E27 68R 620	INDOOR HEAT EXCHANGER	1	1														
5	E27 69R 620	INDOOR HEAT EXCHANGER			1	1	1	1	1	1	1	1						
5	E27 73R 620	INDOOR HEAT EXCHANGER											1	1	1	1		
6	E27 68R 493	LINER EXPANSION VALVE COIL	1	1	1	1	1	1	1	1	1	1	1	1	1	1		
7	E27 68R 640	LINER EXPANSION VALVE	1	1													LEV	(LEV body)
7	E27 69R 640	LINER EXPANSION VALVE			1	1	1	1	1	1	1	1	1	1	1	1	LEV	(LEV body)
8	E27 P63 307	INDOOR COIL THERMISTOR	1	1	1	1	1	1	1	1	1	1	1	1	1	1	TH22, TH23	
9	E27 65K 100	AIR FILTER	2	2	2	2	2	2	2	2	2	2						
9	E27 58G 100	AIR FILTER											2	2	2	2		
10	E27 P63 021	ARM HOLDER SET	1	1	1	1	1	1	1	1	1	1	1	1	1	1		Set (left, right)
11	E27 P63 010	FRONT PANEL	1	1	1	1	1	1	1	1	1	1						
11	E27 P68 010	FRONT PANEL											1	1	1	1		
12	E22 F95 142	CATCH	2	2	2	2	2	2	2	2	2	2	2	2	2	2		2 pcs/set
13	E22 98B 067	SCREW CAP	2	2	2	2	2	2	2	2	2	2	2	2	2	2		
14	E27 P63 000	PANEL ASSEMBLY	1	1	1	1	1	1	1	1	1	1						includes 10,11,12,13
14	E27 P68 000	PANEL ASSEMBLY											1	1	1	1		includes 10,11,12,13

**1-2. ELECTRICAL PARTS**

**PKFY-MS10VLM-E.TH  
PKFY-MS10VLM-ET.TH**

**PKFY-MS15VLM-E.TH  
PKFY-MS15VLM-ET.TH**

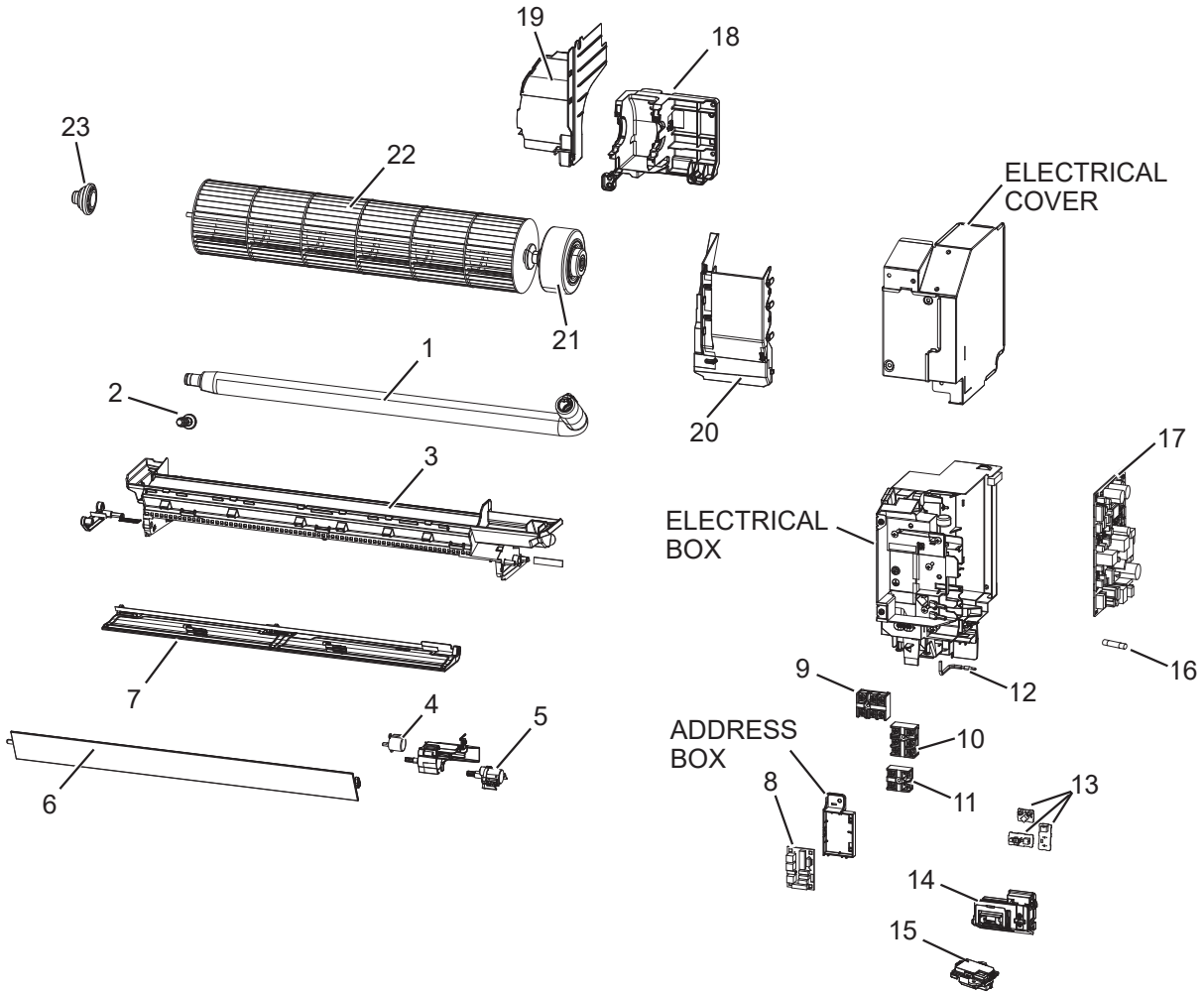
**PKFY-MS20VLM-E.TH  
PKFY-MS20VLM-ET.TH**

**PKFY-MS25VLM-E.TH  
PKFY-MS25VLM-ET.TH**

**PKFY-MS32VLM-E.TH  
PKFY-MS32VLM-ET.TH**

**PKFY-MS40VLM-E.TH  
PKFY-MS40VLM-ET.TH**

**PKFY-MS50VLM-E.TH  
PKFY-MS50VLM-ET.TH**



## ELECTRICAL PARTS

1. The part quantity below indicates the required number of pieces per unit.
2. The circled No. indicates that the part is not shown in the figure.

No.	Part No.	Part Name	PKFY-MS10VLM-E.TH	PKFY-MS10VLM-ET.TH	PKFY-MS15VLM-E.TH	PKFY-MS15VLM-ET.TH	PKFY-MS20VLM-E.TH	PKFY-MS20VLM-ET.TH	PKFY-MS25VLM-E.TH	PKFY-MS25VLM-ET.TH	PKFY-MS32VLM-E.TH	PKFY-MS32VLM-ET.TH	PKFY-MS40VLM-E.TH	PKFY-MS40VLM-ET.TH	PKFY-MS50VLM-E.TH	PKFY-MS50VLM-ET.TH	Wiring Diagram Symbol	Remarks
1	E22 T20 702	DRAIN HOSE	1	1	1	1	1	1	1	1	1	1	1	1	1	1		
2	E27 42R 705	DRAIN CAP	1	1	1	1	1	1	1	1	1	1	1	1	1	1		
3	E27 76G 235	NOZZLE ASSEMBLY	1	1	1	1	1	1	1	1	1	1						full assembly except drain hose
3	E27 77G 235	NOZZLE ASSEMBLY											1	1	1	1		full assembly except drain hose
4	E27 103 303	VANE MOTOR (UPPER)	1	1	1	1	1	1	1	1	1	1	1	1	1	1	MV1	
5	E22 Y54 303	VANE MOTOR (LOWER)	1	1	1	1	1	1	1	1	1	1	1	1	1	1	MV2	
6	E27 76G 040	VANE UPPER	1	1	1	1	1	1	1	1	1	1						
6	E27 77G 040	VANE UPPER											1	1	1	1		
7	E27 76G 041	VANE LOWER	1	1	1	1	1	1	1	1	1	1						
7	E27 77G 041	VANE LOWER											1	1	1	1		
8	E27 696 456	ADDRESS BOARD	1	1	1	1	1	1	1	1	1	1	1	1	1	1	A.B.	
9	E27 518 375	TERMINAL BLOCK	1	1	1	1	1	1	1	1	1	1	1	1	1	1	TB2	
10	E27 519 375	TERMINAL BLOCK	1	1	1	1	1	1	1	1	1	1	1	1	1	1	TB5	
11	E27 249 375	TERMINAL BLOCK	1	1	1	1	1	1	1	1	1	1	1	1	1	1	TB15	
12	E27 P63 308	ROOM TEMP. THERMISTOR	1	1	1	1	1	1	1	1	1	1	1	1	1	1	TH21	
13	E27 P63 468	DISPLAY AND RECEIVER P.C. BOARD	1	1	1	1	1	1	1	1	1	1	1	1	1	1	L.B., W.B., S.B.	
14	E27 P63 095	DISPLAY RECEIVER HOLDER	1	1	1	1	1	1	1	1	1	1	1	1	1	1		
15	E27 68R 391	R32 SENSOR	1	1	1	1	1	1	1	1	1	1	1	1	1	1	Refrigerant sensor	
16	E22 A49 382	FUSE	1	1	1	1	1	1	1	1	1	1	1	1	1	1	F1	T3.15AL250V
17	E27 68R 447	INDOOR CONTROLLER BOARD	1	1	1	1	1	1	1	1	1	1	1	1	1	1	I.B.	
18	E27 P64 333	MOTOR BED	1	1	1	1	1	1	1	1	1	1	1	1	1	1		
19	E27 P63 333	MOTOR BAND	1	1	1	1	1	1	1	1	1	1	1	1	1	1		
20	E27 P63 541	WATER COVER	1	1	1	1	1	1	1	1	1	1	1	1	1	1		
21	E27 P63 300	INDOOR FAN MOTOR	1	1	1	1	1	1	1	1	1	1	1	1	1	1	MF	includes rubber mounts
22	E27 P63 302	LINE FLOW FAN	1	1	1	1	1	1	1	1	1	1						
22	E27 P68 302	LINE FLOW FAN											1	1	1	1		
23	E22 A89 509	BEARING MOUNT ASSEMBLY	1	1	1	1	1	1	1	1	1	1	1	1	1	1		
24	E22 C32 667	UNION 1/4"	1	1	1	1	1	1	1	1	1	1	1	1	1	1		for liquid
25	E22 179 667	UNION 1/2"	1	1	1	1	1	1	1	1	1	1	1	1	1	1		for gas

**2****OPTIONAL PARTS**

<b>Parts name</b>	<b>Parts No.</b>
WIRELESS REMOTE CONTROLLER	PAR-FL32MA-E PAR-SL101A-E
WIRED REMOTE CONTROLLER (MA REMOTE CONTROLLER)	PAR-41MAAB
WIRED REMOTE CONTROLLER (SIMPLE MA REMOTE CONTROLLER)	PAC-YT52CRA
WIRED REMOTE CONTROLLER (SMART ME CONTROLLER)	PAR-U02MEDA
Wi-Fi INTERFACE	MAC-5871F-E
REMOTE ON/OFF ADAPTOR	PAC-SE55RA-E
REMOTE DISPLAY ADAPTOR	PAC-SA88HA-E
REMOTE SENSOR	PAC-SE41TS-E
DRAIN PUMP KIT	PAC-SK01DM-E
V BLOCKING FILTER	MAC-2471FT-E *1 MAC-2470FT-E *2
PLASMA QUAD CONNECT	MAC-100FT-E

\*1 For PKFY-P10/15/20/25/32VLM

\*2 For PKFY-P40/50VLM

**MITSUBISHI ELECTRIC CORPORATION**

HEAD OFFICE: TOKYO BUILDING, 2-7-3, MARUNOUCHI, CHIYODA-KU, TOKYO 100-8310, JAPAN