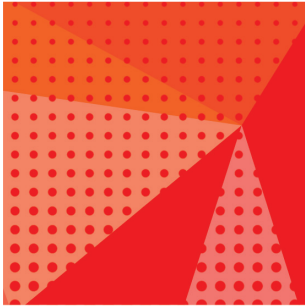


AIR CONDITIONING SYSTEMS

**HYBRID**  
CITY MULTI



# DATA BOOK

MODEL

**PEFY-WP-VMA-E**



**PEFY-WP-VMA-E**

1. SPECIFICATIONS .....	2
2. EXTERNAL DIMENSIONS .....	5
3. CENTER OF GRAVITY .....	9
4. ELECTRICAL WIRING DIAGRAMS .....	10
5. SOUND LEVELS .....	11
5-1. Sound levels .....	11
5-2. NC curves .....	12
6. FAN CHARACTERISTICS CURVES.....	18
7. ELECTRICAL CHARACTERISTICS .....	24
8. OPTIONAL PARTS.....	25
8-1. Optional parts line up for the Indoor unit.....	25
8-2. Filter box .....	25
8-3. Plasma Quad Connect.....	26

# 1. SPECIFICATIONS

Ceiling concealed (Medium static pressure type)

PEFY-WP-VMA-E

Model		PEFY-WP20VMA-E	PEFY-WP25VMA-E	PEFY-WP32VMA-E	PEFY-WP40VMA-E	
Power source		1-phase 220-230-240 V 50/60 Hz	1-phase 220-230-240 V 50/60 Hz	1-phase 220-230-240 V 50/60 Hz	1-phase 220-230-240 V 50/60 Hz	
Cooling capacity (Nominal)	*1 kW	2.2	2.8	3.6	4.5	
	*1 BTU/h	7,500	9,600	12,300	15,400	
(220V)	*2 Power input kW	0.070	0.090	0.110	0.140	
	*2 Current input A	0.55	0.64	0.74	1.15	
Heating capacity (Nominal)	*3 kW	2.5	3.2	4.0	5.0	
	*3 BTU/h	8,500	10,900	13,600	17,100	
(220V)	*2 Power input kW	0.050	0.070	0.090	0.120	
	*2 Current input A	0.44	0.53	0.63	1.04	
External finish		Galvanized steel plate	Galvanized steel plate	Galvanized steel plate	Galvanized steel plate	
External dimension H x W x D		mm	250 x 700 x 732	250 x 900 x 732	250 x 1,100 x 732	
		in.	9-7/8 x 27-9/16 x 28-7/8	9-7/8 x 35-7/16 x 28-7/8	9-7/8 x 35-7/16 x 28-7/8	9-7/8 x 43-5/16 x 28-7/8
Net weight		kg (lbs)	21 (47)	26 (58)	31 (69)	
Heat exchanger		Cross fin (Aluminum fin and copper tube)				
		Water Volume L	0.7	1.0	1.0	1.8
FAN		Type x Quantity				
		Sirocco fan x 1				
*4	External static press.	Pa	<35> - 50 - <70> - <100> - <150>	<35> - 50 - <70> - <100> - <150>	<35> - 50 - <70> - <100> - <150>	<35> - 50 - <70> - <100> - <150>
		mmH <sub>2</sub> O	<3.6> - 5.1 - <7.1> - <10.2> - <15.3>	<3.6> - 5.1 - <7.1> - <10.2> - <15.3>	<3.6> - 5.1 - <7.1> - <10.2> - <15.3>	<3.6> - 5.1 - <7.1> - <10.2> - <15.3>
Motor Type		DC motor				
Motor output kW		0.085				
Driving mechanism		Direct-driven by motor				
Air flow rate		(Low-Mid-High)				
		m <sup>3</sup> /min	7.5 - 9.0 - 10.5	10.0 - 12.0 - 14.0	12.0 - 14.5 - 17.0	14.5 - 18.0 - 21.0
		L/s	125 - 150 - 175	167 - 200 - 233	200 - 242 - 283	242 - 300 - 350
		cfm	265 - 318 - 371	353 - 424 - 494	424 - 512 - 600	512 - 636 - 742
Sound pressure level (measured in anechoic room)		(Low-Mid-High)				
*2 dB <A>		23.0-26.0-29.0				
Insulation material		EPS, Polyethylene foam, Urethane foam				
Air filter		PP honeycomb fabric.				
Protection device		Fuse				
Refrigerant control device		-				
Connectable HBC		CMB-WM-V-AA, CMB-WM-F-AA, CMB-WM-V-BB				
Water piping diameter *5, 6						
Connection size	Inlet	in. Rc 3/4 screw				
	Outlet	in. Rc 3/4 screw				
Field pipe size	Inlet	mm I.D. 20				
	Outlet	mm I.D. 20				
Field drain pipe size		mm (in.) O.D.32 (1-1/4)				
Drawing		External KD94L918				
		Wiring KD94L919				
		Refrigerant cycle -				
Standard attachment		Document Installation Manual, Instruction Book				
		Accessory Insulation pipe for water pipe, Washer, Drain hose, Tie band				
Optional parts		Filter box PAC-KE91TB-E				
		Plasma Quad Connect MAC-100FT-E				
		PQ attachment (Rear inlet) PAC-HA31PAR				
		PQ attachment (Bottom inlet) PAC-HA31PAU				
		PQ box PAC-KE91PTB-E				
Remarks		* Details on foundation work, duct work, insulation work, electrical wiring, power source switch, and other items shall be referred to the Installation Manual. * Due to continuing improvement, above specifications may be subject to change without notice.				

Notes:	Unit converter
1. Nominal cooling conditions Indoor: 27°C D.B./19°C W.B. (81°F D.B./66°F W.B.), Outdoor: 35°C D.B. (95°F D.B.) Pipe length: 7.5 m (24-9/16 ft.), Level difference: 0 m (0 ft.)	BTU/h = kW x 3,412
2. The values are measured at the factory setting of external static pressure.	cfm = m <sup>3</sup> /min x 35.31
3. Nominal heating conditions Indoor: 20°C D.B. (68°F D.B.), Outdoor: 7°C D.B./6°C W.B. (45°F D.B./43°F W.B.) Pipe length: 7.5 m (24-9/16 ft.), Level difference: 0 m (0 ft.)	lbs = kg/0.4536
4. The factory setting of external static pressure is shown without < >. Refer to "Fan characteristics curves", according to the external static pressure, in DATA BOOK for the usable range of air flow rate.	
5. Be sure to install a valve on the water outlet.	
6. Install a strainer (40 mesh or more) on the pipe next to the valve to remove the foreign matters.	
7. Please group units that operate on 1 branch.	*Above specification data is subject to rounding variation.

# 1. SPECIFICATIONS

Ceiling concealed (Medium static pressure type)

Model			PEFY-WP50VMA-E	PEFY-WP63VMA-E	PEFY-WP71VMA-E	PEFY-WP80VMA-E	
Power source			1-phase 220-230-240 V 50/60 Hz	1-phase 220-230-240 V 50/60 Hz	1-phase 220-230-240 V 50/60 Hz	1-phase 220-230-240 V 50/60 Hz	
Cooling capacity (Nominal)	*1	kW	5.6	7.1	8.0	9.0	
	*1	BTU/h	19,100	24,200	27,300	30,700	
(220V)	*2	Power input	0.140	0.140	0.240	0.240	
	*2	Current input	A	1.15	1.15	1.47	
Heating capacity (Nominal)	*3	kW	6.3	8.0	9.0	10.0	
	*3	BTU/h	21,500	27,300	30,700	34,100	
(220V)	*2	Power input	kW	0.120	0.120	0.220	
	*2	Current input	A	1.04	1.04	1.36	
External finish			Galvanized steel plate	Galvanized steel plate	Galvanized steel plate	Galvanized steel plate	
External dimension H × W × D			mm	250 x 1,100 x 732	250 x 1,100 x 732	250 x 1,400 x 732	
			in.	9-7/8 x 43-5/16 x 28-7/8	9-7/8 x 43-5/16 x 28-7/8	9-7/8 x 55-1/8 x 28-7/8	9-7/8 x 55-1/8 x 28-7/8
Net weight			kg (lbs)	31 (69)	31 (69)	40 (89)	
Heat exchanger			Cross fin (Aluminum fin and copper tube)				
			Water Volume	L	1.8	2.0	2.6
FAN	Type × Quantity		Sirocco fan x 2				
	*4	External static press.	Pa	<35> - 50 - <70> - <100> - <150>	<35> - 50 - <70> - <100> - <150>	<35> - 50 - <70> - <100> - <150>	<35> - 50 - <70> - <100> - <150>
			mmH <sub>2</sub> O	<3.6> - 5.1 - <7.1> - <10.2> - <15.3>	<3.6> - 5.1 - <7.1> - <10.2> - <15.3>	<3.6> - 5.1 - <7.1> - <10.2> - <15.3>	<3.6> - 5.1 - <7.1> - <10.2> - <15.3>
	Motor Type		DC motor				
	Motor output		kW				
	Driving mechanism		Direct-driven by motor				
	Air flow rate		(Low-Mid-High)				
			m <sup>3</sup> /min	14.5 - 18.0 - 21.0	14.5 - 18.0 - 21.0	23.0 - 28.0 - 33.0	23.0 - 28.0 - 33.0
			L/s	242 - 300 - 350	242 - 300 - 350	383 - 467 - 550	383 - 467 - 550
			cfm	512 - 636 - 742	512 - 636 - 742	812 - 989 - 1,165	812 - 989 - 1,165
Sound pressure level (measured in anechoic room)			(Low-Mid-High)				
			*2	dB <A>	26.0-29.0-34.0	26.0-29.0-34.0	28.0-33.0-37.0
Insulation material			EPS, Polyethylene foam, Urethane foam				
Air filter			PP honeycomb fabric.				
Protection device			Fuse				
Refrigerant control device			-				
Connectable HBC			CMB-WM-V-AA, CMB-WM-F-AA, CMB-WM-V-BB				
Water piping diameter			*5, 6				
Connection size	Inlet	in.	Rc 3/4 screw	Rc 1-1/4 screw	Rc 1-1/4 screw	Rc 1-1/4 screw	
		Outlet	Rc 3/4 screw	Rc 1-1/4 screw	Rc 1-1/4 screw	Rc 1-1/4 screw	
	Field pipe size	Inlet	mm I.D.	20	30	30	30
		Outlet	mm I.D.	20	30	30	30
Field drain pipe size			mm (in.)				
			O.D.32 (1-1/4)				
Drawing	External		KD94L918				
	Wiring		KD94L919				
	Refrigerant cycle		-				
Standard attachment	Document		Installation Manual, Instruction Book				
	Accessory		Insulation pipe for water pipe, Washer, Drain hose, Tie band				
Optional parts	Filter box		PAC-KE93TB-E				
	Plasma Quad Connect		MAC-100FT-E				
	PQ attachment (Rear inlet)		PAC-HA31PAR				
	PQ attachment (Bottom inlet)		PAC-HA31PAU				
	PQ box		PAC-KE93PTB-E				
Remarks			* Details on foundation work, duct work, insulation work, electrical wiring, power source switch, and other items shall be referred to the Installation Manual. * Due to continuing improvement, above specifications may be subject to change without notice.				

Notes:	Unit converter
1. Nominal cooling conditions Indoor: 27°C D.B./19°C W.B. (81°F D.B./66°F W.B.), Outdoor: 35°C D.B. (95°F D.B.) Pipe length: 7.5 m (24-9/16 ft.), Level difference: 0 m (0 ft.)	BTU/h = kW × 3,412
2. The values are measured at the factory setting of external static pressure.	cfm = m <sup>3</sup> /min × 35.31
3. Nominal heating conditions Indoor: 20°C D.B. (68°F D.B.), Outdoor: 7°C D.B./6°C W.B. (45°F D.B./43°F W.B.) Pipe length: 7.5 m (24-9/16 ft.), Level difference: 0 m (0 ft.)	lbs = kg/0.4536
4. The factory setting of external static pressure is shown without < >. Refer to "Fan characteristics curves", according to the external static pressure, in DATA BOOK for the usable range of air flow rate.	
5. Be sure to install a valve on the water outlet.	
6. Install a strainer (40 mesh or more) on the pipe next to the valve to remove the foreign matters.	
7. Please group units that operate on 1 branch.	*Above specification data is subject to rounding variation.

# 1. SPECIFICATIONS

Ceiling concealed (Medium static pressure type)

PEFY-WP-VMA-E

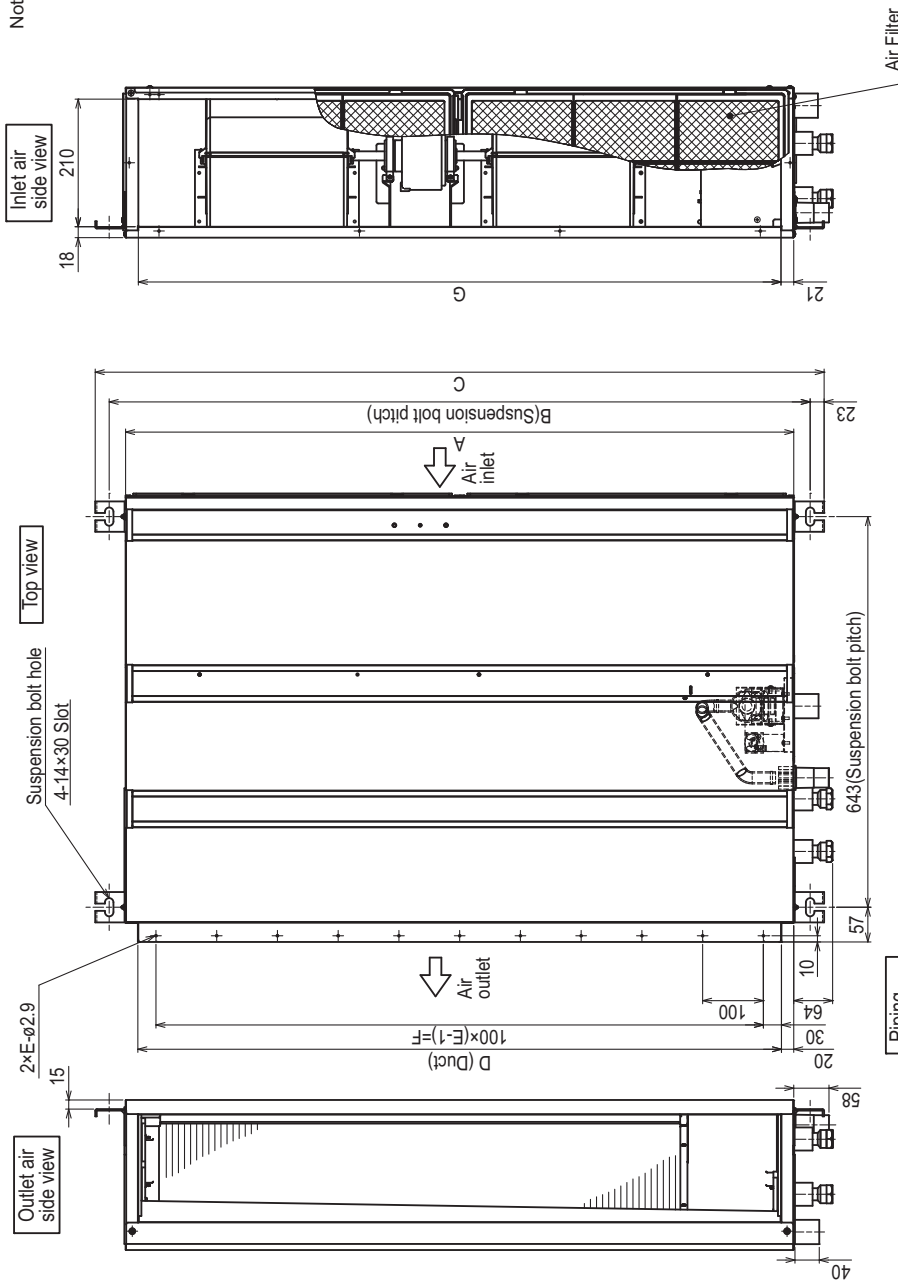
Model		PEFY-WP100VMA-E	PEFY-WP125VMA-E		
Power source		1-phase 220-230-240 V 50/60 Hz	1-phase 220-230-240 V 50/60 Hz		
Cooling capacity (Nominal)	*1 kW	11.2	14.0		
	*1 BTU/h	38,200	47,800		
(220V)	*2 Power input kW	0.240	0.360		
	*2 Current input A	1.47	2.21		
Heating capacity (Nominal)	*3 kW	12.5	16.0		
	*3 BTU/h	42,700	54,600		
(220V)	*2 Power input kW	0.220	0.340		
	*2 Current input A	1.36	2.10		
External finish		Galvanized steel plate	Galvanized steel plate		
External dimension H x W x D		mm	250 x 1,400 x 732	250 x 1,600 x 732	
		in.	9-7/8 x 55-1/8 x 28-7/8	9-7/8 x 63 x 28-7/8	
Net weight		kg (lbs)	40 (89)	42 (93)	
Heat exchanger		Cross fin (Aluminum fin and copper tube)		Cross fin (Aluminum fin and copper tube)	
		Water Volume	L	2.6	3.0
FAN	Type x Quantity		Sirocco fan x 2	Sirocco fan x 2	
	*4 External static press.	Pa	<35> - 50 - <70> - <100> - <150>	<35> - 50 - <70> - <100> - <150>	
		mmH <sub>2</sub> O	<3.6> - 5.1 - <7.1> - <10.2> - <15.3>	<3.6> - 5.1 - <7.1> - <10.2> - <15.3>	
	Motor Type		DC motor	DC motor	
	Motor output kW		0.244	0.244	
	Driving mechanism		Direct-driven by motor	Direct-driven by motor	
	Air flow rate		(Low-Mid-High)		(Low-Mid-High)
			m <sup>3</sup> /min	23.0 - 28.0 - 33.0	29.5 - 35.5 - 42.0
L/s			383 - 467 - 550	492 - 592 - 700	
		cfm	812 - 989 - 1,165	1,042 - 1,254 - 1,483	
Sound pressure level (measured in anechoic room)		(Low-Mid-High)		(Low-Mid-High)	
		*2 dB <A>	28.0-33.0-37.0	32.0-36.0-40.0	
Insulation material		EPS, Polyethylene foam, Urethane foam	EPS, Polyethylene foam, Urethane foam		
Air filter		PP honeycomb fabric.	PP honeycomb fabric.		
Protection device		Fuse	Fuse		
Refrigerant control device		-	-		
Connectable HBC		CMB-WM-V-AA, CMB-WM-F-AA, CMB-WM-V-BB	CMB-WM-V-AA, CMB-WM-F-AA, CMB-WM-V-BB		
Water piping diameter *5, 6					
Connection size	Inlet	in.	Rc 1-1/4 screw	Rc 1-1/4 screw	
	Outlet	in.	Rc 1-1/4 screw	Rc 1-1/4 screw	
Field pipe size	Inlet	mm I.D.	30	30	
	Outlet	mm I.D.	30	30	
Field drain pipe size		mm (in.)	O.D.32 (1-1/4)	O.D.32 (1-1/4)	
Drawing	External		KL94G001	KL94G001	
	Wiring		KD94L919	KD94L919	
	Refrigerant cycle		-	-	
Standard attachment	Document		Installation Manual, Instruction Book	Installation Manual, Instruction Book	
	Accessory		Insulation pipe for water pipe, Washer, Drain hose, Tie band	Insulation pipe for water pipe, Washer, Drain hose, Tie band	
Optional parts	Filter box		PAC-KE94TB-E	PAC-KE95TB-E	
	Plasma Quad Connect		MAC-100FT-E	MAC-100FT-E	
	PQ attachment (Rear inlet)		PAC-HA31PAR	PAC-HA31PAR	
	PQ attachment (Bottom inlet)		PAC-HA31PAU	PAC-HA31PAU	
	PQ box		PAC-KE94PTB-E	PAC-KE95PTB-E	
Remarks		* Details on foundation work, duct work, insulation work, electrical wiring, power source switch, and other items shall be referred to the Installation Manual. * Due to continuing improvement, above specifications may be subject to change without notice.			

Notes:	Unit converter
1. Nominal cooling conditions Indoor: 27°C D.B./19°C W.B. (81°F D.B./66°F W.B.), Outdoor: 35°C D.B. (95°F D.B.) Pipe length: 7.5 m (24-9/16 ft.), Level difference: 0 m (0 ft.)	BTU/h = kW x 3,412
2. The values are measured at the factory setting of external static pressure.	cfm = m <sup>3</sup> /min x 35.31
3. Nominal heating conditions Indoor: 20°C D.B. (68°F D.B.), Outdoor: 7°C D.B./6°C W.B. (45°F D.B./43°F W.B.) Pipe length: 7.5 m (24-9/16 ft.), Level difference: 0 m (0 ft.)	lbs = kg/0.4536
4. The factory setting of external static pressure is shown without < >. Refer to "Fan characteristics curves", according to the external static pressure, in DATA BOOK for the usable range of air flow rate.	
5. Be sure to install a valve on the water outlet.	
6. Install a strainer (40 mesh or more) on the pipe next to the valve to remove the foreign matters.	
7. Please group units that operate on 1 branch.	*Above specification data is subject to rounding variation.

PEFY-WP20, 25, 32, 40, 50VMA-E

Unit: mm

- Note 1. Use M10 screw for the Suspension bolt (field supply).  
 2. Keep the service space for the maintenance at the bottom.  
 3. This chart indicates for PEFY-WP40-50VMA-E models, which have 2 fans. PEFY-WP20, 25-32VMA-E models have 1 fan.  
 4. In case of the inlet duct is used, remove the air filter (supply with the unit), then install the filter (field supply) at suction side.



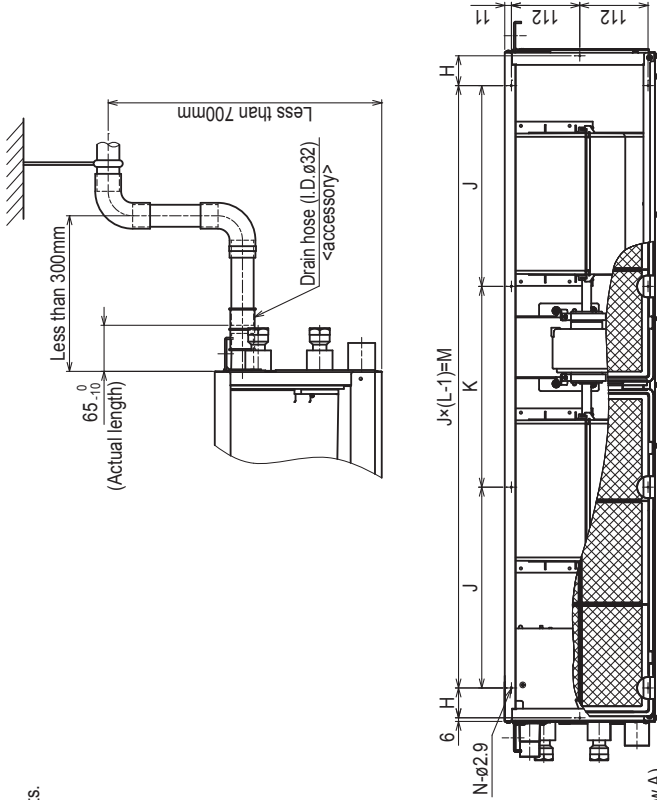
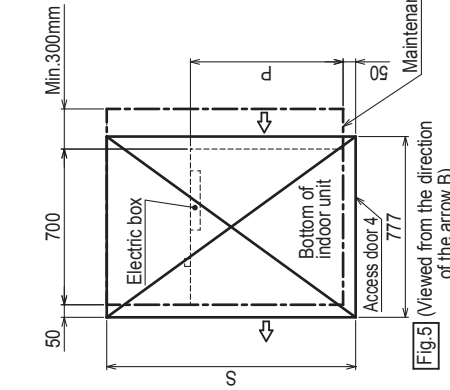
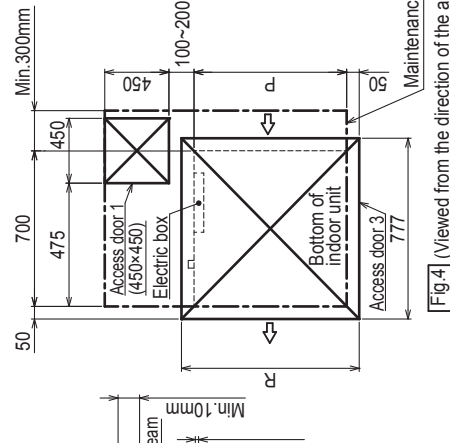
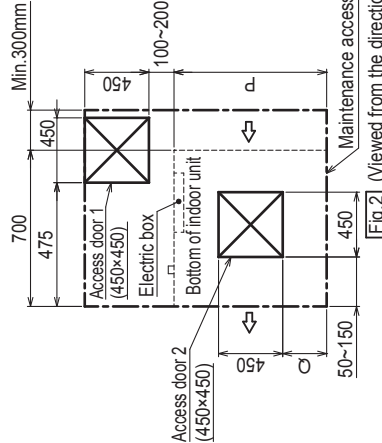
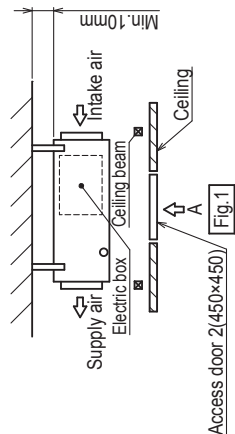
Model	A	B	C	D	E	F	G	① Water pipe (From HBC unit)	② Water pipe (To HBC unit)
PEFY-WP20VMA-E	700	754	800	660	7	600	658	Rc3/4 screw	
PEFY-WP25, 32VMA-E	900	954	1000	860	9	800	858		
PEFY-WP40, 50VMA-E	1100	1154	1200	1060	11	1000	1058		

PEFY-WP20, 25, 32, 40, 50VMA-E

Unit: mm

[Maintenance access space]  
 Secure enough access space to allow for the maintenance, inspection, and replacement of the motor, fan, drain pump, heat exchanger, and electric box in one of the following ways.  
 Select an installation site for the indoor unit so that its maintenance access space will not be obstructed by beams or other objects.

- (1) When a space of 300mm or more is available below the unit between the unit and the ceiling. (Fig.1)
- Create access door 1 and 2 (450x450mm each) as shown in Fig.2.
- (Access door 2 is not required if enough space is available below the unit for a maintenance worker to work in.)
- (2) When a space of less than 300mm is available below the unit between the unit and the ceiling. (At least 20mm of space should be left below the unit as shown in Fig.3.)
- Create access door 1 diagonally below the electric box and access door 3 below the unit as shown in Fig.4.
- or
- Create access door 4 below the electric box and the unit as shown in Fig.5.

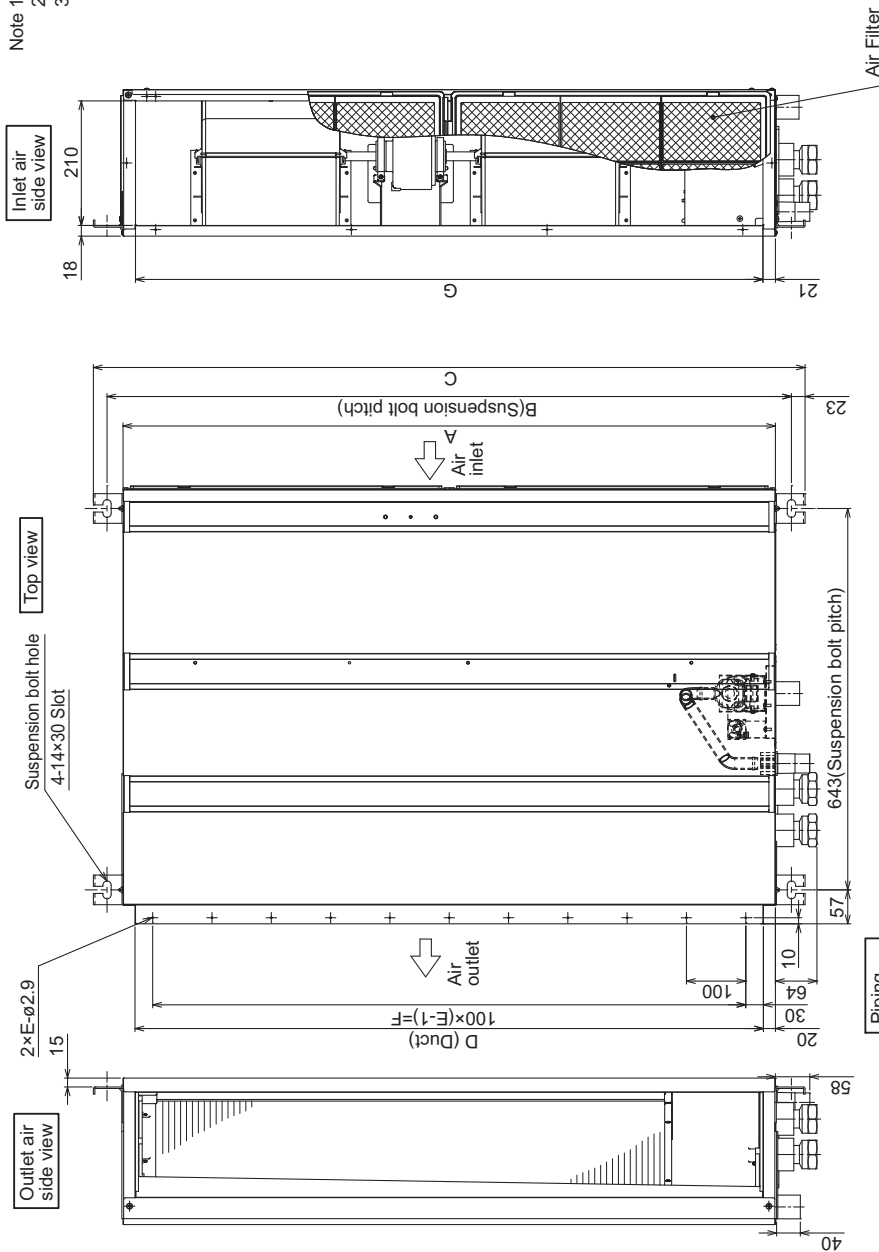


Model	H	J	K	L	M	N	P	Q	R	S
PEFY-WP20VMA-E	44	150	300	10	700	50-150	800	1300		
PEFY-WP25.32VMA-E	54	260	4	780	10	900	150-250	1000	1500	
PEFY-WP40.50VMA-E	49	330	4	990	10	1100	250-350	1200	1700	

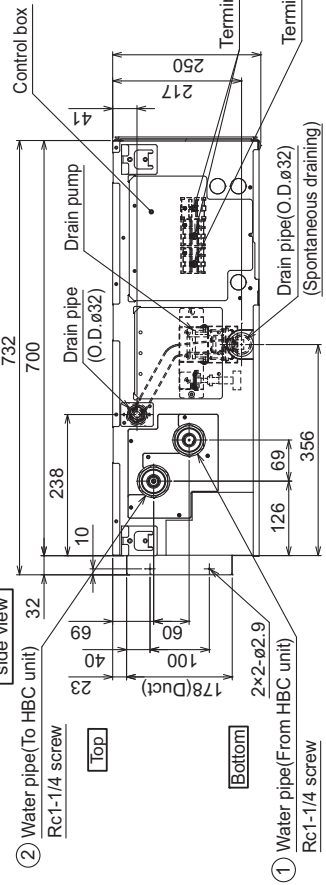
PEFY-WP63, 71, 80, 100, 125VMA-E

Unit: mm

- Note 1. Use an M10 screw for the Suspension bolt (field supply).  
 2. Keep the service space for the maintenance at the bottom.  
 3. In case of the inlet duct is used, remove the air filter (supply with the unit) then install the filter (field supply) at suction side.



Model	A	B	C	D	E	F	G	① Water pipe (From HBC unit)	② Water pipe (To HBC unit)
PEFY-WP63VMA-E	1100	1154	1200	1060	11	1000	1058	Rc 1-1/4 screw	
PEFY-WP71,80,100VMA-E	1400	1454	1500	1360	14	1300	1358		
PEFY-WP125VMA-E	1600	1654	1700	1560	16	1500	1558		



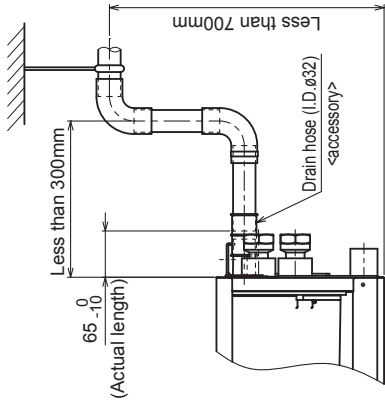
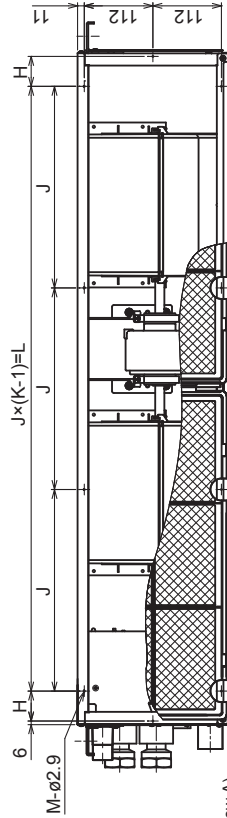
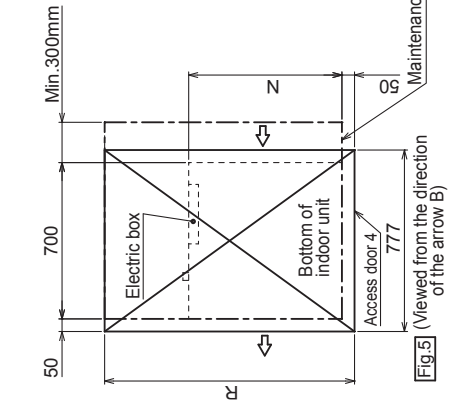
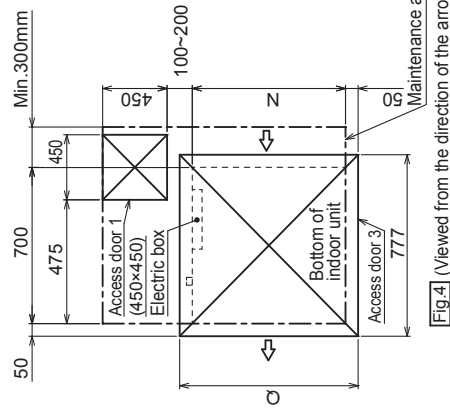
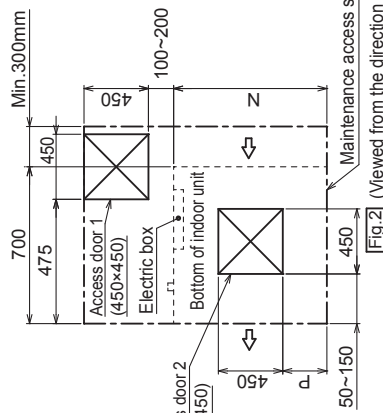
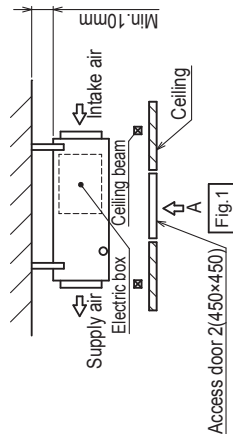


PEFY-WP63, 71, 80, 100, 125VMA-E

Unit: mm

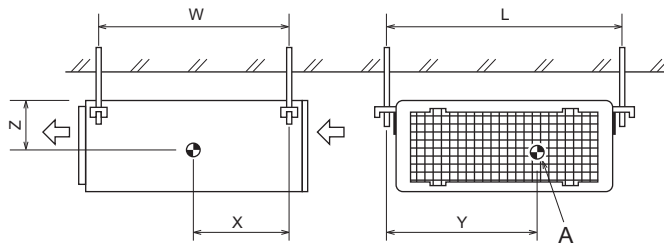
[Maintenance access space]  
 Secure enough access space to allow for the maintenance, inspection, and replacement of the motor, fan, drain pump, heat exchanger, and electric box in one of the following ways.  
 Select an installation site for the indoor unit so that its maintenance access space will not be obstructed by beams or other objects.

- (1) When a space of 300mm or more is available below the unit between the unit and the ceiling. (Fig.1)  
 -Create access door 1 and 2 (450×450mm each) as shown in Fig.2.  
 (Access door 2 is not required if enough space is available below the unit for a maintenance worker to work in.)
- (2) When a space of less than 300mm is available below the unit between the unit and the ceiling.  
 (At least 20mm of space should be left below the unit as shown in Fig.3.)  
 -Create access door 1 diagonally below the electric box and access door 3 below the unit as shown in Fig.4.  
 or  
 -Create access door 4 below the electric box and the unit as shown in Fig.5.



Model	H	J	K	L	M	N	P	Q	R
PEFY-WP63VMA-E	49	330	4	990	10	1100	250~350	1200	1700
PEFY-WP71.80.100VMA-E	54	320	5	1280	12	1400	400~500	1500	2000
PEFY-WP125VMA-E	54	370	5	1480	12	1600	500~600	1700	2200

PEFY-WP20, 25, 32, 40, 50, 63, 71, 80, 100, 125VMA-E

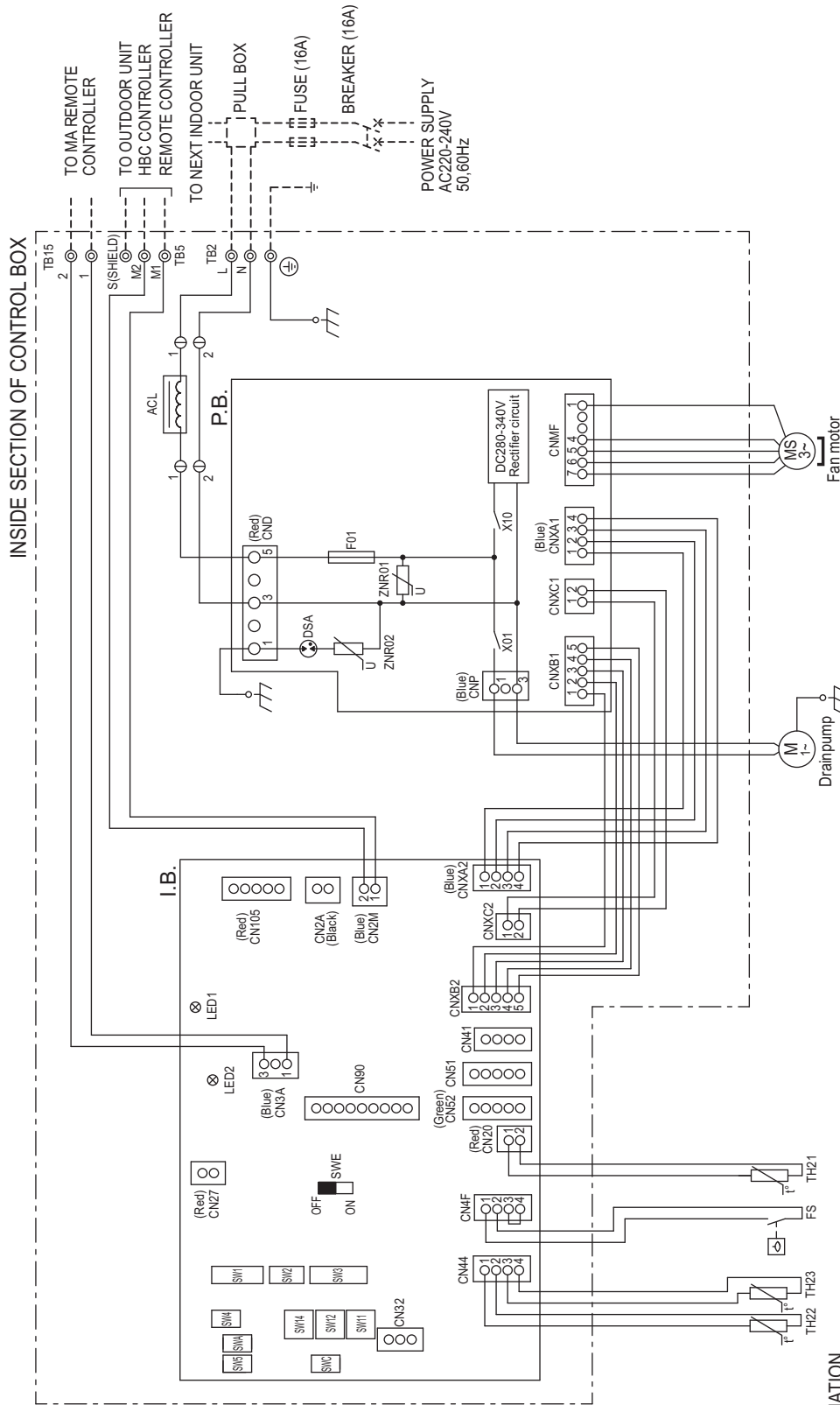


A : Center of gravity

(mm)[in]

Model name	W	L	X	Y	Z
PEFY-WP20VMA-E	643 [25 - 6/16]	754 [29 - 11/16]	330 [13]	300 [11 - 13/16]	130 [5 - 2/16]
PEFY-WP25VMA-E	643 [25 - 6/16]	954 [37 - 9/16]	340 [13 - 7/16]	375 [14 - 13/16]	130 [5 - 2/16]
PEFY-WP32VMA-E	643 [25 - 6/16]	954 [37 - 9/16]	340 [13 - 7/16]	375 [14 - 13/16]	130 [5 - 2/16]
PEFY-WP40VMA-E	643 [25 - 6/16]	1154 [45 - 7/16]	325 [12 - 13/16]	525 [20 - 11/16]	130 [5 - 2/16]
PEFY-WP50VMA-E	643 [25 - 6/16]	1154 [45 - 7/16]	325 [12 - 13/16]	525 [20 - 11/16]	130 [5 - 2/16]
PEFY-WP63VMA-E	643 [25 - 6/16]	1154 [45 - 7/16]	325 [12 - 13/16]	525 [20 - 11/16]	130 [5 - 2/16]
PEFY-WP71VMA-E	643 [25 - 6/16]	1454 [57 - 4/16]	330 [13]	675 [26 - 10/16]	130 [5 - 2/16]
PEFY-WP80VMA-E	643 [25 - 6/16]	1454 [57 - 4/16]	330 [13]	675 [26 - 10/16]	130 [5 - 2/16]
PEFY-WP100VMA-E	643 [25 - 6/16]	1454 [57 - 4/16]	330 [13]	675 [26 - 10/16]	130 [5 - 2/16]
PEFY-WP125VMA-E	643 [25 - 6/16]	1654 [65 - 2/16]	332 [13 - 2/16]	725 [28 - 9/16]	130 [5 - 2/16]

PEFY-WP20, 25, 32, 40, 50, 63, 71, 80, 100, 125VMA-E



NOTE: Symbols used in wiring diagram above are,  
 ⊕ : Connector  
 ⊙ : Terminal  
 ----- (Heavy dotted line): Field wiring

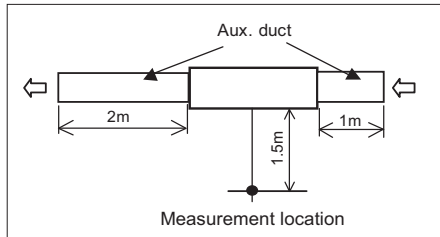
SYMBOL EXPLANATION

SYMBOL	NAME	SYMBOL	NAME	SYMBOL	NAME
I.B.	Indoor controller board	CN41	Connector (HA terminal-A)	SW4(L.B.)	Switch (for model selection)
P.B.	Power supply board	CN51	Connector (Centrally control)	SW5(L.B.)	Switch (for mode selection)
TB2	Power source terminal block	CN52	Connector (Remote indication)	SW11(L.B.)	Switch (1s digit address set)
TB5	Transmission terminal block	CN90	Connector (Wireless)	SW12(L.B.)	Switch (10ths digit address set)
TB15	Transmission terminal block	CN105	Connector (IT terminal)	SW14(L.B.)	Switch (BRANCH No.)
F01	Fuse AC250V 6.3A	CN2A	Connector (0-10V Analog input)	SWA(L.B.)	Switch (for static pressure selection)
ZNR01,02	Varistor	FS	Float switch	SWC(L.B.)	Switch (for static pressure selection)
DSA	Arrester	TH21	Thermistor (inlet air temp.detection)	SWE(L.B.)	Connector (emergency operation)
X01	Aux. relay	TH22	Thermistor (piping temp.detection/water in)	LED1	LED(Power supply)
X10	Aux. relay	TH23	Thermistor (piping temp.detection/water out)	LED2	LED(Remote controller supply)
ACL	AC reactor(Power factor improvement)	SW1(L.B.)	Switch (for mode selection)		
CN27	Connector (Damper)	SW2(L.B.)	Switch (for capacity code)		
CN32	Connector (Remote switch)	SW3(L.B.)	Switch (for mode selection)		

5-1. Sound levels

5-1-1. Sound levels (Measured condition: With 1m air inlet duct and 2m air outlet duct)

PEFY-WP-VMA-E



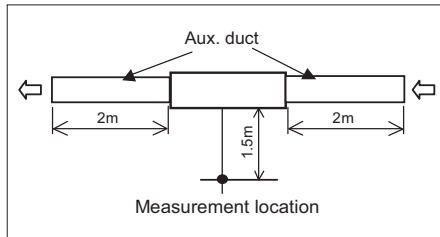
\* Measured in anechoic room.

Sound level at anechoic room : Low-Mid-High

Model	Sound level dB(A)				
	35Pa	50Pa	70Pa	100Pa	150Pa
PEFY-WP20VMA-E	28-30-34	28-30-34	29-32-36	29-33-37	31-35-40
PEFY-WP25VMA-E	28-30-34	28-30-34	29-32-36	29-33-37	32-36-40
PEFY-WP32VMA-E	28-31-35	28-32-35	29-33-37	30-34-38	32-37-41
PEFY-WP40VMA-E	30-33-37	30-34-38	31-36-39	33-37-41	36-41-44
PEFY-WP50VMA-E	30-33-37	30-34-38	31-36-39	33-37-41	36-41-44
PEFY-WP63VMA-E	30-33-37	30-34-38	31-36-39	33-37-41	36-41-44
PEFY-WP71VMA-E	31-36-40	32-37-41	33-38-42	35-39-43	37-42-45
PEFY-WP80VMA-E	31-36-40	32-37-41	33-38-42	35-39-43	37-42-45
PEFY-WP100VMA-E	31-36-40	32-37-41	33-38-42	35-39-43	37-42-45
PEFY-WP125VMA-E	36-41-45	36-41-45	38-42-46	39-43-47	40-45-48

5-1-2. Sound levels (Measured condition: With 2m air inlet duct and 2m air outlet duct)

PEFY-WP-VMA-E



\* Measured in anechoic room.

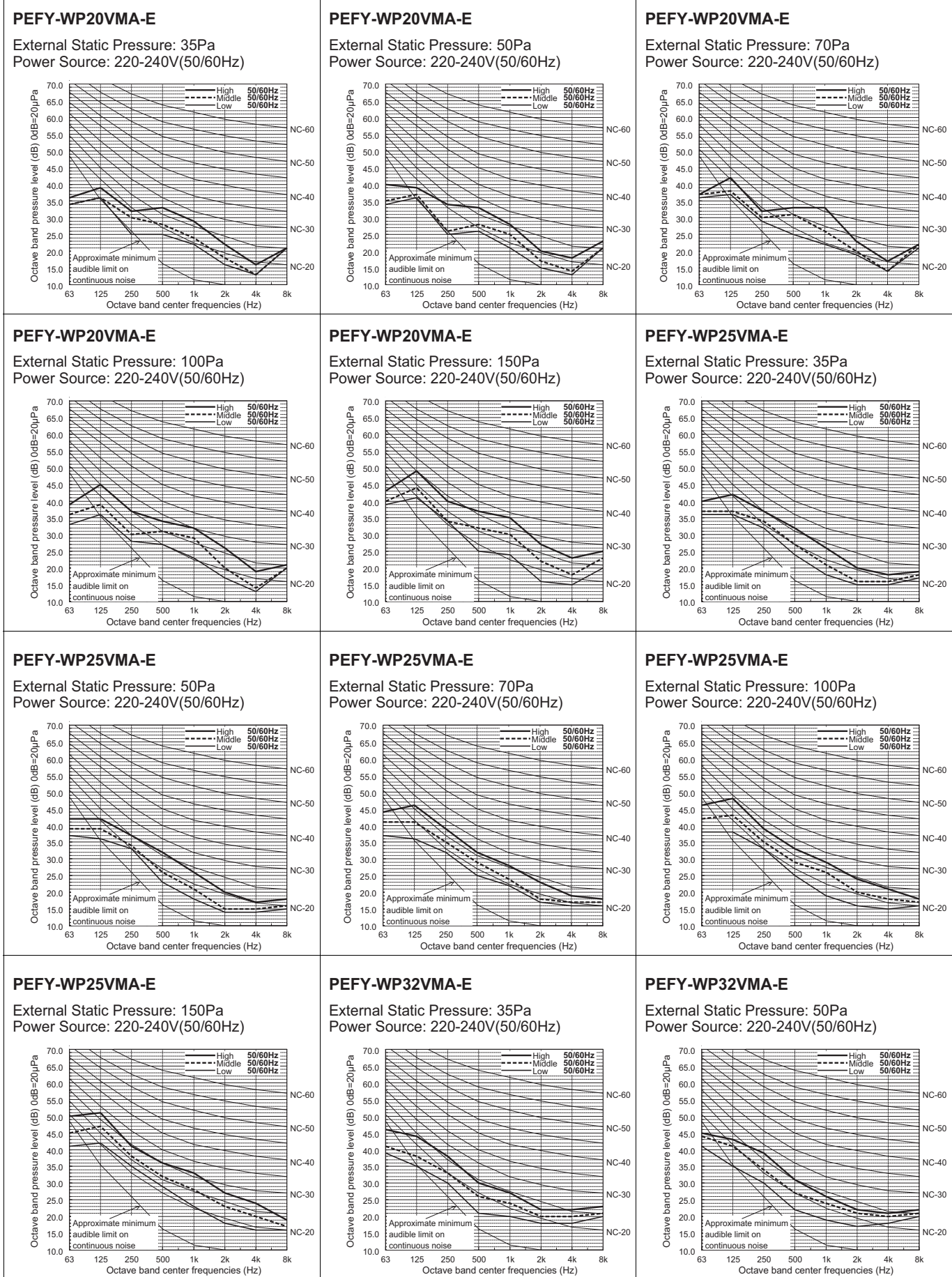
Sound level at anechoic room : Low-Mid-High

Model	Sound level dB(A)				
	35Pa	50Pa	70Pa	100Pa	150Pa
PEFY-WP20VMA-E	23-25-28	23-26-29	24-27-30	25-28-32	28-32-36
PEFY-WP25VMA-E	23-26-29	23-27-30	24-28-31	26-29-33	29-33-37
PEFY-WP32VMA-E	24-28-31	25-29-32	26-30-33	27-31-34	29-34-38
PEFY-WP40VMA-E	26-29-33	26-29-34	26-30-35	29-33-37	32-37-41
PEFY-WP50VMA-E	26-29-33	26-29-34	26-30-35	29-33-37	32-37-41
PEFY-WP63VMA-E	26-29-33	26-29-34	26-30-35	29-33-37	32-37-41
PEFY-WP71VMA-E	28-32-36	28-33-37	30-35-39	31-36-40	33-38-43
PEFY-WP80VMA-E	28-32-36	28-33-37	30-35-39	31-36-40	33-38-43
PEFY-WP100VMA-E	28-32-36	28-33-37	30-35-39	31-36-40	33-38-43
PEFY-WP125VMA-E	31-35-40	33-37-42	34-38-43	35-38-44	37-41-45

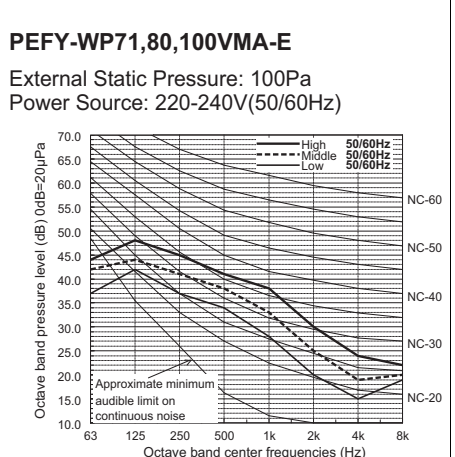
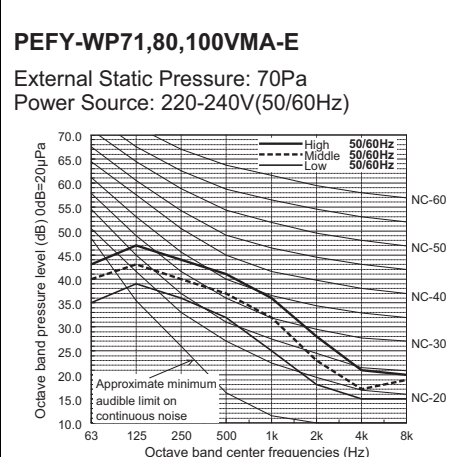
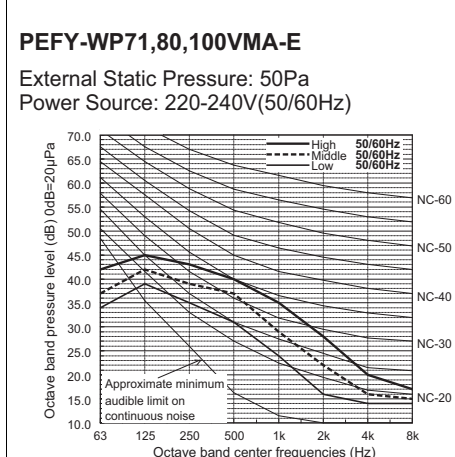
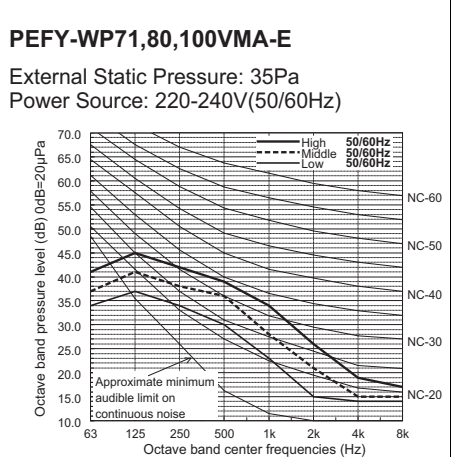
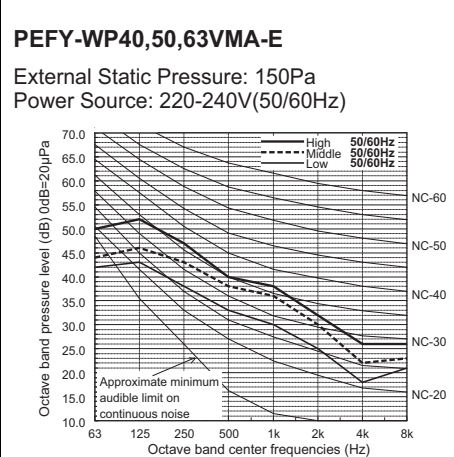
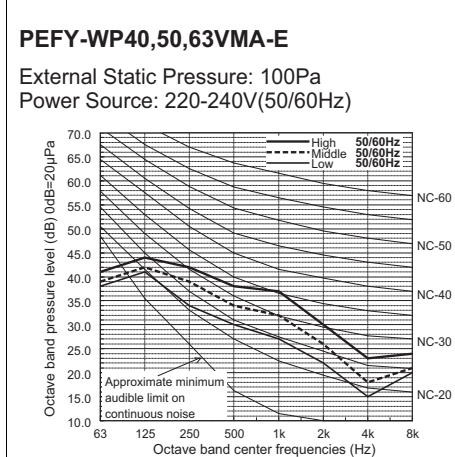
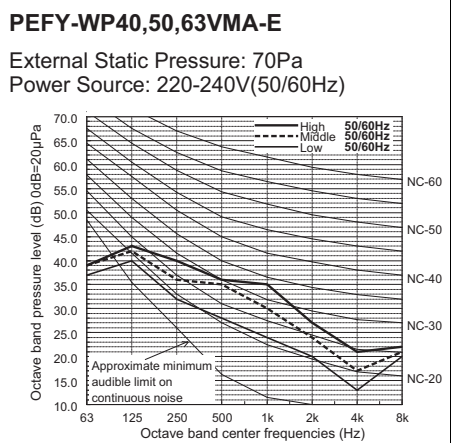
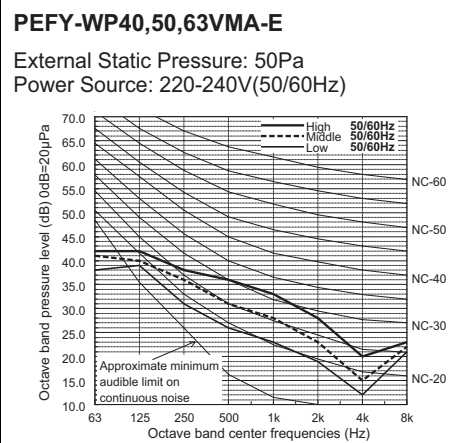
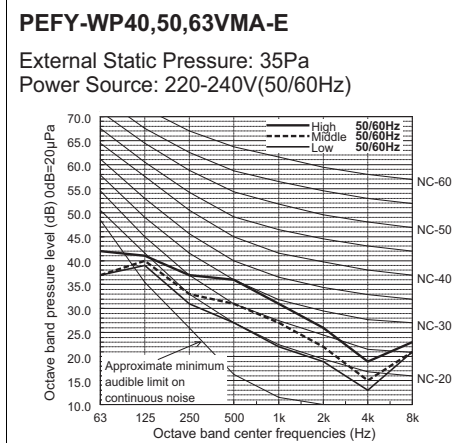
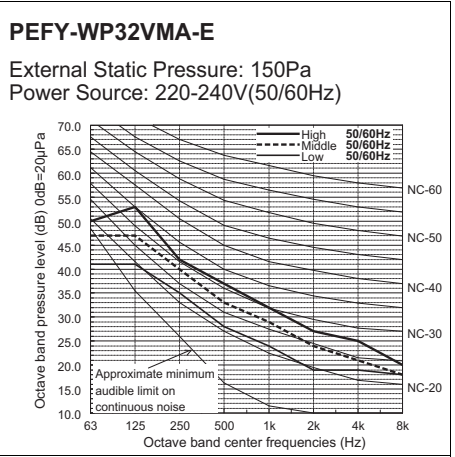
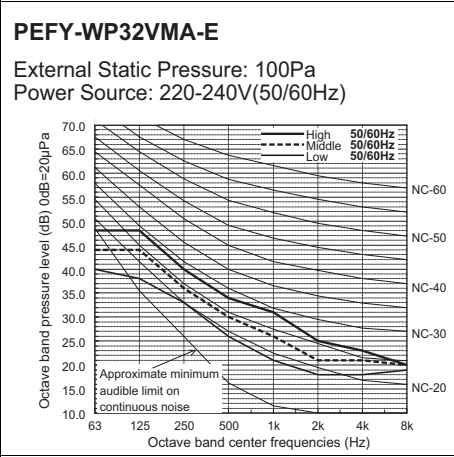
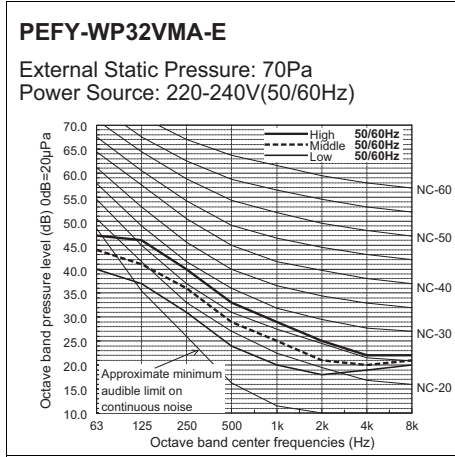
5-2. NC curves

5-2-1. NC curves (Sound level measured condition: With 1m air inlet duct and 2m air outlet duct)

PEFY-WP-VMA-E



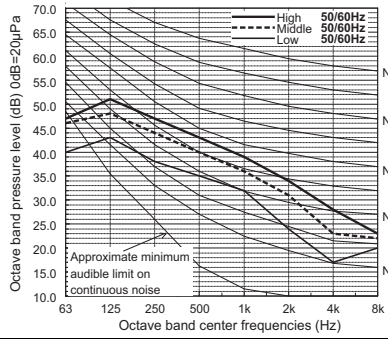




PEFY-WP-VMA-E

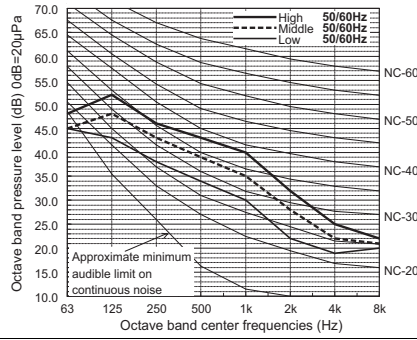
**PEFY-WP71,80,100VMA-E**

External Static Pressure: 150Pa  
Power Source: 220-240V(50/60Hz)



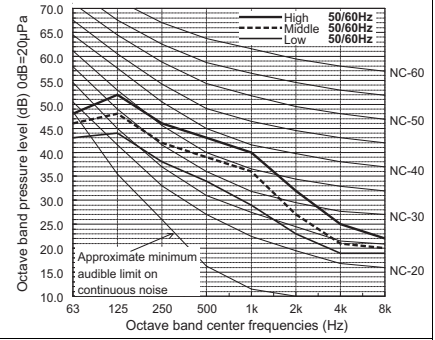
**PEFY-WP125VMA-E**

External Static Pressure: 35Pa  
Power Source: 220-240V(50/60Hz)



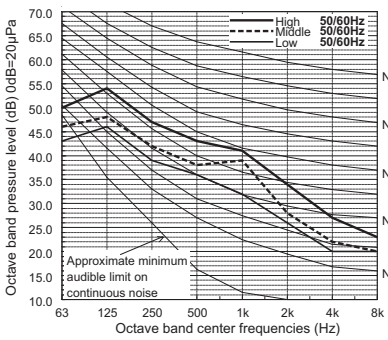
**PEFY-WP125VMA-E**

External Static Pressure: 50Pa  
Power Source: 220-240V(50/60Hz)



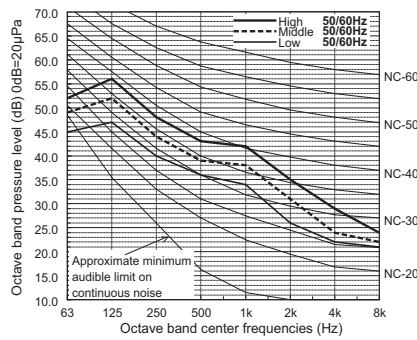
**PEFY-WP125VMA-E**

External Static Pressure: 70Pa  
Power Source: 220-240V(50/60Hz)



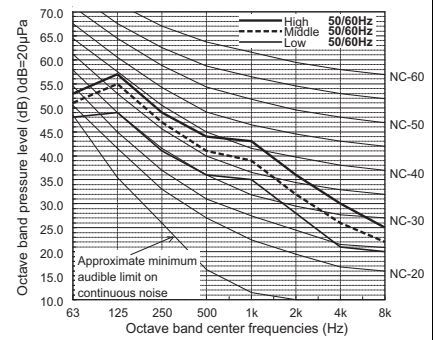
**PEFY-WP125VMA-E**

External Static Pressure: 100Pa  
Power Source: 220-240V(50/60Hz)

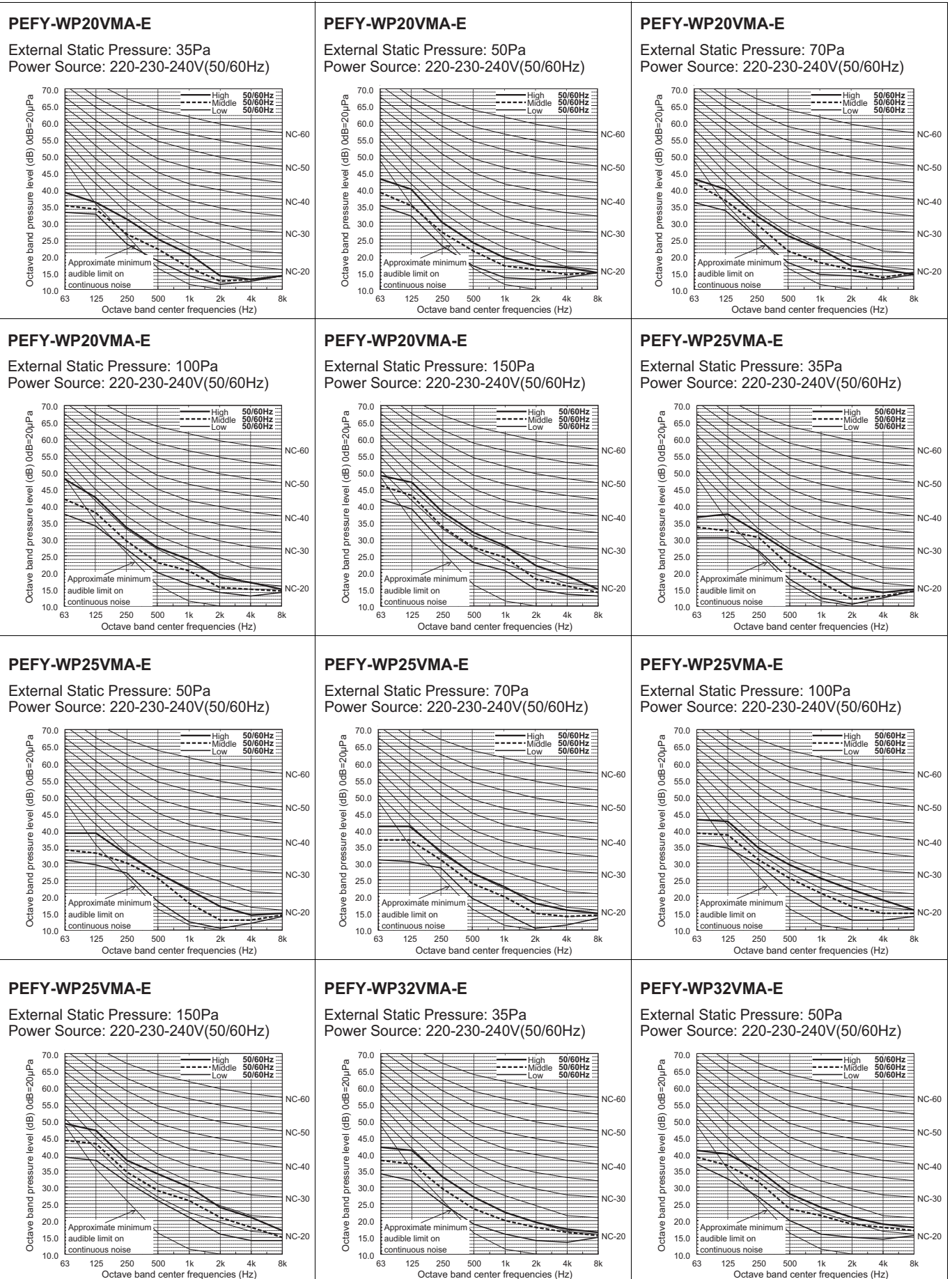


**PEFY-WP125VMA-E**

External Static Pressure: 150Pa  
Power Source: 220-240V(50/60Hz)



5-2-2. NC curves (Sound level measured condition: With 2m air inlet duct and 2m air outlet duct)

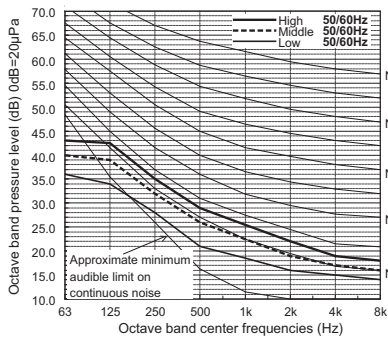




PEFY-WP-VMA-E

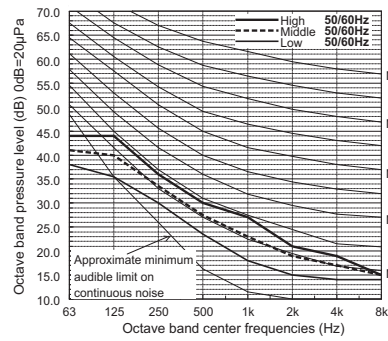
**PEFY-WP32VMA-E**

External Static Pressure: 70Pa  
Power Source: 220-230-240V(50/60Hz)



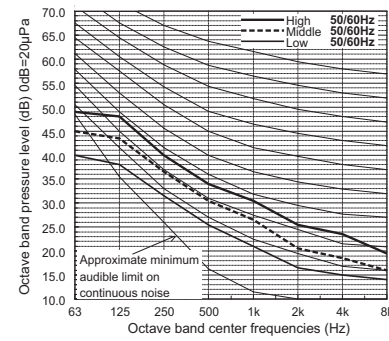
**PEFY-WP32VMA-E**

External Static Pressure: 100Pa  
Power Source: 220-230-240V(50/60Hz)



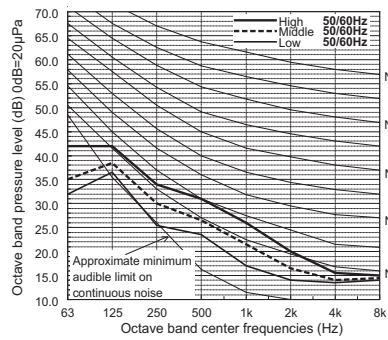
**PEFY-WP32VMA-E**

External Static Pressure: 150Pa  
Power Source: 220-230-240V(50/60Hz)



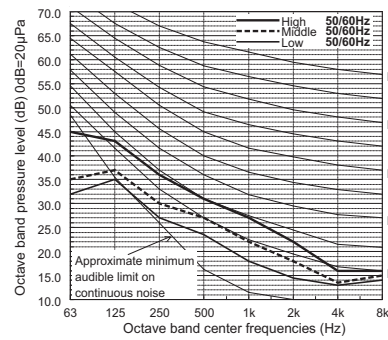
**PEFY-WP40, 50, 63VMA-E**

External Static Pressure: 35Pa  
Power Source: 220-230-240V(50/60Hz)



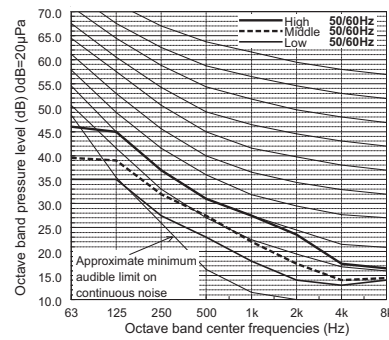
**PEFY-WP40, 50, 63VMA-E**

External Static Pressure: 50Pa  
Power Source: 220-230-240V(50/60Hz)



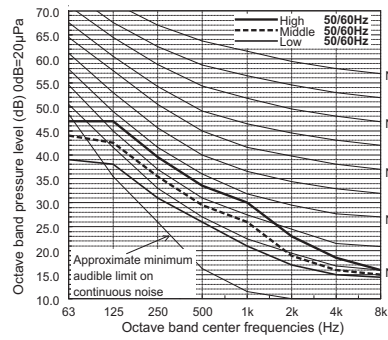
**PEFY-WP40, 50, 63VMA-E**

External Static Pressure: 70Pa  
Power Source: 220-230-240V(50/60Hz)



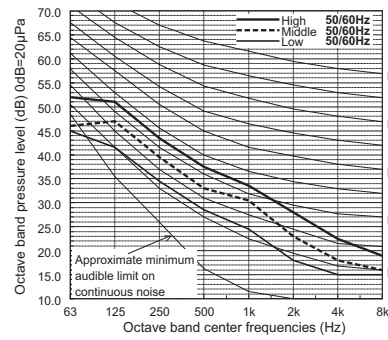
**PEFY-WP40, 50, 63VMA-E**

External Static Pressure: 100Pa  
Power Source: 220-230-240V(50/60Hz)



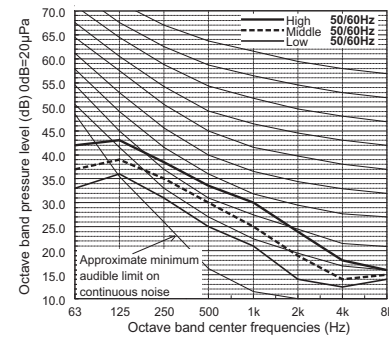
**PEFY-WP40, 50, 63VMA-E**

External Static Pressure: 150Pa  
Power Source: 220-230-240V(50/60Hz)



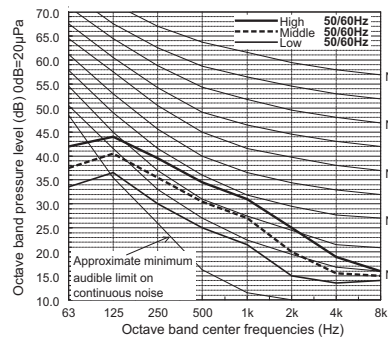
**PEFY-WP71, 80, 100VMA-E**

External Static Pressure: 35Pa  
Power Source: 220-230-240V(50/60Hz)



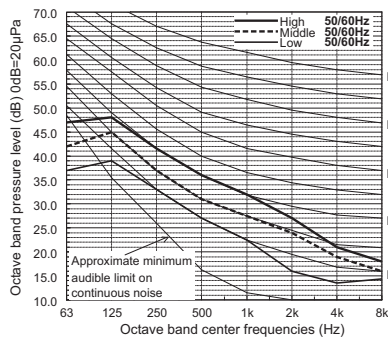
**PEFY-WP71, 80, 100VMA-E**

External Static Pressure: 50Pa  
Power Source: 220-230-240V(50/60Hz)



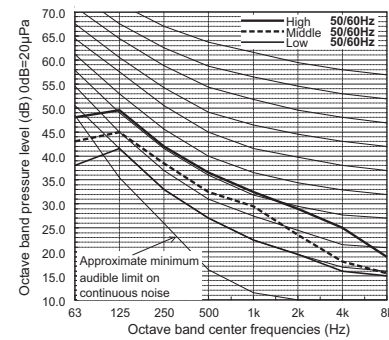
**PEFY-WP71, 80, 100VMA-E**

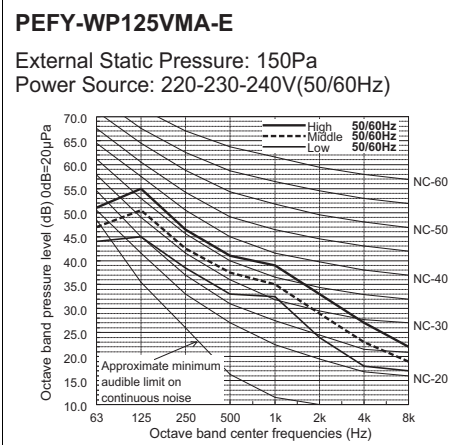
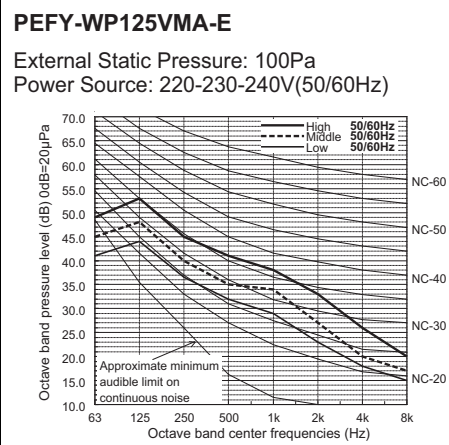
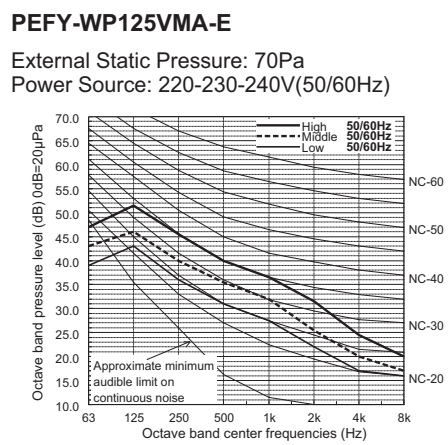
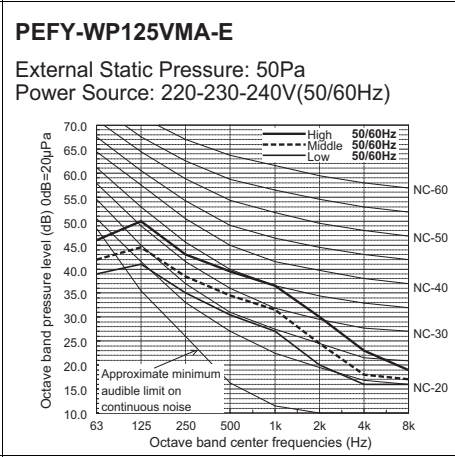
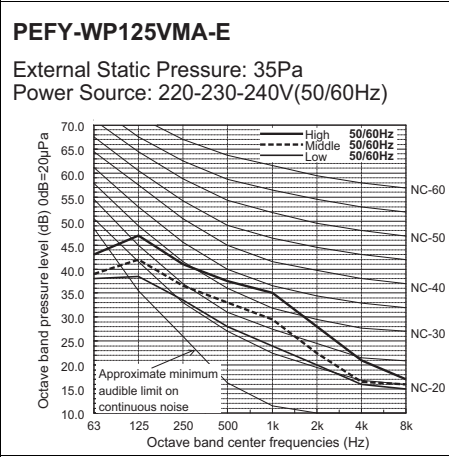
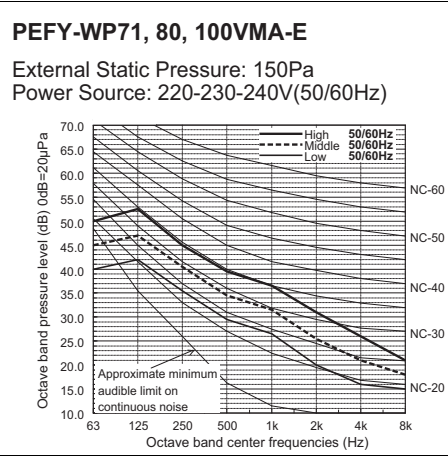
External Static Pressure: 70Pa  
Power Source: 220-230-240V(50/60Hz)



**PEFY-WP71, 80, 100VMA-E**

External Static Pressure: 100Pa  
Power Source: 220-230-240V(50/60Hz)





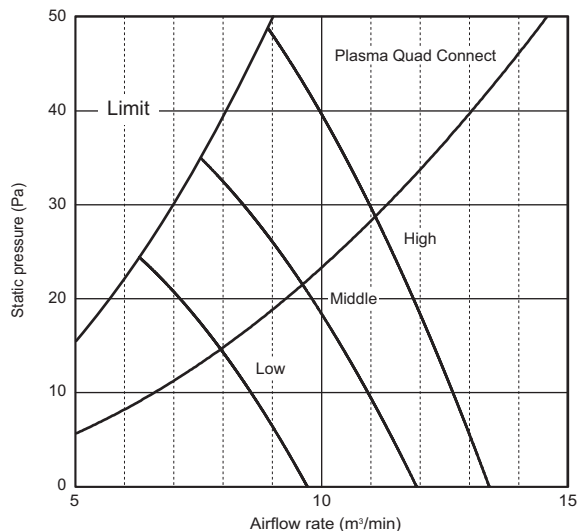
## 6. FAN CHARACTERISTICS CURVES

Ceiling concealed (Medium static pressure type)

PEFY-WP-VMA-E

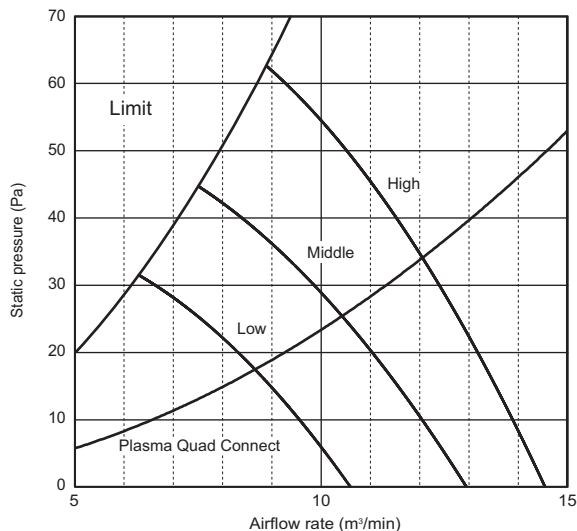
### PEFY-WP20VMA-E

External static pressure : 35Pa  
Power source : 220-240V



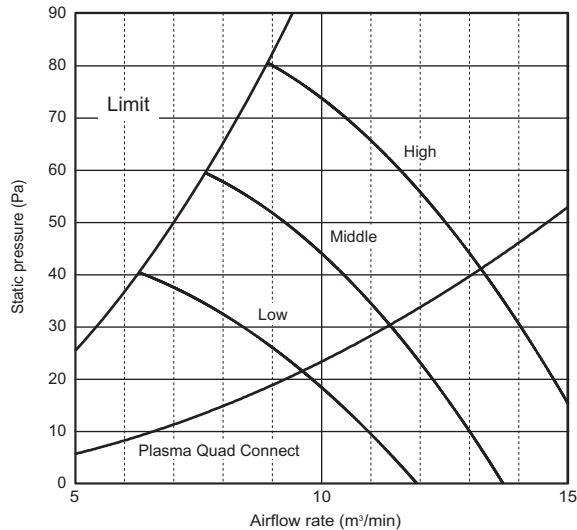
### PEFY-WP20VMA-E

External static pressure : 50Pa  
Power source : 220-240V



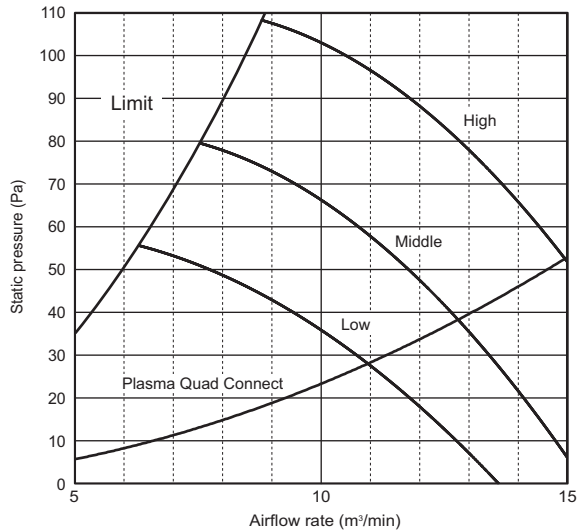
### PEFY-WP20VMA-E

External static pressure : 70Pa  
Power source : 220-240V



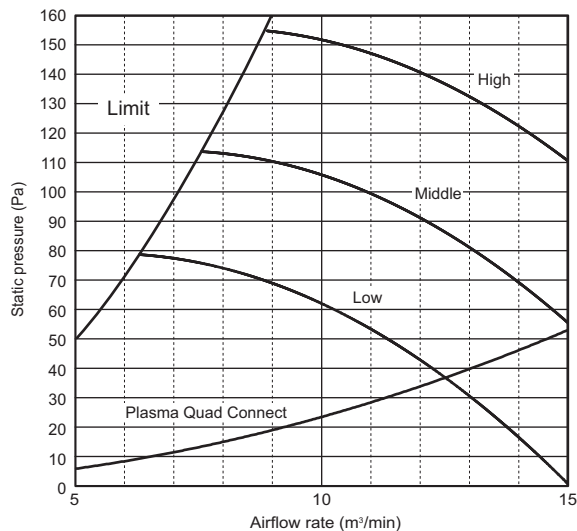
### PEFY-WP20VMA-E

External static pressure : 100Pa  
Power source : 220-240V



### PEFY-WP20VMA-E

External static pressure : 150Pa  
Power source : 220-240V

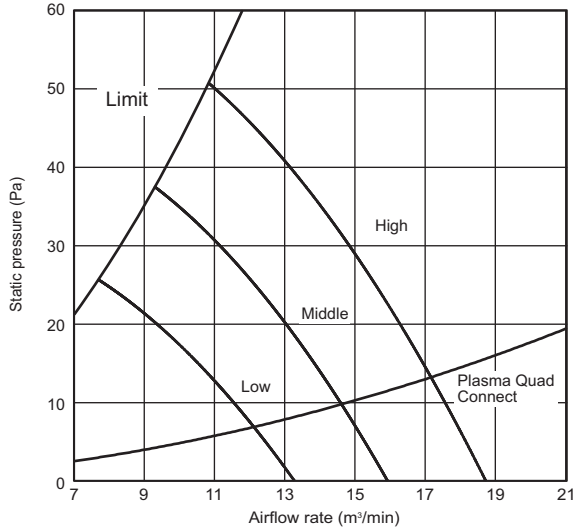


# 6. FAN CHARACTERISTICS CURVES

Ceiling concealed (Medium static pressure type)

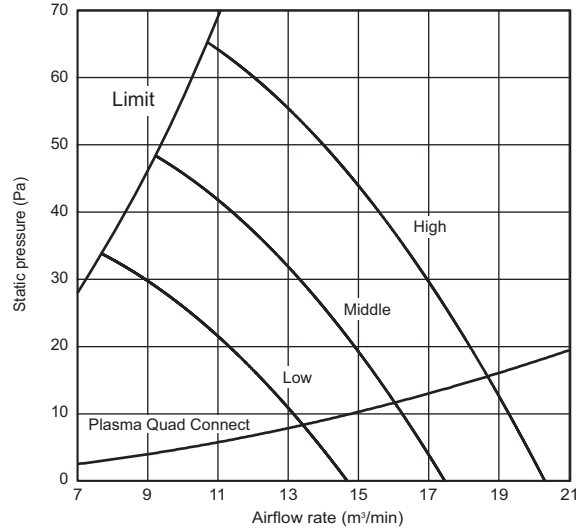
## PEFY-WP25VMA-E

External static pressure : 35Pa  
Power source : 220-240V



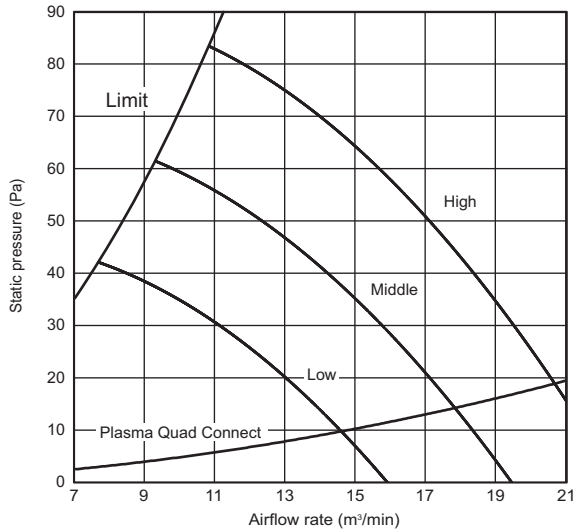
## PEFY-WP25VMA-E

External static pressure : 50Pa  
Power source : 220-240V



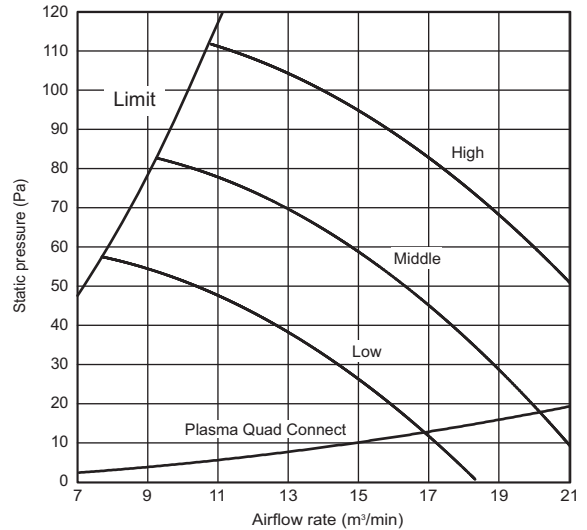
## PEFY-WP25VMA-E

External static pressure : 70Pa  
Power source : 220-240V



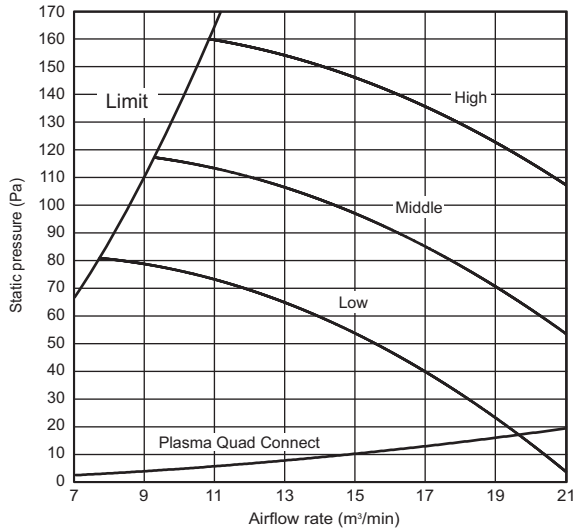
## PEFY-WP25VMA-E

External static pressure : 100Pa  
Power source : 220-240V



## PEFY-WP25VMA-E

External static pressure : 150Pa  
Power source : 220-240V



## 6. FAN CHARACTERISTICS CURVES

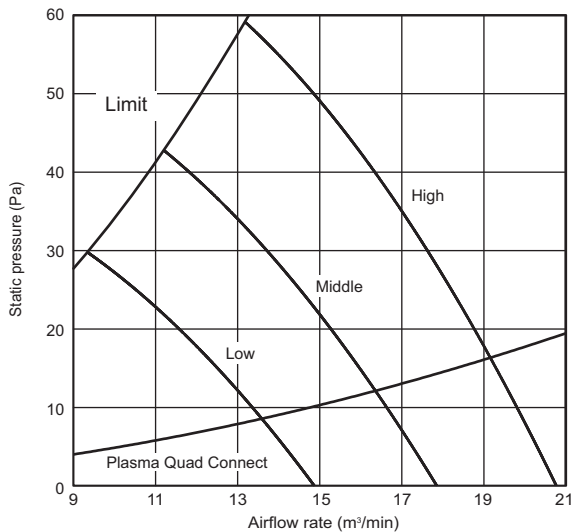
Ceiling concealed (Medium static pressure type)

PEFY-WP32VMA-E

### PEFY-WP32VMA-E

External static pressure : 35Pa

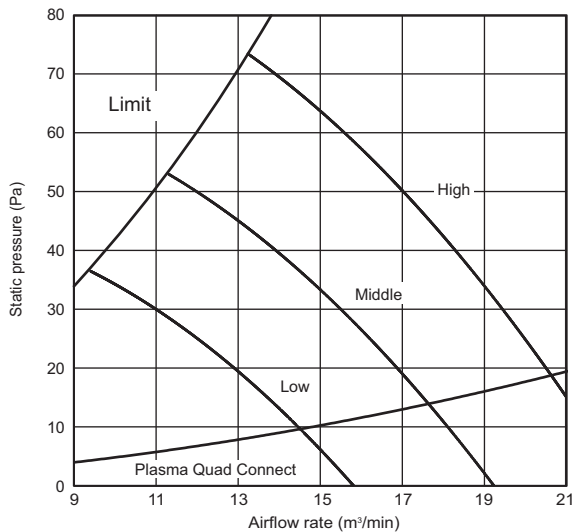
Power source : 220-240V



### PEFY-WP32VMA-E

External static pressure : 50Pa

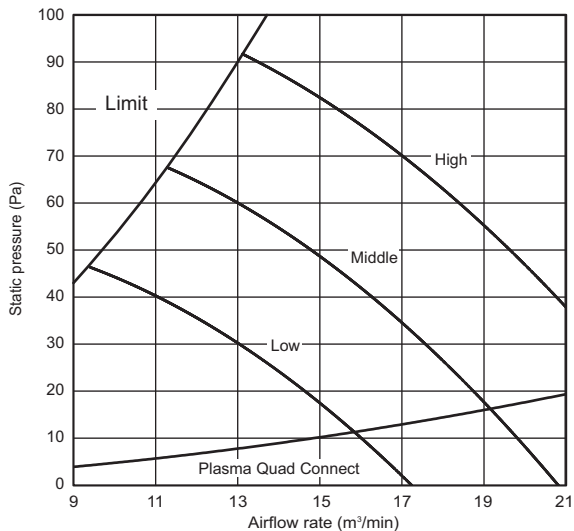
Power source : 220-240V



### PEFY-WP32VMA-E

External static pressure : 70Pa

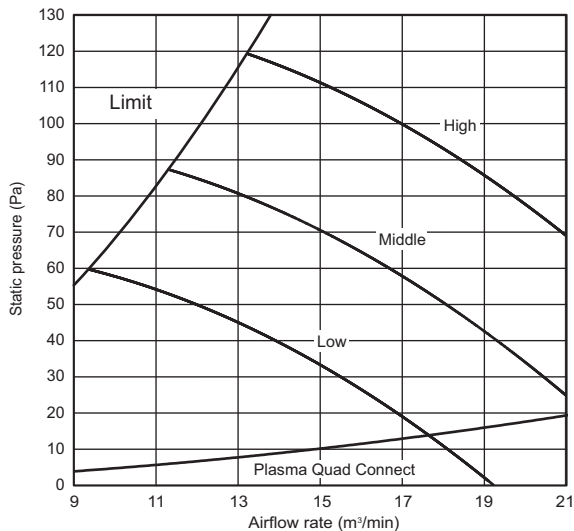
Power source : 220-240V



### PEFY-WP32VMA-E

External static pressure : 100Pa

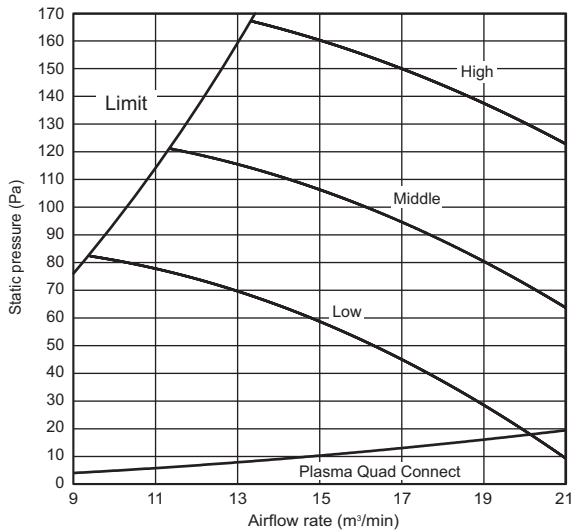
Power source : 220-240V



### PEFY-WP32VMA-E

External static pressure : 150Pa

Power source : 220-240V



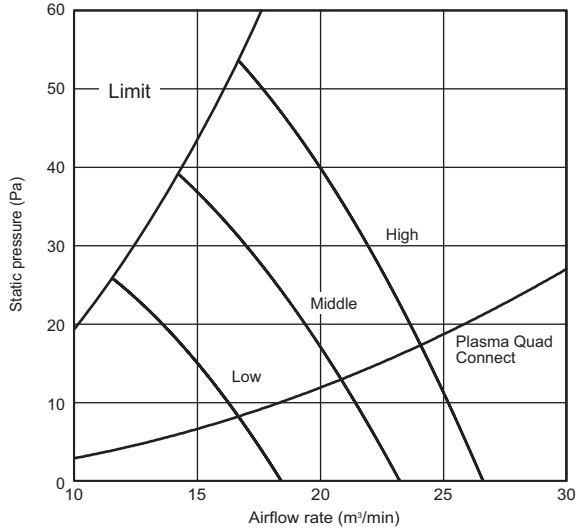


# 6. FAN CHARACTERISTICS CURVES

Ceiling concealed (Medium static pressure type)

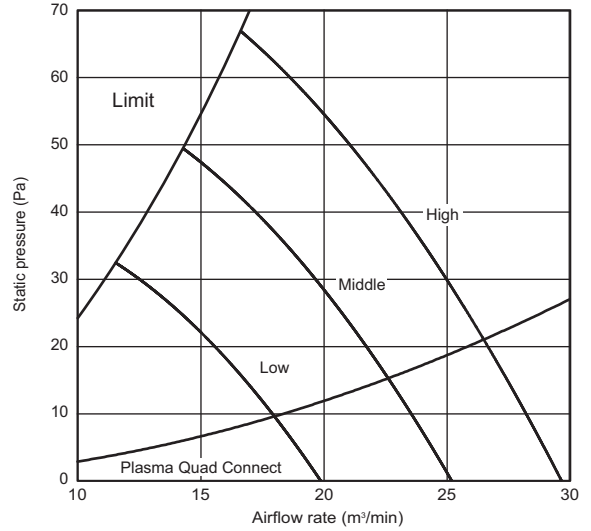
## PEFY-WP40, 50, 63VMA-E

External static pressure : 35Pa  
Power source : 220-240V



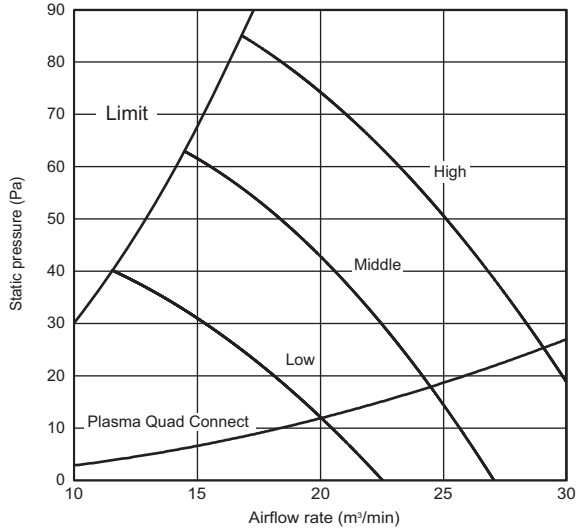
## PEFY-WP40, 50, 63VMA-E

External static pressure : 50Pa  
Power source : 220-240V



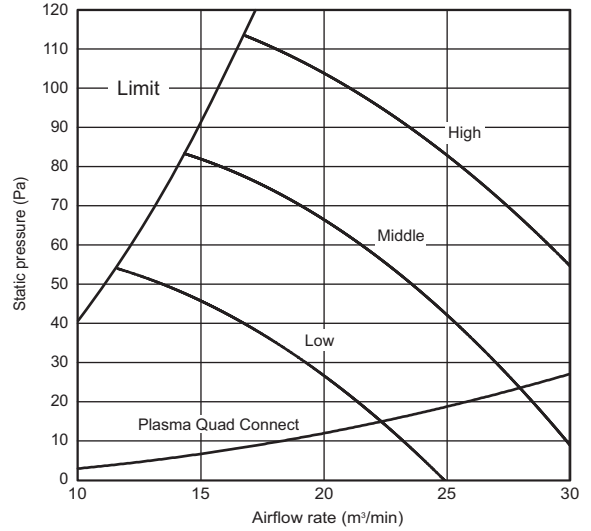
## PEFY-WP40, 50, 63VMA-E

External static pressure : 70Pa  
Power source : 220-240V



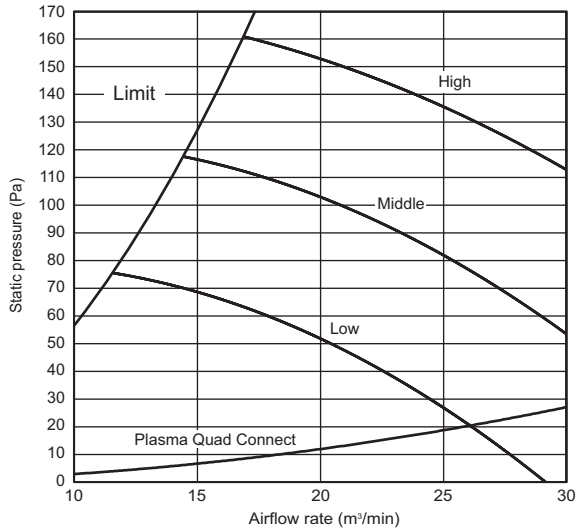
## PEFY-WP40, 50, 63VMA-E

External static pressure : 100Pa  
Power source : 220-240V



## PEFY-WP40, 50, 63VMA-E

External static pressure : 150Pa  
Power source : 220-240V



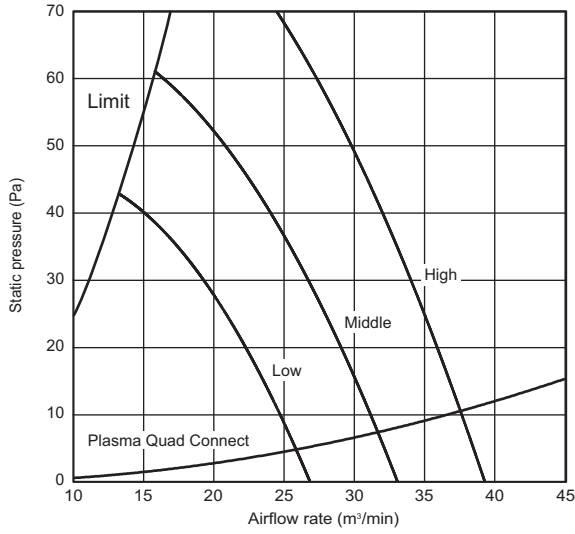
## 6. FAN CHARACTERISTICS CURVES

Ceiling concealed (Medium static pressure type)

PEFY-WP-VMA-E

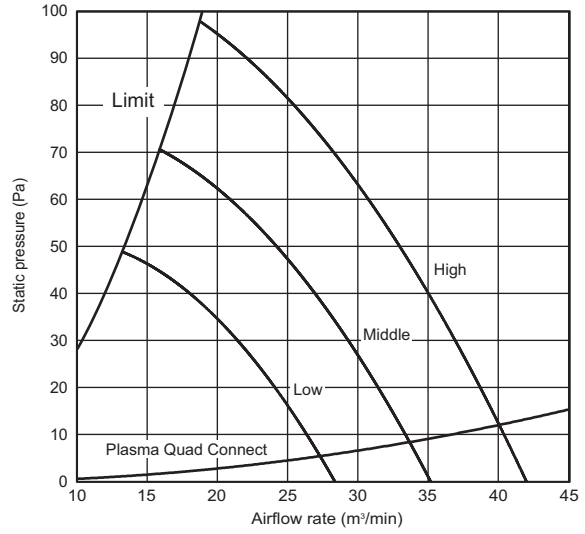
### PEFY-WP71, 80, 100VMA-E

External static pressure : 35Pa  
Power source : 220-240V



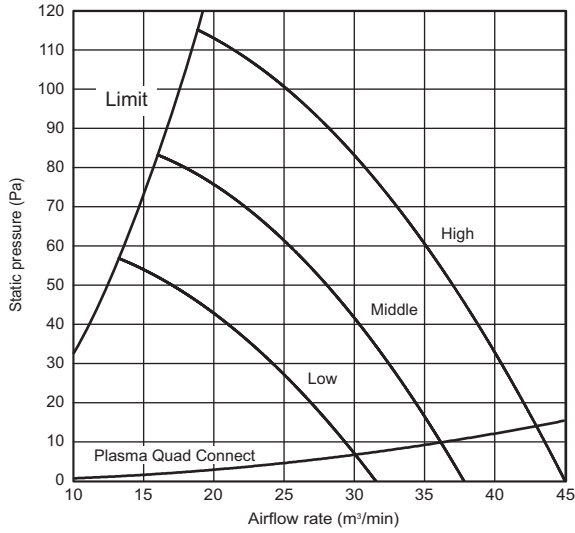
### PEFY-WP71, 80, 100VMA-E

External static pressure : 50Pa  
Power source : 220-240V



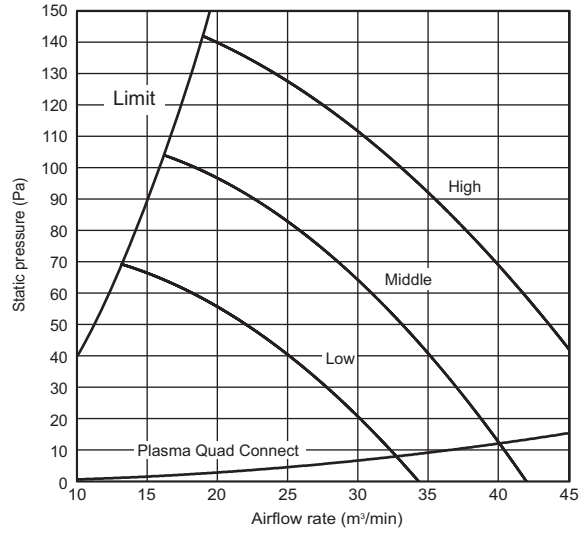
### PEFY-WP71, 80, 100VMA-E

External static pressure : 70Pa  
Power source : 220-240V



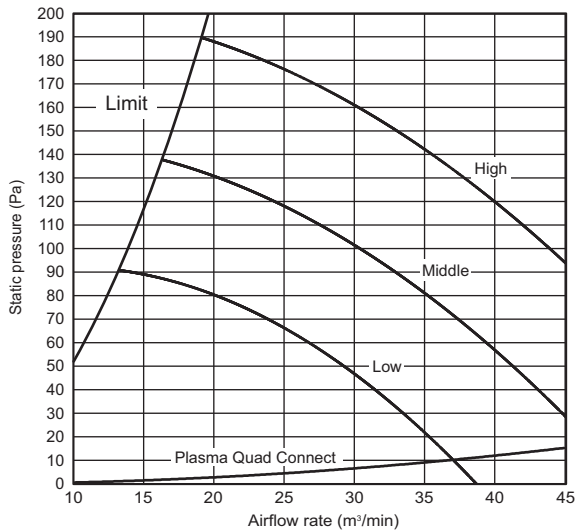
### PEFY-WP71, 80, 100VMA-E

External static pressure : 100Pa  
Power source : 220-240V



### PEFY-WP71, 80, 100VMA-E

External static pressure : 150Pa  
Power source : 220-240V



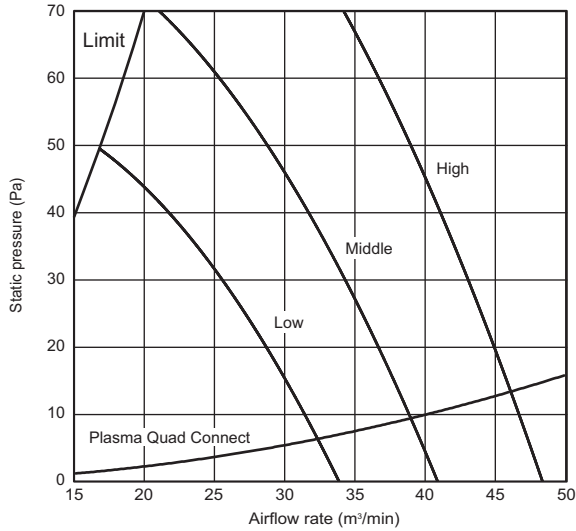
## 6. FAN CHARACTERISTICS CURVES

Ceiling concealed (Medium static pressure type)

PEFY-WP-VMA-E

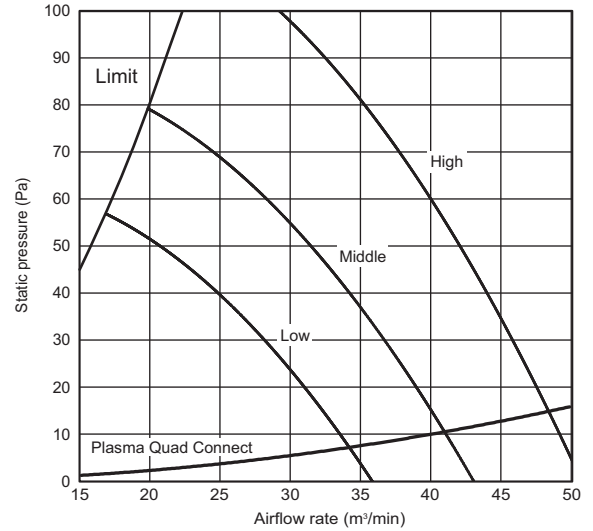
### PEFY-WP125VMA-E

External static pressure : 35Pa  
Power source : 220-240V



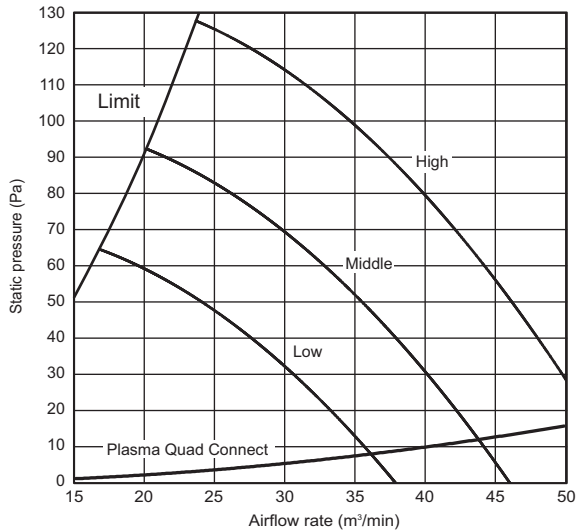
### PEFY-WP125VMA-E

External static pressure : 50Pa  
Power source : 220-240V



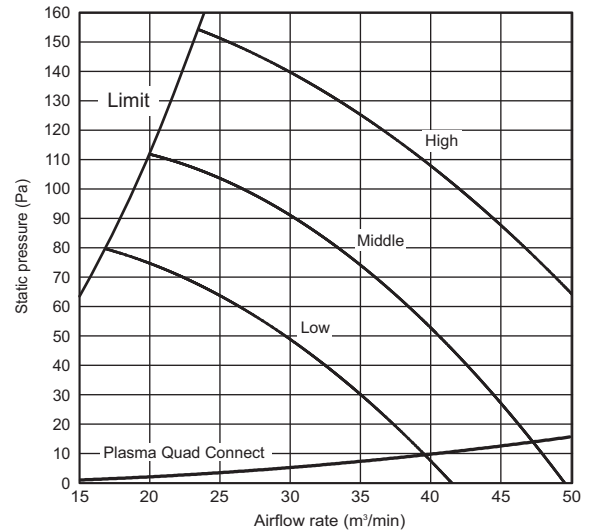
### PEFY-WP125VMA-E

External static pressure : 70Pa  
Power source : 220-240V



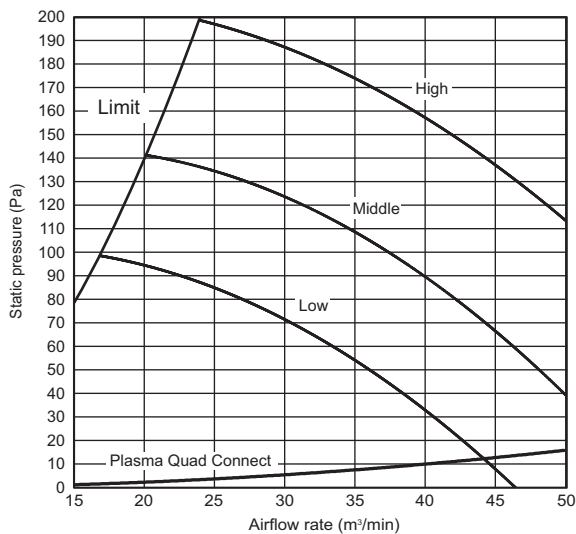
### PEFY-WP125VMA-E

External static pressure : 100Pa  
Power source : 220-240V



### PEFY-WP125VMA-E

External static pressure : 150Pa  
Power source : 220-240V





## 7. ELECTRICAL CHARACTERISTICS

Ceiling concealed (Medium static pressure type)

Symbols: MCA: Max.Circuit Amps (=1.25xFLA) FLA: Full Load Amps

IFM: Indoor Fan Motor Output: Fan motor rated output

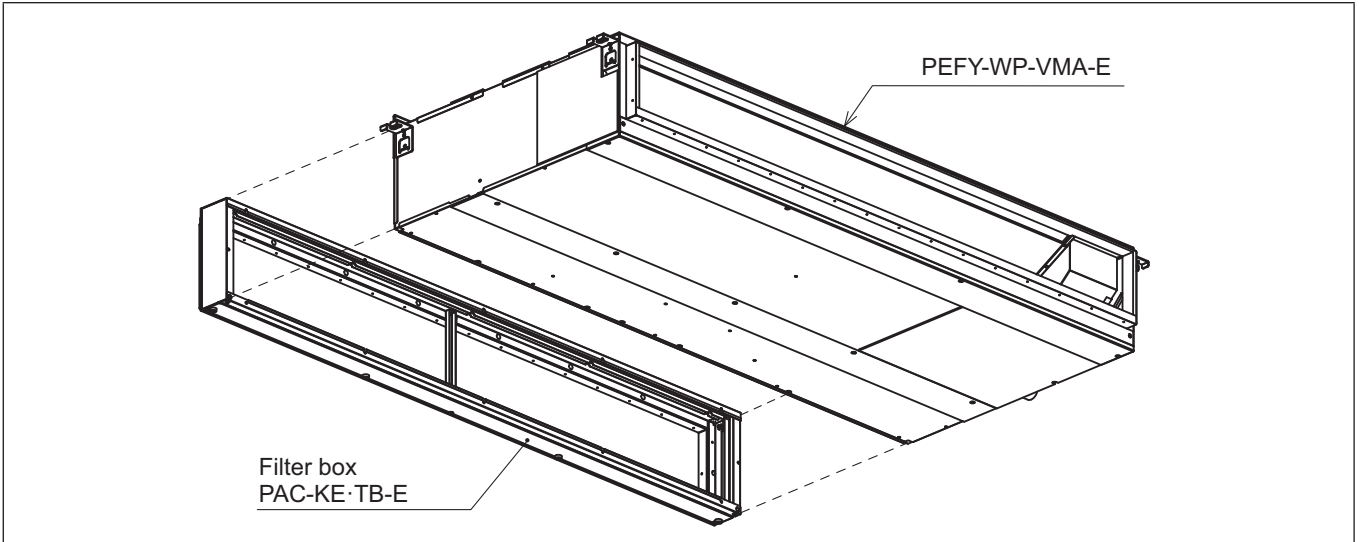
PEFY-WP-VMA-E	Power supply			IFM	
	Volts/Hz	Range +-10%	MCA(A)	Output (kW)	FLA(A)
PEFY-WP20VMA-E	220-240V/50Hz 220-240V/60Hz	Max.: 264V Min.: 198V	1.18	0.085	0.95
PEFY-WP25VMA-E			1.43	0.085	1.14
PEFY-WP32VMA-E			1.54	0.085	1.23
PEFY-WP40VMA-E			2.47	0.121	1.98
PEFY-WP50VMA-E			2.47	0.121	1.98
PEFY-WP63VMA-E			2.47	0.121	1.98
PEFY-WP71VMA-E			3.30	0.244	2.64
PEFY-WP80VMA-E			3.30	0.244	2.64
PEFY-WP100VMA-E			3.30	0.244	2.64
PEFY-WP125VMA-E			3.29	0.244	2.63

PEFY-WP-VMA-E

8-1. Optional parts line up for the Indoor unit


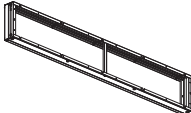
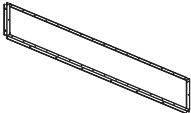
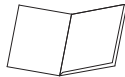
	Filter box	Plasma Quad Connect	PQ attachment (Rear inlet)	PQ attachment (Bottom inlet)	PQ box
PEFY-WP20VMA-E	PAC-KE91TB-E	MAC-100FT-E	PAC-HA31PAR	PAC-HA31PAU	PAC-KE91PTB-E
PEFY-WP25, 32VMA-E	PAC-KE92TB-E	MAC-100FT-E	PAC-HA31PAR	PAC-HA31PAU	PAC-KE92PTB-E
PEFY-WP40, 50, 63VMA-E	PAC-KE93TB-E	MAC-100FT-E	PAC-HA31PAR	PAC-HA31PAU	PAC-KE93PTB-E
PEFY-WP71, 80, 100VMA-E	PAC-KE94TB-E	MAC-100FT-E	PAC-HA31PAR	PAC-HA31PAU	PAC-KE94PTB-E
PEFY-WP125VMA-E	PAC-KE95TB-E	MAC-100FT-E	PAC-HA31PAR	PAC-HA31PAU	PAC-KE95PTB-E

● PEFY-WP-VMA-E



8-2. Filter box

PAC-KE-TB-E

Item	1 Screw	2 Filter box	3 FLANGE	4 Installation manual	
Quantity	30	1	1	1	
Shape					

Detailed installation information should be referred to its Installation Manual.

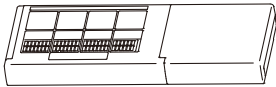
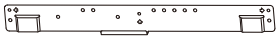
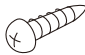
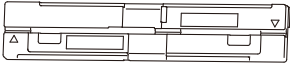

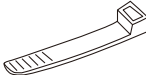
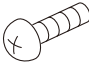
8-3. Plasma Quad Connect

Static pressure loss is referred to 6 "FAN CHARACTERISTICS CURVES".

Plasma Quad Connect (MAC-100FT-E) should be used together with PQ box or PQ attachment (PAC-HA31PAR or PAC-HA31PAU).

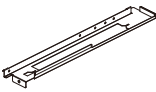
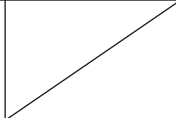
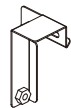
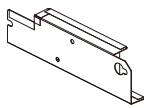

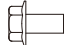
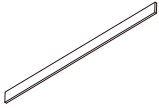
\*Attaching the Plasma Quad Connect increases the pressure loss. Adjust the external static pressure setting as necessary. For the adjustment procedure, see the Installation Manual for the indoor unit.

Plasma Quad Connect (MAC-100FT-E)

Item	Plasma Quad Connect (with connecting cable)	Installation plate	Fixing screw for Plasma Quad Connect and Installation plate 4 × 25 mm
Quantity	1	1	5
Shape			
Item	Spacer Note: The spacer is used as packaging material.	Mounting cord clamp	Cable tie
Quantity	1	1	1
Shape			
Item	Screw for Mounting cord clamp 4 × 16 (Use when joining room air conditioner parts)		
Quantity	1		
Shape			

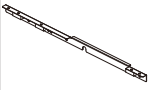
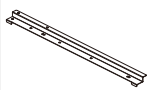
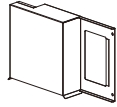
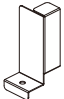


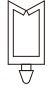

Detailed installation information should be referred to its Installation Manual.

PQ attachment (Rear inlet) (PAC-HA31PAR)

Item	PLATE 1	PLATE 2	PLATE 3	PLATE 4	Screw (4 × 10)	Screw (5 × 10)	RUBBER PLATE
Quantity	1	-	1	1	3	2	2
Shape							




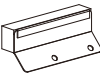

Detailed installation information should be referred to its Installation Manual.

PQ attachment (Bottom inlet) (PAC-HA31PAU)

Item	PLATE 1	PLATE 2	PLATE 3	PLATE 4	Screw (4 × 10)	CABLE STRAP	WIRE SADDLE	RUBBER PLATE
Quantity	1	1	1	1	9	1	1	2
Shape								

Detailed installation information should be referred to its Installation Manual.

PQ box (PAC-KE91, 92, 93, 94, 95PTB-E)

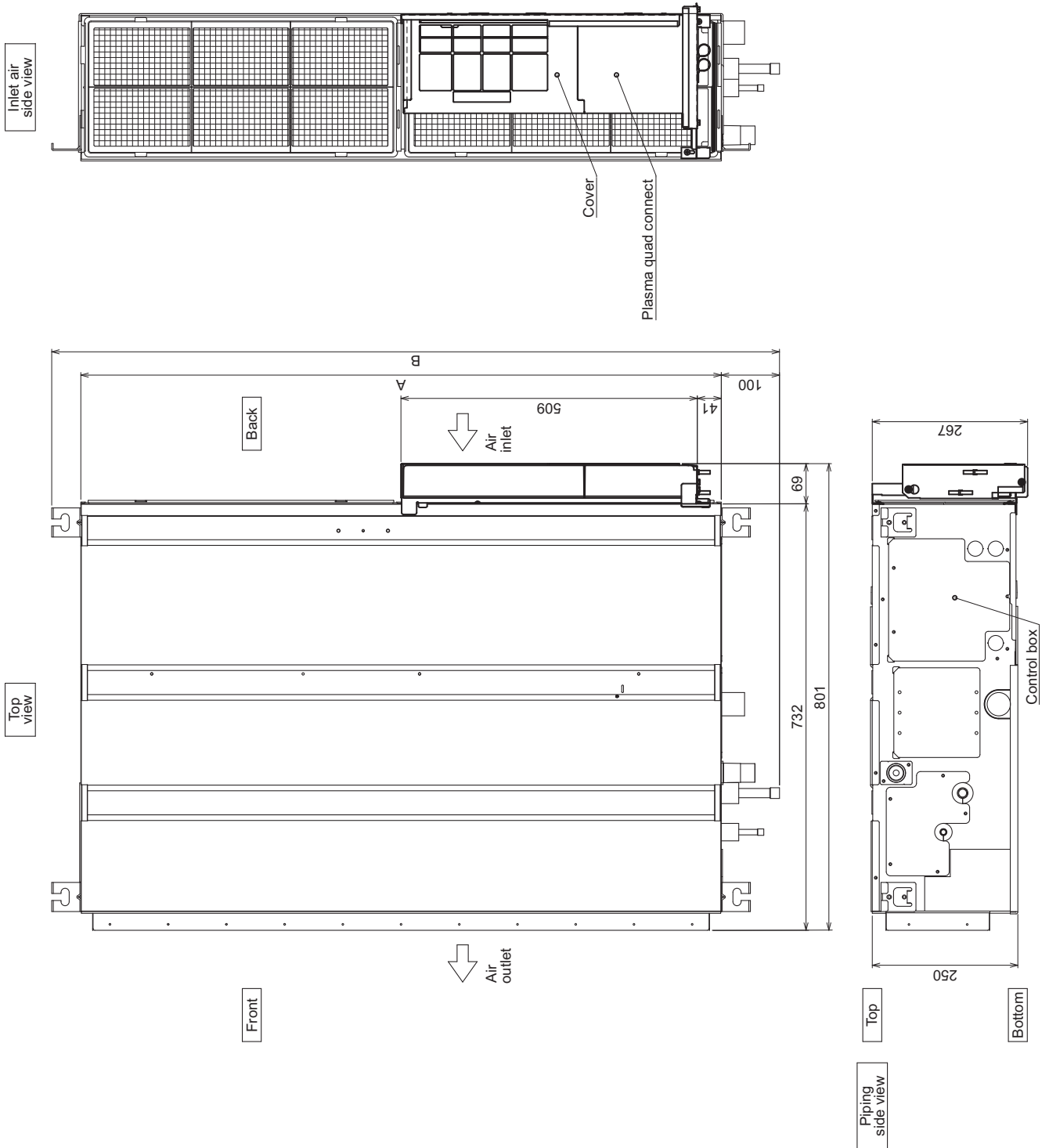
Item	Screw (4 × 10)	CABLE STRAP	SUCTION FLANGE	WIRING COVER	RUBBER PLATE
Quantity	22 (PAC-KE91PTB-E) 26 (PAC-KE92, 93PTB-E) 32 (PAC-KE94, 95PTB-E)	2	1	1	2
Shape					

Detailed installation information should be referred to its Installation Manual.

PEFY-WP20, 25, 32, 40, 50, 63, 71, 80, 100, 125VMA-E  
with PQ attachment (Rear inlet) and Plasma Quad Connect

Unit: mm

WIDE A	B
700	850
900	1050
1100	1250
1400	1550
1600	1750



Model	WIDE A	B
PEFY-WP20VMA-E	700	850
PEFY-WP25,32VMA-E	900	1050
PEFY-WP40,50,63VMA-E	1100	1250

Model	WIDE A	B
PEFY-WP71,80,100VMA-E	1400	1550
PEFY-WP125VMA-E	1600	1750

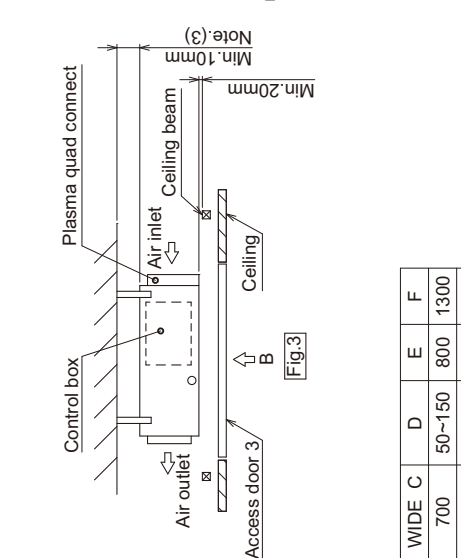
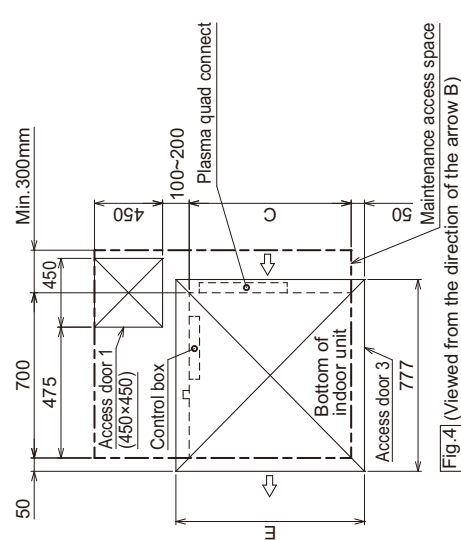
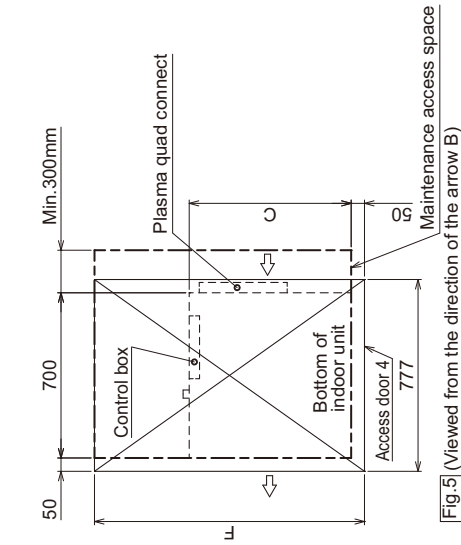
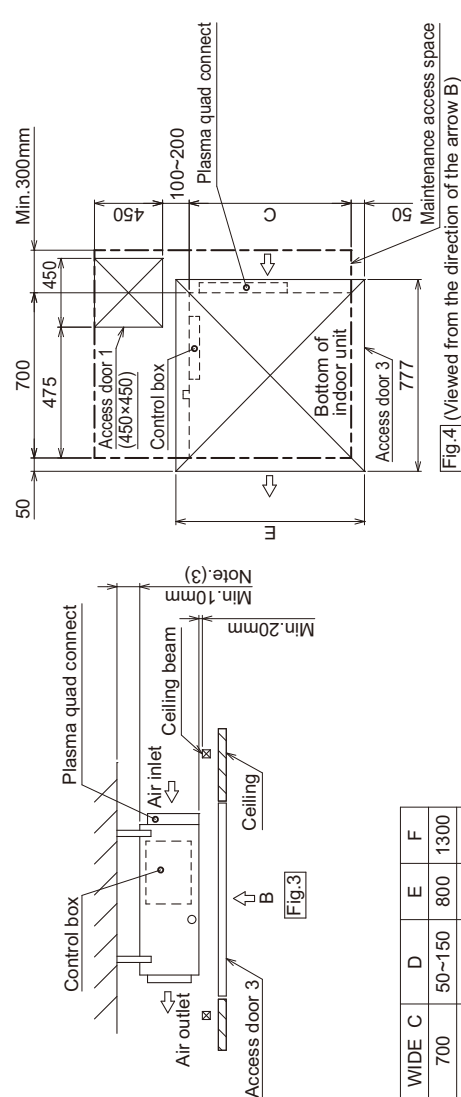
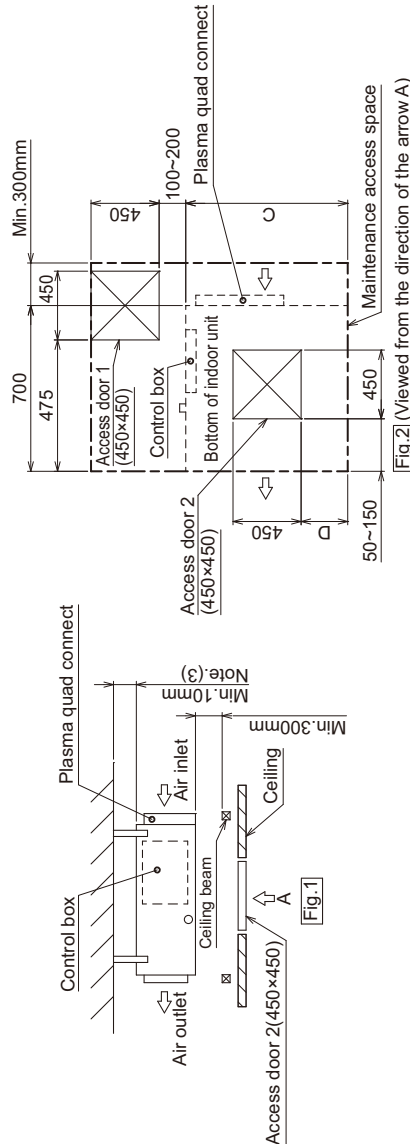
The drawing above is a sample image of the optional parts being installed on a unit.

PEFY-WP20, 25, 32, 40, 50, 63, 71, 80, 100, 125VMA-E with PQ attachment (Rear inlet) and Plasma Quad Connect

Unit: mm

[Maintenance access space]  
Secure enough access space to allow for the maintenance, inspection, and replacement of the motor, fan, drain pump, heat exchanger, and control box in one of the following ways.  
Select an installation site for the indoor unit so that its maintenance access space will not be obstructed by beams or other objects.

- (1) When a space of 300mm or more is available below the unit between the unit and the ceiling. (Fig.1)
- Create access door 1 and 2 (450x450mm each) as shown in Fig.2.
- (2) When a space is not required if enough space is available below the unit for a maintenance worker to work in.)  
(At least 20mm of space should be left below the unit as shown in Fig.3.)
- Create access door 1 diagonally below the control box and access door 3 below the unit as shown in Fig.4.
- or
- Create access door 4 below the control box and the unit as shown in Fig.5.
- (3) For maintenance if there is more than 170mm from the top surface, the cover can be pulled out without removing the PQ attachment. (Fig.1, Fig.3)



WIDE C	D	E	F
700	50~150	800	1300
900	150~250	1000	1500
1100	250~350	1200	1700
1400	400~500	1500	2000
1600	500~600	1700	2200

Model	WIDE C	D	E	F
PEFY-WP20VMA-E	700	50~150	800	1300
PEFY-WP25,32VMA-E	900	150~250	1000	1500
PEFY-WP40,50,63VMA-E	1100	250~350	1200	1700

Model	WIDE C	D	E	F
PEFY-WP71,80,100VMA-E	1400	400~500	1500	2000
PEFY-WP125VMA-E	1600	500~600	1700	2200

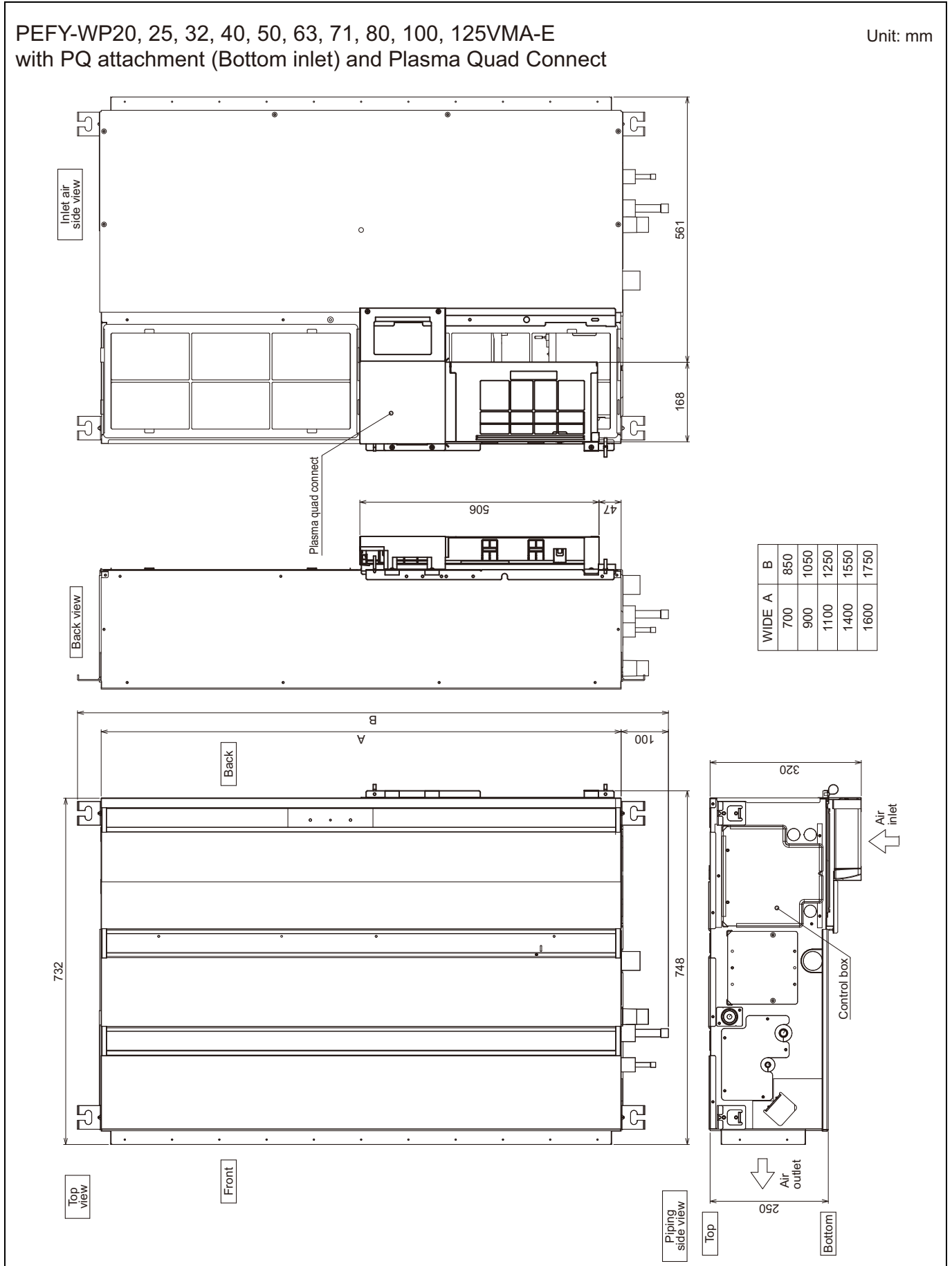
The drawing above is a sample image of the optional parts being installed on a unit.

## 8. OPTIONAL PARTS

Ceiling concealed (Medium static pressure type)

PEFY-WP20, 25, 32, 40, 50, 63, 71, 80, 100, 125VMA-E  
with PQ attachment (Bottom inlet) and Plasma Quad Connect

Unit: mm



Model	WIDE A	B
PEFY-WP20VMA-E	700	850
PEFY-WP25,32VMA-E	900	1050
PEFY-WP40,50,63VMA-E	1100	1250

Model	WIDE A	B
PEFY-WP71,80,100VMA-E	1400	1550
PEFY-WP125VMA-E	1600	1750

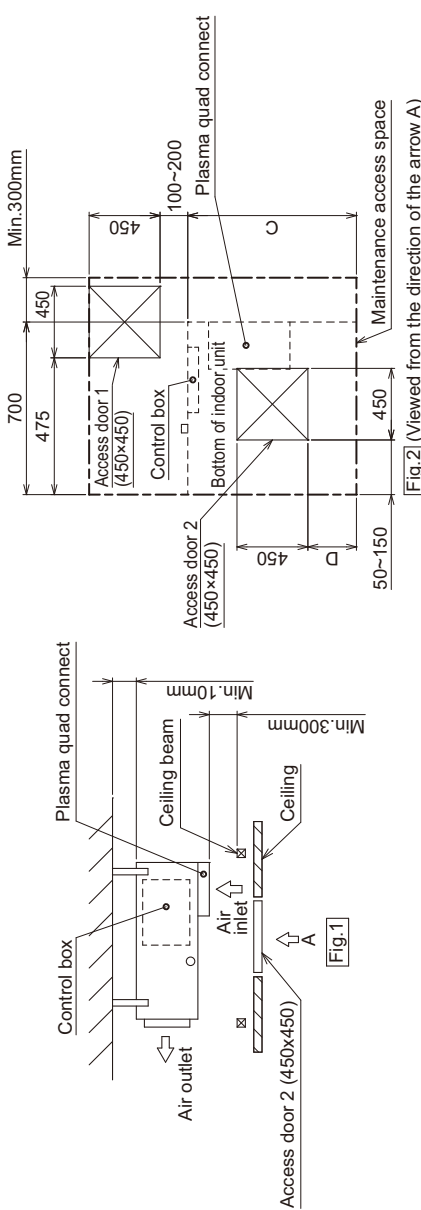
The drawing above is a sample image of the optional parts being installed on a unit.

PEFY-WP20, 25, 32, 40, 50, 63, 71, 80, 100, 125VMA-E with PQ attachment (Bottom inlet) and Plasma Quad Connect

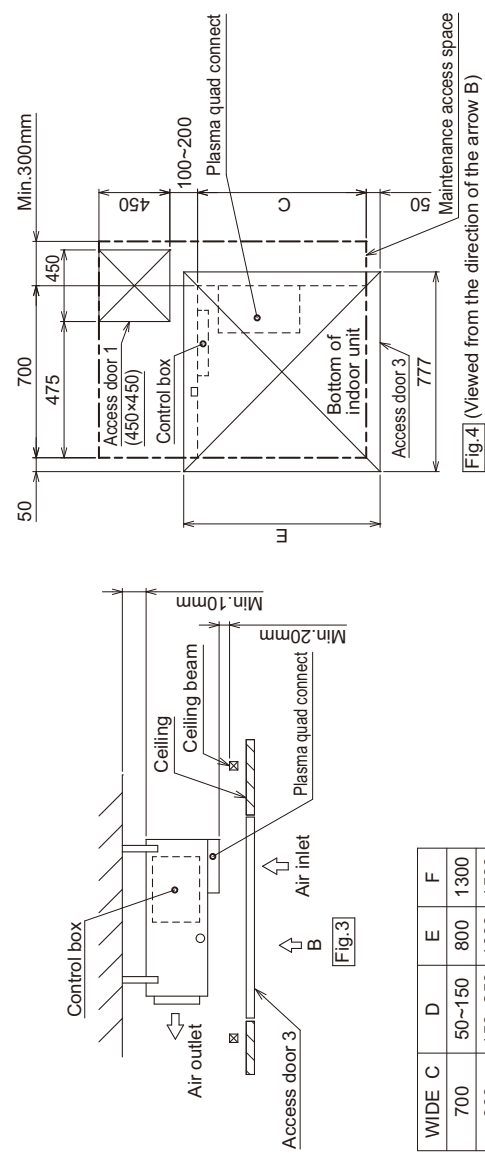
Unit: mm

[Maintenance access space]  
Secure enough access space to allow for the maintenance, inspection, and replacement of the motor, fan, drain pump, heat exchanger, and control box in one of the following ways.  
Select an installation site for the indoor unit so that its maintenance access space will not be obstructed by beams or other objects.

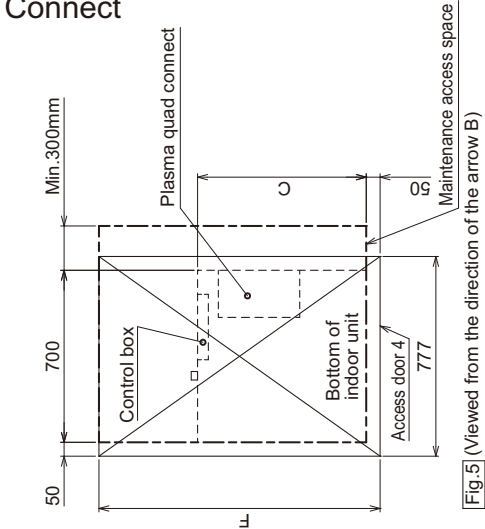
- (1) When a space of 300mm or more is available below the unit between the unit and the ceiling. (Fig. 1)
  - Create access door 1 and 2 (450x450mm each) as shown in Fig.2.
- (2) When a space of less than 300mm is available below the unit between the unit and the ceiling. (At least 20mm of space should be left below the unit as shown in Fig.3.)
  - Create access door 1 diagonally below the control box and access door 3 below the unit as shown in Fig.4.
  - or
  - Create access door 4 below the control box and the unit as shown in Fig.5.



[Fig.2] (Viewed from the direction of the arrow A)



[Fig.4] (Viewed from the direction of the arrow B)



[Fig.5] (Viewed from the direction of the arrow B)

WIDE C	D	E	F
700	50~150	800	1300
900	150~250	1000	1500
1100	250~350	1200	1700
1400	400~500	1500	2000
1600	500~600	1700	2200

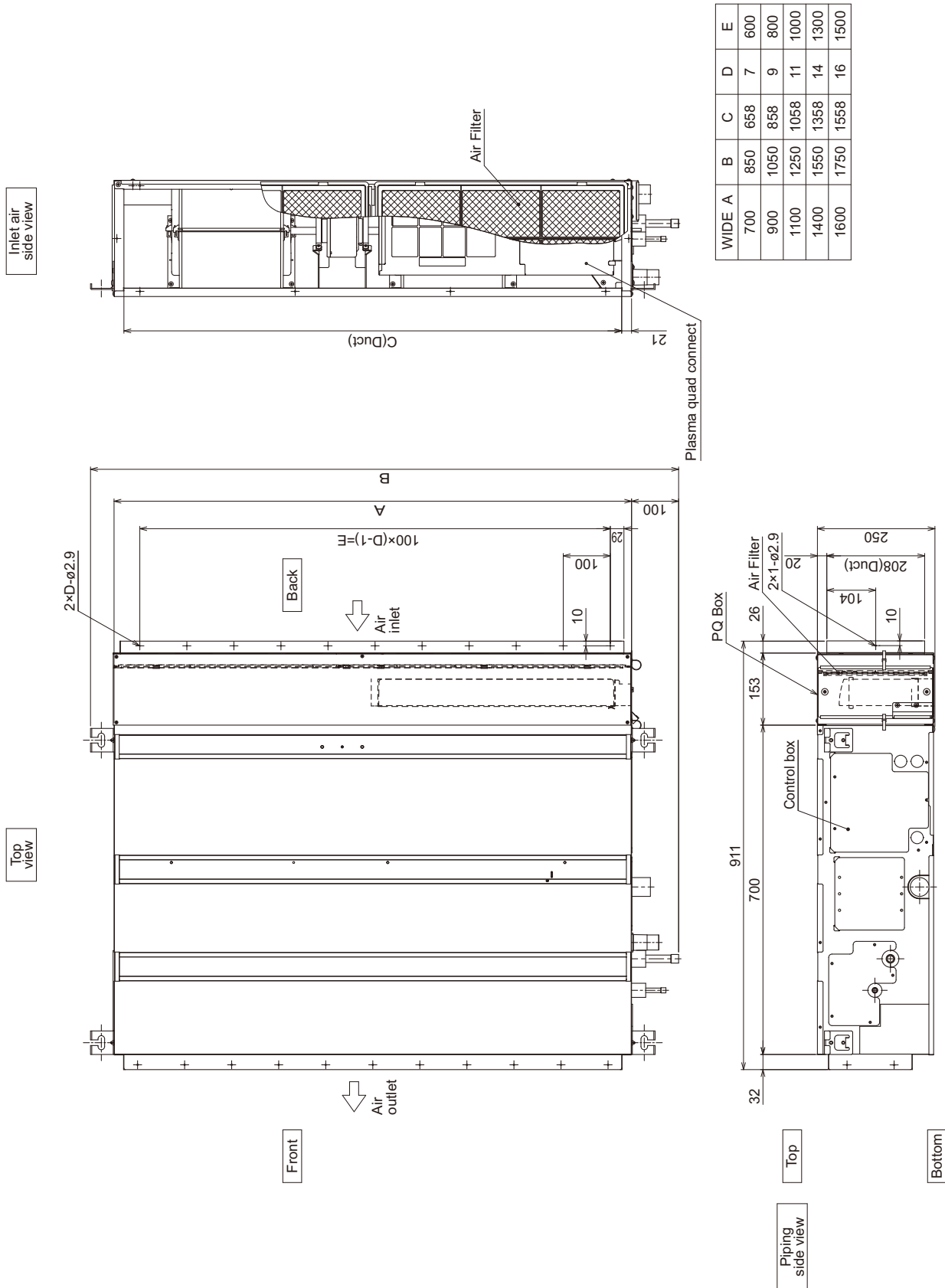
Model	WIDE C	D	E	F
PEFY-WP20VMA-E	700	50~150	800	1300
PEFY-WP25,32VMA-E	900	150~250	1000	1500
PEFY-WP40,50,63VMA-E	1100	250~350	1200	1700

Model	WIDE C	D	E	F
PEFY-WP71,80,100VMA-E	1400	400~500	1500	2000
PEFY-WP125VMA-E	1600	500~600	1700	2200

The drawing above is a sample image of the optional parts being installed on a unit.

PEFY-WP20, 25, 32, 40, 50, 63, 71, 80, 100, 125VMA-E  
with PQ box and Plasma Quad Connect

Unit: mm



WIDE A	B	C	D	E
700	850	658	7	600
900	1050	858	9	800
1100	1250	1058	11	1000
1400	1550	1358	14	1300
1600	1750	1558	16	1500

Model	WIDE A	B	C	D	E
PEFY-WP20VMA-E	700	850	658	7	600
PEFY-WP25,32VMA-E	900	1050	858	9	800
PEFY-WP40,50,63VMA-E	1100	1250	1058	11	1000

Model	WIDE A	B	C	D	E
PEFY-WP71,80,100VMA-E	1400	1550	1358	14	1300
PEFY-WP125VMA-E	1600	1750	1558	16	1500

The drawing above is a sample image of the optional parts being installed on a unit.



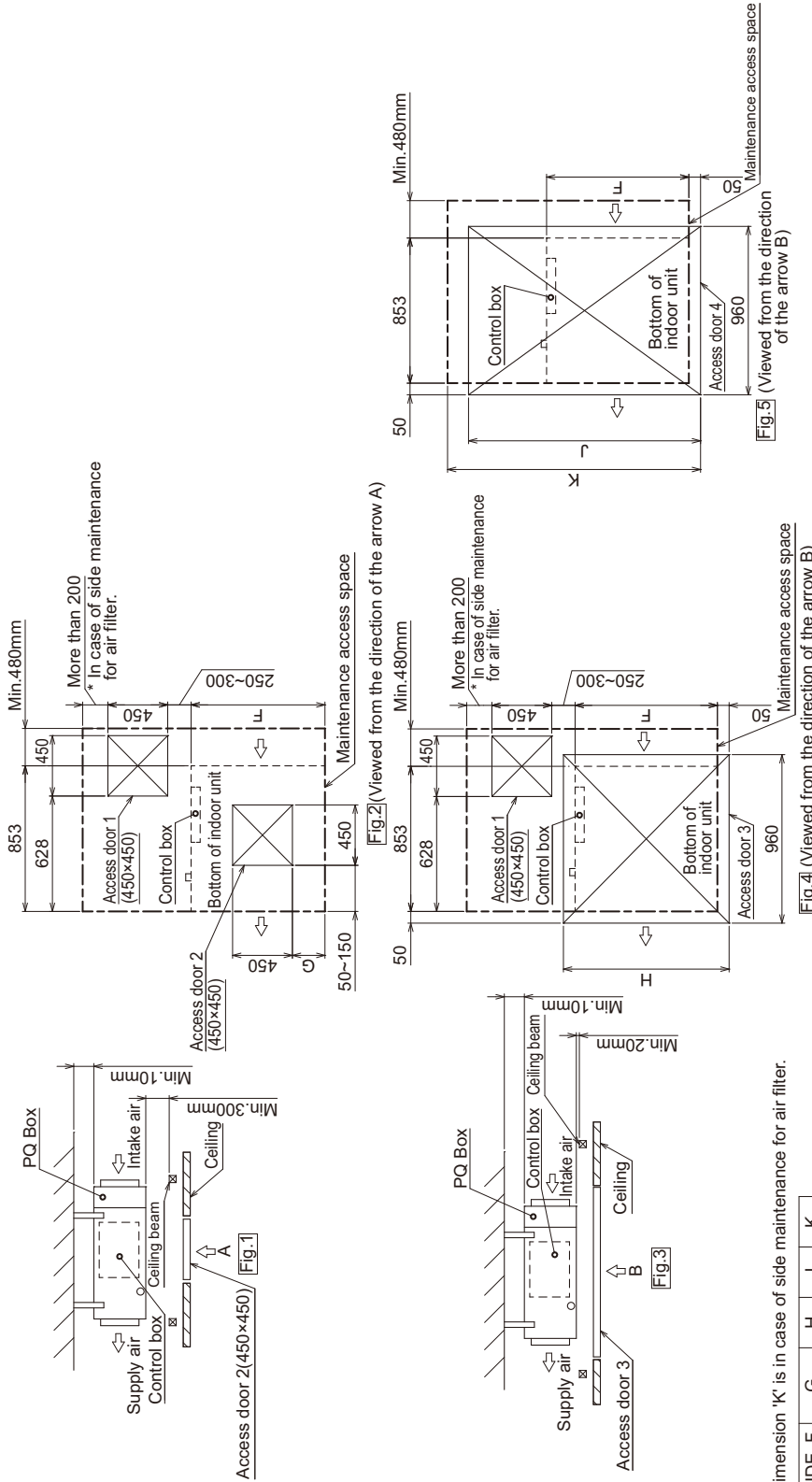
PEFY-WP20, 25, 32, 40, 50, 63, 71, 80, 100, 125VMA-E  
with PQ box and Plasma Quad Connect

Unit: mm

PEFY-WP-VMA-E

[Maintenance access space]  
Secure enough access space to allow for the maintenance, inspection, and replacement of the motor, fan, drain pump, heat exchanger, and control box in one of the following ways.  
Select an installation site for the indoor unit so that its maintenance access space will not be obstructed by beams or other objects.

- (1) When a space of 300mm or more is available below the unit between the unit and the ceiling. (Fig.1)
  - Create access door 1 and 2 (450x450mm each) as shown in Fig.2.
  - (Access door 2 is not required if enough space is available below the unit for a maintenance worker to work in.)
- (2) When a space of less than 300mm is available below the unit between the unit and the ceiling. (At least 20mm of space should be left below the unit as shown in Fig.3.)
  - Create access door 1 diagonally below the control box and access door 3 below the unit as shown in Fig.4.
  - or
  - Create access door 4 below the control box and the unit as shown in Fig.5.



\* Dimension 'K' is in case of side maintenance for air filter.

WIDE F	G	H	J	K
700	50~150	800	1300	1450
900	150~250	1000	1500	1850
1100	250~350	1200	1700	-
1400	400~500	1500	2000	2150
1600	500~600	1700	2200	2550

Model	WIDE F	G	H	J	K
PEFY-WP20VMA-E	700	50~150	800	1300	1450
PEFY-WP25,32VMA-E	900	150~250	1000	1500	1850
PEFY-WP40,50,63VMA-E	1100	250~350	1200	1700	-

Model	WIDE F	G	H	J	K
PEFY-WP71,80,100VMA-E	1400	400~500	1500	2000	2150
PEFY-WP125VMA-E	1600	500~600	1700	2200	2550

The drawing above is a sample image of the optional parts being installed on a unit.

**⚠ Warning**

- Do not use refrigerant other than the type indicated in the manuals provided with the unit and on the nameplate.
  - Doing so may cause the unit or pipes to burst, or result in explosion or fire during use, repair, or at the time of disposal of the unit.
  - It may also be in violation of applicable laws.
  - MITSUBISHI ELECTRIC CORPORATION cannot be held responsible for malfunctions or accidents resulting from the use of the wrong type of refrigerant.
- Our air conditioning equipment and heat pumps contain a fluorinated greenhouse gas, R410A/R32.

**MITSUBISHI ELECTRIC CORPORATION**

[www.MitsubishiElectric.com](http://www.MitsubishiElectric.com)