

PEFY-MS20, 25, 32, 40, 50, 63, 71, 80, 100, 125, 140VMA-A

Unit: mm

[Maintenance access space]
 Secure enough access space to allow for the maintenance, inspection, and replacement of the motor, fan, drain pump, heat exchanger, and control box in one of the following ways.
 Select an installation site for the indoor unit so that its maintenance access space will not be obstructed by beams or other objects.
 (1) When a space of 300mm or more is available below the unit between the unit and the ceiling. (Fig.1)
 · Create access door 1 and 2 (450x450mm each) as shown in Fig.2.
 (Access door 2 is not required if enough space is available below the unit for a maintenance worker to work in.)

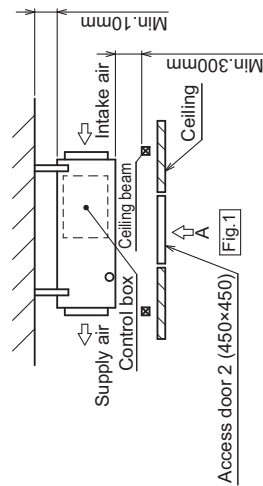
(2) When a space of less than 300mm is available below the unit between the unit and the ceiling.

(At least 20mm of space should be left below the unit as shown in Fig.3.)

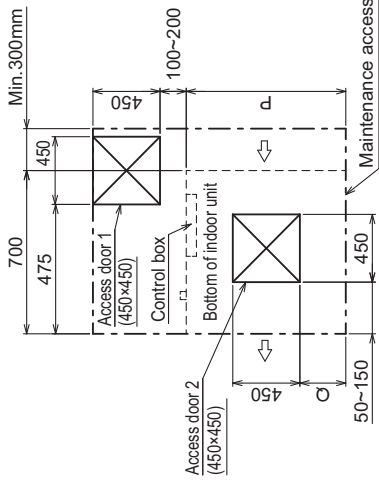
· Create access door 1 diagonally below the control box and access door 3 below the unit as shown in Fig.4.

or

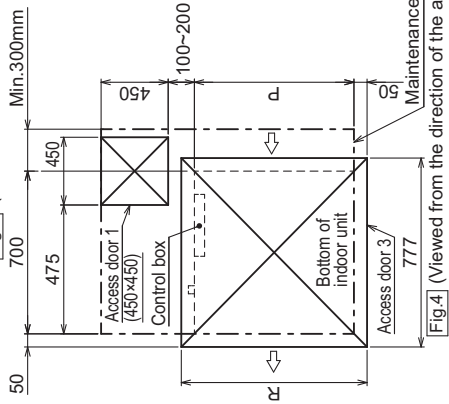
· Create access door 4 below the control box and the unit as shown in Fig.5.



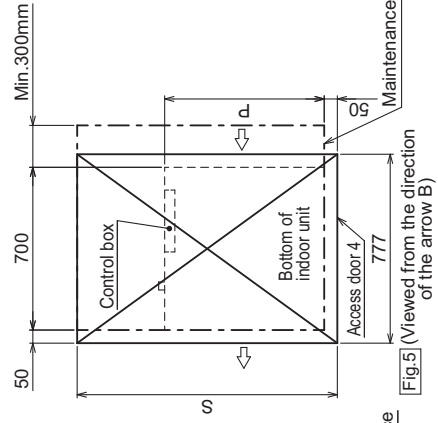
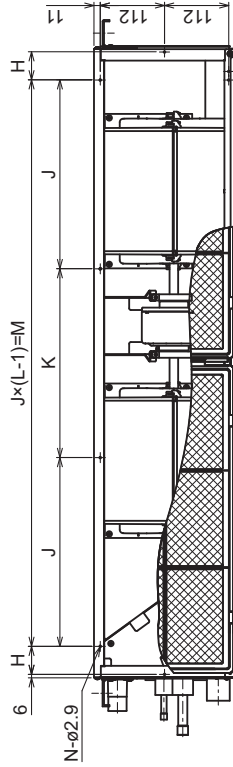
Access door 2 (450x450) (Fig.1)



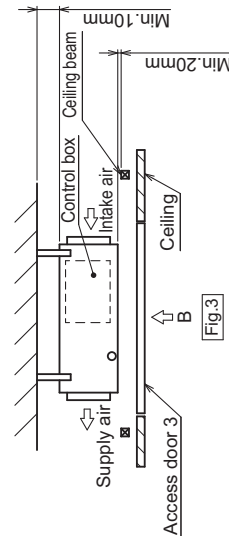
[Fig.2] (Viewed from the direction of the arrow A)



[Fig.4] (Viewed from the direction of the arrow B)



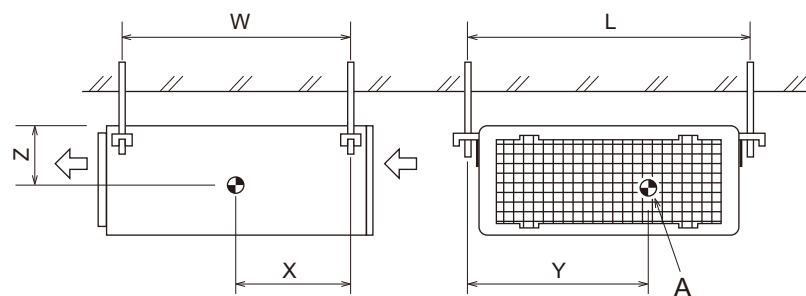
[Fig.5] (Viewed from the direction of the arrow B)



[Fig.3]

Model	H	J	K	L	M	N	P	Q	R	S
PEFY-MS20, 25, 32VMA-A	44	150	300	4	780	10	700	50~150	800	1300
PEFY-MS40VMA-A	54	260	4	780	10	900	150~250	1000	1500	1500
PEFY-MS50, 63VMA-A	49	330	4	990	10	1100	250~350	1200	1700	1700
PEFY-MS71, 80, 100, 125VMA-A	54	320	5	1280	12	1400	400~500	1500	2000	2000
PEFY-MS140VMA-A	54	370	5	1480	12	1600	500~600	1700	2200	2200

PEFY-MS20, 25, 32, 40, 50, 63, 71, 80, 100, 125, 140VMA(L)-A



A : Center of gravity

(mm) [in]

Model name	W	L	X	Y	Z
PEFY-MS20VMA(L)-A	643 [25 - 6/16]	754 [29 - 11/16]	330 [13]	300 [11 - 13/16]	130 [5 - 2/16]
PEFY-MS25VMA(L)-A	643 [25 - 6/16]	754 [29 - 11/16]	330 [13]	300 [11 - 13/16]	130 [5 - 2/16]
PEFY-MS32VMA(L)-A	643 [25 - 6/16]	754 [29 - 11/16]	330 [13]	300 [11 - 13/16]	130 [5 - 2/16]
PEFY-MS40VMA(L)-A	643 [25 - 6/16]	954 [37 - 9/16]	340 [13 - 7/16]	375 [14 - 13/16]	130 [5 - 2/16]
PEFY-MS50VMA(L)-A	643 [25 - 6/16]	1154 [45 - 7/16]	325 [12 - 13/16]	525 [20 - 11/16]	130 [5 - 2/16]
PEFY-MS63VMA(L)-A	643 [25 - 6/16]	1154 [45 - 7/16]	325 [12 - 13/16]	525 [20 - 11/16]	130 [5 - 2/16]
PEFY-MS71VMA(L)-A	643 [25 - 6/16]	1454 [57 - 4/16]	330 [13]	675 [26 - 10/16]	130 [5 - 2/16]
PEFY-MS80VMA(L)-A	643 [25 - 6/16]	1454 [57 - 4/16]	330 [13]	675 [26 - 10/16]	130 [5 - 2/16]
PEFY-MS100VMA(L)-A	643 [25 - 6/16]	1454 [57 - 4/16]	330 [13]	675 [26 - 10/16]	130 [5 - 2/16]
PEFY-MS125VMA(L)-A	643 [25 - 6/16]	1454 [57 - 4/16]	330 [13]	675 [26 - 10/16]	130 [5 - 2/16]
PEFY-MS140VMA(L)-A	643 [25 - 6/16]	1654 [65 - 2/16]	332 [13 - 2/16]	725 [28 - 9/16]	130 [5 - 2/16]

PEFY-MS-VMA(L)-A