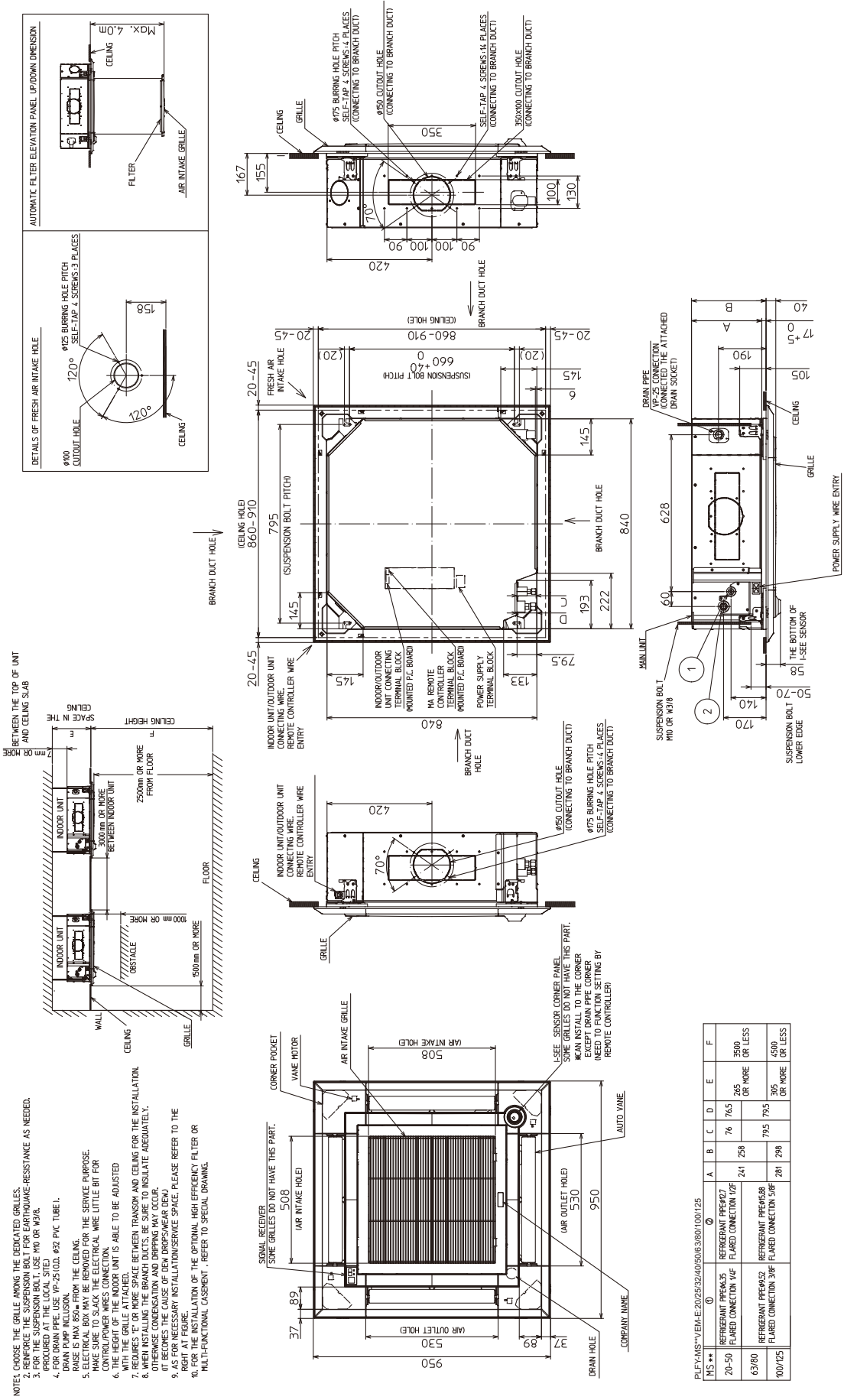


PLFY-MS20, 25, 32, 40, 50, 63, 80, 100, 125VEM-E

Unit: mm



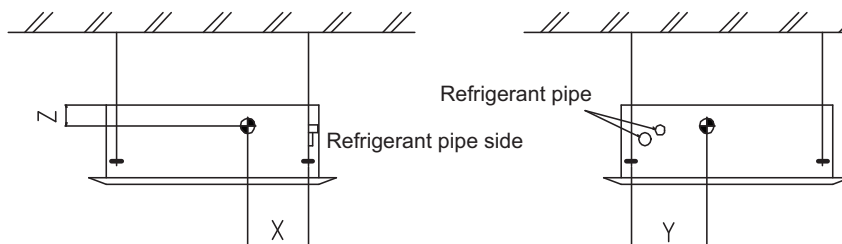
- NOTE: CHOOSE THE GRILLE AMONG THE DEDICATED GRILLES.
- 2. FOR THE SUSPENSION BOLT FOR EARTHQUAKE-RESISTANCE AS NEEDED.
- 3. FOR THE SUSPENSION BOLT FOR THE SERVICE PURPOSE.
- 4. FOR DRAIN PIPE, USE VP-25 (OD. Ø32 PVC TUBE).
- 5. DRAIN PUMP INCLUSION.
- 6. RISE IS MAX. 650mm FROM THE CEILING.
- 7. MAKE SURE TO SLACK THE ELECTRICAL WIRE LITTLE BIT FOR CONTROL/POWER WIRES CONNECTION.
- 8. WITH THE GRILLE ATTACHED, BETWEEN TRANSOM AND CEILING FOR THE INSTALLATION, OTHERWISE CONDENSATION AND DRIPPING MAY OCCUR (IT BECOMES THE CAUSE OF DEW DROPS/WEAR DEW).
- 9. AS FOR NECESSARY INSTALLATION/SERVICE SPACE, PLEASE REFER TO THE RIGHT AT FIGURE 10.
- 10. IN CASE OF THE OPTIONAL HIGH-EFFICIENCY FILTER OR MULTI-FUNCTIONAL CASEMENT, REFER TO SPECIAL DRAWING.

PLFY-MS-VEM-E:20/25/32/40/50/63/80/100/125

MS**	REFRIGERANT	A	B	C	D	E	F
20-50	REFRIGERANT PPE#27 FLARED CONNECTION 1/2"	241	256	76	265	3500	OR MORE
63/80	REFRIGERANT PPE#52 FLARED CONNECTION 3/8"	281	296	795	305	4500	OR MORE
100/125	REFRIGERANT PPE#58 FLARED CONNECTION 1/2"	281	296	795	305	4500	OR MORE

PLFY-MS-VEM-E

PLFY-MS20, 25, 32, 40, 50, 63, 80, 100, 125VEM-E



(mm)[in]

Model name	X	Y	Z
PLFY-MS20VEM-E	325 [12-13/16]	390 [15-3/8]	115 [4-17/32]
PLFY-MS25VEM-E	325 [12-13/16]	390 [15-3/8]	115 [4-17/32]
PLFY-MS32VEM-E	325 [12-13/16]	390 [15-3/8]	115 [4-17/32]
PLFY-MS40VEM-E	325 [12-13/16]	390 [15-3/8]	115 [4-17/32]
PLFY-MS50VEM-E	325 [12-13/16]	390 [15-3/8]	115 [4-17/32]
PLFY-MS63VEM-E	325 [12-13/16]	390 [15-3/8]	115 [4-17/32]
PLFY-MS80VEM-E	325 [12-13/16]	390 [15-3/8]	115 [4-17/32]
PLFY-MS100VEM-E	325 [12-13/16]	380 [14-31/32]	100 [3-15/16]
PLFY-MS125VEM-E	325 [12-13/16]	380 [14-31/32]	100 [3-15/16]