

2. EXTERNAL DIMENSIONS

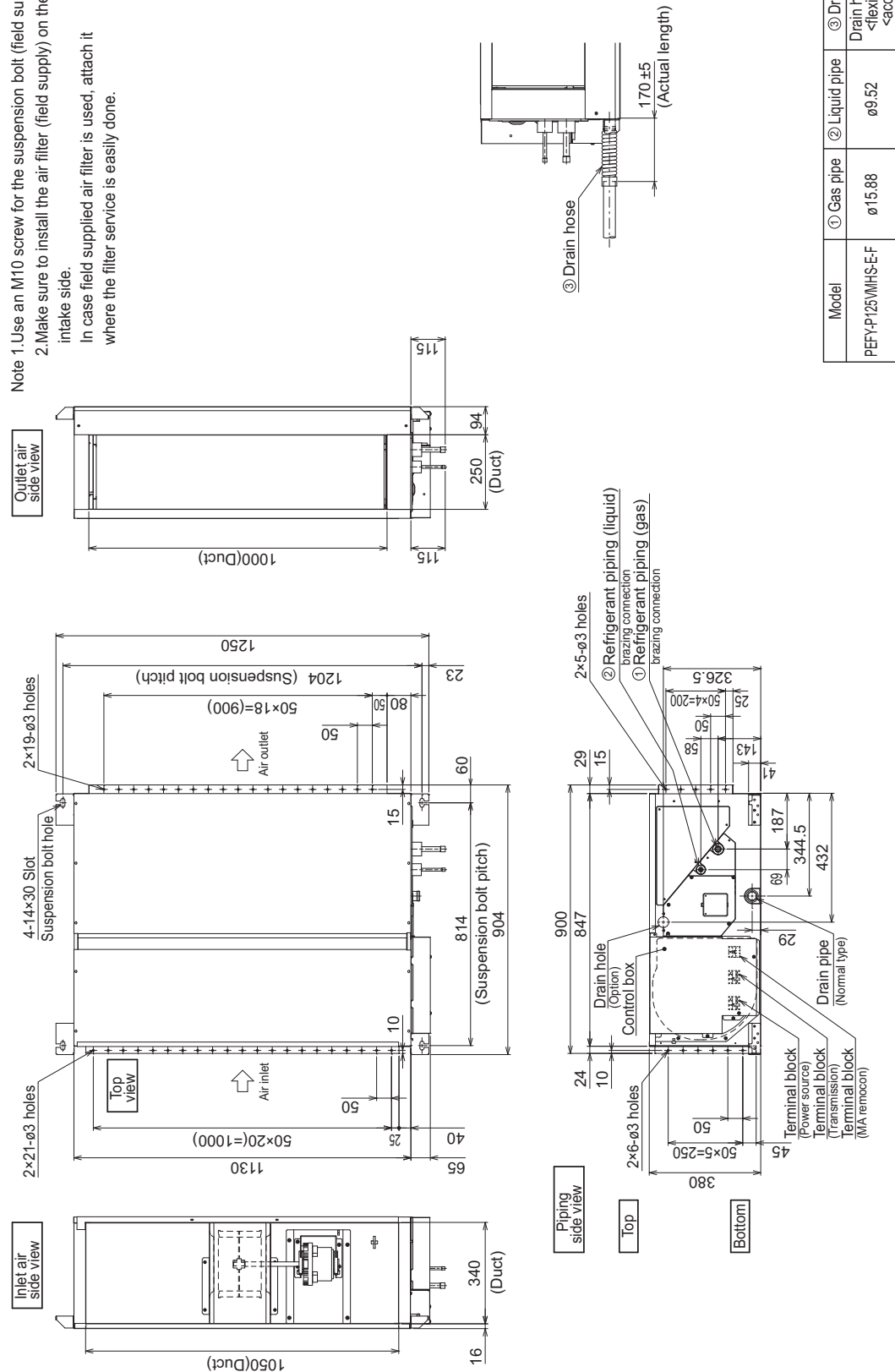
Ceiling concealed (Fresh air intake type)

PEFY-P125VMHS-E-F

Unit: mm

- Note 1. Use an M10 screw for the suspension bolt (field supply).
 2. Make sure to install the air filter (field supply) on the air intake side.

In case field supplied air filter is used, attach it where the filter service is easily done.



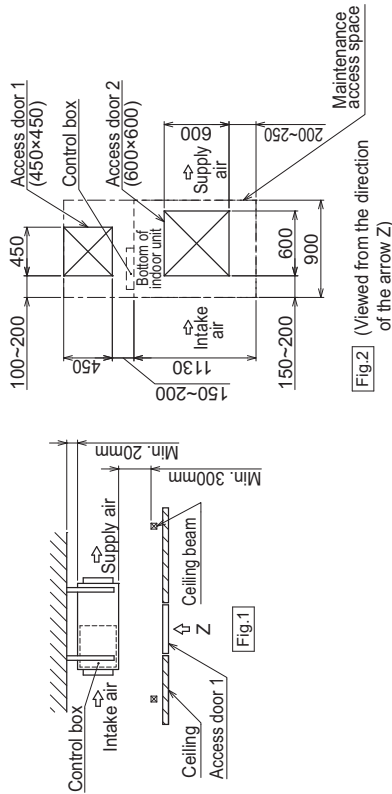
Model	① Gas pipe	② Liquid pipe	③ Drain hose
PEFY-P125VMHS-E-F	ø15.88	ø9.52	Drain hose 32mm <flexible joint> <necessary>

PEFY-P - VMHS-E-F

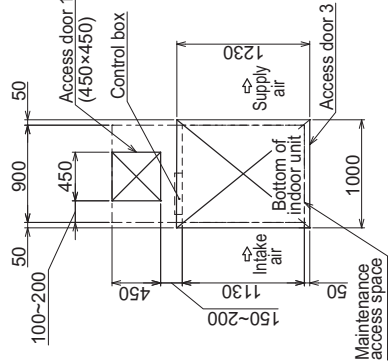
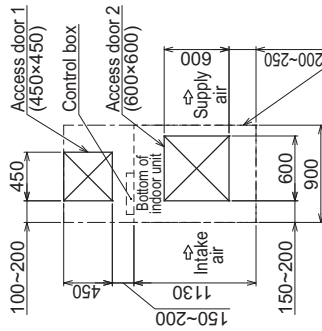
PEFY-P125VMHS-E-F

Unit: mm

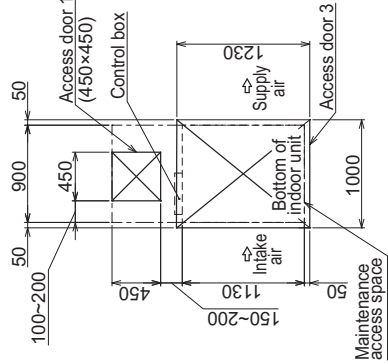
- [Maintenance access space]
 Secure enough access space to allow for the maintenance, inspection, and replacement of the motor, fan, heat exchanger, drain pan and control box in one of the following ways.
 Select an installation site for the indoor unit so that its maintenance access space will not be obstructed by beam or other objects.
- Create access door 1 (450×450mm) for the maintenance from the unit side when the thermostat, LEV and control box is exchanged. (Fig.2,4)
- (1) When a space of 300mm or more is available below the unit between the unit and the ceiling.
 Create access door 2 (600×600mm) for the maintenance from the bottom when the motor, fan, heat exchanger and drain pan is cleaned (exchanged). (Fig.2)
- (2) When a space of less than 300mm is available below the unit between the unit and the ceiling.
 (At least 20mm of space should be left below the unit as shown in Fig.3.)
 Create access door 3 for the maintenance from the bottom when the motor, fan, heat exchanger and drain pan is cleaned (exchanged). (Fig.4)



[Fig.2] (Viewed from the direction of the arrow Z)



[Fig.4] (Viewed from the direction of the arrow Y)



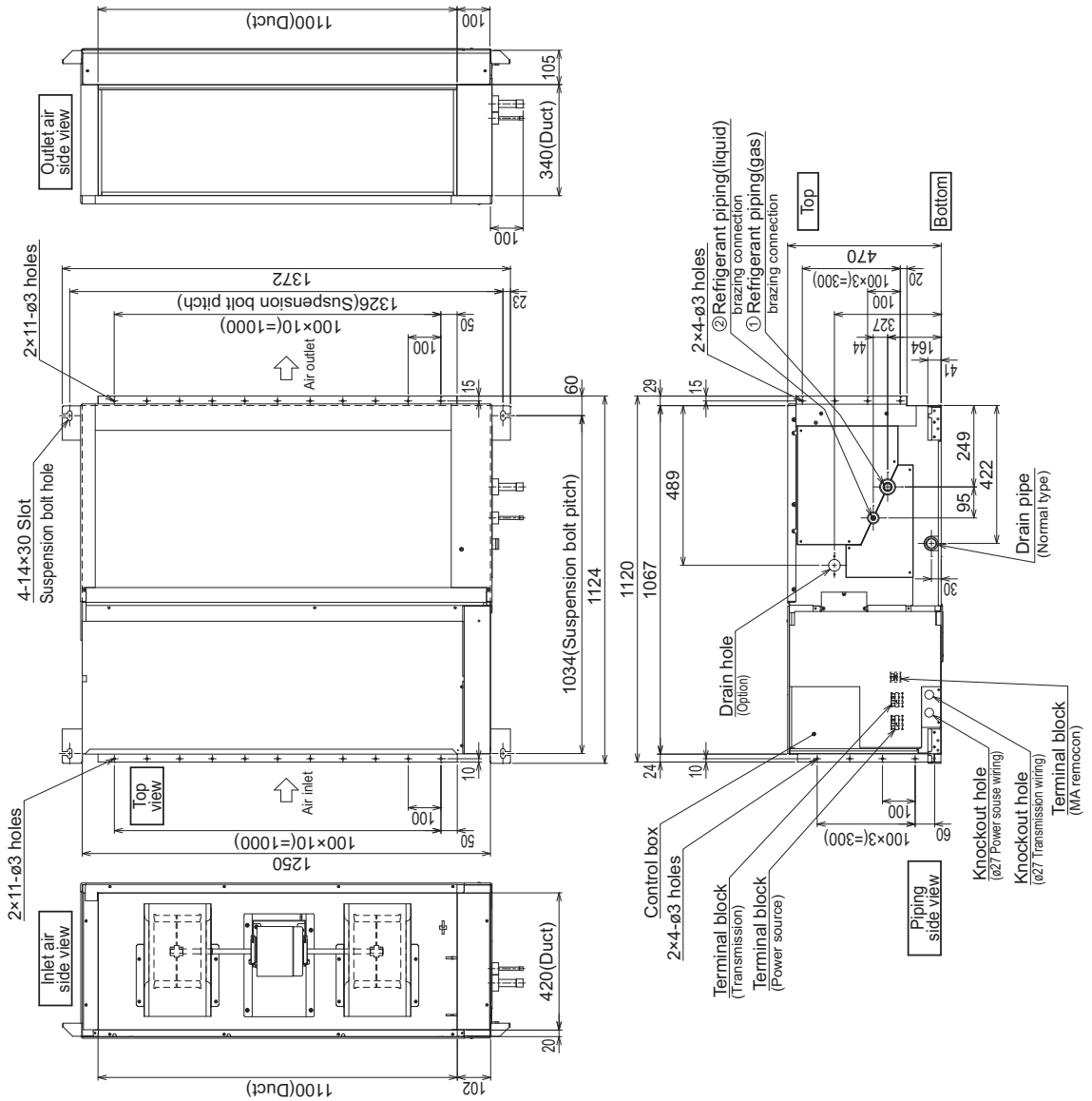
2. EXTERNAL DIMENSIONS

Ceiling concealed (Fresh air intake type)

PEFY-P200, 250VMHS-E-F

Unit: mm

- Note 1. Use an M10 screw for the suspension bolt (field supply).
 2. Make sure to install the air filter (field supply) on the air intake side.
 In case field supplied air filter is used, attach it where the filter service is easily done.



Model	① Gas pipe	② Liquid pipe	③ Drain hose
PEFY200VMHS-E-F	ø19.05	ø9.52	Drain hose 32mm <flexible joint>
PEFY250VMHS-E-F	ø22.2	ø9.52	<accessory>

PEFY-P-VMHS-E-F

PEFY-P200, 250VMHS-E-F

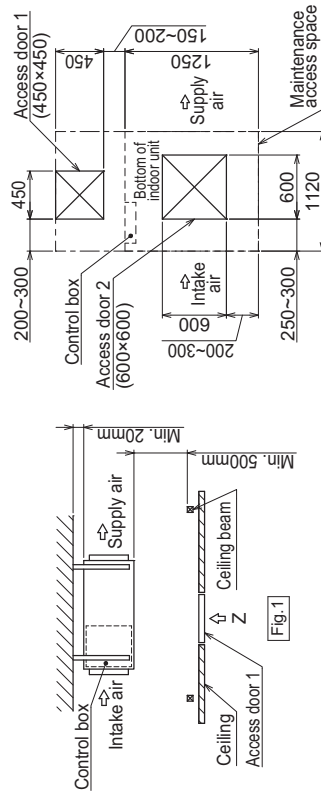
Unit: mm

[Maintenance access space]

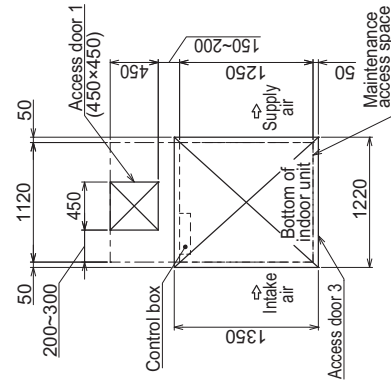
Secure enough access space to allow for the maintenance, inspection, and replacement of the motor, fan, heat exchanger, drain pan and control box in one of the following ways.
Select an installation site for the indoor unit so that its maintenance access space will not be obstructed by beam or other objects.

Create access door 1 (450×450mm) for the maintenance from the unit side when the thermistor, LEV and control box is exchanged. (Fig.2,4)

- (1) When a space of 500mm or more is available below the unit between the unit and the ceiling.
Create access door 2 (600×600mm) for the maintenance from the bottom when the motor, fan, heat exchanger and drain pan is cleaned(exchanged). (Fig.2)
- (2) When a space of less than 500mm is available below the unit between the unit and the ceiling.
(At least 20mm of space should be left below the unit as shown in Fig.3.)
Create access door 3 for the maintenance from the bottom when the motor, fan, heat exchanger and drain pan is cleaned(exchanged). (Fig.4)



[Fig.2] (Viewed from the direction of the arrow Z)



[Fig.4] (Viewed from the direction of the arrow Y)