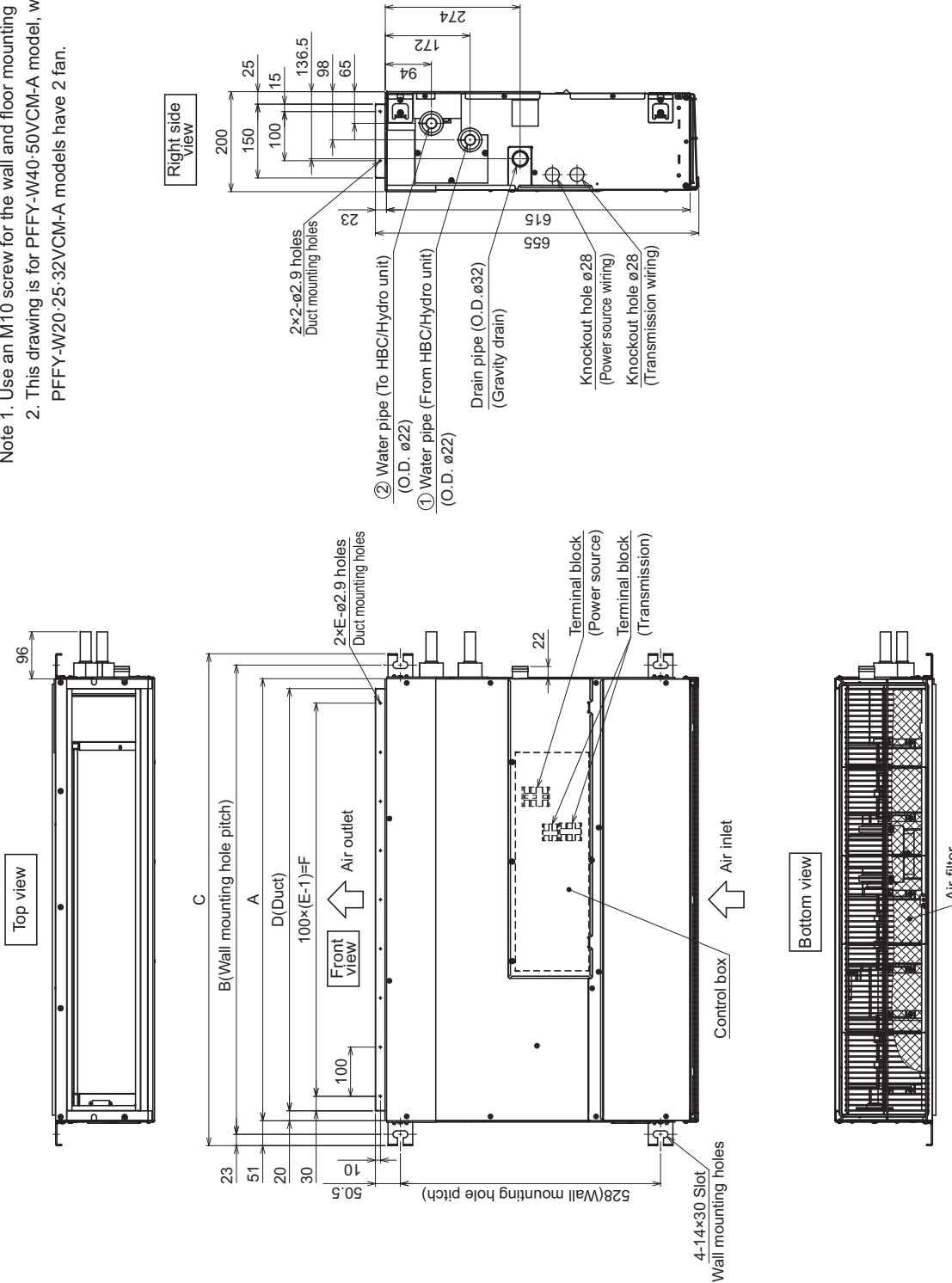


PFFY-W20, 25, 32, 40, 50VCM-A Bottom suction · wall mounting

Unit: mm

- Note 1. Use an M10 screw for the wall and floor mounting bolt (field supply).  
 2. This drawing is for PFFY-W40-50VCM-A model, which have 3 fans.  
 PFFY-W20-25-32VCM-A models have 2 fan.

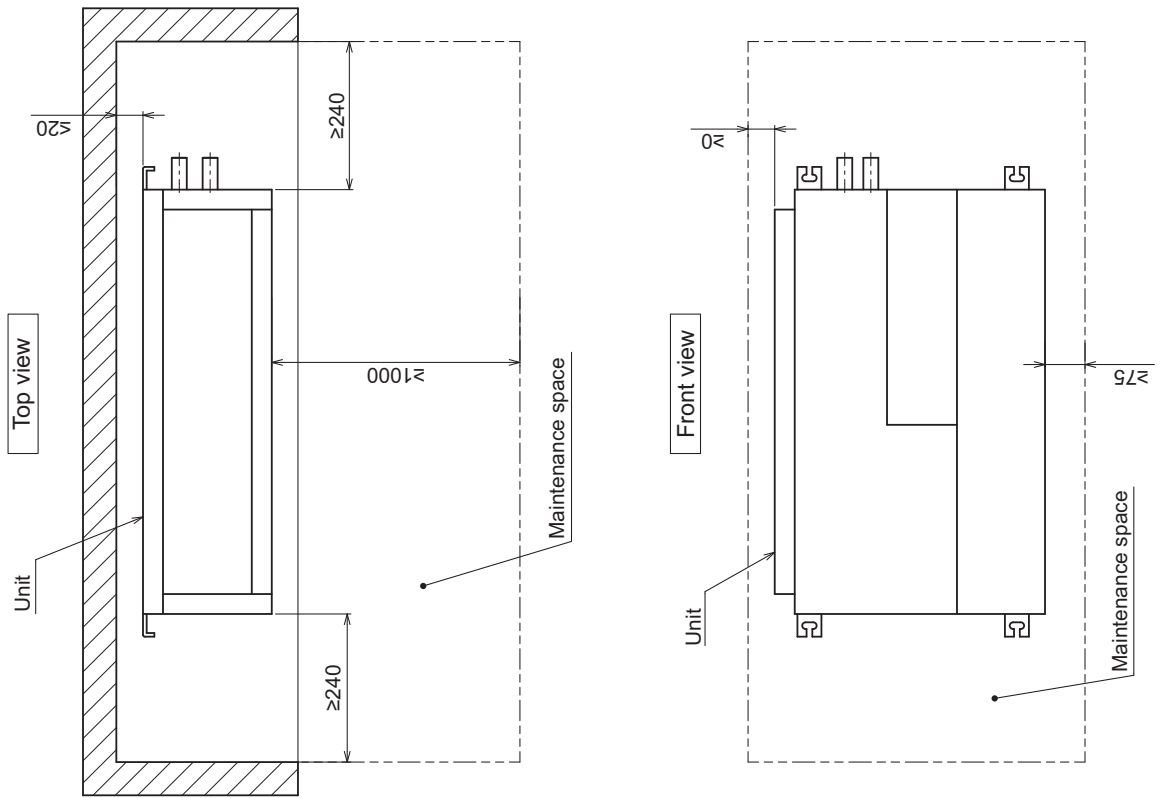


Model	A	B	C	D	E	F	① Water pipe (From HBC/Hydro unit)	② Water pipe (To HBC/Hydro unit)
PFFY-W20-25-32VCM-A	700	756	802	660	7	600	O.D. ø22	O.D. ø22
PFFY-W40-50VCM-A	900	956	1002	860	9	800		

PFFY-W20, 25, 32, 40, 50VCM-A Bottom suction · wall mounting

Unit: mm

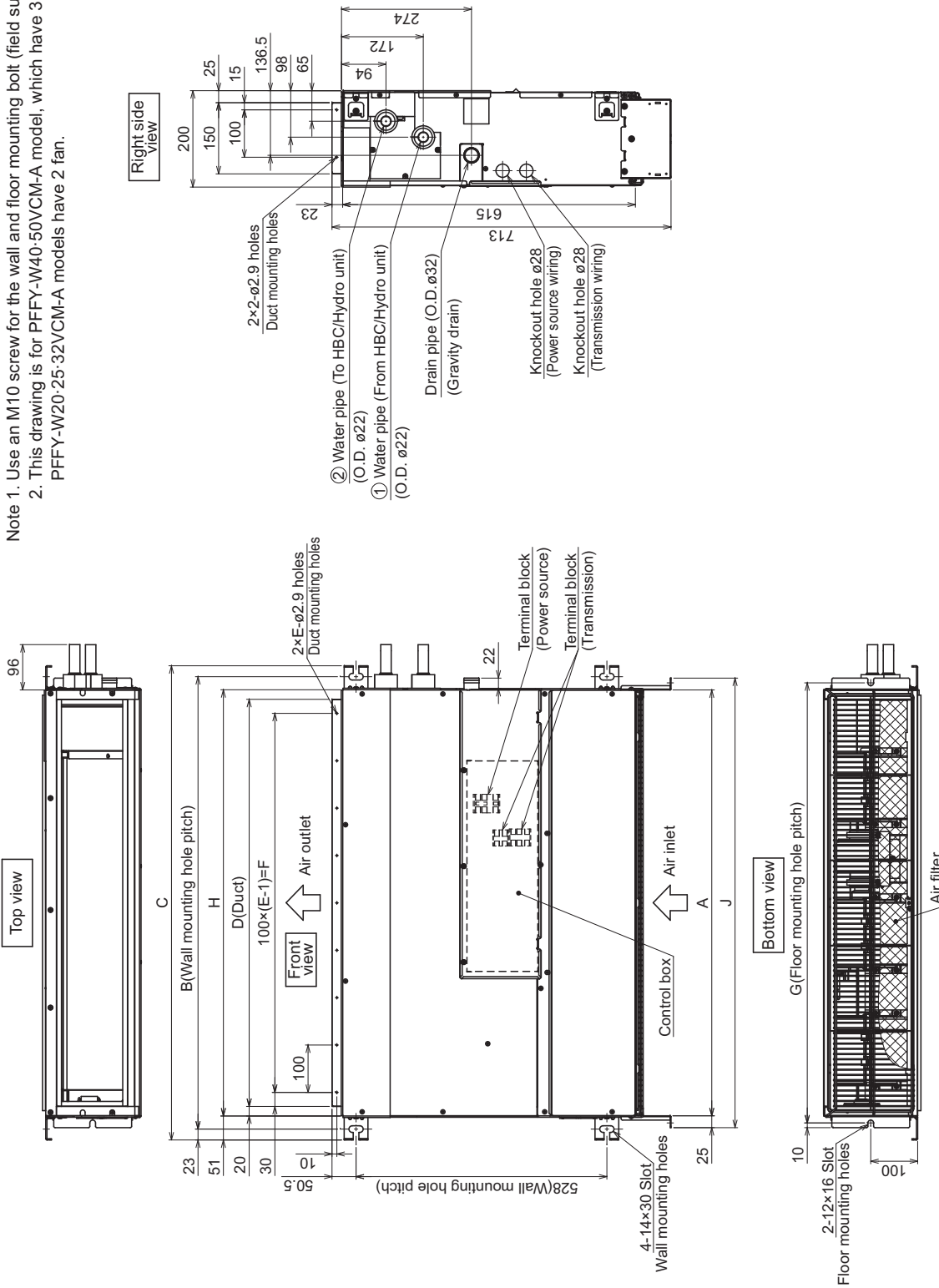
[Maintenance access space]  
Secure enough access space to allow for the maintenance, inspection, and replacement of the motor, fan, heat exchanger, drain pan and control box.



PFFY-W20, 25, 32, 40, 50VCM-A Bottom suction · floor mounting

Unit: mm

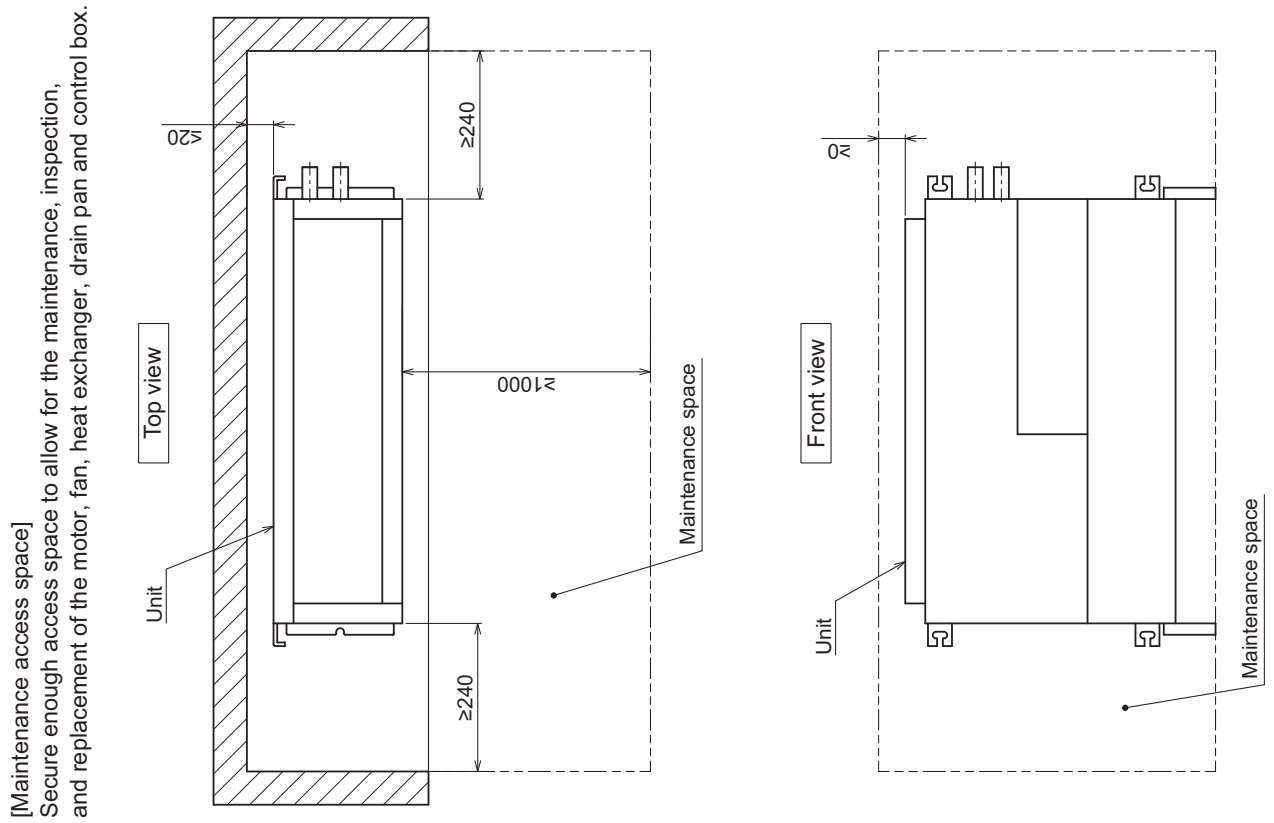
- Note 1. Use an M10 screw for the wall and floor mounting bolt (field supply).  
 2. This drawing is for PFFY-W40-50VCM-A model, which have 3 fans.  
 PFFY-W20-25-32VCM-A models have 2 fan.



Model	A	B	C	D	E	F	G	H	J	① Water pipe (From HBC/Hydro unit) O.D. ø22	② Water pipe (To HBC/Hydro unit) O.D. ø22
PFFY-W20-25-32VCM-A	700	756	802	660	7	600	730	700	750	O.D. ø22	O.D. ø22
PFFY-W40-50VCM-A	900	956	1002	860	9	800	930	900	950	O.D. ø22	O.D. ø22

PFFY-W20, 25, 32, 40, 50VCM-A Bottom suction · floor mounting

Unit: mm



PFFY-W-VCM-A