

PFFY-P-VLRM(M)-E

1. SPECIFICATIONS 1 - 276

2. EXTERNAL DIMENSIONS 1 - 280

3. CENTER OF GRAVITY 1 - 282

4. ELECTRICAL WIRING DIAGRAMS 1 - 283

5. SOUND LEVELS 1 - 285

 5-1. Sound levels 1 - 285

 5-2. NC curves 1 - 286

6. FAN CHARACTERISTICS CURVES 1 - 288

7. ELECTRICAL CHARACTERISTICS 1 - 291

1. SPECIFICATIONS

Floor standing (Concealed type)

PFFY-P-VLRM(M)-E

Model		PFFY-P20VLRM-E	PFFY-P25VLRM-E	PFFY-P32VLRM-E	PFFY-P40VLRM-E	
Power source		1-phase 220-240V 50Hz, 1-phase 208-230V 60Hz				
Cooling capacity (Nominal)	*1 kW	2.2	2.8	3.6	4.5	
	*1 kcal / h	1,900	2,400	3,100	3,900	
	*1 BTU / h	7,500	9,600	12,300	15,400	
	*3 Power input kW	0.04 / 0.06	0.04 / 0.06	0.06 / 0.07	0.065 / 0.075	
	*3 Current input A	0.19 / 0.25	0.19 / 0.25	0.29 / 0.30	0.32 / 0.33	
Heating capacity (Nominal)	*2 kW	2.5	3.2	4.0	5.0	
	*2 kcal / h	2,200	2,800	3,400	4,300	
	*2 BTU / h	8,500	10,900	13,600	17,100	
	*3 Power input kW	0.04 / 0.06	0.04 / 0.06	0.06 / 0.07	0.065 / 0.075	
	*3 Current input A	0.19 / 0.25	0.19 / 0.25	0.29 / 0.30	0.32 / 0.33	
External finish		Galvanized				
External dimension H x W x D		mm 639 x 886 x 220	639 x 886 x 220	639 x 1,006 x 220	639 x 1,006 x 220	
		in. 25-3/16 x 34-15/16 x 8-11/16	25-3/16 x 34-15/16 x 8-11/16	25-3/16 x 39-5/8 x 8-11/16	25-3/16 x 39-5/8 x 8-11/16	
Net weight		kg (lbs) 22 (49)	22 (49)	24 (53)	25 (56)	
Heat exchanger		Cross fin (Aluminium fin and copper tube)				
FAN	Type x Quantity		Sirocco fan x 1	Sirocco fan x 1	Sirocco fan x 2	Sirocco fan x 2
	External static press.	Pa	0	0	0	0
		mmH ₂ O	0	0	0	0
	Motor type		1-phase induction motor			
	Motor output	kW	0.015	0.015	0.018	0.030
	Driving mechanism		Direct-driven by motor			
	Airflow rate (Low-High)	m ³ / min	5.5 - 6.5	5.5 - 6.5	7.0 - 9.0	9.0 - 11.0
		L / s	92 - 108	92 - 108	117 - 150	150 - 183
cfm		194 - 230	194 - 230	247 - 318	318 - 388	
Sound pressure level (Low-High) (measured in anechoic room)	dB <A>	32 - 38 (220V)	32 - 38 (220V)	33 - 38 (220V)	36 - 41 (220V)	
	dB <A>	33 - 39 (230V)	33 - 39 (230V)	34 - 39 (230V)	37 - 42 (230V)	
	*3 dB <A>	34 - 40 (240V)	34 - 40 (240V)	35 - 40 (240V)	38 - 43 (240V)	
Insulation material		Polyethylene foam, Urethane foam				
Air filter		PP honeycomb fabric (washable)				
Protection device		Fuse				
Refrigerant control device		LEV				
Connectable outdoor unit		R410A CITY MULTI				
Diameter of refrigerant pipe	Liquid (R410A)	mm (in.) ø6.35 (ø1/4) Flare	ø6.35 (ø1/4) Flare	ø6.35 (ø1/4) Flare	ø6.35 (ø1/4) Flare	
	Gas (R410A)	mm (in.) ø12.7 (ø1/2) Flare	ø12.7 (ø1/2) Flare	ø12.7 (ø1/2) Flare	ø12.7 (ø1/2) Flare	
Field drain pipe size		mm (in.) I.D. 26mm (1)				
Drawing	External	IU-W65-3951				
	Wiring	IU-W65-3960				
	Refrigerant cycle	-				
Standard attachment	Document	Installation Manual, Instruction Book				
	Accessory	Drain hose (O.D.27mm(1-3/32), (End O.D.20mm(13/16))) (flexible joint)				
Remark	Optional parts	-				
	Installation	Details on foundation work, duct work, insulation work, electrical wiring, power source switch, and other items shall be referred to the Installation Manual.				
Note :		*1 Nominal cooling conditions	*2 Nominal heating conditions	Unit converter		
		Indoor : 27°CDB/19°CWB (81°FDB/66°FWB)	20°CDB (68°FDB)	kcal/h = kW x 860		
		Outdoor : 35°CDB (95°FDB)	7°CDB/6°CWB (45°FDB/43°FWB)	BTU/h = kW x 3,412		
		Pipe length : 7.5 m (24-9/16 ft)	7.5 m (24-9/16 ft)	cfm = m ³ /min x 35.31		
		Level difference : 0 m (0 ft)	0 m (0 ft)	lbs = kg / 0.4536		
		* Nominal conditions *1, *2 are subject to JIS B8615-1.				
		* Due to continuing improvement, above specification may be subject to change without notice.				
		*3 The values are measured at the rated external static pressure.				
		*Above specification data is subject to rounding variation.				

1. SPECIFICATIONS

Floor standing (Concealed type)

Model			PFFY-P50VLRM-E	PFFY-P63VLRM-E	
Power source			1-phase 220-240V 50Hz, 1-phase 208-230V 60Hz		
Cooling capacity (Nominal)	*1	kW	5.6	7.1	
	*1	kcal / h	4,800	6,100	
	*1	BTU / h	19,100	24,200	
	*3	Power input	kW	0.085 / 0.09	0.1 / 0.11
	*3	Current input	A	0.40 / 0.41	0.46 / 0.47
Heating capacity (Nominal)	*2	kW	6.3	8.0	
	*2	kcal / h	5,400	6,900	
	*2	BTU / h	21,500	27,300	
	*3	Power input	kW	0.085 / 0.09	0.1 / 0.11
	*3	Current input	A	0.40 / 0.41	0.46 / 0.47
External finish			Galvanized		
External dimension H x W x D		mm	639 x 1,246 x 220	639 x 1,246 x 220	
		in.	25-3/16 x 49-1/16 x 8-11/16	25-3/16 x 49-1/16 x 8-11/16	
Net weight		kg (lbs)	29 (64)	30 (67)	
Heat exchanger			Cross fin (Aluminium fin and copper tube)		
FAN	Type x Quantity		Sirocco fan x 2	Sirocco fan x 2	
	External static press.	Pa	0	0	
		mmH ₂ O	0	0	
	Motor type		1-phase induction motor		
	Motor output	kW	0.035	0.050	
	Driving mechanism		Direct-driven by motor		
	Airflow rate (Low-High)	m ³ / min	12.0 - 14.0	12.0 - 15.5	
L / s		200 - 233	200 - 258		
cfm		424 - 494	424 - 547		
Sound pressure level (Low-High) (measured in anechoic room)	dB <A>	36 - 41 (220V)	38 - 44 (220V)		
		37 - 42 (230V)	39 - 45 (230V)		
	*3 dB <A>	38 - 43 (240V)	40 - 46 (240V)		
Insulation material			Polyethylene foam, Urethane foam		
Air filter			PP honeycomb fabric (washable)		
Protection device			Fuse		
Refrigerant control device			LEV		
Connectable outdoor unit			R410A CITY MULTI		
Diameter of refrigerant pipe	Liquid (R410A)	mm (in.)	ø6.35 (ø1/4) Flare	ø9.52 (ø3/8) Flare	
		Gas (R410A)	mm (in.)	ø12.7 (ø1/2) Flare	ø15.88 (ø5/8) Flare
Field drain pipe size		mm (in.)	I.D. 26mm (1)		
Drawing	External		IU-W65-3951	IU-W65-3951	
	Wiring		IU-W65-3960	IU-W65-3960	
	Refrigerant cycle		-	-	
Standard attachment	Document		Installation Manual, Instruction Book		
	Accessory		Drain hose (O.D.27mm(1-3/32), (End O.D.20mm(13/16))) (flexible joint)		
Remark	Optional parts		-		
	Installation		Details on foundation work, duct work, insulation work, electrical wiring, power source switch, and other items shall be referred to the Installation Manual.		
Note :			*1 Nominal cooling conditions	*2 Nominal heating conditions	Unit converter
			Indoor: 27°CDB/19°CWB (81°FDB/66°FWB)	20°CDB (68°FDB)	kcal/h = kW x 860
			Outdoor: 35°CDB (95°FDB)	7°CDB/6°CWB (45°FDB/43°FWB)	BTU/h = kW x 3,412
			Pipe length: 7.5 m (24-9/16 ft)	7.5 m (24-9/16 ft)	cfm = m ³ /min x 35.31
			Level difference: 0 m (0 ft)	0 m (0 ft)	lbs = kg / 0.4536
			* Nominal conditions *1, *2 are subject to JIS B8615-1.		*Above specification data is subject to rounding variation.
			* Due to continuing improvement, above specification may be subject to change without notice.		
			*3 The values are measured at the rated external static pressure.		

PFFY-P-VLRM(N)-E

1. SPECIFICATIONS

Floor standing (Concealed type)

PFFY-P-VLRM(M)-E

Model		PFFY-P20VLRMM-E	PFFY-P25VLRMM-E	PFFY-P32VLRMM-E	PFFY-P40VLRMM-E	
Power source		1-phase 220-240V (50/60Hz)				
Cooling capacity (Nominal)	*1 kW	2.2	2.8	3.6	4.5	
	*1 kcal / h	1,900	2,400	3,100	3,900	
	*1 BTU / h	7,500	9,600	12,300	15,400	
	*3 Power input kW	0.04	0.04	0.04	0.05	
	*3 Current input A	0.34	0.34	0.38	0.43	
Heating capacity (Nominal)	*2 kW	2.5	3.2	4.0	5.0	
	*2 kcal / h	2,200	2,800	3,400	4,300	
	*2 BTU / h	8,500	10,900	13,600	17,100	
	*3 Power input kW	0.04	0.04	0.04	0.05	
	*3 Current input A	0.34	0.34	0.38	0.43	
External finish		Galvanized steel plate				
External dimension H x W x D		mm 639 x 886 x 220	639 x 886 x 220	639 x 1006 x 220	639 x 1006 x 220	
		in. 25-3/16 x 34-15/16 x 8-11/16	25-3/16 x 34-15/16 x 8-11/16	25-3/16 x 39-5/8 x 8-11/16	25-3/16 x 39-5/8 x 8-11/16	
Net weight		kg (lbs) 21 (47)	21 (47)	24 (53)	25 (56)	
Heat exchanger		Cross fin (Aluminium fin and copper tube)				
FAN	Type x Quantity		Sirocco fan x 1	Sirocco fan x 1	Sirocco fan x 2	Sirocco fan x 2
	External static press.	Pa	20 - <40> - <60>	20 - <40> - <60>	20 - <40> - <60>	20 - <40> - <60>
		mmH ₂ O	2.0 - <4.1> - <6.1>	2.0 - <4.1> - <6.1>	2.0 - <4.1> - <6.1>	2.0 - <4.1> - <6.1>
	Motor type		DC brushless motor			
	Motor output	kW	0.096	0.096	0.096	0.096
	Driving mechanism		Direct-driven			
	Airflow rate (Low-Mid-High)	m ³ / min	4.5 - 5.5 - 6.5	4.5 - 5.5 - 6.5	6.5 - 7.5 - 9.0	8.0 - 9.5 - 11.0
L / s		75 - 92 - 108	75 - 92 - 108	108 - 125 - 150	133 - 158 - 183	
cfm		159 - 194 - 230	159 - 194 - 230	230 - 265 - 318	283 - 335 - 388	
Sound pressure level (Low-Mid-High) (measured in anechoic room)	dB <A>	31 - 36 - 40 (20Pa)	31 - 36 - 40 (20Pa)	27 - 32 - 37 (20Pa)	30 - 36 - 40 (20Pa)	
	dB <A>	34 - 39 - 42 (40Pa)	34 - 39 - 42 (40Pa)	30 - 35 - 41 (40Pa)	32 - 38 - 42 (40Pa)	
	*3 dB <A>	35 - 40 - 43 (60Pa)	35 - 40 - 43 (60Pa)	32 - 37 - 42 (60Pa)	35 - 39 - 44 (60Pa)	
Insulation material		Polyethylene foam, Urethane foam				
Air filter		PP honeycomb fabric (washable)				
Protection device		Fuse				
Refrigerant control device		LEV				
Connectable outdoor unit		R410A CITY MULTI				
Diameter of refrigerant pipe	Liquid (R410A)	mm (in.) ø6.35 (ø1/4) Brazed	ø6.35 (ø1/4) Brazed	ø6.35 (ø1/4) Brazed	ø6.35 (ø1/4) Brazed	
	Gas (R410A)	mm (in.) ø12.7 (ø1/2) Brazed	ø12.7 (ø1/2) Brazed	ø12.7 (ø1/2) Brazed	ø12.7 (ø1/2) Brazed	
Field drain pipe size		mm (in.) I.D. 26mm (1)<Accessory hose O.D.27mm(top end:O.D.20mm)>				
Drawing	External	IU-KB94-L081	IU-KB94-L081	IU-KB94-L081	IU-KB94-L081	
	Wiring	IU-KB94-G985	IU-KB94-G985	IU-KB94-G985	IU-KB94-G985	
	Refrigerant cycle	-	-	-	-	
Standard attachment	Document	Installation Manual, Instruction Book				
	Accessory	Screw plate, Level adjusting screw, Strainer, Drain hose (flexible joint), Hose band				
Remark	Optional parts	-				
	Installation	Details on foundation work, duct work, insulation work, electrical wiring, power source switch, and other items shall be referred to the Installation Manual.				
Note :		*1 Nominal cooling conditions Indoor : 27°CDB/19°CWB (81°FDB/66°FWB) Outdoor : 35°CDB (95°FDB) Pipe length : 7.5 m (24-9/16 ft) Level difference : 0 m (0 ft)	*2 Nominal heating conditions 20°CDB (68°FDB) 7°CDB/6°CWB (45°FDB/43°FWB) 7.5 m (24-9/16 ft) 0 m (0 ft)	Unit converter kcal/h = kW x 860 BTU/h = kW x 3,412 cfm = m ³ /min x 35.31 lbs = kg / 0.4536		
		* Nominal conditions *1, *2 are subject to JIS B8615-1. * Due to continuing improvement, above specification may be subject to change without notice. *3 The values are measured at the rated external static pressure.		*Above specification data is subject to rounding variation.		

1. SPECIFICATIONS

Floor standing (Concealed type)

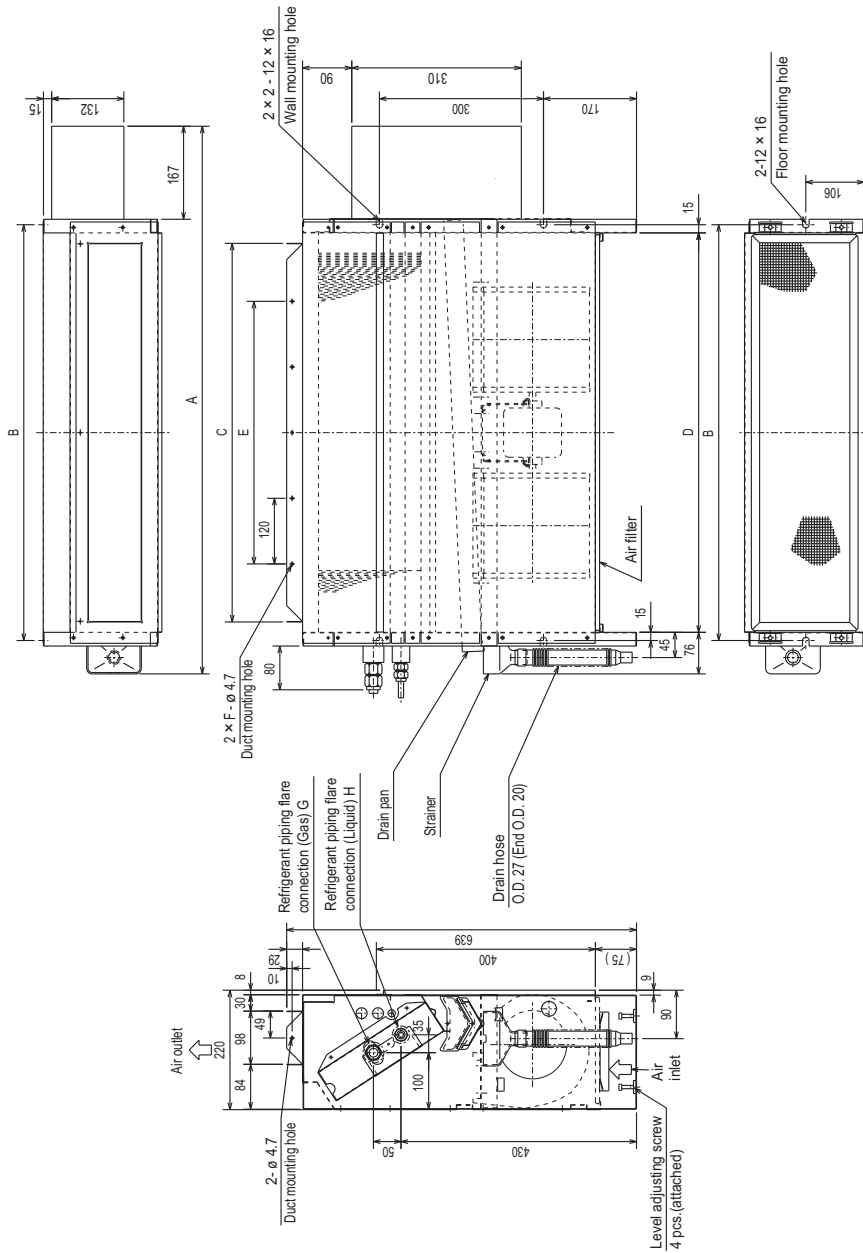
Model			PFFY-P50VLRMM-E	PFFY-P63VLRMM-E		
Power source			1-phase 220-240V (50/60Hz)			
Cooling capacity (Nominal)	*1	kW	5.6	7.1		
		kcal / h	4,800	6,100		
		BTU / h	19,100	24,200		
	*3	Power input	kW	0.05	0.07	
	*3	Current input	A	0.48	0.59	
Heating capacity (Nominal)	*2	kW	6.3	8.0		
		kcal / h	5,400	6,900		
		BTU / h	21,500	27,300		
	*3	Power input	kW	0.05	0.07	
	*3	Current input	A	0.48	0.59	
External finish			Galvanized steel plate			
External dimension H x W x D		mm	639 x 1246 x 220	639 x 1246 x 220		
		in.	25-3/16 x 49-1/16 x 8-11/16	25-3/16 x 49-1/16 x 8-11/16		
Net weight		kg (lbs)	29 (64)	29 (64)		
Heat exchanger			Cross fin (Aluminium fin and copper tube)			
FAN	Type x Quantity		Sirocco fan x 2		Sirocco fan x 2	
	External static press.	Pa	20 - <40> - <60>	20 - <40> - <60>		
		mmH ₂ O	2.0 - <4.1> - <6.1>	2.0 - <4.1> - <6.1>		
	Motor type		DC blushless motor			
	Motor output	kW	0.096	0.096		
	Driving mechanism		Direct-driven			
	Airflow rate (Low-Mid-High)	m ³ / min	10.0 - 12.0 - 14.0	11.0 - 13.0 - 15.5		
L / s		167 - 200 - 233	183 - 217 - 258			
cfm		353 - 424 - 494	388 - 459 - 547			
Sound pressure level (Low-Mid-High) (measured in anechoic room)	*3	dB <A>	32 - 37 - 41 (20Pa)	35 - 40 - 44 (20Pa)		
		dB <A>	35 - 40 - 44 (40Pa)	36 - 42 - 47 (40Pa)		
	dB <A>	36 - 41 - 45 (60Pa)	38 - 43 - 48 (60Pa)			
Insulation material			Polyethylene foam, Urethane foam			
Air filter			PP honeycomb fabric (washable)			
Protection device			Fuse			
Refrigerant control device			LEV			
Connectable outdoor unit			R410A CITY MULTI			
Diameter of refrigerant pipe	Liquid (R410A)	mm (in.)	ø6.35 (ø1/4) Brazed	ø9.52 (ø3/8) Brazed		
	Gas (R410A)	mm (in.)	ø12.7 (ø1/2) Brazed	ø15.88 (ø5/8) Brazed		
Field drain pipe size		mm (in.)	I.D. 26mm (1)<Accessory hose O.D.27mm(top end:O.D.20mm)>			
Drawing	External		IU-KB94-L081	IU-KB94-L081		
	Wiring		IU-KB94-G985	IU-KB94-G985		
	Refrigerant cycle		-	-		
Standard attachment	Document		Installation Manual, Instruction Book			
	Accessory		Screw plate, Level adjusting screw, Strainer, Drain hose (flexible joint), Hose band			
Remark	Optional parts		-			
	Installation		Details on foundation work, duct work, insulation work, electrical wiring, power source switch, and other items shall be referred to the Installation Manual.			
Note :			*1 Nominal cooling conditions Indoor : 27°CDB/19°CWB (81°FDB/66°FWB) Outdoor : 35°CDB (95°FDB) Pipe length : 7.5 m (24-9/16 ft) Level difference : 0 m (0 ft)		*2 Nominal heating conditions 20°CDB (68°FDB) 7°CDB/6°CWB (45°FDB/43°FWB) 7.5 m (24-9/16 ft) 0 m (0 ft)	
					Unit converter kcal/h = kW x 860 BTU/h = kW x 3,412 cfm = m ³ /min x 35.31 lbs = kg / 0.4536	
			* Nominal conditions *1, *2 are subject to JIS B8615-1. * Due to continuing improvement, above specification may be subject to change without notice. *3 The values are measured at the rated external static pressure.		*Above specification data is subject to rounding variation.	

PFFY-P-VLRMM(N)-E

PFFY-P-VLRM(M)-E

Unit : mm

PFFY-P20, 25, 32, 40, 50, 63VLRM-E



Dimensions

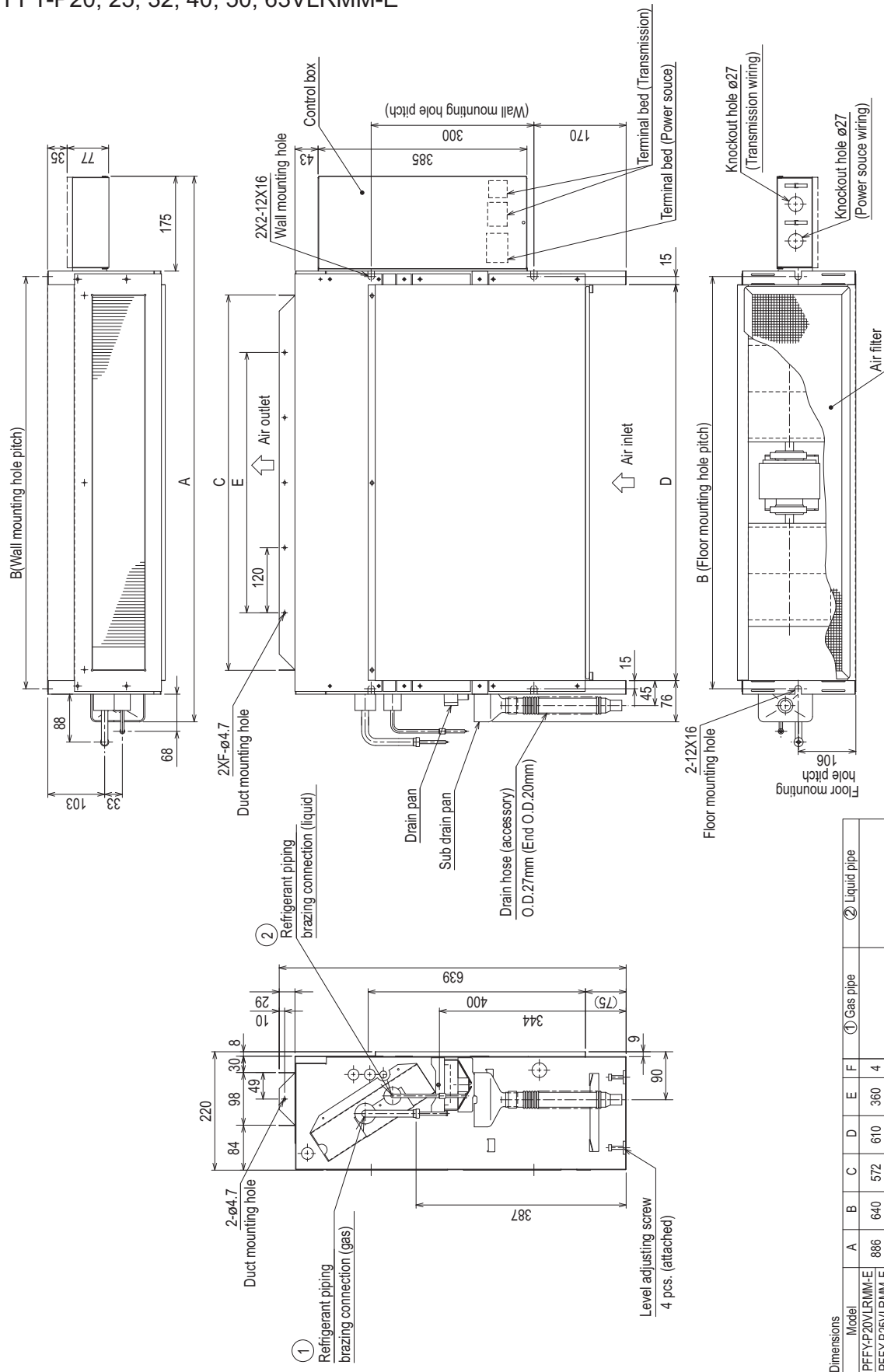
Model	A	B	C	D	E	F	G (Gas)	H (Liquid)
PFFY-P20VLRM-E	886	640	572	610	360	4	φ12.7	φ6.35
PFFY-P25VLRM-E	886	640	572	610	360	4	φ12.7	φ6.35
PFFY-P32VLRM-E	1006	760	692	730	480	5	φ12.7	φ6.35
PFFY-P40VLRM-E	1006	760	692	730	480	5	φ12.7	φ6.35
PFFY-P50VLRM-E	1246	1000	932	970	720	7	φ12.7	φ6.35
PFFY-P63VLRM-E	1246	1000	932	970	720	7	φ15.88	φ9.52

2. EXTERNAL DIMENSIONS

Floor standing (Concealed type)

PFFY-P20, 25, 32, 40, 50, 63VLRMM-E

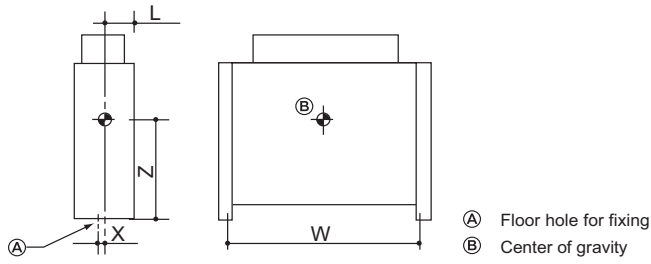
Unit : mm



Dimensions	Model						
	A	B	C	D	E	F	② Liquid pipe
PFFY-P20VLRMM-E	886	640	572	610	360	4	ø6.35
PFFY-P25VLRMM-E	1006	760	692	730	480	5	
PFFY-P32VLRMM-E	1246	1000	932	970	720	7	ø9.52
PFFY-P40VLRMM-E							
PFFY-P50VLRMM-E							ø15.88
PFFY-P63VLRMM-E							

PFFY-P-VLRM(N)-E

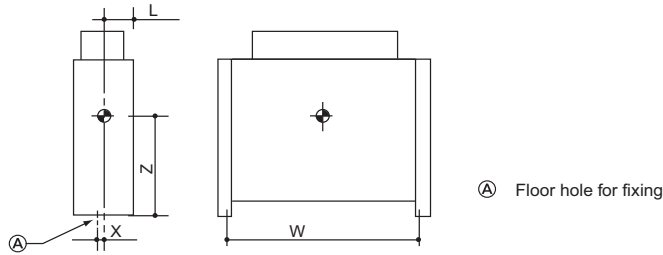
PFFY-P20, 25, 32, 40, 50, 63VLRM-E



(mm)[in]

Model name	W	L	X	Z
PFFY-P20VLRM-E	640 [25-1/4]	100 [3-15/16]	17 [11/16]	335 [13-1/4]
PFFY-P25VLRM-E	640 [25-1/4]	100 [3-15/16]	17 [11/16]	335 [13-1/4]
PFFY-P32VLRM-E	760 [29-15/16]	100 [3-15/16]	17 [11/16]	335 [13-1/4]
PFFY-P40VLRM-E	760 [29-15/16]	100 [3-15/16]	17 [11/16]	335 [13-1/4]
PFFY-P50VLRM-E	1000 [39-3/8]	100 [3-15/16]	17 [11/16]	335 [13-1/4]
PFFY-P63VLRM-E	1000 [39-3/8]	100 [3-15/16]	17 [11/16]	335 [13-1/4]

PFFY-P20, 25, 32, 40, 50, 63VLRMM-E

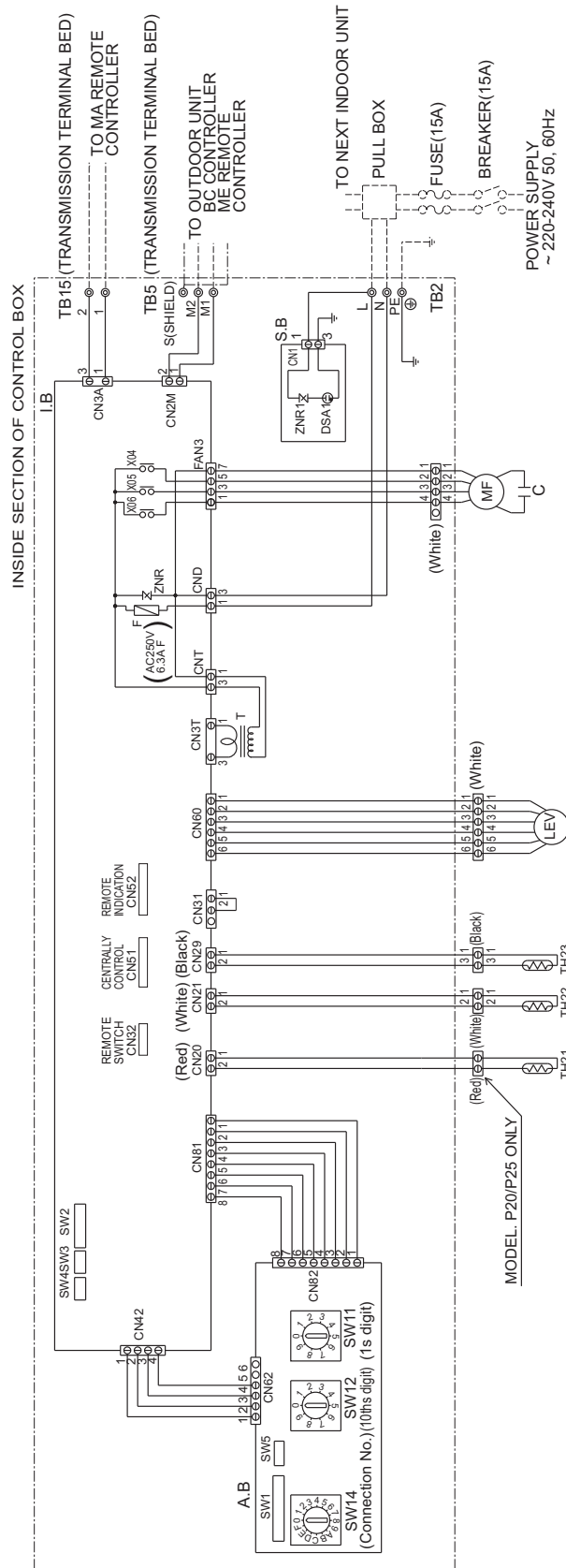


(mm)[in]

Model name	W	L	X	Z
PFFY-P20VLRMM-E	640 [25-1/4]	100 [3-15/16]	17 [11/16]	335 [13-1/4]
PFFY-P25VLRMM-E	640 [25-1/4]	100 [3-15/16]	17 [11/16]	335 [13-1/4]
PFFY-P32VLRMM-E	760 [29-15/16]	100 [3-15/16]	17 [11/16]	335 [13-1/4]
PFFY-P40VLRMM-E	760 [29-15/16]	100 [3-15/16]	17 [11/16]	335 [13-1/4]
PFFY-P50VLRMM-E	1000 [39-3/8]	100 [3-15/16]	17 [11/16]	335 [13-1/4]
PFFY-P63VLRMM-E	1000 [39-3/8]	100 [3-15/16]	17 [11/16]	335 [13-1/4]

PFFY-P-VLRM(M)-E

PFFY-P20, 25, 32, 40, 50, 63VLRM-E

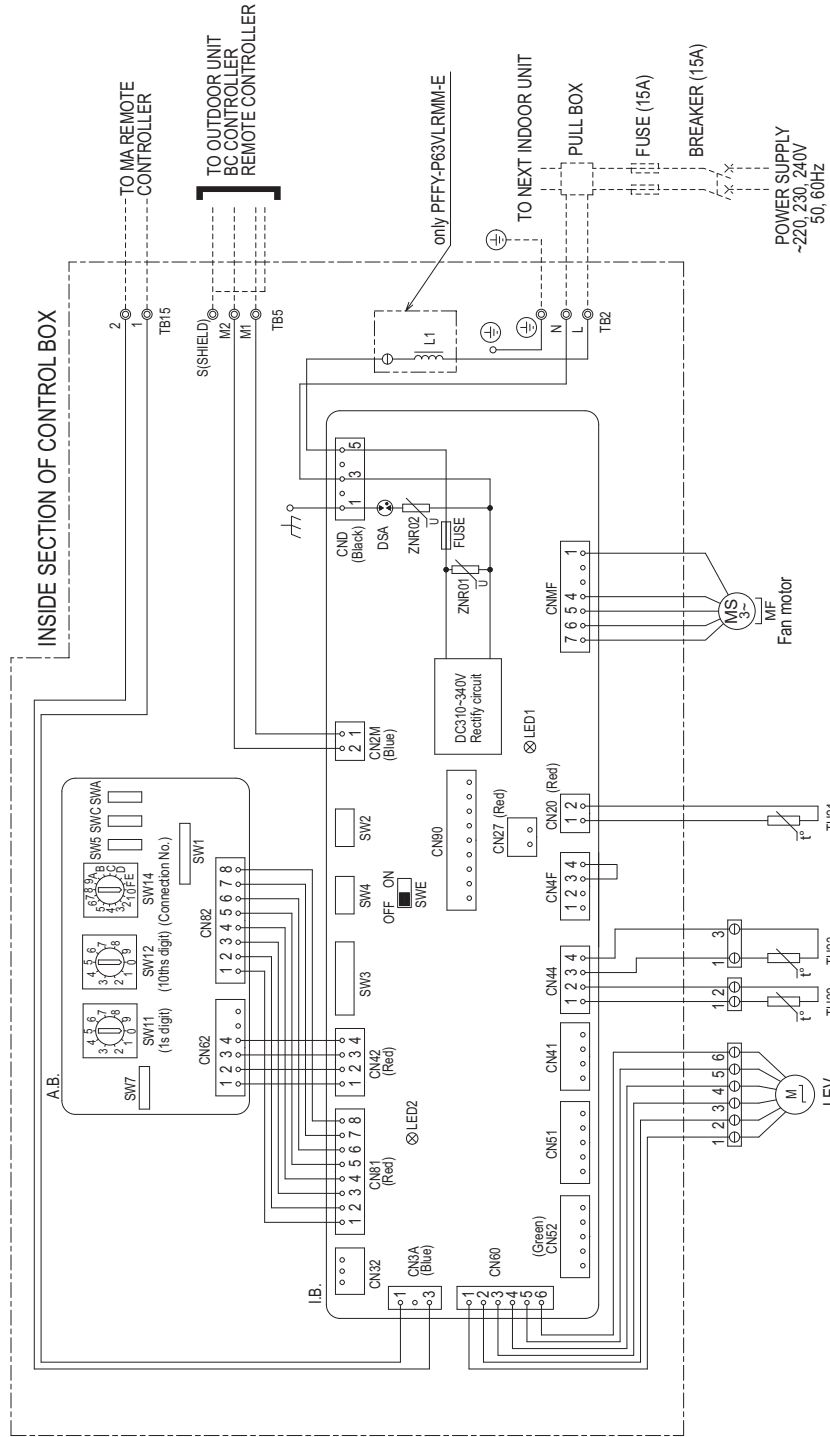


SYMBOL EXPLANATION

SYMBOL	NAME	SYMBOL	NAME
MF	Fan motor	TH22	Thermistor (piping temp.detection/liquid)
C	Capacitor (for MF)	TH23	Thermistor (piping temp.detection/gas)
I.B	Indoor controller board	SW11 (A.B)	Switch (1s digit address set)
A.B	Address board	SW12 (A.B)	Switch (10ths digit address set)
TB2	Power source terminal bed	SW14 (A.B)	Switch (connection No.set)
TB15	Transmission terminal bed	SW1 (A.B)	Switch (for mode selection)
F	Fuse AC250V 6.3A F	SW2 (I.B)	Switch (for capacity code)
T	Transformer	SW3 (I.B)	Switch (for mode selection)
LEV	Electronic linear expan. valve	SW4 (I.B)	Switch (for model selection)
S.B	Surge absorber board	SW5 (A.B)	Switch (for voltage selection)
TH21	Thermistor (inlet temp.detection)	X04-06	Aux. relay

PFFY-P-VLRM(M)-E

PFFY-P20, 25, 32, 40, 50, 63VLRMM-E



NOTE: 1. The wirings to TB2, TB5, TB15 shown in dotted line are field work.
 2. Mark ⊙ indicates terminal bed, ⊖ connector.

OPERATION OF LED FOR INDOOR CIRCUIT BOARD SERVICE

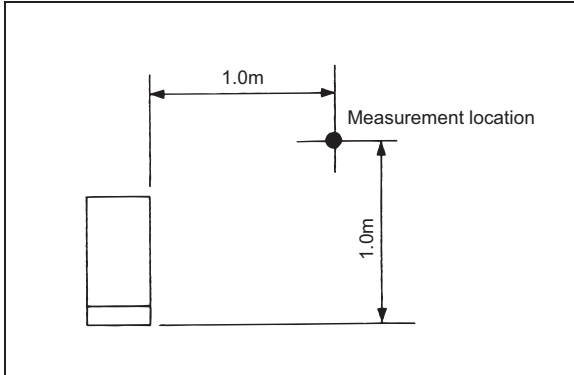
SYMBOL	LED operation under normal state
LED1	At applying main power source → Lighting
LED2	At receiving MA transmission power source → Lighting

SYMBOL EXPLANATION

SYMBOL	NAME	SYMBOL	NAME
I.B.	Indoor controller board	A.B.	Address board
FUSE	Fuse <AC250V 6.3A>	SW1	Switch (for mode selection)
ZNR01.02	Varistor	SW5	Switch (for mode selection)
DSA	Arrester	SW7	Switch (for model selection)
DS2	Connector (Dampner)	SW11	Switch (1s digit address set)
CN32	Connector (Remote switch)	SW12	Switch (10ths digit address set)
CN41	Connector (HA terminal-A)	SW14	Switch (connection No.set)
CN51	Connector (Centrally control)	SWA	Switch (for static pressure selection)
CN62	Connector (Remote indication)	SWC	Switch (for static pressure selection)
CN90	Connector (Wireless)	TB2	Power source terminal bed
SW2	Switch (for capacity code)	TB5	Transmission terminal bed
SW3	Switch (for mode selection)	TB15	Transmission terminal bed
SW4	Switch (for model selection)	TH21	Thermistor (inlet air temp.detection)
SWE	Connector (emergency operation)	TH22	Thermistor (piping temp.detection/liquid)
L1	AC reactor(Power factor improvement)	TH23	Thermistor (piping temp.detection/gas)
		LEV	Electronic linear expan.valve

5-1. Sound levels

PFFY-P-VLRM-E

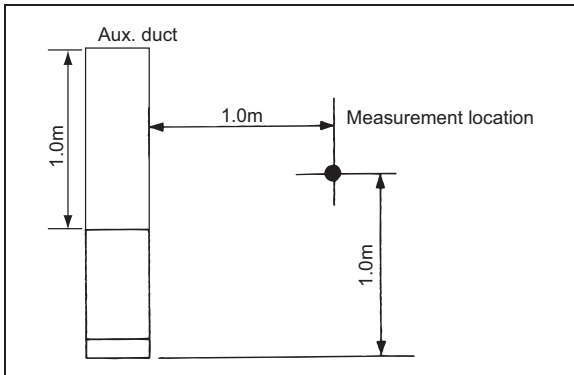


* Measured in anechoic room

Sound level at anechoic room: Low-High

	Sound level dB (A)
PFFY-P20VLRM-E	34-40
PFFY-P25VLRM-E	
PFFY-P32VLRM-E	35-40
PFFY-P40VLRM-E	38-43
PFFY-P50VLRM-E	
PFFY-P63VLRM-E	40-46

PFFY-P-VLRMM-E



* Measured in anechoic room

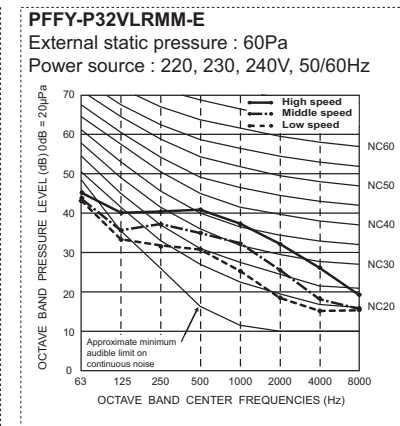
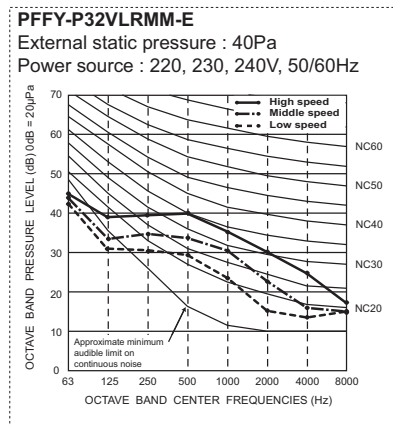
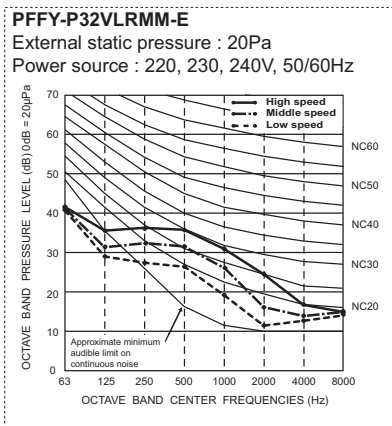
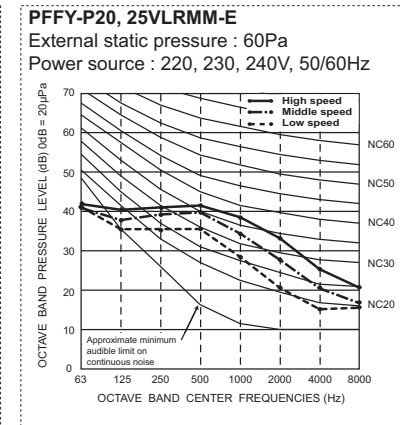
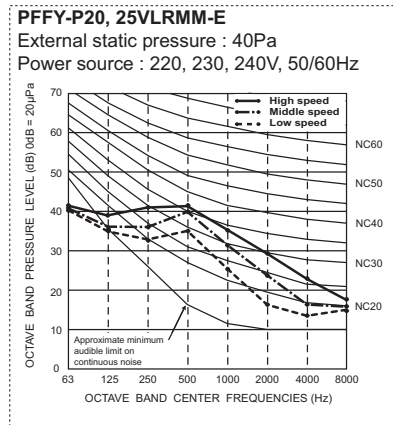
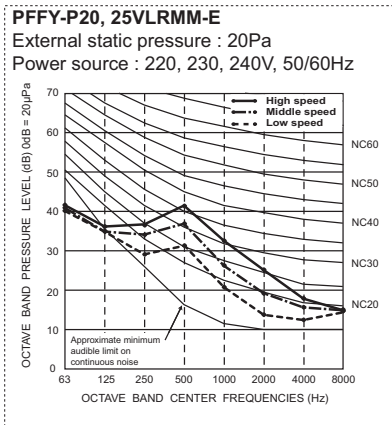
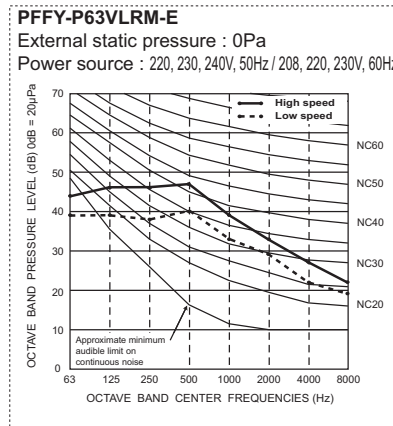
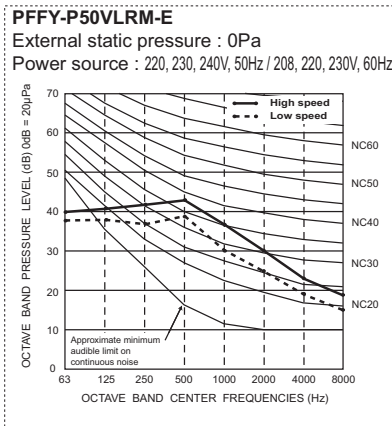
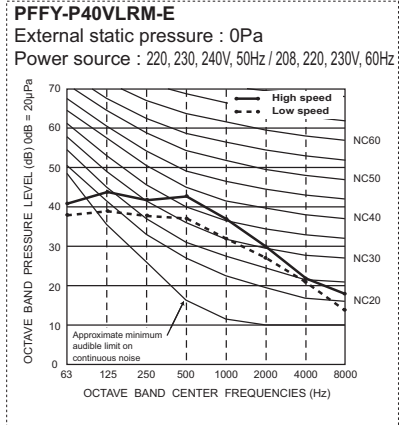
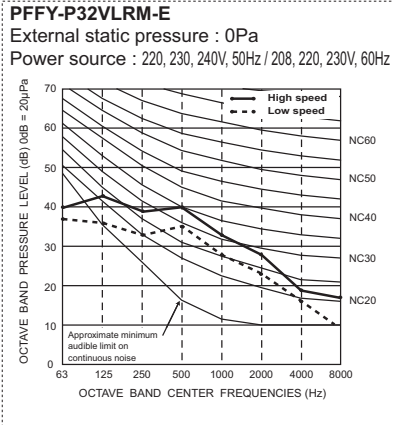
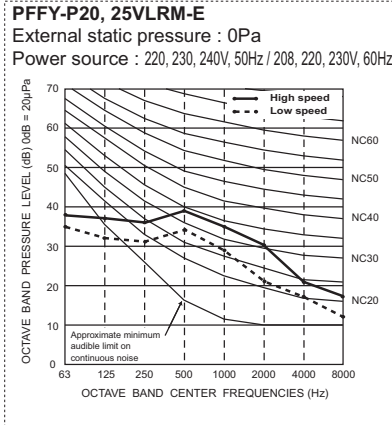
Sound level at anechoic room: Low-Middle-High

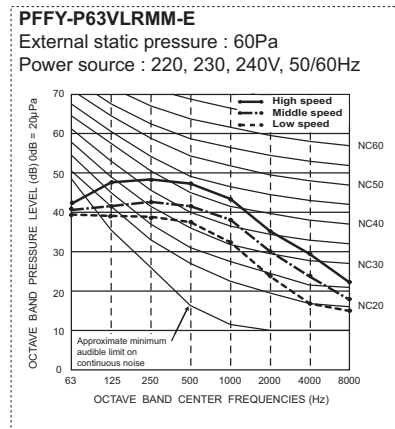
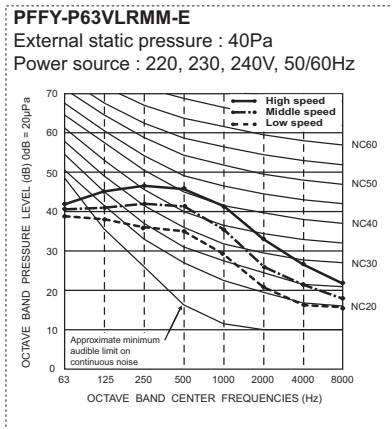
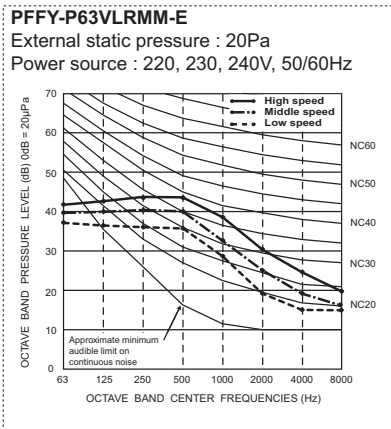
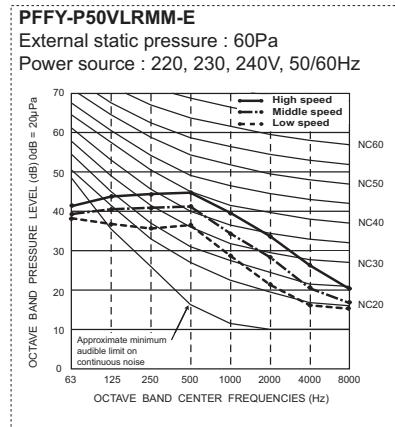
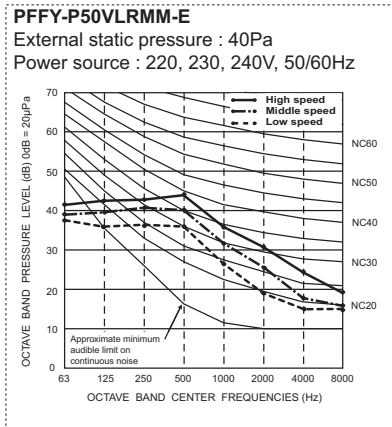
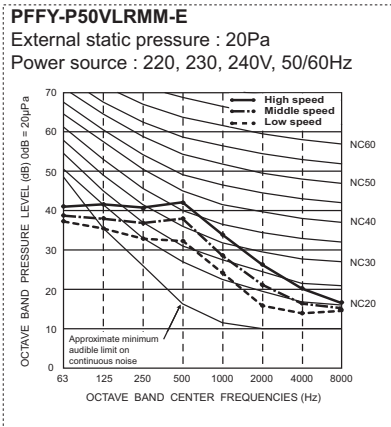
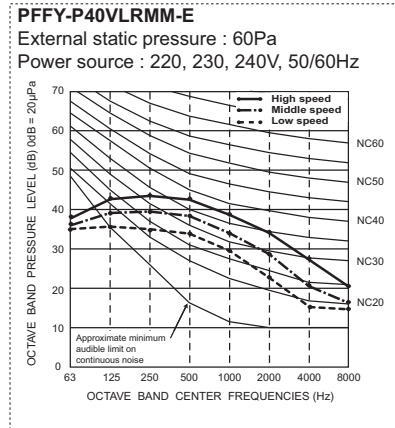
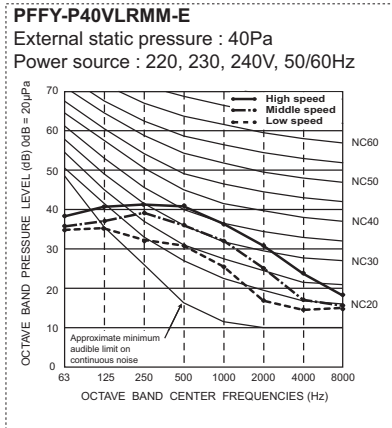
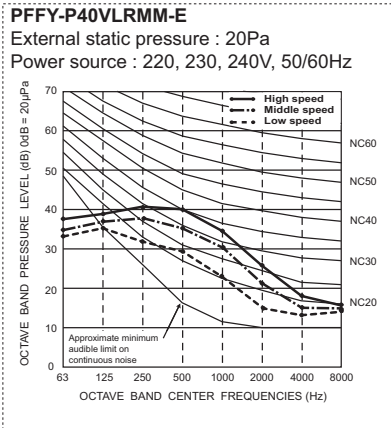
	Sound level dB (A)		
	20Pa	40Pa	60Pa
PFFY-P20VLRMM-E	31-36-40	34-39-42	35-40-43
PFFY-P25VLRMM-E	31-36-40	34-39-42	35-40-43
PFFY-P32VLRMM-E	27-32-37	30-35-41	32-37-42
PFFY-P40VLRMM-E	30-36-40	32-38-42	35-39-44
PFFY-P50VLRMM-E	32-37-41	35-40-44	36-41-45
PFFY-P63VLRMM-E	35-40-44	36-42-47	38-43-48

PFFY-P-VLRM(M)-E

5-2. NC curves

PFFY-P-VLRM(M)-E





PFFY-P-VLRMM(E)

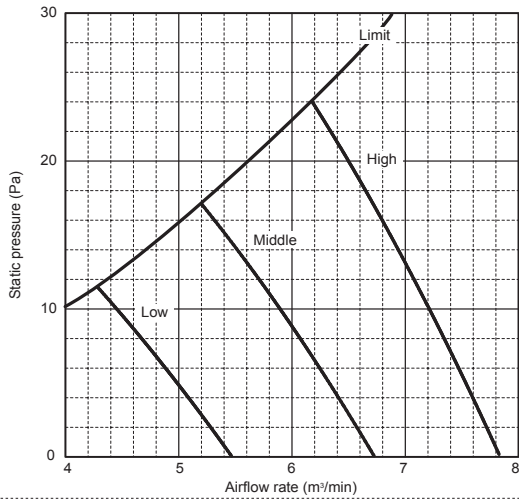
6. FAN CHARACTERISTICS CURVES

Floor standing (Concealed type)

PFFY-P-VLRM(M)-E

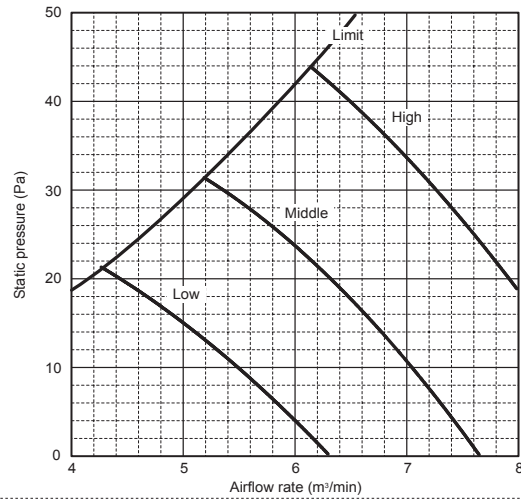
PFFY-P20, 25VLRMM-E

External static pressure : 20Pa
Power source : 220,230,240V, 50/60Hz



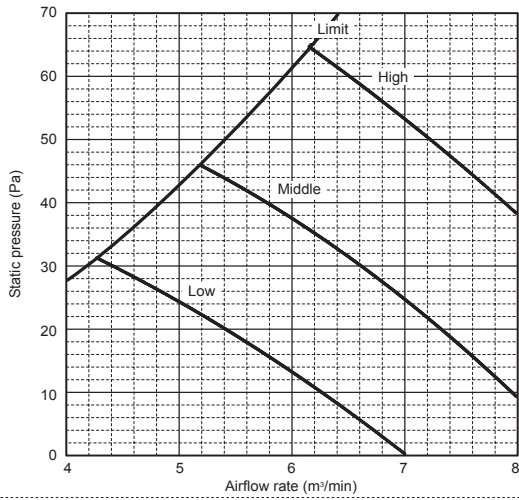
PFFY-P20, 25VLRMM-E

External static pressure : 40Pa
Power source : 220,230,240V, 50/60Hz



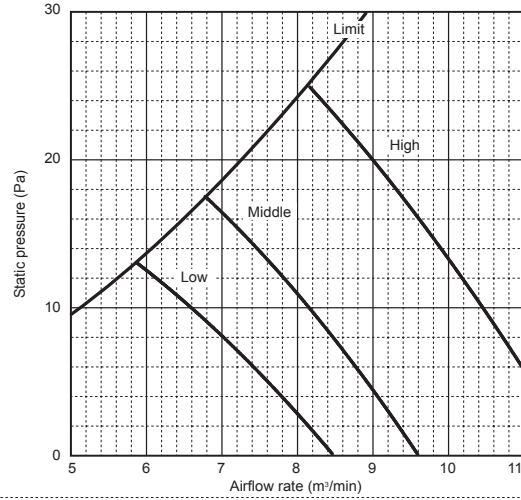
PFFY-P20, 25VLRMM-E

External static pressure : 60Pa
Power source : 220,230,240V, 50/60Hz



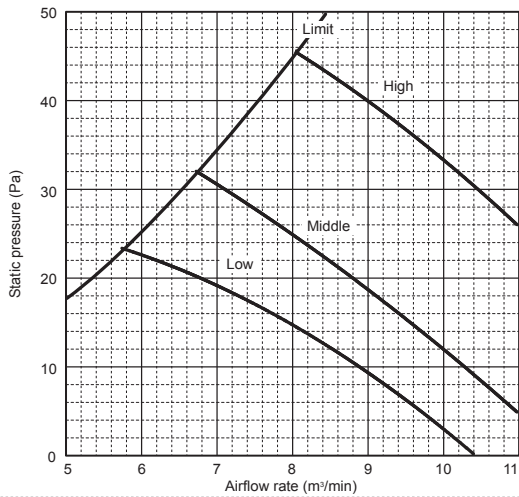
PFFY-P32VLRMM-E

External static pressure : 20Pa
Power source : 220,230,240V, 50/60Hz



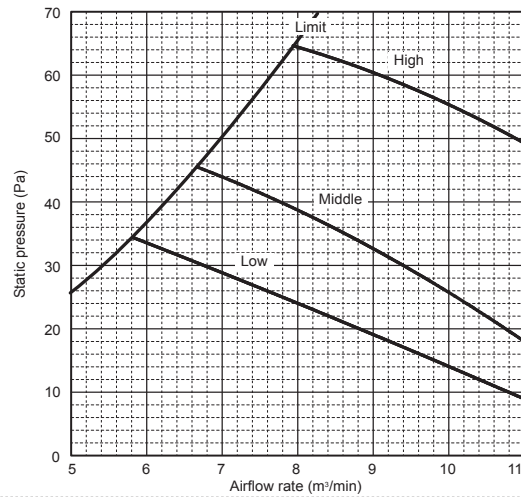
PFFY-P32VLRMM-E

External static pressure : 40Pa
Power source : 220,230,240V, 50/60Hz



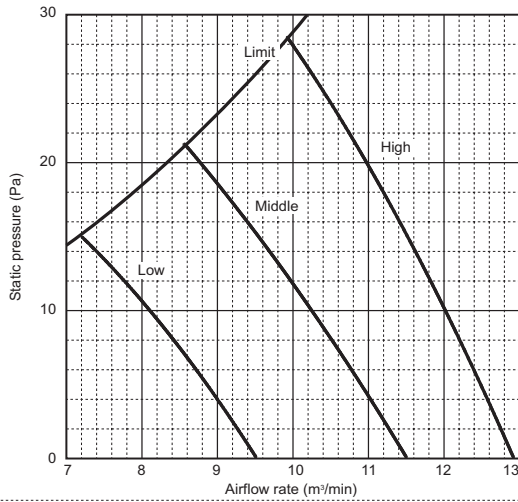
PFFY-P32VLRMM-E

External static pressure : 60Pa
Power source : 220,230,240V, 50/60Hz



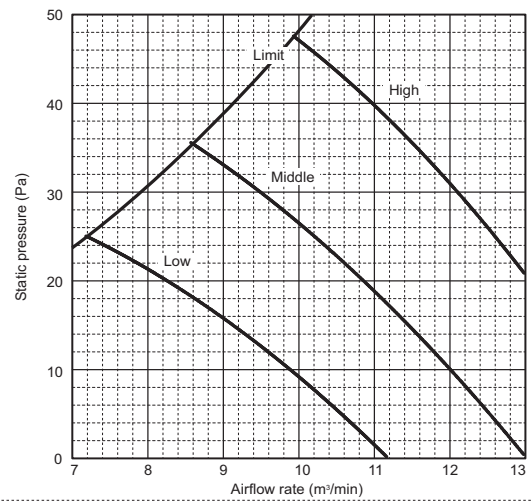
PFFY-P40VLRMM-E

External static pressure : 20Pa
Power source : 220,230,240V, 50/60Hz



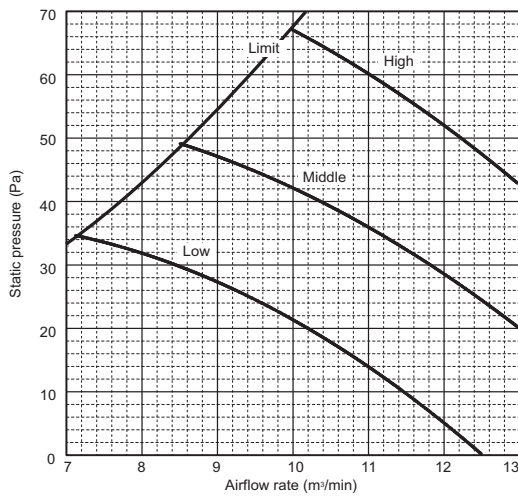
PFFY-P40VLRMM-E

External static pressure : 40Pa
Power source : 220,230,240V, 50/60Hz



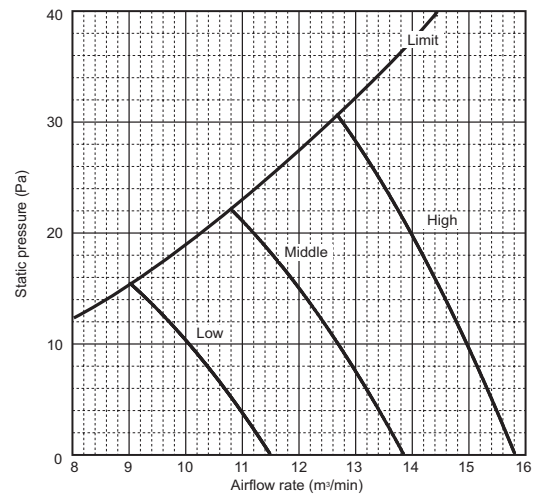
PFFY-P40VLRMM-E

External static pressure : 60Pa
Power source : 220,230,240V, 50/60Hz



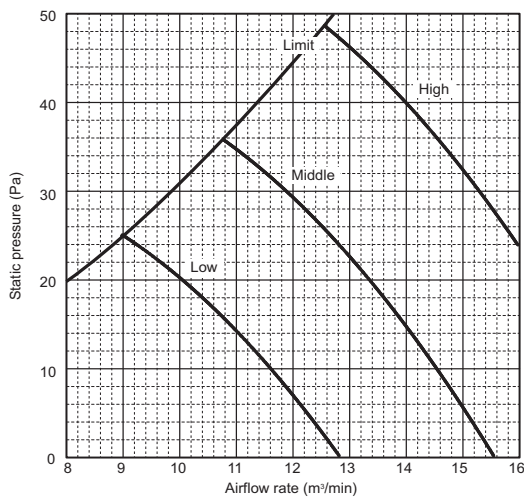
PFFY-P50VLRMM-E

External static pressure : 20Pa
Power source : 220,230,240V, 50/60Hz



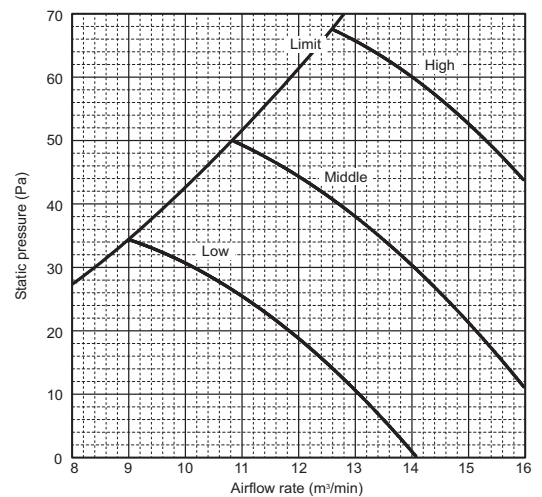
PFFY-P50VLRMM-E

External static pressure : 40Pa
Power source : 220,230,240V, 50/60Hz



PFFY-P50VLRMM-E

External static pressure : 60Pa
Power source : 220,230,240V, 50/60Hz



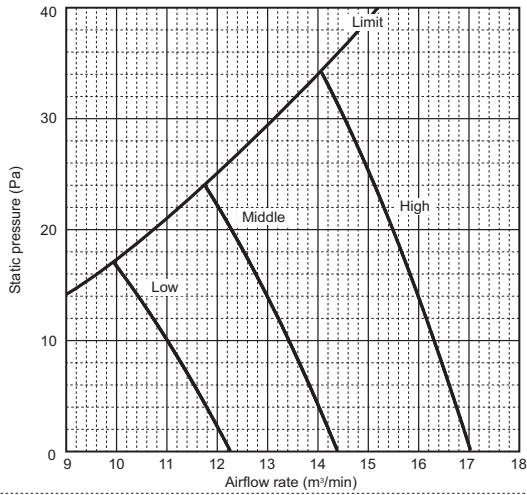
6. FAN CHARACTERISTICS CURVES

Floor standing (Concealed type)

PFFY-P-VLRM(M)-E

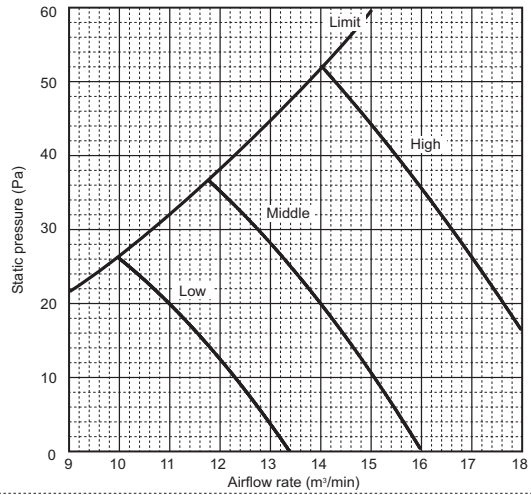
PFFY-P63VLRMM-E

External static pressure : 20Pa
Power source : 220,230,240V, 50/60Hz



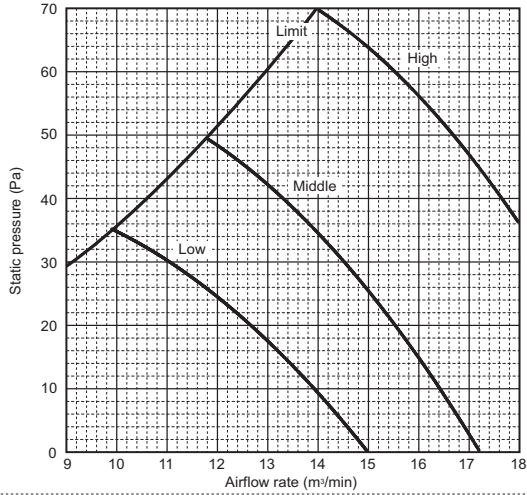
PFFY-P63VLRMM-E

External static pressure : 40Pa
Power source : 220,230,240V, 50/60Hz



PFFY-P63VLRMM-E

External static pressure : 60Pa
Power source : 220,230,240V, 50/60Hz



7. ELECTRICAL CHARACTERISTICS

Floor standing (Concealed type)

Symbols: MCA (Max.Circuit Amps =1.25xFLA), FLA (Full Load Amps)
IFM (Indoor Fan Motor), Output (Fan motor rated output)

PFFY-P-VLRM-E	Power supply			IFM	
	Volts/Hz	Range +-10%	MCA(A) (50/60Hz)	Output (kW)	FLA(A) (50/60Hz)
PFFY-P20VLRM-E	220-240V/50Hz 208-230V/60Hz	Max.: 264V Min.: 187V	0.24/0.31	0.015	0.19/0.25
PFFY-P25VLRM-E			0.24/0.31	0.015	0.19/0.25
PFFY-P32VLRM-E			0.36/0.38	0.018	0.29/0.30
PFFY-P40VLRM-E			0.40/0.41	0.030	0.32/0.33
PFFY-P50VLRM-E			0.50/0.51	0.035	0.40/0.41
PFFY-P63VLRM-E			0.58/0.59	0.050	0.46/0.47

PFFY-P-VLRMM-E	Power supply			IFM	
	Volts/Hz	Range +-10%	MCA(A) (50/60Hz)	Output (kW)	FLA(A) (50/60Hz)
PFFY-P20VLRMM-E	220-240V/50Hz 220-240V/60Hz	Max.: 264V Min.: 198V	0.59/0.58	0.096	0.47/0.46
PFFY-P25VLRMM-E			0.59/0.58	0.096	0.47/0.46
PFFY-P32VLRMM-E			0.69/0.69	0.096	0.55/0.55
PFFY-P40VLRMM-E			0.78/0.76	0.096	0.62/0.61
PFFY-P50VLRMM-E			0.80/0.79	0.096	0.64/0.63
PFFY-P63VLRMM-E			0.93/0.93	0.096	0.74/0.74

PFFY-P-VLRM(M)-E