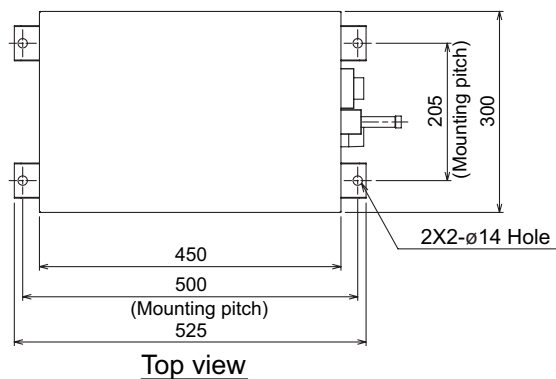


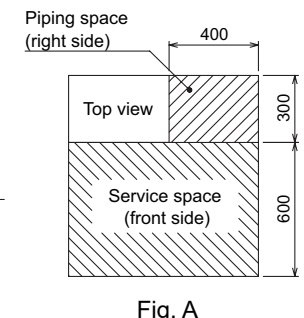
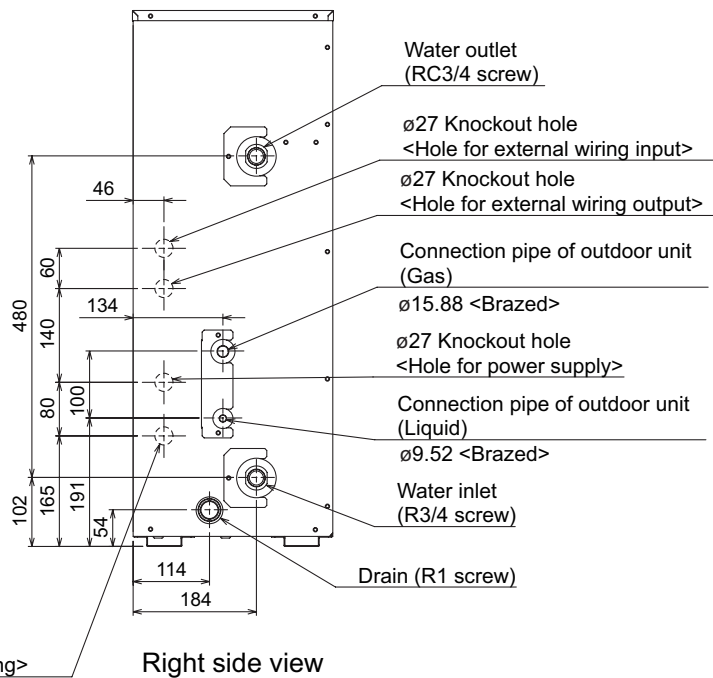
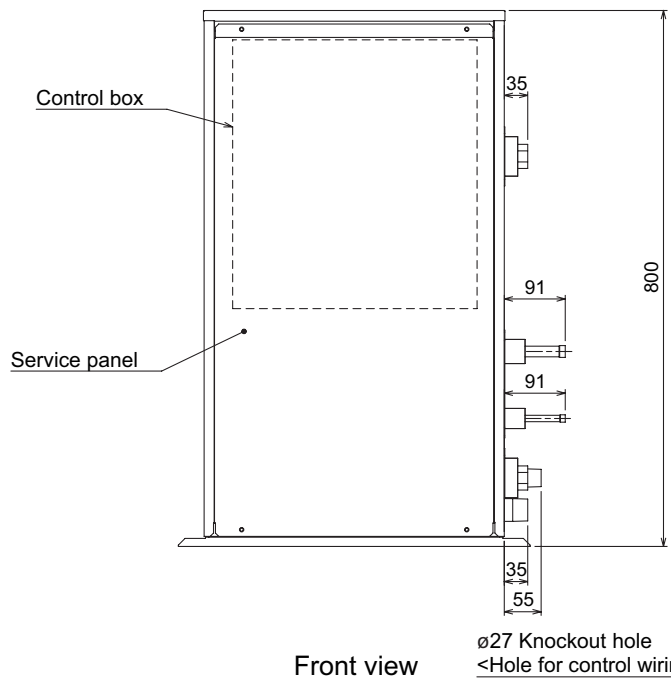
**2. External Dimensions**  
**(1) PWFY-P100VM-E-BU**



<Accessories>

- Y-type strainer (RC3/4) ..... 1pc.
- Heat Insulation material ..... 1pc.
- Wire ..... 1pc.

- Note 1.Ensure no water or debris can enter the unit through any gaps around wiring or piping.  
 2.Ensure adequate both service and piping space as shown in to Fig A.  
 3.Please always make water circulate or add the brine to the circulation water when the ambient temperature becomes 0°C or below.  
 4.The unit is not designed for outside installations.  
 5.Please always make water circulate or remove all circulation water completely when not in operation.  
 6.The water circuit must be the closed circuit.  
 7.Please don't use the steel material for the water piping.  
 8.Connect the strainer as accessory for unit to water inlet pipe.



<Unit:mm>